

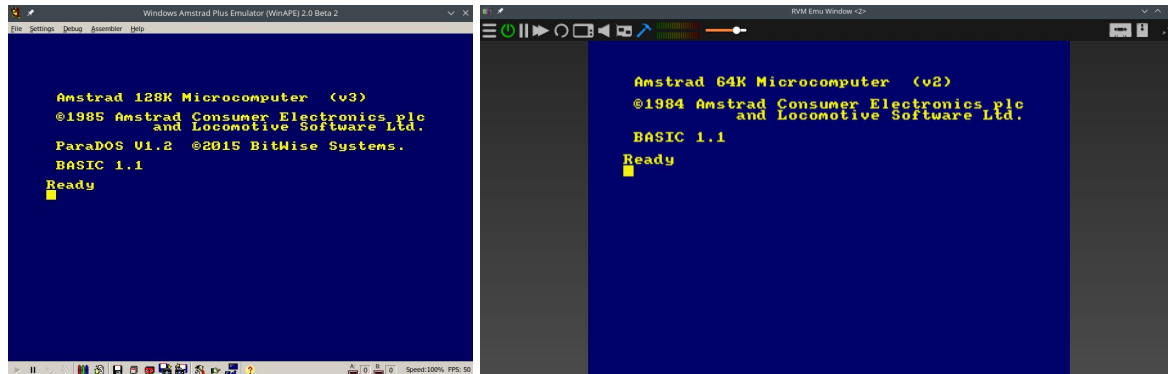
PENGUIN

CROSS

BUILD OPTIONS

HOW TO PLAY PENGUIN CROSS?

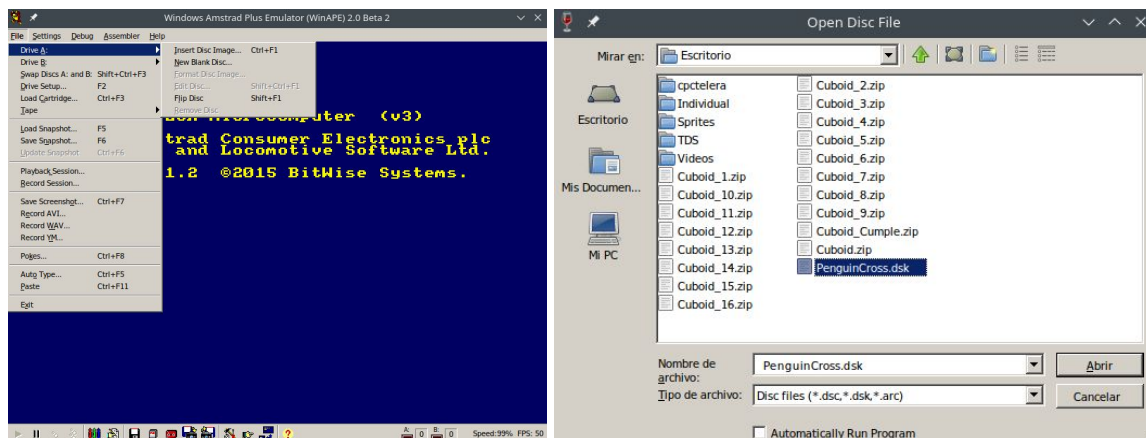
There are different ways to run Penguin Cross using WinAPE and Retro Virtual Machine.



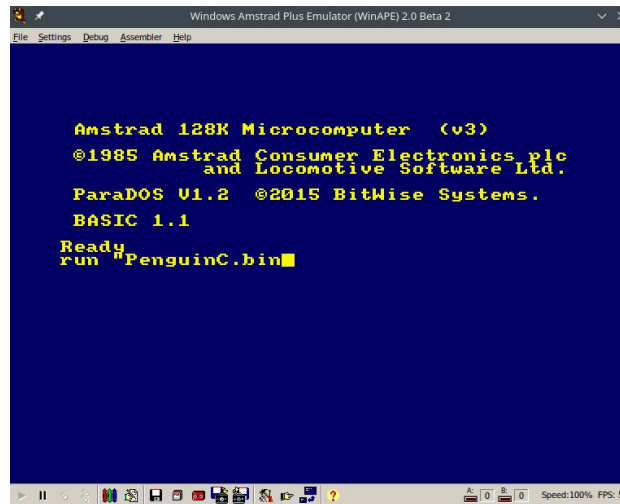
- Loading DSK file:

Using WinAPE we must select the option:

File > Drive A > Insert Disk Image



Later, we must choose the file **PenguinCross.dsk** and write *run "PenguinC.bin"*



We can also run the game by terminal executing the command **\$ cpct_winape PenguinCross.dsk** in the folder where DSK file is located and it automatically write **run"penguinc.bin** and load the game.

In case of using RVM, we must write in the terminal in the folder where the DSK file is located:

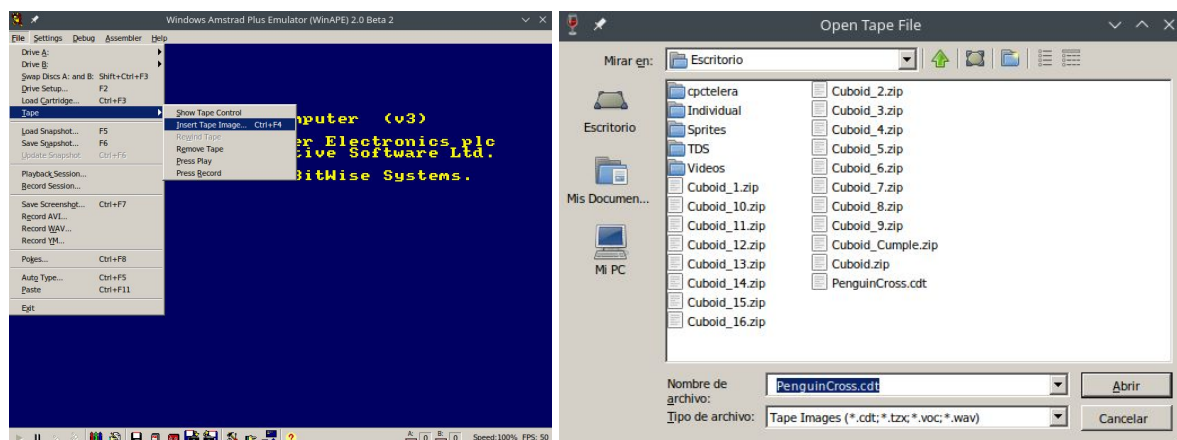
\$ cpct_rvm PenguinCross.dsk

and it will type automatically **run"PenguinC"** and load the game.

- Loading CDT file:

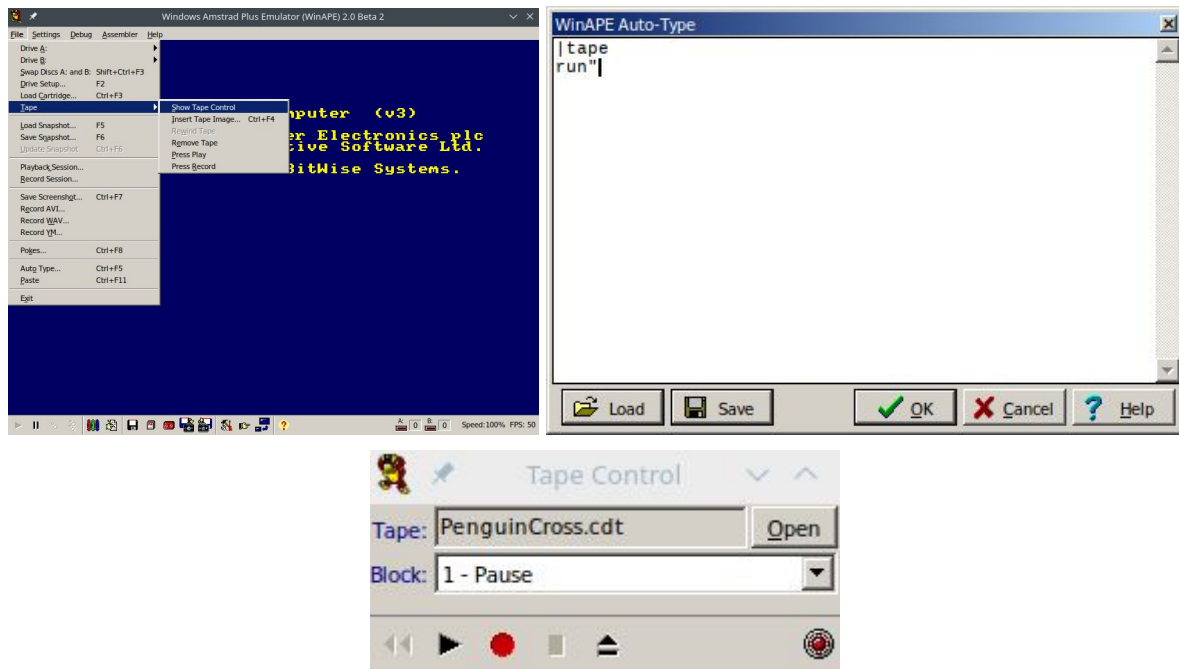
Using WinAPE we must select the option:

File > Tape > Insert Tape Image and choose the file **PenguinCross.cdt**

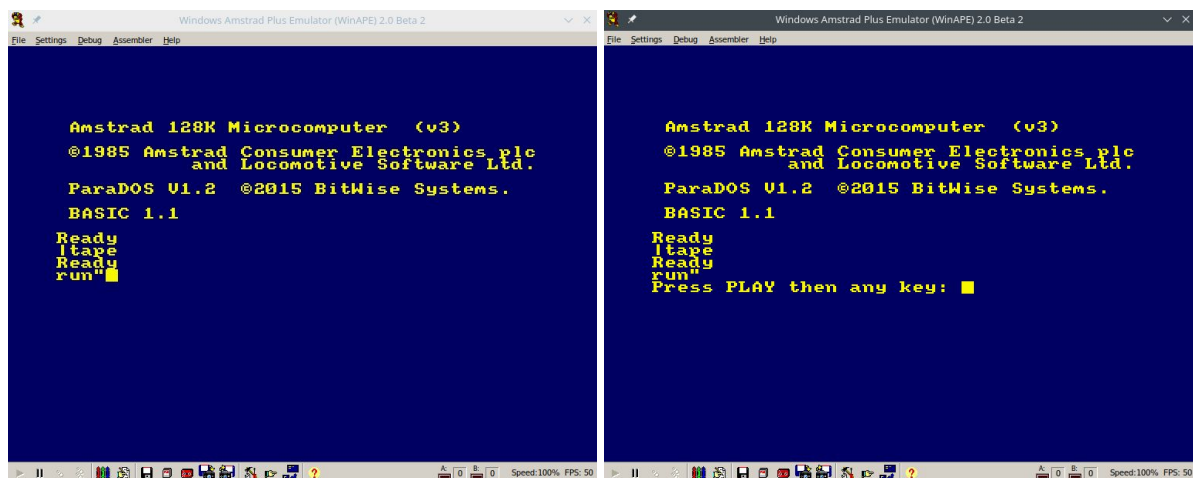


Then, we go to the option **File > Tape > Show Tape Control**. With this window opened we go to the option **File > Auto-Type** or press **Control + F5** to open the WinAPE Auto-Type window. Inside the text box we will write:

**/tape
run"**



Press OK and then the Play button at the bottom left of the Tape Control. Now we must press enter within the WinAPE window, then we will be asked to press any key and the game will start to load.



In case of using RVM, we must write in the terminal in the folder where the CDT file is located:

```
$ cpct_rvm PenguinCross.cdt
```

and it will automatically load the game.

- Compiling the source code

In order to compile we must install [CPCTelera](#) and follow the steps indicated in the following video:

[CPCtelera 1.5 development branch installation](#) 

For compiling our game we have used the version:

commit 192995f4c8619c6bfde3e9b566e504555a4136be

Once we have CPCtelera installed, we would execute the command **cpct_winape** or **cpct_rvm** in the terminal to install them in case we don't have them previously installed.

We must go to the PenguinCross/Source folder PenguinCross/Source and execute the **make** command that will generate the **.dsk**, **.cdt** y **.sna** files. Once these files are obtained we can execute the commands: **cpct_winape -as**, **cpct_rvm -as** (for SNA file), **cpct_rvm -ac** (for CDT file), **cpct_winape -a** and **cpct_rvm -a** (for DSK file).

On the other hand, as we already have the files, we can do the other 2 ways executing the command **cpct_winape** or **cpct_rvm** and following the indicated steps.