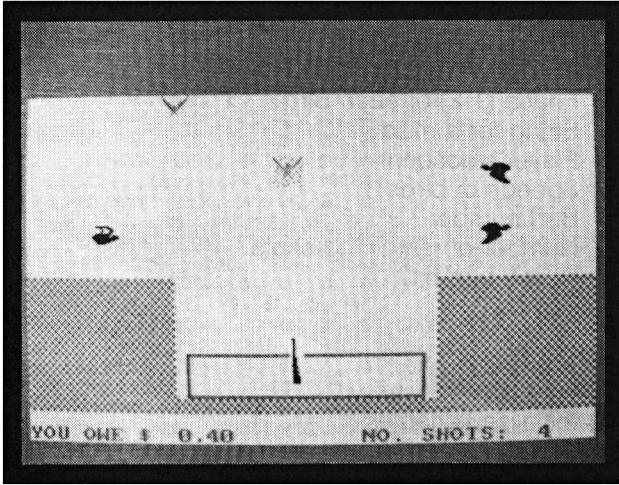


SHOOTING GALLERY



CLASSIFICATION: Target practice game

Step right up and have a go! Only \$1.00 for five shots — and you get five shots free!

Scoring:

front ducks 20c

middle ducks 50c

crazy bird \$1.00

Use the SPACE bar to shoot at the flying targets.

PROGRAMME SUGGESTIONS

The speed of the birds can be altered in lines 1000 — 1080. Or try putting an extra row of birds with different values to add some variety!

PROGRAM Variables

HEAD(5)	Columns required for a hit
HIT\$	Hit bird string
ADD	Amount to add to Player's account
BLANK\$	String to blank birds
BIRD\$(5,2)	Strings for each bird
BIRDY(5), BIRDY(5)	Co-ordinates of birds
PHASE(5)	Phase (1-2) of each Bird
MISS\$	String for a miss
ACCOUNT	Player's account
SPD(5)	Speeds of birds
BD	Bird number
NS	Number of remaining shots
HIT	Which bird hit?
I, J, T1	Temps

Program Structure

Lines	Function/Activity
10 — 380	Initialise variables
400 — 510	Set up screen
530 — 610	Main loop
1000 — 1080	Move birds
2000 — 2100	Fire Gun
3000 — 3030	Update Account
4000 — 4030	Alter phases
5000 — 5030	More shots
9000 — 9040	Game over

Initialise variables

```

10  MODE 1 : INK 0, 13 : INK 1, 0 : INK 2, 6 : INK 3, 1
20  SYMBOL AFTER 220 : SYMBOL 220, 128, 64, 96, 56, 28, 13,
    7, 3 : SYMBOL 221, 1, 2, 0, 0, 0, 0, 0
30  SYMBOL 222, 1, 2, 6, 28, 56, 176, 224, 192 : SYMBOL 223
    , 128, 64, 0, 0, 0, 0, 0, 0
40  SYMBOL 224, 0, 0, 0, 0, 0, 1, 7, 15 : SYMBOL 225, 25, 5
    0, 32, 32, 32, 0, 0, 0
50  SYMBOL 226, 0, 0, 0, 0, 0, 128, 224, 240 : SYMBOL 227,
    152, 76, 4, 4, 4, 0, 0, 0
60  SYMBOL 228, 0, 0, 0, 0, 3, 14, 24, 12 : SYMBOL 229, 6,
    115, 255, 63, 7, 0, 0, 0
70  SYMBOL 230, 0, 0, 0, 252, 32, 64, 32 : SYMBOL 231, 2
    48, 255, 255, 254, 252, 248, 0, 0
80  SYMBOL 232, 0, 0, 0, 1, 115, 255, 63 : SYMBOL 233, 3
    , 7, 7, 3, 0, 0, 0, 0
90  SYMBOL 234, 0, 0, 0, 248, 254, 255, 255 : SYMBOL 235
    , 252, 248, 248, 248, 252, 62, 15, 0
100  SYMBOL 236, 0, 0, 0, 63, 4, 2, 4 : SYMBOL 237, 63, 2
    55, 255, 127, 63, 31, 0, 0
110  SYMBOL 238, 0, 0, 0, 192, 112, 24, 48 : SYMBOL 239,
    224, 206, 255, 252, 224, 0, 0, 0
120  SYMBOL 240, 0, 0, 0, 31, 127, 255, 255 : SYMBOL 241,
    63, 31, 31, 31, 63, 124, 240, 0
130  SYMBOL 242, 0, 0, 0, 128, 206, 255, 252 : SYMBOL 243
    , 192, 224, 224, 192, 0, 0, 0
140  SYMBOL 244, 130, 200, 96, 49, 25, 45, 39, 75 : SYMBOL 2
    45, 19, 5, 66, 4, 65, 144, 4, 34
150  SYMBOL 246, 1, 35, 6, 140, 216, 177, 224, 201 : SYMBOL
    247, 196, 144, 66, 32, 4, 18, 128, 1
160  SYMBOL 248, 96, 32, 32, 32, 32, 32, 32 : SYMBOL 249
    , 32, 32, 48, 48, 48, 112, 56 : SYMBOL 250, 48, 56,
    56, 56, 60, 60, 60, 60
170  SYMBOL 251, 255, 255, 255, 223, 207, 195, 129, 80
180  HIT$ = CHR$( 244 ) + CHR$( 246 ) + CHR$( 10 ) + STRING$
    ( 2, 8 ) + CHR$( 245 ) + CHR$( 247 )
190  BLANK$ = CHR$( 32 ) + CHR$( 32 ) + CHR$( 10 ) + STRING$
    ( 2, 8 ) + CHR$( 32 ) + CHR$( 32 )
200  BIRDS$( 5, 1 ) = CHR$( 220 ) + CHR$( 222 ) + CHR$( 10 )
    + STRING$( 2, 8 ) + CHR$( 221 ) + CHR$( 223 )
210  BIRDS$( 5, 2 ) = CHR$( 224 ) + CHR$( 226 ) + CHR$( 10 )
    + STRING$( 2, 8 ) + CHR$( 225 ) + CHR$( 227 )
220  BIRDS$( 4, 1 ) = CHR$( 228 ) + CHR$( 230 ) + CHR$( 10 )
    + STRING$( 2, 8 ) + CHR$( 229 ) + CHR$( 231 )
230  BIRDS$( 4, 2 ) = CHR$( 232 ) + CHR$( 234 ) + CHR$( 10 )
    + STRING$( 2, 8 ) + CHR$( 233 ) + CHR$( 235 )
240  BIRDS$( 3, 1 ) = BIRDS$( 4, 1 )
250  BIRDS$( 3, 2 ) = BIRDS$( 4, 2 )
260  BIRDS$( 2, 1 ) = CHR$( 236 ) + CHR$( 238 ) + CHR$( 10 )
    + STRING$( 2, 8 ) + CHR$( 237 ) + CHR$( 239 )
270  BIRDS$( 2, 2 ) = CHR$( 240 ) + CHR$( 242 ) + CHR$( 10 )
    + STRING$( 2, 8 ) + CHR$( 241 ) + CHR$( 243 )
280  BIRDS$( 1, 1 ) = BIRDS$( 2, 1 )
290  BIRDS$( 1, 2 ) = BIRDS$( 2, 2 )
300  MISS$ = CHR$( 251 ) : HEAD( 1 ) = 19 : HEAD( 2 ) = 19 :
    HEAD( 3 ) = 19 : HEAD( 4 ) = 19 : HEAD( 5 ) = 20
310  FOR I = 1 TO 5 : PHASE( I ) = INT( RND( 1 ) * 2 ) + 1 :

```

```

NEXT
320 BIRDY( 5 ) = 17 : BIRDY( 5 ) = 3
330 BIRDY( 4 ) = 10 : BIRDY( 4 ) = 7
340 BIRDY( 3 ) = 30 : BIRDY( 3 ) = 7
350 BIRDY( 2 ) = 15 : BIRDY( 2 ) = 11
360 BIRDY( 1 ) = 25 : BIRDY( 1 ) = 11
370 SPD( 4 ) = -2 : SPD( 3 ) = -2
380 SPD( 2 ) = 1 : SPD( 1 ) = 1

```

Setup screen

```

390 :
400 PAPER 0 : CLS : BORDER 1
410 PEN 3 : FOR I = 1 TO 40 : FOR J = 1 TO 2 : LOCATE I, J
: PRINT CHR$( 143 ) : NEXT : NEXT
420 FOR I = 1 TO 11 : FOR J = 15 TO 22 : LOCATE I, J : PRIN
T CHR$( 206 ) : NEXT : NEXT
430 FOR I = 30 TO 40 : FOR J = 15 TO 22 : LOCATE I, J : PRI
NT CHR$( 206 ) : NEXT : NEXT
440 FOR I = 1 TO 40 : LOCATE I, 23 : PRINT CHR$( 206 ) : NE
XT
450 FOR I = 13 TO 28 : LOCATE I, 20 : PRINT CHR$( 208 ) : N
EXT
460 FOR I = 13 TO 28 : LOCATE I, 22 : PRINT CHR$( 210 ) : N
EXT
470 LOCATE 12, 20 : PRINT CHR$( 209 ) : LOCATE 12, 21 : PRI
NT CHR$( 209 ) : LOCATE 12, 22 : PRINT CHR$( 209 )
480 LOCATE 29, 20 : PRINT CHR$( 211 ) : LOCATE 29, 21 : PRI
NT CHR$( 211 ) : LOCATE 29, 22 : PRINT CHR$( 211 )
490 LOCATE 20, 19 : PEN 1 : PRINT CHR$( 248 ) : LOCATE 20,
20 : PRINT CHR$( 249 ) : LOCATE 20, 21 : PRINT CHR$( 250
)
500 EVERY 15, 1 GOSUB 4000
510 NS = 5 : ACCOUNT = 0 : GOSUB 3000

```

Main Program loop

```

520 :
530 FOR BD = 1 TO 5
540 GOSUB 1000
550 IF INKEY( 47 ) > -1 AND HIT = 0 THEN GOSUB 2000 : GOSUB
3000
560 IF NS = 0 THEN GOTO 5000
590 NEXT : HIT = 0
600 LOCATE 20, 2 : PEN 3 : PRINT CHR$( 143 )
610 GOTO 530

```

Move birds

```

700 :
1000 LOCATE BIRDY( BD ), BIRDY( BD )
1010 PRINT USING "&"; BLANK$
1020 BIRDY( BD ) = BIRDY( BD ) + SPD( BD )
1025 IF BIRDY( 1 ) < 0.4 THEN BIRDY( BD ) = BIRDY( BD ) + SPD(
BD )
1030 IF BIRDY( BD ) < 2 THEN BIRDY( BD ) = 37 : ACCOUNT = AC
COUNT - 0.1 : GOSUB 3000
1040 IF BIRDY( BD ) > 37 THEN BIRDY( BD ) = 2 : ACCOUNT = AC

```

```

COUNT = 0.1 : GOSUB 3000
1050 IF BD = 5 THEN PEN 2 ELSE PEN 1
1060 LOCATE BIRD( BD ), BIRDY( BD )
1070 PRINT USING "%&"; BIRDS$( BD, PHASE( BD ) )
1080 RETURN

```

Fire Gun

```

1990 :
2000 ACCOUNT = ACCOUNT - 0.1 : NS = NS - 1 : SOUND 1, 0, 5,
    15, 1, 1, 31 : HIT = 0 : FOR I = 1 TO 5
2010 IF BIRD( I ) = HEAD( I ) THEN HIT = I
2020 NEXT
2030 IF HIT = 0 THEN LOCATE 20, 2 : PEN 3 : PRINT CHR$( 251
    ) : RETURN
2040 LOCATE BIRD( HIT ), BIRDY( HIT )
2050 PEN 2 : PRINT USING "%&"; HIT$
2060 FOR J = 1 TO 3 : FOR I = 1 TO 20 STEP 2 : SOUND 1, I, 5
    , 15 : NEXT : NEXT
2070 IF HIT < 3 THEN ADD = 0.2 ELSE IF HIT < 5 THEN ADD = 0.
    5 ELSE ADD = 1
2080 ACCOUNT = ACCOUNT + ADD
2100 RETURN

```

Update account

```

2990 :
3000 LOCATE 1, 25 : PRINT SPACE$( 38 ) : PEN 3 : LOCATE 1, 2
    5 : IF ACCOUNT < 0 THEN PRINT "YOU_OWE_&$"; ELSE PRINT "Y
    OU_HAVE_&$";
3010 PRINT USING "###.##"; ABS( ACCOUNT )
3020 LOCATE 25, 25 : PRINT "NO._SHOTS : &"; NS
3030 RETURN

```

Alter phases

```

3990 :
4000 FOR T1 = 1 TO 5 : IF PHASE( T1 ) = 1 THEN PHASE( T1 ) =
    2 ELSE PHASE( T1 ) = 1
4010 NEXT
4020 IF RND( 1 ) < 0.5 THEN SPD( 5 ) = -1 ELSE SPD( 5 ) = 1
4030 RETURN

```

More shots ?

```

4990 :
5000 LOCATE 1, 25 : PRINT SPACE$( 38 ) : PEN 3 : LOCATE 1, 2
    5
5010 PRINT "ANOTHER_5_SHOTS_?_(Y/N)"
5020 IF INKEY( 43 ) > -1 THEN 5030 ELSE IF INKEY( 46 ) > -1
    THEN 9000 ELSE 5020
5030 NS = 5 : GOSUB 3000 : GOTO 530

```

Game over

```
8990 :  
9000 CLS : LOCATE 16, 1 : PRINT "GAME_OVER"  
9010 LOCATE 1, 10  
9020 IF ACCOUNT < -0.01 THEN PRINT "THE_BOYS_WILL_BE_SEEING_  
YOU_SHORTLY" ELSE PRINT "CONGRATS_FOR_YOUR_WINNINGS"  
9030 LOCATE 5, 16 : PRINT "ACCOUNT :_$_"; : PRINT USING "###.  
##"; ACCOUNT  
9040 IF INKEY# = "" THEN END ELSE 9040
```

ChexSum Tables

10 = 1325	360 = 1794	1990 = 0
20 = 3007	370 = 1942	2000 = 6074
30 = 2856	380 = 1446	2010 = 3077
40 = 2166	390 = 0	2020 = 176
50 = 2797	400 = 549	2030 = 2699
60 = 2479	410 = 3996	2040 = 2184
70 = 3920	420 = 3849	2050 = 1285
80 = 2441	430 = 3918	2060 = 3301
90 = 4384	440 = 2502	2070 = 5373
100 = 2874	450 = 2512	2080 = 2157
110 = 3570	460 = 2548	2100 = 201
120 = 3310	470 = 3409	2990 = 0
130 = 3703	480 = 3434	3000 = 5034
140 = 3089	490 = 3753	3010 = 1874
150 = 3671	500 = 716	3020 = 1756
160 = 4397	510 = 1897	3030 = 201
170 = 2666	520 = 0	3990 = 0
180 = 5172	530 = 1070	4000 = 5072
190 = 4449	540 = 456	4010 = 176
200 = 5410	550 = 3230	4020 = 3225
210 = 5427	560 = 1424	4030 = 233
220 = 5441	590 = 800	4990 = 0
230 = 5458	600 = 1306	5000 = 1503
240 = 1560	610 = 242	5010 = 1760
250 = 1562	700 = 0	5020 = 3704
260 = 5471	1000 = 1994	5030 = 1220
270 = 5488	1010 = 1180	8990 = 0
280 = 1556	1020 = 2959	9000 = 1362
290 = 1558	1025 = 4959	9010 = 295
300 = 5287	1030 = 5877	9020 = 7218
310 = 3488	1040 = 5874	9030 = 2846
320 = 1775	1050 = 1678	9040 = 1602
330 = 1770	1060 = 1994	
340 = 1788	1070 = 2458	
350 = 1786	1080 = 201	TOTAL = 258676