

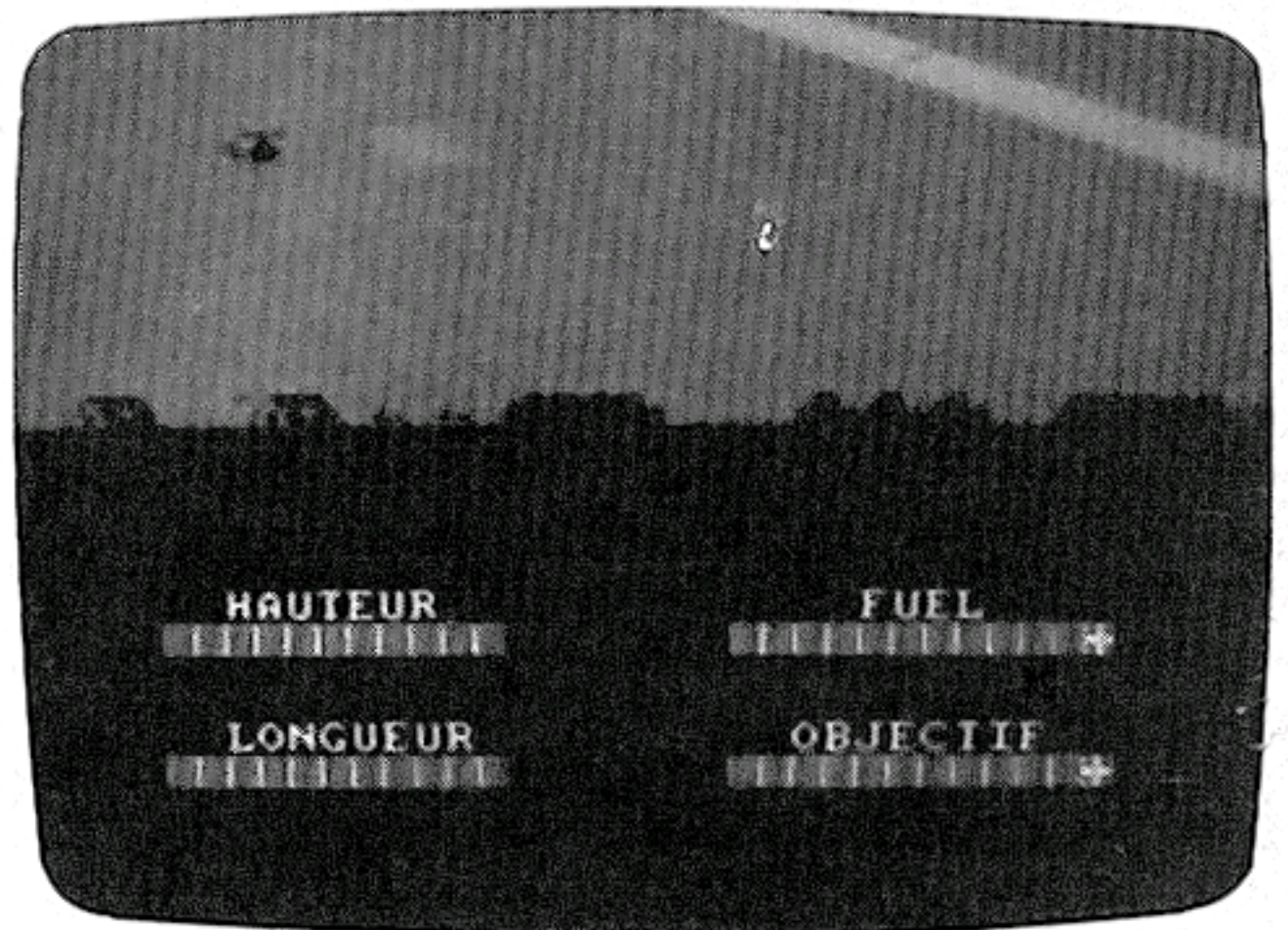
RESCUE MISSION



Claude LE MOULLEC

Aux commandes de votre hélicoptère, vous devez traverser les lignes ennemies pour aller sauver un blessé et le ramener à la base. Vous imaginez que la mission ne sera pas de tout repos. Il vous faudra dans un premier temps esquiver les attaques des hélicoptères adverses qui viendront vous harceler et tenter de vous abattre à l'aide de leurs missiles air-air. Heureusement que votre machine est extrêmement maniable. A proximité du but, vous pourrez, à votre tour, faire usage de vos missiles HOT pour détruire les chars qui infestent votre zone de poser.

Le jeu se joue au clavier ou au joystick à votre convenance, et les principales commandes vous sont indiquées dans le menu. Maintenant que le briefing est terminé, rejoignez votre poste de pilotage et bonne chance ! Au fait, je vous prépare une promotion ou une médaille à titre posthume ?



```

10 REM Claude Le MOULLEC
20 CLS
30 BORDER 0
40 INK 0,0:INK 1,11:INK 2,6:INK 3,24
50 PAPER 0:MODE 0:LOCATE 7,9:PEN 2:PRINT
"SOFTWARE"
60 FOR i=1 TO 80 :INK 1,RND(1)*16+1: PLO
T 155,385-i:DRAW 175,385-i:PLOT 275,385-
i:DRAW 295,385-i:PLOT 345,385-i:DRAW 365
,385-i:PLOT 425,385-i:DRAW 445,385-i:NEX
T
70 FOR i=1 TO 20 :INK 1,RND(1)*16+1: PLO
T 175,325-i:DRAW 215,325-i:PLOT 235,325-
i:DRAW 255,325-i:PLOT 385,325-i:DRAW 405
,325-i:PLOT 450,325-i:DRAW 485,325-i:NEX
T
80 FOR i=0 TO 20 :INK 1,RND(1)*16+1:PLOT
445,385-i:DRAW 485,385-i:PLOT 295,385-i
:DRAW 296+i,385-i:PLOT 345,385-i:DRAW 34
4-i,385-i:NEXT
90 FOR i=0 TO 24 :INK 1,RND(1)*16+1:PLOT
295+i,365-i:DRAW 345-i,365-i:NEXT
100 FOR i=1 TO 15 STEP 2:INK 1,RND(1)*16
+1:PLOT 1,226-i^2:DRAW 639,226-i^2,1:PLO
T 320,225:DRAW 1,226-i^2:PLOT 320,225:DR
AW 639,226-i^2,1:NEXT i:PLOT 320,225:DR
AW 100,1,1:PLOT 320,225:DRAW 540,1,1:PLOT
320,225:DRAW 250,1,1:PLOT 320,225:DRAW
390,1,1
110 INK 1,11:PEN 8:LOCATE 7,16:PRINT"pre
sente"
120 PEN 3:PRINT CHR$(22)+CHR$(1):LOCATE

```

```

3,20:PRINT" RESCUE MISSION"
130 PEN 15:LOCATE 1,24:PRINT "YOUR GAME
IS LOADING"
140 RUN "!RESCUE1"

10 REM :::::::::::::::::::::::::::::::::::::
20 REM :
30 REM : CLAUDE LE MOULLEC :
40 REM :
50 REM : ET CPC :
60 REM :
70 REM : Presentent RESCUE :
80 REM :
90 REM :::::::::::::::::::::::::::::::::::::
100 '
120 GOSUB 2490:REM variables
130 GOSUB 4690:REM regles
140 REM :::::::::::tableau::::::::::::::::::
150 MODE 1:BORDER 0
160 WINDOW #1,1,40,3,16
170 WINDOW #2,1,40,17,25
180 INK 0,0::INK 1,0:INK 2,0:INK 3,0
190 PAPER #1,0:CLS #1
200 PAPER #2,2:CLS #2
210 FOR H= 14 TO 16:PEN 1
220 LOCATE 1,h:PRINT STRING$(40,CHR$(143
))
230 NEXT h
240 LOCATE #1,1,11:PEN #1,1:PRINT #1,ca$
;cb$:LOCATE #1,8,11:PEN #1,2:PRINT #1,he
2$
250 GOSUB 3170

```

```

260 INK 0,14:INK 1,12:INK 2,0:INK 3,26
270 x=8:
280 FOR t=1 TO 2000:NEXT
290 IF foi=1 THEN GOTO 320
300 ph%=ph1$:GOSUB 4950
310 ph%=ph2$:GOSUB 4950:foi=1
320 GOSUB 1760
330 EVERY 650,2 GOSUB 3110
340 EVERY 950,1 GOSUB 3280
350 SOUND 1,200,-2000,1,1,1,5
360 REM::::::::::::::::::::::::::
370 REM
380 REM deplacement des collines
390 REM
400 REM::::::::::::::::::::::::::
410 FOR h=0 TO 320 STEP esc
420 DI:TAG
430 MOVE c1-h,207:PRINT ca%;cb%;cc%;
440 GOSUB 1440
450 EI:NEXT h:GOSUB 3490
460 FOR h=0 TO 320 STEP esc
470 DI:TAG
480 MOVE c1-h,207:PRINT cb%;cc%;cc%;
490 GOSUB 1440
500 EI:NEXT h:GOSUB 3490
510 FOR h=0 TO 320 STEP esc
520 DI:TAG
530 MOVE c1-h,207:PRINT cc%;cc%;c1%;
540 GOSUB 1440
550 EI:NEXT h
560 FOR h=0 TO 320 STEP esc
570 DI:TAG
580 MOVE c1-h,207:PRINT cc%;c1%;
590 MOVE c2-h,192:PRINT c2$
600 GOSUB 1440
610 EI:NEXT h:GOSUB 3490
620 FOR h=0 TO 320 STEP esc
630 DI:TAG
640 MOVE c1-h,207:PRINT c1%;
650 MOVE 320-h,192:PRINT c2$;
660 MOVE c2-h,177:PRINT c9%;
670 GOSUB 1440
680 EI:NEXT h
690 FOR h=0 TO 320 STEP esc
700 DI:TAG
710 MOVE c1-h,192:PRINT c2$;
720 MOVE 320-h,177:PRINT c9%;c5%;
730 GOSUB 1440
740 EI:NEXT h:GOSUB 3490
750 FOR h=0 TO 320 STEP esc
760 DI:TAG
770 MOVE c1-h,177:PRINT c9%;c5%;
780 MOVE 640-h,192:PRINT c4$;
790 GOSUB 1440
800 EI:NEXT h
810 FOR h=0 TO 320 STEP esc
820 DI:TAG
830 MOVE c1-h,177:PRINT c5$;
840 MOVE 320-h,192:PRINT c4%;c2$;
850 GOSUB 1440
860 EI:NEXT h
870 FOR h=0 TO 320 STEP esc
880 DI:TAG
890 MOVE c1-h,192:PRINT c4%;c2%;c3%;
900 GOSUB 1440
910 EI:NEXT h:GOSUB 3490
920 FOR h=0 TO 320 STEP esc

```

```

930 DI:TAG
940 MOVE c1-h,192:PRINT c2%;c3%;
950 MOVE 640-h,207:PRINT c4$;
960 GOSUB 1440
970 EI:NEXT h:GOSUB 3490
980 FOR h=0 TO 320 STEP esc
990 DI:TAG
1000 MOVE c1-h,192:PRINT c3$;
1010 MOVE 320-h,207:PRINT c4$;
1020 MOVE 640-h,222:PRINT c1$;
1030 GOSUB 1440
1040 EI:NEXT h:GOSUB 3490
1050 FOR h=0 TO 320 STEP esc
1060 DI:TAG
1070 MOVE c1-h,207:PRINT c4$;
1080 MOVE 320-h,222:PRINT c1%;c3%;
1090 GOSUB 1440
1100 EI:NEXT h:GOSUB 3490
1110 FOR h=0 TO 320 STEP esc
1120 DI:TAG
1130 MOVE c1-h,222:PRINT c1%;c3%;
1140 MOVE 640-h,237:PRINT c1$;
1150 GOSUB 1440
1160 EI:NEXT h:GOSUB 3490
1170 FOR h=0 TO 320 STEP esc
1180 DI:TAG
1190 MOVE c1-h,222:PRINT c3$;
1200 MOVE 320-h,237:PRINT c1$;
1210 MOVE 640-h,222:PRINT c2$;
1220 GOSUB 1440
1230 EI:NEXT h
1240 FOR h=0 TO 320 STEP esc
1250 DI:TAG
1260 MOVE c1-h,237:PRINT c1$;
1270 MOVE 320-h,222:PRINT c2$;
1280 MOVE 640-h,207:PRINT c2$;
1290 GOSUB 1440
1300 EI:NEXT h:GOSUB 3490:temps=REMAIN(2
)
1310 FOR h=0 TO 320 STEP esc
1320 DI:TAG
1330 MOVE c1-h,222:PRINT c2$;
1340 MOVE 320-h,207:PRINT c2%;cq%;
1350 GOSUB 1440
1360 EI:NEXT h
1370 FOR h=0 TO 320 STEP esc
1380 DI:TAG
1390 MOVE c1-h,207:PRINT c2%;cq%;cr%;
1400 GOSUB 1440
1410 EI:NEXT h:GOSUB 3490
1420 IF ret=1 THEN GOTO 3660
1430 GOTO 3560
1440 REM::::::::::::::::::::::::::
1450 REM
1460 REM deplacement helico
1470 REM
1480 REM::::::::::::::::::::::::::
1490 TAGOFF:PEN 2
1500 LOCATE x,y:PRINT " "
1510 a%=INKEY$
1520 IF a%=f1$ THEN x=x+1:IF x>20 THEN x
=20
1530 IF a%=f2$ THEN x=x-1:IF x<4 THEN x=
4
1540 IF a%=f3$ THEN y=y-1:IF y<2 THEN y=
2
1550 IF a%=f4$ THEN y=y+1

```

```

1560 LOCATE x,y:PRINT hel$
1570 IF TEST((x*16)+17,(25-y)*16-5)=1 TH
EN GOTO 1910
1580 IF he=1 THEN GOTO 1600 ELSE RETURN
1590 RETURN
1600 REM ::::::::::::::::::::
1610 REM
1620 REM displacement 2eme helico
1630 REM
1640 REM ::::::::::::::::::::
1650 LOCATE xh1+1,INT(yh1):PRINT " "
1660 IF y<yh1 THEN yh1=yh1-0.7
1670 IF y>yh1 THEN yh1=yh1+0.7
1680 IF yh1<2 THEN yh1=2
1690 LOCATE xh1,INT(yh1):PRINT h21$
1700 IF (xh1-x)=9 OR (xh1-x)=10 THEN GOS
UB 2210
1710 IF xh1=x AND INT(yh1)=y THEN 1910
1720 IF xh1=x+1 AND INT(yh1)=y THEN 1910
1730 xh1=xh1-2:IF xh1<0 THEN GOTO 1750
1740 RETURN
1750 LOCATE 1,INT(yh1):PRINT " ":he=0:
RETURN
1760 REM::::::::::::::::::
1770 REM
1780 REM decollage helico
1790 REM
1800 REM::::::::::::::::::
1810 ik$=INKEY$:i$=UPPER$(ik$):IF i$<>"D
" THEN 1810
1820 LOCATE x,13:PRINT " ":PEN 2
1830 FOR h=1 TO 8
1840 FOR g=1 TO 8:SOUND 1,200,10,1,1,1,5

1850 LOCATE x,13-h:PRINT he2$
1860 FOR T=1 TO 10:NEXT T
1870 LOCATE x,13-h:PRINT hel$
1880 NEXT g:LOCATE x,13-h:PRINT " "
1890 NEXT h
1900 LOCATE x,5:PRINT hel$:RETURN
1910 REM::::::::::::::::::
1920 REM
1930 REM scrah
1940 REM
1950 REM::::::::::::::::::
1960 IF y>11 THEN LOCATE x,y:PRINT " "
1970 IF y=11 OR y<11 THEN LOCATE x,y:PRI
NT " "
1980 MC=1 :PA=244:BORDER 0,26
1990 CALL &BCA7:SOUND 130,0,-1,15,3,,30
2000 FOR h= 1 TO 15
2010 LOCATE x+mc,y-mc:PRINT CHR$(pa)
2020 LOCATE x+mc,y-1:PRINT CHR$(pa)
2030 LOCATE x,y-mc:PRINT CHR$(pa)
2040 LOCATE x,y:PRINT CHR$(pa)
2050 LOCATE x+mc,y-mc:PRINT CHR$(32)
2060 FOR t= 1 TO 30:NEXT t
2070 LOCATE x+mc,y-1:PRINT CHR$(32)
2080 LOCATE x,y-mc:PRINT CHR$(32)
2090 MC=MC+1:PA=PA+1:IF pa=248 THEN pa=2
44
2100 IF y-mc<1 THEN GOTO 2130
2110 FOR t= 1 TO 30:NEXT t
2120 NEXT h
2130 FOR h= 1 TO 15:PEN (pa-243)
2140 LOCATE x,y:PRINT CHR$(pa)
2150 MC=MC+1:PA=PA+1:IF pa=248 THEN pa=2

```

```

44
2160 FOR t=1 TO 50:NEXT t:NEXT h
2170 FOR t= 1 TO 2000:NEXT :BORDER 0:
2180 GOSUB 5070:ob=0:GOSUB 2950
2190 he=0:temps=REMAIN(2):tep=REMAIN(1)
2200 score=0:GOTO 140
2210 REM ::::::::::::::::::::
2220 REM
2230 REM tir de l helico ennemi
2240 REM
2250 REM ::::::::::::::::::::
2260 SOUND 130,0,-1,15,2,,30:FOR ti=1 TO
10
2270 PEN 3:xth=xh1-ti:yh1=INT(yh1)
2280 LOCATE xth,yh1:PRINT CHR$(232)
2290 IF xth=x+1 AND yh1=y THEN GOTO 1910

2300 IF xth=x AND yh1=y THEN GOTO 1910
2310 IF TI=3 OR TI=6 OR ti=9 THEN GOSUB
2340
2320 LOCATE xth,yh1:PRINT CHR$(32)
2330 NEXT ti:xth=0:RETURN
2340 REM ::::::::::::::::::::
2350 REM
2360 REM helico 1 pendant les tirs
2370 REM
2380 REM ::::::::::::::::::::
2390 PEN 2:LOCATE x,y:PRINT " "
2400 PEN 2:LOCATE x,y:PRINT " "
2410 a$=INKEY$
2420 IF a$=f1$ THEN x=x+1:IF x>15 THEN x
=15
2430 IF a$=f2$ THEN x=x-1:IF x<4 THEN x=
4
2440 IF a$=f3$ THEN y=y-1:IF y<2 THEN y=
2
2450 IF a$=f4$ THEN y=y+1
2460 LOCATE x,y:PRINT hel$
2470 IF TEST((x*16)+28,(25-y)*16-7)=1 TH
EN GOTO 1910
2480 RETURN
2490 REM ::::::::::::::::::::
2500 REM
2510 REM variables
2520 REM
2530 REM ::::::::::::::::::::
2540 ENV 1,100,3,1:ENT 1,100,2,2:ENV 2,5
,-2,15:ENV 3,5,-2,50
2550 score=0:record=0:SYMBOL AFTER 213
2560 SYMBOL 215,192,192,224,230,254,255,
255,255
2570 SYMBOL 214,3,7,55,63,127,127,255,25
5
2580 SYMBOL 216,197,255,255,255,255,255,
255,255
2590 SYMBOL 217,0,0,0,0,0,0,0,196
2600 SYMBOL 218,7,0,160,64,177,31,0,0:RE
M heli 11
2610 SYMBOL 219,255,32,112,252,198,254,2
52,136:REM heli 12
2620 SYMBOL 220,0,0,64,224,81,31,0,0:REM
heli 13
2630 SYMBOL 221,248,32,112,252,198,254,2
52,136:REM heli 14
2640 SYMBOL 222,255,4,14,63,99,127,63,18
:REM heli 21
2650 SYMBOL 223,224,5,2,5,140,248,0,0:RE

```

```

M heli 22
2660 SYMBOL 224,0,0,8,0,40,4,2,1:REM mis
s desc
2670 SYMBOL 226,32,24,6,1,0,15,4,3:REM t
ank 1
2680 SYMBOL 227,0,0,96,240,248,255,2,252
:REM tank 2
2690 SYMBOL 228,0,0,0,7,5,29,31,4:REM ca
m 1
2700 SYMBOL 229,192,96,48,24,44,38,255,1
8:REM cam 2
2710 SYMBOL 230,128,128,128,128,128,128,
128,128
2720 SYMBOL 231,0,0,0,0,128,120,128,0:RE
M miss ->
2730 SYMBOL 232,0,0,0,0,1,62,1,0:REM mis
s <-
2740 SYMBOL 233,0,0,6,15,31,255,64,63:RE
M tank 21
2750 SYMBOL 234,4,24,96,128,0,240,32,192
:REM tank 22
2760 SYMBOL 235,0,0,0,32,32,231,255,66:R
EM jeep
2770 SYMBOL 236,0,255,239,199,239,255,25
5,6:REM cam 3
2780 SYMBOL 237,7,11,17,32,78,78,142,142
:REM abris 1
2790 SYMBOL 238,255,255,254,254,120,126,
62,63:REM abris 2
2800 SYMBOL 239,224,240,248,252,62,254,2
54,255:REM abris 3
2810 HE1$=CHR$(218)+CHR$(219)
2820 HE2$=CHR$(220)+CHR$(221)
2830 H21$=CHR$(222)+CHR$(223)
2840 TAK$=CHR$(226)+CHR$(227)+CHR$(32)
2850 tk$=CHR$(226)+CHR$(227)
2860 tr$=CHR$(22)+CHR$(1)
2870 nr$=CHR$(22)+CHR$(0)
2880 cam1$=CHR$(228)+CHR$(229)
2890 cam2$=CHR$(228)+CHR$(236)
2900 abri$=CHR$(237)+CHR$(238)+CHR$(239)
2910 col5$=CHR$(214)+CHR$(216)+CHR$(216)
+CHR$(216)+CHR$(215)
2920 col4$=CHR$(214)+CHR$(216)+CHR$(216)
+CHR$(215)
2930 col3$=CHR$(214)+CHR$(216)+CHR$(215
)
2940 c1$=col5$+CHR$(217)+tk$+CHR$(217)+t
k$+CHR$(217)+col4$+CHR$(217)+cam1$+CHR$(
32)
2950 ca$=col5$++CHR$(32)+CHR$(32)+CHR$(3
2)+CHR$(32)+CHR$(32)+CHR$(32)+abri$++CHR
$(217)+CHR$(235)+CHR$(217)+cam2$+CHR$(32
)
2960 cb$=CHR$(32)+abri$+CHR$(217)+CHR$(2
17)+abri$+CHR$(217)+CHR$(235)+CHR$(217)+
CHR$(235)+CHR$(217)+col5$+CHR$(32)
2970 cc$=CHR$(217)+CHR$(217)+CHR$(217)+C
HR$(214)+CHR$(215)+CHR$(214)+CHR$(215)+C
HR$(214)+CHR$(215)+CHR$(217)+CHR$(217)+C
HR$(214)+CHR$(216)+CHR$(216)+CHR$(216)+C
HR$(216)+CHR$(215)+CHR$(214)+CHR$(215)+C
HR$(217)
2980 c2$=CHR$(215)+CHR$(217)+CHR$(217)+t
k$+CHR$(217)+CHR$(214)+CHR$(215)+tk$+cam
1$+cam1$+col3$+tk$+CHR$(32)
2990 c9$=CHR$(215)+tk$+col5$+CHR$(217)+C

```

```

HR$(217)+cam1$+cam1$+CHR$(217)+tk$+CHR$(
217)+CHR$(214)+CHR$(143)
3000 c3$=CHR$(217)+tk$+col5$+CHR$(217)+C
HR$(217)+cam1$+cam1$+CHR$(217)+tk$+CHR$(
217)+CHR$(214)+CHR$(143)
3010 c4$=CHR$(217)+tk$+tk$+CHR$(217)+CHR
$(214)+CHR$(215)+CHR$(217)+cam1$+cam1$+C
HR$(217)+CHR$(217)+tk$+CHR$(217)+CHR$(21
4)+CHR$(143)
3020 c5$=CHR$(215)+CHR$(217)+CHR$(235)+C
HR$(217)+tk$+CHR$(217)+tk$+CHR$(217)+tk$
+CHR$(217)+CHR$(217)+cam1$+CHR$(217)+CHR
$(217)+CHR$(214)+CHR$(143)
3030 cq$=CHR$(32)+CHR$(32)+CHR$(32)+CHR$(
32)+CHR$(32)+CHR$(214)+CHR$(215)+CHR$(2
17)+col3$+CHR$(32)+CHR$(32)+CHR$(32)+CHR
$(32)+CHR$(32)+abri$+CHR$(32)
3040 cR$=CHR$(32)+CHR$(32)+CHR$(235)+CHR
$(32)+CHR$(214)+CHR$(215)+CHR$(214)+CHR$(
215)+CHR$(214)+CHR$(215)+CHR$(32)+CHR$(
32)+CHR$(32)+CHR$(32)+CHR$(32)+CHR$(32)+
CHR$(32)+CHR$(32)+CHR$(32)+CHR$(32)
3050 c1=0:c2=640:esc=16:pas=0:x=8:y=5:yh
1=5
3060 f1$=CHR$(9):f2$=CHR$(8):f3$=CHR$(11
):f4$=CHR$(10):FU=0:xv1=6:xv2=6
3070 ph1$=" MISSION DE SAUVETAGE SUR ZO
NE PL420
3080 ph2$=" DECOLLAGE IMMEDIAT POUR
FX22 "
3090 ph3$=" BLESSE A BORD - PARE POUR L
E RETOUR "
3100 RETURN
3110 REM::::::::::::::::::::::::::::::::::
3120 REM
3130 REM parametres 2 eme helico
3140 REM
3150 REM::::::::::::::::::::::::::::::::::
3160 DI:he=1:xh1=39:yh1=6:EI:RETURN
3170 REM ::::::::::::::::::::::::::::::::::::
3180 REM
3190 REM tableau de bord
3200 REM
3210 REM ::::::::::::::::::::::::::::::::::::
3220 PRINT TR$:LOCATE 8,19:PEN 3:PRINT"H
AUTEUR FUEL"
3230 LOCATE 4,23:PRINT" LONGUEUR
OBJECTIF":PRINT NR$
3240 LOCATE 6,20:PRINT STRING$(11,CHR$(
230))
3250 LOCATE 24,20:PRINT STRING$(12,CHR$(
230)):PRINT tr$:LOCATE 35,20:PRINT CHR$(
159): PRINT nr$
3260 LOCATE 6,24:PRINT STRING$(11,CHR$(
230))
3270 LOCATE 24,24:PRINT STRING$(12,CHR$(
230)):PRINT tr$:LOCATE 35,24:PRINT CHR$(
159): PRINT nr$:RETURN
3280 REM ::::::::::::::::::::::::::::::::::::
3290 REM
3300 REM FUEL
3310 REM
3320 REM ::::::::::::::::::::::::::::::::::::
3330 DI:TAGOFF:PEN 3:LOCATE 35-FU,20:PRI
NT CHR$(230)
3340 FU=FU+1:IF fu>11 THEN PEN 2:GOTO 33
70

```

```

3350 PRINT tr$:LOCATE 35-FU,20:PRINT CHR
$(159):PRINT nr$:PEN 2
3360 EI:RETURN
3370 REM ::::::::::::::::::::
3380 REM
3390 REM      plus de fuel
3400 REM
3410 REM ::::::::::::::::::::
3420 LOCATE x,y:PRINT " "
3430 y=y+1
3440 FOR g=1 TO 10
3450 LOCATE x,y:PRINT he1$
3460 LOCATE x,y:PRINT he2$
3470 IF TEST((x*16)+17,(25-y)*16-5)=1 TH
EN GOTO 1910
3480 NEXT g:GOTO 3420
3490 REM ::::::::::::::::::::
3500 REM
3510 REM      objectif
3520 REM
3530 REM ::::::::::::::::::::
3540 DI:TAGOFF:PEN 3:LOCATE 35-ob,24:PRI
NT CHR$(230)
3550 score=score+100:ob=ob+1:PRINT tr$:L
OCATE 35-ob,24:PRINT CHR$(159):PRINT nr
$:PEN 2:EI:RETURN
3560 REM ::::::::::::::::::::
3570 REM
3580 REM      phase finale
3590 REM
3600 REM ::::::::::::::::::::
3610 FOR h= 1 TO 145
3620 DI:TAG
3630 MOVE 640-h,207:PRINT tak$:
3640 IF h/10=INT(h/10) THEN GOSUB 1440
3650 EI:NEXT h :TAGOFF
3660 REM ::::::::::::::::::::
3670 REM
3680 REM      dep heli phase finale
3690 REM
3700 REM ::::::::::::::::::::
3710 DI:PEN 2:a$=INKEY$:a$=UPPER$(a$)
3720 LOCATE x,y:PRINT " "
3730 IF a$=f1$ THEN x=x+1:IF x>20 THEN x
=20
3740 IF a$=f2$ THEN x=x-1:IF x<4 THEN x=
4
3750 IF a$=f3$ THEN y=y-1:IF y<2 THEN y=
2
3760 IF a$=f4$ THEN y=y+1
3770 IF a$="M" AND ret<>1 THEN GOSUB 386
0
3780 IF a$="A" THEN GOSUB 4210
3790 IF a$=CHR$(32) AND mi>0 THEN GOSUB
3920
3800 IF JOY(0)=16 AND mi>0 THEN GOSUB 39
20
3810 IF x>7 AND x<19 AND mi<>0 THEN GOSU
B 4110
3820 IF Y<11 AND mi<>0 THEN GOSUB 4180
3830 LOCATE x,y:PEN 2:PRINT he1$
3840 IF TEST((x*16)+17,(25-y)*16-5)=1 TH
EN GOTO 1910
3850 FOR t= 1 TO 100:NEXT t:EI:GOTO 3660
3860 REM ::::::::::::::::::::
3870 REM
3880 REM      armement des missiles

```

```

3890 REM
3900 REM ::::::::::::::::::::
3910 DI:PEN 3:mi=2:LOCATE 19,20:PRINT "
M ":LOCATE 19,24:PRINT mi:PEN 2:EI:RETUR
N
3920 REM ::::::::::::::::::::
3930 REM
3940 REM      tir missile
3950 REM
3960 REM ::::::::::::::::::::
3970 DI:chan=INT(RND*4)+8:xhot=x+chan+2
3980 LOCATE x,y:PRINT he1$:SOUND 130,0,-
1,15,2,,30:FOR h= x+3 TO xhot :PEN 3
3990 LOCATE h,y:PRINT CHR$(231)
4000 FOR t= 1 TO 50:NEXT t
4010 LOCATE h,y:PRINT " ":NEXT h
4020 yhot=y:FOR h=xhot TO xhot+8
4030 IF yhot>13 THEN GOTO 4070
4040 LOCATE h,yhot:PRINT CHR$(224)
4050 FOR t= 1 TO 50:NEXT t
4060 LOCATE h,yhot:PRINT " ":yhot=yhot+1
4070 NEXT h
4080 mi=mi-1:LOCATE 19,24:PEN 3:PRINT mi

4090 IF xhot+8=32 OR xhot+8=33 THEN tks=
1:mi=0:GOSUB 5170
4100 EI:RETURN
4110 REM ::::::::::::::::::::
4120 REM
4130 REM      longueur du tir
4140 REM
4150 REM ::::::::::::::::::::
4160 PEN 3:LOCATE xv1,24:PRINT CHR$(230)

4170 xv1=6:xv1=xv1+(x-8):PRINT tr$:LOCAT
E xv1,24:PRINT CHR$(159):PRINT nr$:PEN 2
:RETURN
4180 REM      hauteur de tir
4190 PEN 3:LOCATE xv2,20:PRINT CHR$(230)

4200 xv2=6:xv2=xv2+y:PRINT tr$:LOCATE xv
2,20:PRINT CHR$(159):PRINT nr$:PEN 2:RET
URN
4210 REM ::::::::::::::::::::
4220 REM
4230 REM      atterrissage
4240 REM
4250 REM ::::::::::::::::::::
4260 CALL &BCA7:FOR h=y TO 12
4270 FOR g=1 TO 8:SOUND 1,200,10,1,1,1,5

4280 LOCATE x,h:PRINT he1$
4290 FOR T=1 TO 10:NEXT t
4300 LOCATE x,h:PRINT he2$
4310 NEXT g:LOCATE x,h:PRINT " "
4320 NEXT h
4330 FOR t= 20 TO 1 STEP -1:LOCATE x,h:P
RINT he2$:SOUND 1,200,10,1,1,1,t:FOR n=
1 TO 10:NEXT n:
4340 LOCATE x,h:PRINT he1$:NEXT t:FOR t=
1 TO 1500:NEXT
4350 IF ret=1 GOTO 4620
4360 IF x<12 OR x>14 THEN y=h:GOSUB 1910

4370 IF tks<>1 THEN GOSUB 4390
4380 GOTO 4510
4390 REM ::::::::::::::::::::

```

```

4400 REM
4410 REM          tir du tank
4420 REM
4430 REM ::::::::::::::::::::::::::::::::::::
4440 ttk$="12344444444444443210"
4450 SOUND 130,0,-1,15,2,,30:FOR h= 1 TO
  19
4460 k$=MID$(ttk$,h,1):k=VAL(k$)
4470 LOCATE 33-h,13-k:PRINT CHR$(46)
4480 FOR t= 1 TO 20:NEXT t
4490 LOCATE 33-h,13-k:PRINT CHR$(32)
4500 NEXT h:x=12:y=13:GOTO 1910
4510 REM ::::::::::::::::::::::::::::::::::::
4520 REM ::::::::::::::::::::::::::::::::::::
4530 REM
4540 REM          retour
4550 REM
4560 REM ::::::::::::::::::::::::::::::::::::
4570 CLS #2:foi=1:fu=0:ob=0:GOSUB 3170
4580 FOR t=1 TO 3000:NEXT t
4590 ph$=ph3$:GOSUB 4950:score=score+100
  0
4600 x$=ca$:y$=cb$:ca$=cq$:cb$=cr$:cq$=x
  $:cr$=y$
4610 ret=1:GOTO 320
4620 IF x<6 OR x>10 THEN y=h:GOSUB 1910

4630 GOSUB 5070
4640 CLS:LOCATE 12,12:PEN 1:PRINT"UNE AU
  TRE ? (O/N)"
4650 A$=INKEY$:a$=UPPER$(a$):IF a$="" TH
  EN GOTO 4650
4660 IF a$="N" THEN END
4670 IF a$="O" THEN RUN
4680 GOTO 4650
4690 REM ::::::::::::::::::::::::::::::::::::
4700 REM
4710 REM          regles
4720 REM
4730 REM ::::::::::::::::::::::::::::::::::::
4740 MODE 1:BORDER 0:INK 0,0:INK 1,24:IN
  K 2,6:INK 3,26
4750 CLS:LOCATE 12,12:PEN 1:PRINT"LES RE
  GLES ? (O/N)":PEN 2:LOCATE 12,13:PRINT"-
  -----"
4760 A$=INKEY$:a$=UPPER$(a$):IF a$="" TH
  EN GOTO 4760
4770 IF a$="N" THEN RETURN
4780 IF a$="O" THEN GOTO 4800
4790 GOTO 4760
4800 CLS:PEN 1:LOCATE 2,2:PRINT"VOTRE MI
  SSION":PEN 2:LOCATE 2,3:PRINT"=====
  ==="
4810 PEN 3:LOCATE 1,4:PRINT"          Aux com
  mandes de votre helicoptere          vous de
  vez traverser les lignes en-          nemies
  pour charger un blesse et le          ramener
  a la base."
4820 PEN 1:LOCATE 2,9:PRINT"VOTRE ARMEME
  NT":PEN 2:LOCATE 2,10:PRINT"=====
  ==="
4830 PEN 3:LOCATE 1,11:PRINT"          Deux m
  issiles Hots utilisables seu-          lemen
  t a l'approche de l'objectif."
4840 PEN 1:LOCATE 2,14:PRINT"AUTRES COMM
  ANDES":PEN 2:LOCATE 2,15:PRINT"=====

```

```

=====
4850 PEN 1:LOCATE 7,17:PRINT" A ";:PEN 2
  :PRINT" - atterrissage"
4860 PEN 1:LOCATE 7,19:PRINT" D ";:PEN 2
  :PRINT" - decollage"
4870 PEN 1:LOCATE 7,21:PRINT" M ";:PEN 2
  :PRINT" - armement des missiles"
4880 PEN 1:LOCATE 7,23:PRINT"esp";:PEN 2
  :PRINT" - feu en mode clavier"
4890 PEN 3:LOCATE 7,25:PRINT" J - JOYSTI
  CK ";:PRINT" C - CURSEUR"
4900 A$=INKEY$:a$=UPPER$(a$):IF a$="" TH
  EN GOTO 4900
4910 IF a$="J" THEN RETURN
4920 IF a$="C" THEN GOTO 4940
4930 GOTO 4900
4940 f1$=CHR$(243):f2$=CHR$(242):f3$=CHR
  $(240):f4$=CHR$(241):RETURN
4950 REM ::::::::::::::::::::::::::::::::::::
4960 REM
4970 REM          messages
4980 REM
4990 REM ::::::::::::::::::::::::::::::::::::
5000 FOR H= 1 TO LEN (ph$):PEN 3
5010 ph0$=MID$(ph$,h,1)
5020 LOCATE h,1:PRINT ph0$:SOUND 1,20,1,
  7
5030 FOR t=1 TO 30:NEXT t
5040 NEXT h
5050 FOR t= 1 TO 3000:NEXT t
5060 LOCATE 1,1:PRINT STRING$(40,CHR$(32
  )):RETURN
5070 REM ::::::::::::::::::::::::::::::::::::
5080 REM
5090 REM          score/record
5100 REM
5110 REM ::::::::::::::::::::::::::::::::::::
5120 MODE 1:INK 0,0:INK 1,24:INK 2,6:INK
  3,26:CLS
5130 LOCATE 15,10:PEN 2:PRINT " SCORE =
  ";:PEN 1:PRINT score
5140 IF score>record THEN record=score
5150 LOCATE 15,14:PEN 2:PRINT "RECORD =
  ";:PEN 1:PRINT record
5160 FOR h= 1 TO 4000:NEXT:RETURN
5170 REM ::::::::::::::::::::::::::::::::::::
5180 REM
5190 REM          explosion tank
5200 REM
5210 REM ::::::::::::::::::::::::::::::::::::
5220 MC=1 :PA=244:LOCATE 32,13:PRINT "
  ":SOUND 130,0,-1,15,3,,30
5230 FOR h= 1 TO 6
5240 LOCATE 32+mc,13-mc:PRINT CHR$(pa)
5250 LOCATE 32+mc,12:PRINT CHR$(pa)
5260 LOCATE 32,13:PRINT CHR$(pa)
5270 LOCATE 32,13-mc:PRINT CHR$(pa)
5280 FOR t= 1 TO 30:NEXT t
5290 LOCATE 32+mc,13-mc:PRINT CHR$(32)
5300 LOCATE 32+mc,12:PRINT CHR$(32)
5310 LOCATE 32,13:PRINT CHR$(32)
5320 LOCATE 32,13-mc:PRINT CHR$(32)
5330 MC=MC+1:PA=PA+1:IF pa=248 THEN pa=2
  44
5340 FOR t= 1 TO 30:NEXT t
5350 NEXT h :RETURN ■

```