

## Alien Attack

Dieses Game ist einem alten und bekannten Videospiel nachempfunden. Wieder einmal kommen Angreifer aus dem All. Ihr Ziel ist es, den Planeten in Besitz zu nehmen. Da sich keine Freiwilligen zur Verteidigung fanden, übernahmen Sie diese Aufgabe. Nun steuern Sie also einen Abwehrlaser und versuchen, die Invasoren zu besiegen.

Nach dem Erscheinen des Titels finden Sie sich im Weltraum wieder. Über Ihnen schweben die Angreifer. Holen Sie nun einen nach dem anderen vom Himmel, indem Sie Ihren Laser mit dem Joystick hin- und

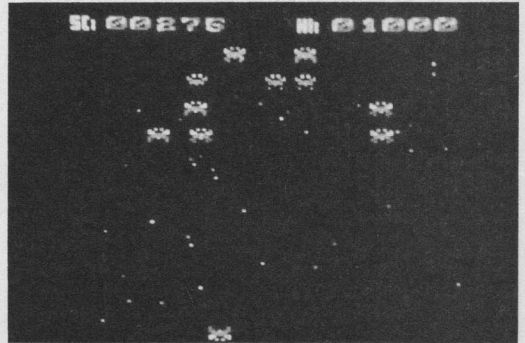
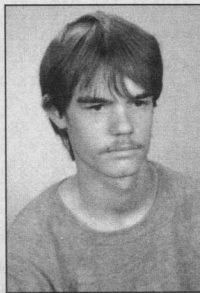
# Spiel des Monats

## Lebenslauf zu Spiel des Monats

Beim "Spiel des Monats" fiel unsere Wahl diesmal auf "Alien Attack." "Wie der Titel schon vermuten läßt, fällt Ihnen hier die Aufgabe zu, Angreifer aus dem All abzuwehren. Dazu steht ein Laser zur Verfügung. Ob es Ihnen gelingt, Ihren Heimatplaneten erfolgreich zu verteidigen?"

Erdacht und geschrieben wurde "Alien Attack" von Alexander Borst aus Oberkochen. Er ist 18 Jahre alt und besucht zur Zeit die 12. Klasse des Gymnasiums. Mit einem Computer kam unser Autor vor drei Jahren in der Schule erstmals in nähere Berührung. Von solchen Geräten fasziniert, kaufte er bald darauf einen CPC 664 und begann, Spiele und Anwendungen in Basic zu programmieren. Später wandte er sich dann der Maschinensprache zu.

In seiner Freizeit beschäftigt sich Alexander natürlich gerne mit seinem Computer. Außerdem interessiert er sich für das weite Feld der Elektronik.



herbewegen. In einer günstigen Position muß man auf den Feuerknopf drücken, dann wird ein Torpedo nach oben herauskatapultiert. Natürlich schauen die Gegner nicht tatenlos zu, sondern schießen ebenfalls und starten vereinzelt Angriffe. Ist der erste erfolgreich überstanden, erscheinen neue Aliens, diesmal in einer anderen Formation.

Zum Schluß sei noch auf einige Besonderheiten hingewiesen.

- Taste P aktiviert die Pausenfunktion.
- Ein neuer High score wird auf Diskette gespeichert; er läßt sich mit ERA löschen.
- Es gibt sechs verschiedene Szenen.
- Nach jeweils 3000 Punkten erhält man ein Zusatzleben.

Alexander Borst

**Programm:** Alien Attack

**Computer:** CPC 464/664/6128

**Funktion:** Weltraum-Ballerspiel

**Listings:** 3

# Ladeprogramm

```

<0423> 10 MODE 1:INK 0,0: BORDER 0: INK 1,6,15
<06D5> 20 LOCATE 15,10: PRINT "Alien Attack"
<0659> 30 LOCATE 16,12: PRINT "is loading"
<028B> 40 MEMORY &74FF
<04D1> 50 LOAD "alien.prg"
<04EB> 60 LOAD "alien.sym"
<0184> 70 CALL &7500
    
```

## ALIEN.LD1

```

<083A> 1 : 'MC-Generator: ALIEN.LD1
<004B> 2 :
<07A6> 3 : 'erzeugt : ALIEN.PRG
<004D> 4 :
<00C6B> 5 : 'Copyright : 1989,Alexander Bost
<004F> 6 :
<007B> 7 :
100 DATA 21,E8,03,22,D2,8A,11,00,87,7D,1
2,13,7C,12,21,F6,86,11,EA,86,06,EA,0,3E80
<1034> 101 DATA 1A,77,13,23,10,FA,CD,E2,7E,3E,0
1,32,CD,8A,21,9C,86,CD,BC,3E,02,099D
<1066> 102 DATA 21,A0,86,CD,BC,BC,3E,01,21,AA,8
6,CD,BF,BC,3E,02,21,A8,86,CD,BF,BC,&0B35
<1068> 103 DATA 3E,03,21,AC,86,CD,BF,BC,3E,04,2
1,B0,86,CD,BF,BC,21,F9,83,22,D9,8A,&0ADF
<103F> 104 DATA 21,00,00,22,D0,8A,CD,82,81,CD,2
7,7F,CD,67,7F,CD,8F,7D,3E,1B,CD,1E,&09B0
<1066> 105 DATA BB,C4,AA,75,CD,20,76,CD,9F,76,C
D,E,1,76,CD,0B,76,CD,00,77,CD,42,7B,&0C23
<109C> 106 DATA CD,CC,7B,CD,19,BD,3A,C9,8A,FE,0
1,CA,C6,75,3A,D5,8A,FE,28,CC,05,79,&0C51
<10C7> 107 DATA FE,46,CC,F4,75,3A,D7,8A,FE,FF,C
A,B1,75,C3,6A,75,CD,00,BB,CD,18,BB,&0DCB
<1059> 108 DATA C9,2A,D2,8A,ED,5B,D0,8A,ED,52,D
2,1F,75,2A,D0,8A,22,D2,8A,CC,12,81,&0BEE
<1095> 109 DATA 21,D0,8A,35,CD,92,75,2A,D9,8A,7
E,FE,FD,CC,E6,75,CD,27,7F,CD,AE,7F,&0D16
<1051> 110 DATA CD,D8,7E,97,32,DF,8A,C3,6A,75,2
1,F9,83,22,D9,8A,3A,DC,8A,3C,32,CD,&0B83
<106D> 111 DATA 8A,C9,0E,1E,06,38,ED,43,B9,8A,C
D,B9,7B,97,32,D5,8A,21,D7,8A,35,CD,&0ADD
<108E> 112 DATA 97,7D,C9,CD,3C,77,CD,B9,77,CD,4
B,79,CD,15,7A,CD,87,78,3E,01,32,DF,&0BC3
<1048> 113 DATA 8A,C9,3A,D5,8A,FE,00,78,21,D6,8
A,35,CD,36,04,5F,D6,0A,D2,4B,CB,7B,&0AAF
<1092> 114 DATA CD,51,76,3C,32,D5,8A,CD,51,76,C
9,E5,D5,C5,F5,CD,AA,BC,F1,C1,D1,E1,&0EC9
<1055> 115 DATA C9,7B,3C,32,D5,8A,C9,E5,D5,C5,F
5,ED,4B,B9,8A,3A,D5,8A,21,60,95,11,&0C89
<0FA1> 116 DATA 00,00,19,3D,20,FC,54,5D,CD,C2,8
0,04,04,11,20,00,19,54,5D,CD,C2,80,&0784
<1014> 117 DATA F1,C1,D1,E1,C9,21,D6,8A,35,C0,3
6,64,21,B9,87,06,13,97,BE,CA,90,76,&0BDC
<0F89> 118 DATA 23,10,E9,C9,35,01,11,14,00,19,3
6,01,11,80,90,CD,C2,80,C9,21,CF,8A,&0814
<0FDF> 119 DATA 35,C0,36,02,21,9B,87,06,03,C5,E
5,7E,FE,00,CA,CB,76,4F,11,0A,00,19,&082D
<107B> 120 DATA 46,19,7E,3D,FE,00,CA,D1,76,77,C
D,4E,7D,CD,75,7E,CD,C2,80,E1,23,C1,&0BCC
<1080> 121 DATA 10,DB,C9,E1,CD,4E,7D,CD,75,7E,C
D,C2,80,36,00,E5,C3,BC,76,C9,21,CC,&0CD1
<1036> 122 DATA 8A,35,C0,36,8C,3A,CD,8A,FE,32,8
0,06,3E,32,32,CD,8A,C9,3E,0A,32,CD,&0939
<100F> 123 DATA 8A,C9,CD,15,80,C9,21,CB,8A,35,C
0,36,04,21,69,87,06,03,C5,E5,7E,FE,&0A63
<1031> 124 DATA 00,CA,2F,77,11,10,00,4F,19,46,1
9,7E,CD,75,7E,CD,C2,80,3F,1E,C1,&08C5
<1032> 125 DATA 35,77,77,CD,75,7E,CD,C2,80,E1,2
3,C1,10,D8,C9,E1,36,00,E5,C3,2F,77,&0BCD
<100C> 126 DATA 21,C5,8A,35,C0,3E,03,77,21,B9,8
7,7E,FE,FE,CD,11,04,00,E5,19,7E,E1,&0A33
<10CD> 127 DATA FE,FE,C2,AC,77,7E,FE,00,CA,AC,7
7,E5,4E,23,46,23,7E,CD,75,7E,D5,CD,&0CEA
128 DATA C2,80,23,23,23,56,E5,25,0E,0
0,7B,B9,28,0A,2C,91,F5,DC,23,77,F1,&05A4
<106B> 129 DATA D4,B5,77,7A,B8,28,05,2C,90,D4,B
7,77,7D,E1,D1,CD,C2,80,5D,5A,E1,FE,&0CEB
<0FA5> 130 DATA 00,CC,21,77,71,97,70,62,6B,23,C
3,47,77,97,FE,23,23,23,97,77,23,77,&08E6
<0FDB> 131 DATA E1,C9,11,07,00,19,C3,47,77,0D,C
9,0C,C9,04,C9,21,C3,8A,35,C0,3E,02,&0877
<108C> 132 DATA 77,21,B9,87,7E,FE,FF,C8,11,04,0
0,E5,19,7E,E1,FE,00,CA,35,7E,FE,FF,&0BFF
<102B> 133 DATA CA,35,78,7E,FE,00,CA,35,78,4E,2
3,46,78,D6,35,74,B5,78,ES,23,23,7E,&0A4E
    
```

```

<10C5> 134 DATA CD,75,7E,CD,C2,80,78,FE,3E,CA,2
6,79,23,7E,D5,E6,80,5F,7E,CB,BF,FE,&0D2D
<0FED> 135 DATA 01,28,10,7E,02,C2,12,78,3D,B3,E
E,80,77,C3,15,78,3D,B3,77,D1,04,79,&095F
<1047> 136 DATA D6,02,DC,46,79,79,D6,3D,D4,41,7
9,7E,0D,CB,7E,20,02,0C,0C,CD,C2,80,&09B7
<1046> 137 DATA E1,70,2B,71,CD,3C,78,11,07,00,1
9,C3,C4,77,E5,D5,C5,F5,3A,D5,8A,FE,&0BA8
<1000> 138 DATA 00,52,62,78,78,D6,37,30,15,2,C
6,8A,35,CC,67,78,3A,C6,8A,FE,0F,28,&0976
<1021> 139 DATA 07,3A,B9,8A,B9,CC,67,78,F1,C1,D
1,E1,C9,36,0F,58,21,05,87,06,14,7E,&09F7
<0F9E> 140 DATA FE,00,28,04,23,10,F8,C9,0C,71,4
3,11,32,00,19,70,11,E1,83,CD,64,80,&07D0
<0FC3> 141 DATA C9,21,05,87,06,14,C5,E5,7E,FE,0
0,28,1C,11,32,00,4E,19,46,11,E1,83,&075F
<1020> 142 DATA CD,64,80,04,78,D6,37,D4,C2,78,7
8,FE,3B,28,74,70,CD,64,80,E1,23,C1,&0B7B
<109A> 143 DATA 10,D8,C9,C5,0C,0C,CD,C2,78,0
D,CD,C2,78,C1,C9,78,D6,3C,D0,D5,ED,&0C5B
<10E2> 144 DATA 5B,B9,8A,7B,B9,CC,E1,78,3C,B9,C
C,E1,78,3C,B9,C9,E1,78,3C,B9,CC,E1,&0DCD
<1082> 145 DATA 78,D1,C9,F5,3A,D5,8A,FE,00,C2,0
3,79,3E,01,32,D5,8A,C5,ED,4B,B9,8A,&0BEE
<10C5> 146 DATA CD,B9,7B,CD,51,76,E5,21,CF,86,C
D,3E,76,E1,C1,E1,C9,21,D7,8A,7E,FE,&0DCC
<104D> 147 DATA 00,C0,26,04,2E,11,CD,75,BB,3E,0
1,CD,90,BB,21,CE,83,CD,9E,82,C9,E1,&0A86
<1060> 148 DATA 36,00,E5,C3,AF,78,E1,06,01,70,2
3,7E,CD,88,79,7B,77,CD,75,7E,CD,C2,&0B5D
<1055> 149 DATA 80,23,23,36,FF,23,23,23,C3,C4,7
7,7E,CB,FE,77,C9,7E,CB,FF,77,C9,21,&0B53
<103B> 150 DATA C0,8A,35,C0,3E,0A,77,21,B9,87,7
E,FE,FF,C8,11,03,00,E5,19,7E,5F,23,&09B4
<10D8> 151 DATA 7E,57,E1,7E,FE,00,CA,CE,79,7A,F
E,00,C2,CE,79,7E,FE,00,CA,CE,79,4E,&0C9C
<1075> 152 DATA 23,46,23,13,7E,FE,0D,CA,17,79,F
E,11,CA,17,79,FE,25,CA,17,79,CD,75,&0B48
<103C> 153 DATA 7E,CD,C2,80,C3,77,CD,75,7E,CD,C
2,80,23,23,23,23,C3,56,79,23,97,CB,&0AB2
<1059> 154 DATA 45,C4,CB,79,5F,ED,5F,E6,3F,C6,0
A,B3,77,23,23,23,E5,FE,21,B4,86,78,&0B2D
<101D> 155 DATA CD,14,23,23,23,77,2B,2B,CD,3
F,76,F1,E1,C3,56,79,3E,80,C9,23,23,23,&08EE
<1034> 156 DATA 23,23,23,23,C3,56,79,FE,01,C
C,06,7A,FE,02,CC,06,7A,FE,03,CC,06,&08AB
<10F3> 157 DATA 7A,FE,04,CC,0B,7A,FE,05,CC,0B,7
A,FE,06,CC,0B,7A,FE,07,CC,10,7A,FE,&0ACF
<1052> 158 DATA 08,CC,10,7A,FE,09,CC,10,7A,C9,3
E,0A,1E,01,C9,3E,0E,1E,04,C9,3E,12,&073B
<108B> 159 DATA 1E,07,C9,21,B9,87,3A,BC,8A,16,0
0,5F,19,7E,FE,FF,CC,E0,7A,22,C1,8A,&0A6B
<106E> 160 DATA 3A,BC,8A,C6,07,32,BC,8A,7E,FE,0
0,C8,E5,23,23,7E,E1,FE,00,C2,96,&0B0C
<10AE> 161 DATA 7A,4E,E5,23,46,23,7E,CD,75,7E,C
D,C2,80,5F,CD,B3,7A,CD,9A,7A,7B,3C,&0B77
<1111> 162 DATA FE,04,CC,D7,7A,FE,07,CC,DA,7A,F
E,0A,CC,DD,7A,77,32,CA,8A,CD,75,7E,&0D2C
<10BA> 163 DATA E1,71,CD,C2,80,E5,21,C8,8A,35,C
C,8B,7A,E1,3A,BF,8A,FE,00,CC,FE,7A,&0D55
<1093> 164 DATA 3A,BF,8A,3D,CC,EE,7A,3D,BF,8A,C
9,36,14,21,C6,8A,36,01,CD,3C,78,C9,80A74
<1065> 165 DATA CD,9A,7A,C9,E5,D5,C5,F5,2A,C1,8
A,11,05,00,19,4E,23,24,46,CD,B3,7A,70,&0AE3
<1083> 166 DATA 2B,71,F1,C1,D1,E1,C9,0D,3A,AD,9
A,FE,01,20,02,0C,79,F5,FE,01,CC,&0AC9
<10BC> 167 DATA CB,7A,F1,FE,3D,CC,E1,7A,C9,3E,0
1,32,BE,8A,C9,3E,02,3E,8A,C9,3E,&0B92
<106D> 168 DATA 01,C9,3E,04,C9,3E,07,C9,21,B9,8
7,97,32,BC,8A,3A,BE,8A,32,BD,8A,C9,&0A17
<10ED> 169 DATA 3A,D5,8A,FE,00,C3,CA,8A,FE,0
7,CA,39,7B,FE,08,CA,39,7B,FE,09,CA,&0BDD
<1090> 170 DATA 39,7B,CD,C2,80,23,23,7E,CD,D8,7
9,23,77,CD,75,7E,CD,C2,80,ED,5F,E6,&0C40
<10B2> 171 DATA 0F,5F,3A,C9,8A,CD,28,7B,87,B3,3
2,BF,8A,C9,D5,87,5F,3A,DC,8A,57,7B,&0B16
<1097> 172 DATA 1E,00,92,1C,30,FC,7B,D1,C9,3A,C
9,8A,D6,0F,D0,3C,06,7B,3A,D5,8A,FE,&0B2A
<10CB> 173 DATA 00,CC,CD,24,BB,F5,CB,5F,C4,91,7
B,F1,F5,CB,57,C4,A5,7B,F1,CB,6F,F5,&05F5
<1089> 174 DATA 3A,B9,8A,FE,00,CC,64,7B,C9,97,32,B
B,8A,C9,3A,B9,8A,FE,00,CC,3E,01,22,&0B92
<1051> 175 DATA BB,8A,21,0E,07,7E,FE,00,CD,ED,4
B,B9,8A,11,D8,83,05,0C,CD,64,80,C1,&0A45
<10D0> 176 DATA 23,7D,18,86,CD,3F,76,C9,ED,4
B,B9,8A,79,FE,3D,CD,C8,C9,7B,0C,CD,&0C13
<1109> 177 DATA B9,7B,ED,43,B9,8A,ED,4B,B9,8
    
```

```

A,79,FE,01,C8,CD,B9,7B,0D,CD,B9,7B,&0D3A
<1032> 178 DATA ED,43,B9,8A,C9,C5,D5,11,00,90,C
D,C2,80,04,04,11,20,90,CD,C2,80,D1,&0B2F
<1074> 179 DATA C1,C9,21,02,87,7E,FE,90,C3,4F,2
3,46,11,6D,83,CD,64,80,CD,FA,7B,3A,&0AC9
<106B> 180 DATA C7,8A,FE,01,CA,F4,7B,78,D6,05,D
A,F4,7B,05,05,70,CD,64,80,CD,C9,21,02,&0B3C
<10BA> 181 DATA 87,36,00,ED,E5,D5,C5,F5,97,32,C
7,8A,CD,0A,7C,F1,C1,D1,E1,C9,3A,Df,&0DAD
<107E> 182 DATA 8A,FE,01,C0,21,B9,87,7E,FE,FF,C
8,7E,FE,00,28,39,5E,23,56,E5,21,00,&0AA7
<1105> 183 DATA 00,7B,B9,C0,5C,7C,3C,B9,C0,5C,7
C,3C,B9,CC,5C,7C,3C,B9,CC,5C,7C,7A,&0B1D
<10F3> 184 DATA 8B,CC,5F,7C,3D,B8,CC,5F,7C,3D,B
8,CC,5F,7C,7C,85,E1,FE,02,CA,62,7C,&0C21
<0FC2> 185 DATA 11,06,00,19,C3,13,7C,11,07,00,1
9,C3,13,7C,2E,01,C9,26,01,C9,E5,21,&05F3
<10E2> 186 DATA C6,86,CD,3F,76,E1,23,7E,CD,1D,7
E,E5,C5,2A,D0,8A,E5,CD,C3,7C,E1,44,&0CFC
<10AF> 187 DATA 4D,2A,D0,8A,ED,42,ED,4B,DD,8A,0
9,23,22,DD,8A,CD,1D,7E,C1,E1,23,23,&0AA4
<10ED> 188 DATA 7E,2B,FE,FF,CA,87,7D,7E,FE,00,C
A,87,7D,4B,42,CD,75,7E,CD,C2,80,2B,&0C45
<1065> 189 DATA 2B,2B,36,00,23,3E,01,32,C7,8A,3
A,C9,8A,3D,32,C9,8A,E5,D5,C5,F5,CD,&0A01
<110F> 190 DATA 67,7D,F1,C1,D1,E1,C9,E5,D5,F5,C
D,D8,79,7B,FE,01,CC,DD,7C,FE,04,CC,&0F4B
<1094> 191 DATA F0,7C,FE,07,CD,40,7D,F1,D1,E1,C
9,2A,D0,8A,11,0B,00,ED,5F,CB,47,20,&0B48
<0FEB> 192 DATA 02,13,13,19,22,D0,8A,C9,2A,D0,8
A,11,20,00,ED,5F,CB,47,20,03,13,13,&0E2E
<1006> 193 DATA 13,19,22,D0,8A,C9,7A,16,14,D2,1
5,7D,2A,D0,8A,11,21,00,19,22,D0,8A,&0884
<0FD2> 194 DATA C9,21,9B,87,06,03,7E,FE,00,28,0
4,23,10,F8,C9,17,42,11,0A,00,19,70,&0708
<1075> 195 DATA 19,36,29,CD,4E,7D,16,00,2A,D0,8
A,19,22,D0,8A,CD,75,7E,CD,C2,80,E5,&09F3
<1082> 196 DATA 21,D8,86,CD,3F,76,E1,E1,86,CD,3
F,76,E1,C9,78,D6,23,38,0A,78,D6,2F,&0AE5
<102E> 197 DATA 3E,8A,1E,5A,3E,29,C9,1E,28,3E,2
7,C9,1E,46,3E,28,C9,21,69,87,50,06,&0658
<0FFB> 198 DATA 03,97,BE,28,04,23,10,FA,C9,71,4
2,11,10,00,19,70,19,3E,16,77,CD,75,&06FD
<10F9> 199 DATA 7E,CD,C2,80,C9,2B,7E,23,C9,D,7
C,7E,C9,97,CD,0E,BC,CD,0E,80,CD,58,&0BF3
<0FFD> 200 DATA 7E,11,E0,93,0E,01,06,01,CD,C2,8
0,11,60,90,0E,27,06,01,CD,C2,80,CD,&0840
<108C> 201 DATA 1D,7E,CD,49,7E,CD,F7,7D,C9,21,0
4,86,7E,FE,FF,C8,E5,21,00,00,16,00,&0A43
<0FE3> 202 DATA 5F,19,19,19,44,4D,5E,23,7E,E
5,21,00,00,16,00,5F,19,19,54,5D,E1,&0615
<111E> 203 DATA 23,7E,CD,DE,BB,E5,60,69,EB,CD,1
B,7D,E1,23,C3,BA,7D,E5,D5,C5,F5,CD,&0F14
<1097> 204 DATA EA,BB,F1,C1,D1,E1,C9,0E,01,06,1
F,11,20,98,21,D7,8A,7E,FE,00,CA,16,&0AAD
<10A3> 205 DATA 7E,FE,FF,CA,16,7E,CD,99,80,0C,0
C,0C,0C,3D,20,F6,11,00,98,CD,99,80,&09D1
<10B3> 206 DATA C9,C5,E5,D5,2A,D0,8A,06,01,0E,0
7,CD,86,7E,CD,31,7E,D1,E1,C1,C9,2A,&0B9B
<10A8> 207 DATA DD,8A,11,B8,0B,ED,52,D8,01,00,0
0,ED,43,DD,8A,21,D7,8A,34,CD,F7,7D,&0AE1
<10C8> 208 DATA C9,C5,E5,2A,D0,8A,06,01,0E,2D,C
D,86,7E,E1,C1,C9,CD,B7,7D,21,89,87,&0BD9
<1093> 209 DATA 7E,FE,FF,C8,4F,23,46,2,7E,CD,7
5,7E,CD,C2,80,23,23,23,23,C3,5E,&0A3B
<1076> 210 DATA E5,FE,11,20,00,21,00,90,19,3
D,20,FC,54,5D,F1,E1,C9,E5,D5,C5,F5,&0BCC
<1076> 211 DATA 97,ED,43,CE,8A,11,10,27,CD,B2,7
E,11,E8,03,CD,B2,7E,11,64,00,CD,B2,&0A51
<1099> 212 DATA 7E,11,0A,00,CD,B2,7E,11,01,00,C
D,B2,7E,F1,C1,D1,E1,C9,44,4D,3C,ED,&0A8C
<10D5> 213 DATA 52,38,02,18,F7,C5,ED,4B,CE,8A,C
D,D3,7E,CD,C2,80,0C,0C,0C,ED,43,&0A7D
<1062> 214 DATA CE,8A,C1,60,69,97,C9,E5,21,E0,9
3,11,20,00,19,3D,20,FC,54,5D,E1,C9,&0AB9
<10AA> 215 DATA 97,CD,90,BB,21,3E,83,06,0B,11,0
0,C0,CD,77,BC,21,F6,86,CD,83,BC,CD,&0AB9
<102D> 216 DATA 7A,BC,11,00,87,1A,32,D2,8A,13,1
A,32,D3,8A,C9,21,3E,83,06,0B,11,00,&06FF
<10DF> 217 DATA C0,CD,8C,ED,5B,DD,8A,ED,53,0
0,87,21,F6,86,11,0C,00,CD,98,BC,CD,&0B00
<1103> 218 DATA 8F,BC,C9,97,32,BB,8A,32,3C,8A,3
2,BD,8A,32,BE,8A,3E,FF,32,C9,8A,3E,&0BBD
<105B> 219 DATA 0A,32,C0,8A,3E,05,32,D6,8A,3E,0
A,32,C3,8A,32,C5,8A,32,C6,8A,32,CB,&0922
<10EB> 220 DATA 8A,32,D4,8A,3E,0A,32,C8,8A,3E,0

```

```

A,32,CC,8A,3E,0A,32,CD,8A,CD,FA,7F,&09CD
<107A> 221 DATA C9,21,00,00,22,DD,8A,3E,3C,32,D
5,8A,3E,14,0E,FE,81,21,D7,8A,77,97,&0DE
<0FB4> 222 DATA 21,02,87,36,00,21,05,87,06,63,1
E,00,73,23,10,FC,21,69,87,06,32,1E,&051D
<104D> 223 DATA 00,73,23,10,FC,21,9B,87,1E,00,0
5,1D,73,23,10,FC,CD,A6,7F,C9,21,B9,&085D
<106A> 224 DATA 87,01,FF,01,1E,00,73,23,0B,78,B
1,FE,00,20,F7,3E,96,32,DB,8A,3E,C8,&08F6
<10E1> 225 DATA 32,BF,8A,97,32,C9,8A,2A,D9,8A,1
B,9,87,7E,FE,FE,CA,F5,7F,12,4F,13,&0BA1
<0FA4> 226 DATA 23,7E,12,47,13,23,7E,12,3E,00,1
3,12,97,13,12,13,23,79,12,13,12,12,&043D
<10C6> 227 DATA 13,3A,C9,8A,3C,32,C9,8A,C3,CB,7
F,23,22,D9,8A,C9,21,89,83,97,E5,F5,&0BDD
<107A> 228 DATA 46,48,CD,32,BC,1C,E1,23,C,FE,1
0,20,F1,C9,11,54,80,CD,FA,80,C9,11,&0A8A
<1051> 229 DATA 5C,80,CD,1C,80,C9,01,00,BC,1A,1
3,ED,79,01,00,BD,1A,13,ED,79,01,00,&07B0
<1081> 230 DATA BC,1A,13,ED,79,01,00,BD,1A,13,E
D,79,01,00,BC,1A,13,ED,79,01,00,&07AE
<104A> 231 DATA 1A,13,ED,79,01,00,BC,1A,ED,79,1
3,1A,01,00,ED,79,C9,01,20,02,2A,&0737
<1078> 232 DATA 06,1F,07,21,01,28,02,2E,06,19,10
7,1F,E5,D5,C5,F5,D5,21,BF,DF,CB,40,&07FE
<1045> 233 DATA 28,03,21,FF,BF,CB,28,7B,FE,00,2
8,06,11,40,00,19,10,FD,50,59,19,D1,&07AB
<106F> 234 DATA 06,08,0E,08,1A,AE,77,13,7C,81,6
7,DC,07,81,10,F4,F1,C1,D1,E1,C9,E5,&0A54
<1045> 235 DATA D5,C5,F5,D5,21,BF,BF,11,40,00,1
9,10,FD,50,59,19,D1,0E,08,06,04,E5,&0912
<10B2> 236 DATA 1A,77,23,13,10,FA,E1,7C,81,67,D
2,AD,80,F1,C1,D1,EF,C9,E5,D5,C5,F5,&0DB6
<1083> 237 DATA D5,21,BF,BF,CB,40,28,03,21,FF,B
F,CB,28,78,FE,28,06,11,40,00,19,&08AA
<1060> 238 DATA 10,FE,50,59,19,D1,06,08,48,E5,1
A,AE,77,23,13,1A,AE,77,23,13,1A,AE,&078D
239 DATA 77,13,23,1A,AE,77,13,E1,7C,81,6
7,DC,07,81,10,E3,F1,C1,D1,E1,C9,C5,&08BD
<10CB> 240 DATA 01,40,00,09,CD,FC,CA,F4,C1,C9,9
7,CD,0E,BC,CD,00,BB,CD,15,80,26,03,&0A9B
<10AF> 241 DATA 2E,03,CD,75,BB,3E,08,CD,90,BB,2
1,BD,83,CD,9E,82,26,01,2E,05,CD,75,&0976
<10C4> 242 DATA BB,3E,09,CD,90,BB,21,A8,83,CD,9
E,82,3E,01,CD,90,BB,21,FE,86,3E,20,&0AA5
<107E> 243 DATA 06,0A,77,23,10,FC,CD,B7,7D,26,0
6,2E,07,CD,75,BB,21,FE,86,06,01,CD,&0886
<10F3> 244 DATA 06,BB,5F,FE,0D,CA,7C,81,D6,20,3
8,F3,7B,77,23,CD,5A,BB,04,78,FE,0B,&0A8F
<10C5> 245 DATA CA,53,81,C3,5F,81,CD,07,7F,C3,1
F,75,06,00,48,CD,38,97,CD,0E,BC,&0A28
<1137> 246 DATA CD,B7,7D,CD,15,80,CD,A9,82,CD,9
F,81,CD,00,BB,CD,18,BB,C9,97,CD,30,&0CCD
<1091> 247 DATA 82,26,01,2E,0C,CD,75,BB,3E,03,C
D,90,BB,21,56,83,CD,9E,82,26,07,2E,&087B
<10C8> 248 DATA 0E,CD,75,BB,3E,04,CD,90,BB,21,6
B,83,CD,9E,82,26,01,2E,10,CD,75,BB,&09C3
<10C2> 249 DATA 3E,05,CD,90,BB,21,8A,83,CD,9E,8
2,26,0C,2E,10,CD,75,BB,2A,D2,8A,CD,&0A30
<10A6> 250 DATA C7,82,26,01,2E,12,CD,75,BB,3E,0
6,CD,90,BB,21,8F,83,CD,9E,82,26,06,&095A
<10A4> 251 DATA 2E,12,CD,75,BB,21,FE,86,06,0A,7
E,CD,5A,BB,23,10,F5,26,04,2E,01,CD,&05B0
<10A4> 252 DATA 75,BB,3E,07,CD,90,BB,21,7F,83,C
D,9E,82,26,05,2E,17,CD,75,BB,3E,08,&0945
<10DC> 253 DATA CD,90,BB,21,9A,83,CD,9E,82,C9,1
E,02,CD,90,BB,26,01,2E,01,CD,75,BB,&0AB7
<1082> 254 DATA 21,49,83,05,9E,82,3E,02,CD,90,B
B,0E,1E,06,02,3E,05,CD,6C,82,26,01,&078B
<1098> 255 DATA 2E,01,CD,75,BB,21,4F,83,CD,9E,8
2,3E,02,CD,90,BB,0E,50,06,02,3E,07,&080E
<0F9B> 256 DATA CD,6C,82,C9,11,01,00,87,87,7F,
F,5,C5,3E,08,21,8E,01,F5,CD,94,82,FE,&0AB1
<0F5E> 257 DATA 00,C4,01,83,04,2B,2B,F1,3D,20,F
0,C1,F1,13,13,13,13,0C,3D,20,DF,C9,&07EF
<103F> 258 DATA E5,D5,C5,CD,F0,BB,C1,D1,E1,C9,7
E,FE,5D,C8,CD,5A,BB,23,C3,9E,82,97,&0F53
259 DATA 21,2D,83,97,E5,F5,7E,FE,FF,CA,C
4,82,F1,F5,4E,41,CD,32,BC,F1,E1,C3,&0E0B
<0FCE> 260 DATA 23,C3,AE,82,F1,C9,E5,D5,C5,F
5,97,11,10,27,CD,FE,82,11,E8,03,CD,&0D0B
<0FB2> 261 DATA 82,11,64,00,CD,FE,82,11,0A,
0,CD,FE,82,11,01,00,CD,FE,FF,F1,11,&0A7F
<0FE5> 262 DATA D1,D1,C9,44,4D,3C,ED,52,38,02,1
8,F7,C6,2F,CD,5A,BB,60,69,97,C9,E5,&0BB5
<0F79> 263 DATA D5,C5,F5,D5,21,AF,BF,11,50,00,1

```

# PROGRAMM

```

9,10,FD,50,59,3E,40,CB,43,20,02,3E,&090F
<0F8C> 264 DATA 80,CB,2B,19,D1,01,00,08,F5,B6,7
7,F1,13,09,30,F8,F1,C1,D1,E1,C9,00,&0AED
<0F0C> 265 DATA 18,00,0F,06,02,0E,18,12,00,18,1
A,17,01,03,0D,FF,61,6C,69,65,6E,68,&0431
<0F52> 266 DATA 69,2E,62,69,6E,41,6C,69,65,6E,5
D,41,74,74,61,63,6B,5D,57,72,69,74,&0871
<0F22> 267 DATA 74,65,6E,20,69,6E,20,44,65,63,2
E,20,31,39,38,38,5D,62,79,20,4D,72,&06A9
<0F2B> 268 DATA 2E,20,58,5D,55,73,65,20,61,20,6
A,6F,79,73,74,69,63,6B,21,5D,48,69,&0770
<0F11> 269 DATA 73,63,6F,72,65,20,3A,5D,54,6
8,65,20,62,65,73,74,20,3A,5D,43,61,&073D
<0F48> 270 DATA 6E,20,77,65,20,73,74,61,72,74,3
F,5D,4E,6F,77,20,69,6E,73,65,72,74,&083D
<0F53> 271 DATA 20,79,6F,75,72,20,6E,61,6D,65,5
D,41,20,6E,65,77,20,48,69,73,63,6F,&07CE
<0EEB> 272 DATA 72,65,21,21,21,5D,47,41,4D,45,2
0,4F,56,45,52,5D,00,40,40,40,40,&05AA
<0E8B> 273 DATA 40,40,00,00,14,14,14,14,14,0
0,00,18,01,02,05,0B,17,03,06,0F,09,&015B
<0ECD> 274 DATA 0C,12,13,1A,0D,20,11,01,2C,15,0
1,14,15,01,0E,0D,01,08,11,01,1A,15,&015B
<0EB5> 275 DATA 03,14,09,04,2C,0D,02,14,11,02,0
E,09,06,20,05,07,08,15,03,20,0D,01,&011D
<0EAD> 276 DATA 2C,11,03,14,05,08,26,15,02,0E,1
5,01,20,09,05,1A,0D,02,26,11,03,14,&0167
<0ED4> 277 DATA 0D,02,26,09,04,0E,11,03,20,35,0
1,26,0D,03,1A,09,06,08,0D,02,1A,11,&013B
<0F7C> 278 DATA 03,FF,FE,FE,FE,1A,11,01,2C,0D,0
5,08,11,02,1A,0D,03,08,0D,05,1A,05,&04E4
<0EE1> 279 DATA 08,26,0D,03,0E,09,04,2C,15,01,0
E,11,03,14,09,06,20,0D,01,02,05,09,&012A
<0E95> 280 DATA 20,09,04,26,11,02,14,0D,02,08,1
5,03,26,09,05,20,11,03,26,05,07,0E,&0151
<0F6B> 281 DATA 0D,02,2C,11,01,14,11,03,1A,09,0
6,FF,FE,FE,FE,1A,1D,01,2C,0D,05,14,&0521
<0ECB> 282 DATA 11,02,08,0D,06,26,11,03,1A,19,0
1,14,0D,06,0E,11,02,20,15,03,0E,15,&013F
<0EA9> 283 DATA 01,26,05,07,20,11,01,20,0D,04,1
A,11,01,14,19,03,1A,09,07,26,15,03,&015A
<0F0A> 284 DATA 1A,0D,05,0E,05,08,1A,15,02,0E,0
D,06,20,19,01,26,0D,04,14,15,02,0F,&0234
<0F30> 285 DATA FE,FE,FE,2C,11,01,08,11,01,1A,1
9,01,1A,11,08,2C,0D,02,14,09,05,02,&0418
<0EA4> 286 DATA 11,02,1A,15,06,20,09,03,14,05,0
2,26,0D,03,0E,11,06,14,11,07,14,19,&0143
<0EDF> 287 DATA 02,0E,0D,04,1A,09,06,20,15,01,0
2,0D,01,1A,0D,07,20,11,06,08,0D,01,&010B
<0EE9> 288 DATA 26,11,03,1A,05,02,0E,15,02,14,0
D,09,20,0D,04,14,15,04,0E,09,03,FF,&0221
<0F41> 289 DATA FE,FE,FE,08,0D,02,2C,19,02,0E,1
9,02,26,11,03,1A,11,04,08,15,02,2C,&0435
<0F01> 290 DATA 0D,01,0E,0D,07,0E,15,03,08,1D,0
1,26,0D,08,2C,1D,01,0E,11,02,20,11,&0153
<0EC2> 291 DATA 06,2C,11,03,2C,09,07,14,15,03,0
8,11,02,1A,15,03,26,19,03,08,09,09,&0157
<0F1D> 292 DATA 2C,15,0E,08,19,01,14,11,05,26,1
5,01,20,15,01,FF,FE,FE,FE,14,11,01,&0520
<0EEE> 293 DATA 0E,15,03,20,15,01,2C,0D,01,32,0
5,07,14,09,04,26,0D,02,0E,0D,02,08,&014F
<0EAC> 294 DATA 09,05,26,09,06,20,0D,01,32,11,0
1,0E,05,09,20,11,02,08,11,03,2C,15,&0161
<0EC0> 295 DATA 03,20,09,06,32,15,03,32,09,04,0
8,05,09,1A,0D,01,0E,11,02,08,15,03,&013A
<0EE4> 296 DATA 32,0D,01,1A,15,01,08,0D,01,26,1
1,03,1A,11,03,1A,09,06,14,15,02,14,0D,0
3,2C,05,07,26,15,01,FF,FE,FE,FE,05,14,0D,0
<0F4C> 298 DATA 1C,25,01,09,59,01,2A,82,0F,8E,9
6,0A,6C,93,05,32,4E,07,81,63,0A,2C,&052D
<0F82> 299 DATA 87,07,37,5A,03,0B,8E,04,6C,9A,0
3,85,9D,07,17,AE,01,46,A0,9A,9F,A1,&06E1
<0F63> 300 DATA 0A,9F,46,08,80,56,0F,1F,9F,08,0
8,5E,0D,2F,92,07,83,29,04,91,54,05,&0577
<0F5D> 301 DATA 11,7A,04,13,81,07,1C,24,0B,9A,4
7,08,6B,3B,0D,29,85,03,10,7F,0B,97,&04ED
<0F8E> 302 DATA A2,0D,2C,47,06,08,69,03,5A,6E,0
4,99,B9,0D,9A,8C,0B,37,A3,02,1C,67,&0657
<0F55> 303 DATA 0E,07,92,02,0E,9A,0D,90,22,03,4
F,24,06,06,96,06,28,9A,07,3F,9E,0C,&0520
<0FEB> 304 DATA 17,A8,0D,8F,08,9F,0C,02,84,2
D,0E,0C,61,0C,0C,6B,0A,FF,0F,01,64,&0767
<0F5E> 305 DATA FF,0F,01,64,FD,06,01,DC,01,0A,0
1,64,01,01,01,64,FC,05,01,64,FE,02,&0690
<0EB1> 306 DATA 81,01,01,1E,00,00,0A,82,00,04,0
2,02,14,00,00,00,14,00,02,00,03,32,&0194

```

```

<0EBE> 307 DATA 00,00,0F,19,00,04,01,00,00,00,0
A,00,96,00,82,00,04,46,00,00,0C,19,&01BE
<0EAD> 308 DATA 00,84,00,04,50,00,00,0C,19,00,4
D,72,2E,20,58,20,20,20,20,20,20,&0342
<02F2> 309 DATA 00,00,&0000
<01C7> 310 DATA EOF
<003F> 311 :
<029C> 312 MEMORY &74FF
<0733> 313 z=100:=01a=&7500
<04C6> 314 PRINT"Zeile:":z;
<0230> 315 READ bs
<06DA> 316 IF bs = "EOF" GOTO 328
<0692> 317 IF MIDS(bs,1,1)=""& GOTO 323
<0646> 318 b=VAL("&"+bs)
<050D> 319 POKE a,b:PRINT";";
<070F> 320 s=s+ PEEK(a)
<0483> 321 a=a+1
<0188> 322 GOTO 315
<051C> 323 cs=VAL(b$)
<0B06> 324 IF s=cs THEN v=6 ELSE v=174
<0512> 325 PRINT CHR$(1)CHR$(v)
<076D> 326 s=0:z=z+o
<016B> 327 GOTO 314
<0218> 328 PRINT bs
<0720> 329 SAVE"ALLEN.PRG",b,&7500,&11FF
<00E9> 330 END

```

## ALIEN.LD2

```

<083B> 1 : 'MC-Generator: ALIEN.LD2
<004B> 2 :
<07B6> 3 : 'erzeugt : ALIEN.SYM
<004D> 4 :
<0C6B> 5 : 'Copyright : 1989,Alexander Borst
<004F> 6 :
<0EB4> 100 DATA 00,40,00,00,40,00,00,00,00,41,0
0,00,00,C3,82,00,00,83,82,00,41,56,&03A2
<0F3A> 101 DATA 43,00,01,B9,A9,00,00,67,22,00,2
8,33,22,28,EA,11,44,A0,A4,45,04,A0,&063A
<1000> 102 DATA 6C,6F,6E,28,A4,3C,2C,A0,6C,2F,6
E,28,A4,05,04,A0,A0,AF,AA,A0,00,40,&0874
<0EBD> 103 DATA 00,00,00,40,00,00,41,00,00,0
0,C3,82,00,00,83,82,00,41,56,43,00,&03A5
<0FA3> 104 DATA 01,B9,A9,00,00,67,22,00,2A,2A,2
A,00,2A,2A,2A,00,2A,2A,2A,3F,2A,&03F9
<0F52> 105 DATA 2A,2A,2A,2A,2A,2A,2A,2A,2A,2A,2
A,2A,2A,2A,00,00,00,00,10,10,10,00,&0242
<0F3F> 106 DATA 14,00,00,14,14,28,00,3C,00,50,F
0,00,00,F0,F0,A0,44,88,20,CC,44,00,&065C
<0EDF> 107 DATA 00,44,44,00,00,44,00,10,10,10,0
4,00,00,14,14,28,00,3C,00,50,F0,00,&02CC
<0F09> 108 DATA 00,F0,F0,A0,88,20,88,44,00,0
0,44,00,88,00,88,00,10,10,00,14,00,&057C
<0F3A> 109 DATA 00,14,14,28,00,3C,00,50,F0,00,0
0,F0,F0,A0,88,20,88,00,88,00,88,&068C
<0EF5> 110 DATA 00,44,44,00,00,15,15,00,11,00,0
0,11,11,22,00,33,00,45,CF,00,00,CF,&031D
<0F0B> 111 DATA CF,8A,05,0A,8A,0F,05,00,00,05,0
5,00,00,05,00,15,15,00,11,00,00,11,&0261
<0F7B> 112 DATA 11,22,00,31,00,45,CF,00,00,CF,C
F,8A,00,0A,8A,0A,05,00,05,00,8A,&04D4
<0F3E> 113 DATA 00,8A,00,15,15,00,11,00,00,11,1
1,22,00,33,00,45,CF,00,00,CF,CF,8A,&0478
<0EFD> 114 DATA 00,0A,8A,0A,00,0A,00,0A,00,05,0
5,00,00,41,41,00,40,00,00,40,40,40,&027E
<0EE4> 115 DATA 00,C0,00,41,C3,00,00,C3,C3,82,0
1,02,82,03,01,00,00,01,01,00,00,01,&0458
<0EEE> 116 DATA 00,41,41,00,40,00,00,40,40,80,0
0,C0,00,41,C3,00,00,C3,C3,82,00,02,&0590
<0EB6> 117 DATA 82,02,01,00,00,01,00,02,00,02,0
0,41,41,00,40,00,00,40,40,80,00,C0,&030C
<0ED7> 118 DATA 00,41,C3,00,00,C3,C3,82,00,02,8
2,02,00,02,00,02,00,01,01,00,00,00,&0398
<0F37> 119 DATA 00,00,00,10,10,10,14,28,00,3C,0
0,50,F0,00,00,F0,F0,A0,44,88,00,CC,&05F0
<0EB3> 120 DATA 44,00,00,44,00,00,00,00,00,00,0
0,00,00,00,00,00,88,00,88,00,50,&01E8
<0ED6> 121 DATA F0,00,14,78,0F,3C,00,10,10,00,0
0,00,00,00,00,00,00,00,00,00,00,00,&02C8
<0F42> 122 DATA 44,00,00,44,44,88,00,CC,00,F0,F
0,A0,00,50,F0,00,14,28,00,3C,00,14,&0668
<0F13> 123 DATA 10,00,00,00,00,44,00,00,44,4
4,00,00,44,44,88,20,CC,00,F0,F0,A0,&0558
<0EBE> 124 DATA 00,50,F0,00,14,28,00,3C,14,00,0

```

```

0,14,00,10,10,00,00,00,00,00,00,15,&0215
<0F77> 125 DATA 15,00,11,22,00,33,00,45,CF,00,0
0,CF,CF,8A,05,0A,00,0F,05,00,00,05,&03DF
<0EDB> 126 DATA 00,00,00,00,00,00,00,00,00,00,0
0,00,00,0A,00,0A,00,45,CF,00,11,67,&01A0
<0EB6> 127 DATA CF,33,00,15,15,00,00,00,00,00,0
0,00,00,00,00,00,00,05,00,00,05,&0136
<0F72> 128 DATA 05,0A,00,0F,00,CF,CF,8A,00,45,C
F,00,11,22,00,33,00,15,15,00,00,&03EA
<0F80> 129 DATA 00,00,05,00,00,05,05,00,00,05,0
5,0A,8A,0F,00,CF,CF,8A,00,45,CF,00,&03F8
<0EB7> 130 DATA 11,22,00,33,11,00,00,11,00,15,1
5,00,00,00,00,00,41,41,00,40,80,&01F4
<0EF2> 131 DATA 00,C0,00,41,C3,00,00,C3,C3,82,0
1,02,00,03,01,00,00,01,00,00,00,00,&03D4
<0EFB> 132 DATA 00,00,00,00,00,00,00,00,02,0
0,02,00,41,C3,00,40,C1,C3,C0,00,41,&03CD
<0E87> 133 DATA 41,00,00,00,00,00,00,00,00,0
0,00,00,00,01,00,00,01,01,02,00,03,&0049
<0F04> 134 DATA 00,C3,C3,82,00,41,C3,00,40,80,0
0,C0,00,41,41,00,00,00,00,01,00,&050F
<0EFF> 135 DATA 00,01,01,00,00,01,01,02,82,03,0
0,C3,C3,82,00,41,C3,00,40,80,C0,&0517
<0F9E> 136 DATA 40,00,00,40,00,41,41,00,00,3F,3
F,2A,15,3F,3F,3F,15,3F,3F,3F,15,3F,&03A2
<1000> 137 DATA 3F,3F,15,3F,3F,3F,15,3F,3F,1
5,3F,3F,00,3F,3F,2A,00,00,03,00,&039F
<0F49> 138 DATA 00,03,41,C3,00,01,E9,D4,00,C1,4
1,03,00,43,80,43,01,82,42,E9,00,43,&06C1
<0F60> 139 DATA 83,FC,00,00,56,00,02,E8,A8,4
1,81,40,54,01,C3,83,02,00,02,42,C2,&070C
<0F41> 140 DATA 41,43,83,A9,43,D6,D6,83,41,C1,4
2,02,01,02,02,41,00,43,00,02,00,02,&05F5
<0F1E> 141 DATA 03,02,01,E8,42,00,00,83,56,81,0
0,42,C3,82,00,02,E9,02,00,41,42,00,&0581
<0EEB> 142 DATA 00,00,00,00,01,41,00,00,00,0
1,00,41,40,82,A8,00,03,D6,02,00,82,&034B
<0EAB> 143 DATA C2,00,00,40,02,82,00,00,00,0
0,00,00,00,00,00,00,00,00,00,&0186
<0EA9> 144 DATA 00,41,01,00,00,00,02,80,00,61,8
2,00,00,00,41,00,00,00,00,00,&0188
<0F84> 145 DATA 00,00,3F,2A,3F,00,2A,00,2A,00,2
A,00,2A,15,3F,3F,2A,15,00,2A,00,&0261
<0F6F> 146 DATA 00,2A,2A,15,3F,2A,3F,15,00,00,0
0,00,14,78,B0,00,78,00,10,88,78,00,&03EA
<0F76> 147 DATA 30,88,78,10,44,88,78,20,44,88,6
C,00,44,88,44,CC,CC,00,00,00,00,&0684
<0EE1> 148 DATA 00,14,20,00,00,78,20,00,D8,2
0,00,00,50,20,00,00,50,20,00,50,&02F4
<0F0D> 149 DATA 20,00,F0,64,00,00,00,00,00,0
0,78,F0,00,14,A0,50,88,00,00,50,88,&0540
<0F5D> 150 DATA 00,78,F0,00,14,A0,00,14,A0,1
0,88,14,64,CC,88,00,00,00,00,78,&05AC
<0F1E> 151 DATA F0,00,14,A0,10,88,00,10,88,0
0,14,B0,00,00,10,88,14,28,10,88,&0504
<0F36> 152 DATA 00,CC,CC,00,00,00,00,14,F
0,00,00,78,30,00,14,A0,30,00,78,00,&04A0
<0F23> 153 DATA 64,00,F0,F0,30,88,00,00,30,00,0
0,10,30,88,00,00,00,00,14,78,F0,A0,&0610
<0F21> 154 DATA 14,A0,00,20,14,88,00,00,14,98,6
4,00,00,00,44,88,14,28,44,88,00,30,&0484
<0F4A> 155 DATA 64,00,00,00,00,00,3C,F0,00,1
4,A0,44,88,14,A0,00,00,14,B0,64,00,&04EC
<0F5A> 156 DATA 14,A0,44,88,14,A0,44,88,00,30,6
4,00,00,00,00,14,78,F0,88,14,A0,&064C
<0F10> 157 DATA 10,88,00,00,10,88,00,00,B0,00,0
0,50,88,00,00,10,88,00,10,88,00,&03E8
<0F51> 158 DATA 00,00,00,00,3C,F0,00,14,A0,4
4,88,14,A0,44,88,00,F0,64,00,14,A0,&0634
<0F53> 159 DATA 44,88,14,A0,44,88,00,30,98,00,0
0,00,00,00,3C,F0,00,14,A0,44,88,&05C0
<0F3F> 160 DATA 14,A0,44,88,00,B0,64,88,00,00,4
4,88,14,28,44,88,00,30,64,00,00,&0584
<0EF5> 161 DATA 00,00,82,00,C3,82,02,00,03,02,0
2,00,02,02,02,82,02,02,43,02,02,02,&02A5
<0F09> 162 DATA 03,02,43,02,00,02,03,02,00,00,0
0,00,C3,82,C3,82,03,02,03,02,00,02,&02E7
<0ECB> 163 DATA 02,02,41,02,02,02,01,00,02,02,0
1,00,43,02,01,00,03,02,00,00,00,02,02,0
0,&0F1E
<0F1E> 164 DATA C3,82,C3,82,03,02,03,02,02,02,0
2,02,43,02,02,02,00,02,02,02,C3,02,&03B0
<0EBA> 165 DATA 43,02,03,02,03,02,00,00,00,00,0
0,00,00,00,00,00,00,00,00,00,&004F
<0ECC> 166 DATA 00,00,00,00,00,00,00,00,00,0
0,00,00,14,00,00,00,78,28,00,00,14,&00C8
<0E8F> 167 DATA 00,00,00,00,00,00,00,00,00,00,0
0,00,00,00,00,00,00,00,00,00,&0000
<0E90> 168 DATA 00,00,00,00,00,00,00,00,00,0
0,00,00,00,00,00,00,00,00,00,&0000
<0F0F> 169 DATA 00,00,00,00,00,00,00,14,00,00,0
0,78,28,00,14,F0,B4,00,00,78,28,00,&030C
<0E9C> 170 DATA 00,14,00,00,00,00,00,00,00,00,0
0,00,00,00,00,00,00,00,00,00,&0014
<0E93> 171 DATA 00,00,00,00,00,00,00,00,00,00,0
0,00,00,00,00,00,00,00,00,00,&0000
<0F79> 172 DATA 00,14,00,00,78,28,00,14,B0,B
4,00,78,30,F0,28,14,B0,B4,00,00,78,&05DC
<0EBA> 173 DATA 28,00,00,14,00,00,00,00,00,0
0,00,00,00,00,00,00,00,00,00,&003C
<0EC5> 174 DATA 00,00,00,00,00,00,00,00,00,00,0
0,00,00,00,00,00,14,00,00,00,78,&008C
<0FC5> 175 DATA 28,00,14,B0,B4,00,78,24,F0,28,B
0,0C,18,A0,78,24,F0,28,14,B0,B4,00,&07F4
<0ECC> 176 DATA 00,78,28,00,14,00,00,00,00,0
0,00,00,00,00,00,00,00,00,00,&00B4
<0EFB> 177 DATA 00,00,00,00,00,00,00,00,00,0
0,14,00,00,00,78,28,00,14,B0,B4,00,&022C
<0FEC> 178 DATA 78,24,F0,28,B0,0C,18,A0,24,0C,0
C,20,F0,0C,58,A0,78,24,F0,28,14,B0,&07F0
<0EDE> 179 DATA B4,00,00,78,28,00,14,00,00,00,0
0,00,00,00,00,00,00,00,00,00,&0168
<0F78> 180 DATA 00,00,00,00,14,00,00,00,78,2
8,00,14,E4,B4,00,78,8C,D8,28,E4,0C,&0554
<1022> 181 DATA 4C,A0,8C,08,0C,88,0C,00,04,08,8
C,08,0C,88,E4,0C,4C,A0,78,8C,D8,28,&0734
<0F02> 182 DATA 14,E4,B4,00,00,78,28,00,00,14,0
0,00,00,00,00,00,00,00,00,00,&0274
<0FE6> 183 DATA 00,00,00,78,28,00,14,E4,B4,00,7
8,8C,D8,28,E4,0C,4C,A0,8C,08,0C,88,&0754
<0FC2> 184 DATA 0C,00,04,08,0C,00,08,0C,00,00,0
4,08,8C,08,0C,88,E4,0C,4C,A0,78,8C,&0448
<0F60> 185 DATA D8,28,14,E4,B4,00,00,78,28,00,0
0,14,14,00,00,00,00,00,00,E4,A0,00,&04E4
<0F80> 186 DATA 50,8C,D8,00,E4,08,4C,A0,8C,00,0
4,88,08,00,00,08,00,00,00,00,00,&04B4
<0EED> 187 DATA 00,00,00,00,00,00,00,00,00,00,0
0,00,00,08,00,00,08,0C,00,04,88,&0128
<0F9B> 188 DATA E4,08,4C,A0,50,8C,D8,00,00,E4,A
0,00,00,00,00,00,00,00,8C,88,00,44,08,&0670
<0F07> 189 DATA 4C,00,8C,00,04,88,08,00,00,00,0
0,00,00,00,00,00,00,00,00,00,&0174
<0EED> 190 DATA 00,00,00,00,00,00,00,00,00,00,0
0,00,00,00,00,00,08,00,08,8C,00,&009C
<0F1A> 191 DATA 04,88,44,08,4C,00,8C,88,00,00,0
0,00,00,00,00,00,00,00,00,00,&0238
<0EA8> 192 DATA 00,00,00,00,00,00,00,00,00,00,0
0,00,00,00,00,00,00,00,00,00,&0000
<0EA9> 193 DATA 00,00,00,00,00,00,00,00,00,00,0
0,00,00,00,00,00,00,00,00,00,&0000
<0EC0> 194 DATA 00,00,00,00,00,00,00,00,00,00,0
0,00,00,80,00,00,00,02,00,00,01,&0083
<0FA1> 195 DATA 23,00,00,11,B0,00,00,28,22,28,0
0,B5,CF,A0,00,B4,3C,A0,00,A0,22,A0,&0607
<0254> 196 DATA EOF
<00CC> 197 :
<0344> 198 MEMORY &8FFF

<07DB> 199 z=100:o=1:a=&9000
<0553> 200 PRINT"Zeile:"z;
<02BD> 201 READ bs
<07F4> 202 IF bs = "EOF" GOTO 214
<07AC> 203 IF MID$(bs,1,1) = "&" GOTO 209
<06D3> 204 b=VAL("&" + bs)
<059A> 205 POKE a,b:PRINT". ";
<079C> 206 s=s+PEEK(a)
<0510> 207 a=a+1
<02A2> 208 GOTO 201
<05A9> 209 cs=VAL(bs)
<0BED> 210 IF s=cs THEN v=6 ELSE v=174
<059F> 211 PRINT CHR$(1)CHR$(v)
<07FA> 212 s=s+z+z+o
<0285> 213 GOTO 200
<02A5> 214 PRINT bs
<0717> 215 SAVE"ALIEN.SYM",b,&9000,&840
<0176> 216 END

```