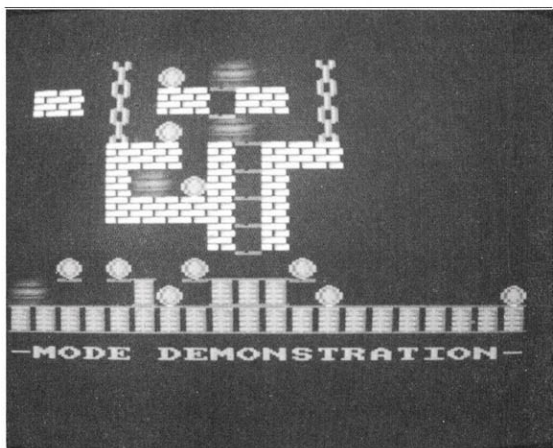
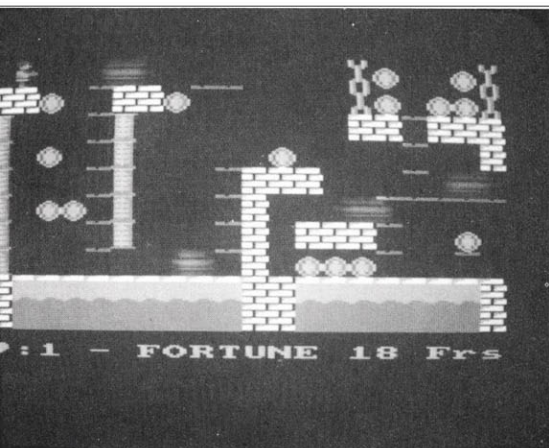




OXYDA

Stéphane VALLOIS

Dure mission que celle d'aujourd'hui : récolter 51 pièces d'or dans un entrepôt gardé par des sentinelles. Vous êtes déguisé de façon à passer inaperçu. Mais si vous touchez un garde, celui-ci vous démasque et vous perdez une vie. Attention, vous n'avez droit qu'à cinq erreurs !



Oxyda est un jeu entièrement écrit en assembleur ce qui lui procure une rapidité inégalable. la partie se joue en 4 tableaux de difficulté croissante. Il est possible d'utiliser le clavier ou le joystick pour le déplacement du personnage.

De l'action, de la couleur, et de la musique que demander de plus ?

Le mode d'emploi et inclus dans le programme.

N.B. : ce jeu ayant été réalisé sur 464, l'affichage des scores sur 464 et 6128 présente quelques anomalies, mais cela ne gêne en rien la bonne marche du programme.

```

1000 '-----
1010 '*** PROGRAMME : O.X.Y.D.A. ***
1020 '-----
1030 '
1040 '=== COPYRIGHT 1987
1050 '=== REALISE PAR STEPHANE VALLOIS.
1060 '
1070 MODE 2:MEMORY 35000:a=35390:l=1080:
z=267:RESTORE:FOR i=41200 TO 42000:POKE
i,0:NEXT
1080 t=0:FOR i=0 TO 20:READ a$:POKE a,VA
L("&"a$):t=t+VAL("&"a$):a=a+1:NEXT i:L
=L+10:READ a$:IF t<>VAL("&"a$) THEN PRI
NT CHR$(7)"ERREUR en ligne"1:END:ELSE IF
a<41000 THEN z=z-1:LOCATE 1,1:PRINT "IN
ITIALISATION - Temps restant : "z:GOTO 10
80
    
```

1090 DATA 3E,05,32,04,8F,AF,32,05,8F,32,
C4,8F,32,59,90,21,B4,96,11,8C,91,07B6
1100 DATA 01,14,00,ED,B0,21,64,96,11,08,
A0,01,50,00,ED,B0,21,C8,96,11,08,07EC
1110 DATA 99,01,20,03,ED,B0,21,08,A0,11,
09,90,01,50,00,ED,B0,21,40,9C,22,06DA
1120 DATA 5A,90,AF,CD,0E,BC,3E,15,32,85,
B2,CD,7F,91,DD,21,40,9C,17,8F,0A16
1130 DATA 3E,01,32,03,8F,AF,32,FF,8E,32,
00,8F,32,FE,8E,CD,F1,8E,CD,E0,8E,0A77
1140 DATA CD,E0,91,01,08,00,11,70,00,DD,
21,08,9D,CD,E0,91,01,28,00,11,00,06E3
1150 DATA 00,DD,21,08,9D,CD,E0,91,01,24,
00,11,70,00,DD,21,08,9D,CD,E0,91,0868
1160 DATA 01,24,00,11,20,00,DD,21,08,9D,
CD,E0,91,CD,A6,8C,3A,05,8F,FE,00,0802
1170 DATA C4,81,95,3A,59,90,FE,12,20,EE,
21,08,A0,11,09,90,01,50,00,ED,B0,087C
1180 DATA AF,CD,0E,BC,21,B0,9A,22,5A,90,
3E,00,32,FE,8E,3E,15,32,85,B2,CD,0942
1190 DATA 7F,91,DD,21,B0,9A,CD,17,8F,3E,
01,32,03,8F,AF,32,FF,8E,32,00,8F,08FD
1200 DATA 21,31,90,11,09,90,01,14,00,ED,
B0,CD,F1,8E,CD,E0,8E,CD,E0,91,01,0A04
1210 DATA 14,00,11,70,00,DD,21,08,9D,CD,
E0,91,01,10,00,11,00,00,DD,21,08,059E
1220 DATA 9D,CD,E0,91,01,3C,00,11,40,00,
DD,21,08,9D,CD,E0,91,01,34,00,11,0790
1230 DATA 50,00,DD,21,08,9D,CD,E0,91,CD,
A6,8C,3A,05,8F,FE,00,C4,8F,95,3A,0A1E
1240 DATA 59,90,FE,21,20,EE,21,08,A0,11,
09,90,01,50,00,ED,B0,AF,CD,0E,BC,08BD
1250 DATA 21,08,99,22,5A,90,3E,01,32,FE,
9E,3E,15,32,85,B2,CD,7F,91,DD,21,0942
1260 DATA E8,99,CD,17,8F,3E,01,32,03,8F,
3E,04,32,FF,8E,AF,32,00,8F,21,45,07CE
1270 DATA 90,11,09,90,01,14,00,ED,B0,CD,
F1,8E,CD,E0,8E,CD,E0,91,01,20,00,09D2
1280 DATA 11,00,00,DD,21,08,9D,CD,E0,91,
01,20,00,11,20,00,DD,21,08,9D,CD,06B4
1290 DATA E0,91,01,14,00,11,40,00,DD,21,
08,9D,CD,E0,91,01,00,00,11,80,00,064A
1300 DATA DD,21,08,9D,CD,E0,91,CD,A6,8C,
3A,05,8F,FE,00,C4,AB,95,3A,59,90,0AD3
1310 DATA FE,2B,20,EE,21,08,A0,11,09,90,
01,50,00,ED,B0,AF,CD,0E,BC,21,78,0877
1320 DATA 98,22,5A,90,3E,06,32,FE,8E,3E,
15,32,85,B2,CD,7F,91,DD,21,78,98,0953
1330 DATA CD,17,8F,3E,01,32,03,8F,3E,18,
32,FF,8E,AF,32,00,8F,21,1D,90,11,06DA
1340 DATA 09,90,01,14,00,ED,B0,CD,F1,8E,
CD,E0,8E,CD,E0,91,01,14,00,11,20,0956
1350 DATA 00,DD,21,08,9D,CD,E0,91,01,24,
00,11,20,00,DD,21,08,9D,CD,E0,91,0818
1360 DATA 01,3C,00,11,20,00,DD,21,08,9D,
CD,E0,91,01,44,00,11,80,00,DD,21,0623
1370 DATA 08,9D,CD,E0,91,CD,A6,8C,3A,05,
8F,FE,00,C4,9D,95,3A,59,90,FE,33,0AF8

1380 DATA 20,EE,C9,48,4B,4A,4F,3A,FE,8E,
CD,0F,8F,7E,FE,4C,20,3C,3E,5A,77,0967
1390 DATA CD,F1,8E,DD,21,C8,9F,CD,E0,91,
21,A8,8F,CD,AA,BC,DD,21,59,90,DD,0D3E
1400 DATA 34,00,DD,21,9A,91,DD,7E,01,FE,
39,20,0A,3E,30,DD,77,01,DD,34,00,07EE
1410 DATA 18,03,DD,34,01,2E,15,26,0E,22,
85,B2,CD,B6,91,3A,FE,8E,C6,14,CD,087E
1420 DATA 0F,8F,7E,FE,5A,28,08,FE,4C,28,
07,FE,4B,28,03,C3,0A,8D,3E,04,C3,07F3
1430 DATA C1,8D,3A,A2,8C,CD,1E,BB,CA,3A,
8D,3A,00,8F,FE,00,CA,3A,8D,3A,FE,0A7D
1440 DATA 8E,D6,14,CD,0F,8F,7E,FE,4B,28,
0D,FE,5A,28,09,FE,4C,28,05,FE,47,0924
1450 DATA CD,2A,3A,8D,3E,03,C3,C1,8D,3A,A3,
8C,CD,1E,BB,CA,7B,8D,3A,FF,8E,FE,08B1
1460 DATA 4C,CA,7B,8D,3A,FE,8E,3C,CD,0F,
8F,7E,FE,45,28,24,FE,46,28,20,3A,095E
1470 DATA 03,8F,FE,01,28,14,CD,F1,8E,DD,
21,88,9D,CD,E0,91,CD,F1,8E,DD,21,08C4
1480 DATA 08,9D,CD,E0,91,3E,01,C3,C1,8D,
3A,A4,8C,CD,1E,BB,CA,8E,8D,3A,FF,0891
1490 DATA 8E,FE,00,CA,8E,8D,3A,FE,8E,3D,
CD,0F,8F,7E,FE,45,CA,8E,8D,FE,46,0C29
1500 DATA CA,8E,8D,3A,03,8F,FE,02,28,14,
CD,F1,8E,DD,21,08,9D,CD,E0,91,CD,0B17
1510 DATA F1,8E,DD,21,88,9D,CD,E0,91,3E,
02,C3,C1,8D,CD,5C,90,FE,01,CA,40,08F3
1520 DATA 8E,FE,02,CA,90,8E,FE,03,CA,09,
8E,FE,04,CA,8D,8D,C3,06,8F,06,08,0A6F
1530 DATA C5,CD,F1,8E,CD,E0,8E,CD,19,BD,
CD,E0,91,3A,00,8F,3C,32,00,8F,082F
1540 DATA CD,0F,8E,CD,E0,8E,CD,E0,91,CD,
9C,90,C1,10,DC,3A,FE,8E,C6,14,32,0D3D
1550 DATA FE,8E,C3,D5,8D,21,9F,8F,CD,AA,
BC,06,08,C5,CD,F1,8E,CD,E0,8E,CD,0D5A
1560 DATA 19,BD,CD,E0,91,3A,00,8F,3D,3D,
32,00,8F,CD,F1,8E,CD,E0,8E,CD,E0,084C
1570 DATA 91,CD,9C,90,C1,10,DC,3A,FE,8E,
D6,14,32,FE,8E,C3,D5,8D,06,04,C5,0899
1580 DATA CD,F1,8E,DD,21,08,9D,CD,19,BD,
CD,E0,91,CD,F1,8E,DD,21,48,9D,CD,0CCC
1590 DATA E0,91,CD,9C,90,CD,F1,8E,DD,21,
48,9D,CD,19,BD,CD,E0,91,3A,FF,8E,0D41
1600 DATA 3C,32,FF,8E,CD,F1,8E,DD,21,08,
9D,CD,E0,91,CD,9C,90,C1,10,C1,3A,08ED
1610 DATA FE,8E,3C,32,FE,8E,3E,01,32,03,
8F,C3,D5,8D,06,04,C5,CD,F1,8E,DD,0AA6
1620 DATA 21,88,9D,CD,19,BD,CD,E0,91,CD,
F1,8E,DD,21,C8,9D,CD,E0,91,CD,9C,0D7D
1630 DATA 90,CD,F1,8E,DD,21,C8,9D,CD,19,
BD,CD,E0,91,3A,FF,8E,3D,32,FF,8E,0CE3
1640 DATA CD,F1,8E,DD,21,88,9D,CD,E0,91,
CD,9C,90,C1,10,C1,3A,FE,8E,3D,32,0C6D
1650 DATA FE,8E,3E,02,32,03,8F,C3,D5,8D,
3A,03,8F,FE,01,20,05,DD,21,08,9D,0848
1660 DATA C9,DD,21,88,9D,C9,3A,FF,8E,06,
00,4F,3A,00,8F,16,00,5F,C9,01,04,07DD

2830 DATA 4B,5A,5A,5A,5A,5A,47,5A,47,5A,
5A,47,5A,5A,4B,5A,45,5A,5A,5A,46,06E2
2840 DATA 48,48,48,48,48,48,48,48,48,48,
48,48,48,46,5A,45,5A,5A,5A,46,49,062A
2850 DATA 49,49,49,49,49,49,49,49,49,49,
49,49,46,5A,45,45,5A,5A,46,46,46,061C
2860 DATA 46,46,46,46,46,46,46,46,46,46,
46,46,5A,45,45,45,5A,5A,5A,5A,0633
2870 DATA 5A,5A,5A,5A,5A,5A,46,5A,4C,5A,
5A,5A,45,45,45,5A,5A,5A,5A,5A,0701
2880 DATA 5A,5A,5A,5A,5A,46,47,46,5A,46,
46,45,45,45,45,4C,5A,5A,5A,5A,069D
2890 DATA 5A,5A,5A,5A,5A,47,5A,5A,5A,5A,
46,46,46,46,46,46,46,46,46,46,0673
2900 DATA 46,46,46,46,46,46,46,46,46,46,4B,
5A,5A,4B,5A,5A,5A,4C,5A,5A,5A,5A,0682
2910 DATA 4C,5A,4C,4C,5A,5A,5A,4C,4B,5A,
5A,4B,46,46,47,46,47,46,46,46,46,065A
2920 DATA 4C,46,46,46,47,46,46,4B,5A,5A,
4B,4C,5A,47,5A,47,5A,4C,5A,5A,5A,067D
2930 DATA 5A,5A,5A,47,4C,5A,4B,5A,5A,4B,
46,46,46,47,46,46,46,5A,5A,47,47,0672
2940 DATA 47,46,46,46,5A,4B,5A,4C,4B,5A,
5A,5A,47,46,5A,5A,5A,5A,5A,47,06AD
2950 DATA 5A,5A,5A,5A,46,46,46,46,4C,4C,
4C,47,46,5A,4C,46,46,5A,5A,45,5A,0676
2960 DATA 5A,5A,5A,5A,5A,5A,5A,47,47,47,
47,5A,5A,46,5A,5A,4C,45,45,45,5A,0685
2970 DATA 5A,5A,5A,4C,5A,5A,5A,47,5A,5A,
5A,5A,5A,4C,47,47,47,47,47,5A,06C1
2980 DATA 4C,46,46,46,46,48,48,48,48,48,
48,48,48,46,46,46,46,46,46,46,05D4
2990 DATA 46,46,46,46,46,49,49,49,49,49,
49,49,46,46,46,46,46,46,46,46,5A,05EA
3000 DATA 5A,5A,5A,4B,5A,5A,5A,5A,5A,5A,
5A,4B,5A,5A,5A,5A,5A,5A,5A,5A,46,0730
3010 DATA 46,5A,4B,5A,46,46,47,46,46,5A,
4B,5A,5A,5A,5A,5A,5A,5A,5A,5A,06CD
3020 DATA 5A,4B,5A,5A,5A,47,5A,5A,5A,4B,
5A,5A,5A,5A,5A,5A,5A,5A,5A,5A,0731
3030 DATA 46,46,46,5A,46,47,46,46,46,5A,
5A,5A,5A,5A,5A,5A,5A,5A,5A,5A,46,06AF
3040 DATA 5A,5A,5A,46,47,46,5A,5A,5A,5A,
5A,5A,5A,5A,5A,5A,5A,5A,46,46,06FF
3050 DATA 46,46,46,47,46,5A,5A,5A,5A,5A,
5A,5A,5A,5A,5A,5A,5A,5A,5A,5A,06FF
3060 DATA 5A,46,47,46,5A,5A,5A,5A,5A,5A,
5A,5A,5A,5A,5A,5A,5A,5A,5A,5A,0727
3070 DATA 5A,47,5A,5A,5A,5A,5A,5A,5A,5A,
5A,5A,5A,5A,47,5A,47,45,5A,47,45,06EC
3080 DATA 45,45,47,5A,5A,5A,5A,5A,5A,5A,
5A,45,45,45,45,45,45,45,45,45,45,0653
3090 DATA 45,45,45,45,45,45,45,45,45,45,
5A,5A,5A,5A,5A,5A,5A,5A,5A,5A,0690
3100 DATA 5A,5A,5A,4B,5A,5A,5A,5A,4B,46,
46,5A,5A,47,46,46,5A,47,47,5A,5A,06BB
3110 DATA 5A,4A,4B,5A,5A,5A,5A,4B,45,5A,
5A,5A,47,45,5A,5A,5A,5A,5A,5A,0707

3120 DATA 5A,46,46,47,46,46,46,45,5A,5A,
5A,47,45,5A,5A,5A,5A,5A,5A,5A,06AE
3130 DATA 5A,5A,47,5A,5A,46,45,5A,5A,5A,
47,45,5A,5A,5A,47,46,46,46,5A,5A,06AF
3140 DATA 5A,47,5A,5A,5A,45,5A,5A,5A,47,
45,5A,5A,5A,47,46,5A,5A,5A,5A,47,06D8
3150 DATA 47,47,47,47,45,5A,5A,5A,47,45,
5A,5A,5A,47,46,5A,46,46,47,5A,0663
3160 DATA 5A,5A,5A,45,5A,5A,5A,47,5A,5A,
5A,5A,47,46,5A,5A,5A,5A,47,5A,5A,0700
3170 DATA 47,5A,46,48,48,48,48,48,48,48,
48,48,46,46,48,48,48,48,48,48,05F3
3180 DATA 46,46,49,49,49,49,49,49,49,49,
49,46,46,49,49,49,49,49,49,49,46,05EE
3190 DATA 5A,5A,5A,5A,4B,5A,5A,5A,5A,5A,
5A,5A,4C,5A,5A,4C,4C,4C,4B,5A,5A,070C
3200 DATA 5A,5A,5A,4B,5A,47,5A,5A,5A,5A,
5A,4C,5A,4C,47,47,47,4B,5A,5A,5A,06DC
3210 DATA 5A,5A,4B,5A,5A,5A,5A,5A,47,5A,
47,5A,5A,47,5A,5A,4B,5A,45,5A,5A,06F6
3220 DATA 5A,46,48,48,48,48,48,48,48,48,
48,48,48,48,48,46,5A,45,5A,5A,063B
3230 DATA 46,49,49,49,49,49,49,49,49,49,
49,49,49,49,46,5A,45,45,5A,5A,46,061F
3240 DATA 46,46,46,46,46,46,46,46,46,46,
46,46,46,46,5A,45,45,45,5A,5A,5A,060B
3250 DATA 5A,5A,5A,5A,5A,5A,5A,5A,46,5A,
4C,5A,5A,5A,45,45,45,5A,5A,5A,5A,0701
3260 DATA 5A,5A,5A,5A,5A,5A,5A,46,47,46,
5A,46,46,45,45,45,45,4C,5A,5A,5A,069D
3270 DATA 5A,5A,5A,5A,5A,5A,5A,47,5A,5A,
5A,5A,46,46,46,46,46,46,46,46,069B
3280 DATA 46,46,46,46,46,46,46,46,46,46,
46,4B,5A,5A,4B,5A,5A,5A,5A,5A,5A,0668
3290 DATA 5A,5A,5A,5A,5A,5A,5A,5A,5A,5A,
4B,5A,5A,4B,46,46,47,46,47,46,46,06BA
3300 DATA 46,46,5A,46,46,46,47,46,46,4B,
5A,5A,4B,5A,5A,47,5A,47,5A,5A,5A,067F
3310 DATA 5A,5A,5A,5A,47,5A,47,5A,5A,4B,5A,
5A,4B,46,46,46,47,46,46,46,5A,5A,06A6
3320 DATA 47,47,47,46,46,46,5A,4B,5A,5A,
4B,5A,5A,47,46,5A,5A,5A,5A,5A,5A,06A8
3330 DATA 5A,47,5A,5A,5A,5A,46,46,46,46,
5A,5A,5A,47,46,5A,5A,46,46,5A,5A,06B0
3340 DATA 45,5A,5A,5A,5A,5A,5A,5A,5A,47,
47,47,47,5A,46,5A,5A,45,45,06C3
3350 DATA 45,5A,5A,5A,5A,5A,5A,5A,47,
5A,5A,5A,5A,5A,5A,47,47,47,47,47,06DB
3360 DATA 47,5A,5A,46,46,46,46,48,48,
48,48,48,48,48,46,46,46,46,46,46,05F7
3370 DATA 46,46,46,46,46,46,49,49,49,49,
49,49,49,49,46,46,46,46,46,46,46,05D6
3380 DATA 46,44,CC,00,00,CC,CC,88,00,CC,
C9,00,00,CC,C3,82,00,41,C3,00,00,0820
3390 DATA 44,88,00,00,F0,CC,55,00,F0,F5,
FF,AA,FA,F0,FF,AA,FF,F0,00,00,CC,0CB9
3400 DATA CC,00,00,FF,F0,F0,00,00,44,88,00,
00,44,88,00,00,55,AA,00,00,55,FF,0697

2250 DATA 08,00,11,70,00,DD,21,08,9D,CD,
 E0,91,01,28,00,11,00,00,DD,21,08,05AA
 2260 DATA 9D,CD,E0,91,01,24,00,11,70,00,
 DD,21,08,9D,CD,E0,91,01,24,00,11,0798
 2270 DATA 20,00,DD,21,08,9D,CD,E0,91,21,
 B8,01,E5,CD,19,BD,CD,9C,90,E1,2B,0A68
 2280 DATA 7D,B4,20,F3,AF,32,C4,8F,AF,CD,
 0E,BC,21,B0,9A,22,5A,90,3E,00,32,09A5
 2290 DATA FE,8E,3E,15,32,85,B2,CD,C3,91,
 DD,21,B0,9A,CD,17,8F,3E,01,32,03,0998
 2300 DATA 8F,AF,32,FF,8E,32,00,8F,21,31,
 90,11,09,90,01,14,00,ED,B0,01,14,0711
 2310 DATA 00,11,70,00,DD,21,08,9D,CD,E0,
 91,01,10,00,11,00,00,DD,21,08,9D,0627
 2320 DATA CD,E0,91,01,3C,00,11,40,00,DD,
 21,08,9D,CD,E0,91,01,34,00,11,50,0743
 2330 DATA 00,DD,21,08,9D,CD,E0,91,21,B8,
 01,E5,CD,19,BD,CD,9C,90,E1,2B,7D,0AC5
 2340 DATA B4,20,F3,AF,32,C4,8F,AF,CD,0E,
 BC,21,E8,99,22,5A,90,3E,01,32,FE,0A5E
 2350 DATA 8E,3E,15,32,85,B2,CD,C3,91,DD,
 21,E8,99,CD,17,8F,3E,01,32,03,8F,0960
 2360 DATA 3E,04,32,FF,8E,AF,32,00,8F,21,
 45,90,11,09,90,01,14,00,ED,B0,01,06C4
 2370 DATA 20,00,11,00,00,DD,21,08,9D,CD,
 E0,91,01,20,00,11,20,00,DD,21,08,056A
 2380 DATA 9D,CD,E0,91,01,14,00,11,40,00,
 DD,21,08,9D,CD,E0,91,01,00,00,11,0734
 2390 DATA 80,00,DD,21,08,9D,CD,E0,91,21,
 B8,01,E5,CD,19,BD,CD,9C,90,E1,2B,0AC8
 2400 DATA 7D,B4,20,F3,AF,32,C4,8F,AF,CD,
 0E,BC,21,78,9B,22,5A,90,3E,06,32,0974
 2410 DATA FE,8E,3E,15,32,85,B2,CD,C3,91,
 DD,21,78,9B,CD,17,8F,3E,01,32,03,0961
 2420 DATA 8F,3E,18,32,FF,8E,AF,32,00,8F,
 21,1D,90,11,09,90,01,14,00,ED,B0,073E
 2430 DATA 01,14,00,11,20,00,DD,21,08,9D,
 CD,E0,91,01,24,00,11,20,00,DD,21,057B
 2440 DATA 08,9D,CD,E0,91,01,3C,00,11,20,
 00,DD,21,08,9D,CD,E0,91,01,44,00,0777
 2450 DATA 11,80,00,DD,21,08,9D,CD,E0,91,
 21,B8,01,E5,CD,19,BD,CD,9C,90,E1,0AAE
 2460 DATA 2B,7D,B4,20,F3,C9,AF,32,05,8F,
 C1,3A,04,8F,FE,00,C2,6E,8A,C9,AF,0A6B
 2470 DATA 32,05,8F,C1,3A,04,8F,FE,00,C2,
 F0,8A,C9,AF,32,05,8F,C1,3A,04,8F,095A
 2480 DATA FE,00,C2,10,8C,C9,AF,32,05,8F,
 C1,3A,04,8F,FE,00,C2,7F,8B,C9,AF,0A6A
 2490 DATA CD,0E,BC,21,05,96,7E,FE,FF,C8,
 06,00,4F,23,7E,32,04,96,11,00,00,0769
 2500 DATA CD,F6,95,CD,09,BB,DB,13,13,13,
 13,3A,04,96,BB,28,13,1B,1B,1B,0743
 2510 DATA CD,19,BD,CD,F6,95,13,13,13,13,
 CD,F6,95,18,E3,23,18,CA,DD,21,48,09E5
 2520 DATA 9E,C5,D5,E5,CD,E0,91,E1,D1,C1,
 C9,00,00,70,00,60,00,50,04,80,04,0A3F
 2530 DATA 40,00,80,00,80,40,0C,70,0C,60,0C,
 50,14,80,14,70,14,50,14,40,18,60,049C

2540 DATA 1C,80,1C,70,1C,50,1C,40,24,50,
 24,40,28,80,28,70,28,60,2C,50,2C,0538
 2550 DATA 40,34,80,34,70,34,60,34,50,34,
 40,38,80,38,40,3C,70,3C,60,3C,50,0628
 2560 DATA 44,80,44,70,44,60,44,50,48,60,
 48,40,4C,80,4C,70,4C,60,4C,50,FF,07AF
 2570 DATA FF,00,01,08,70,04,1C,01,28,00,
 10,2C,01,24,70,20,2C,01,24,20,14,0337
 2580 DATA 28,01,14,20,14,20,01,24,20,24,
 38,01,44,80,44,4C,01,3C,20,3C,44,0364
 2590 DATA 01,3C,40,3C,4C,01,10,00,10,24,
 01,14,70,14,20,01,34,50,34,3C,01,02F9
 2600 DATA 14,40,14,1C,01,20,20,20,2C,01,
 00,80,00,10,01,20,00,20,28,E4,3A,0329
 2610 DATA 35,20,2D,20,46,4F,52,54,55,4E,
 45,20,30,30,20,46,72,73,5A,5A,059E
 2620 DATA 5A,4B,5A,4C,5A,5A,5A,5A,4B,
 5A,5A,5A,5A,5A,5A,5A,46,46,5A,070E
 2630 DATA 4B,5A,46,46,47,46,46,5A,4B,5A,
 5A,5A,5A,5A,5A,5A,5A,5A,5A,4B,06D2
 2640 DATA 5A,4C,5A,47,5A,5A,5A,4B,5A,5A,
 5A,5A,5A,5A,5A,5A,5A,46,46,070A
 2650 DATA 46,5A,46,47,46,46,46,5A,5A,5A,
 5A,5A,5A,5A,5A,5A,5A,46,5A,5A,06D7
 2660 DATA 4C,46,47,46,5A,5A,5A,5A,5A,5A,
 5A,5A,5A,5A,5A,5A,5A,46,46,06C9
 2670 DATA 46,47,46,5A,5A,5A,5A,5A,5A,5A,
 5A,5A,5A,5A,5A,5A,5A,5A,5A,46,0713
 2680 DATA 47,46,5A,5A,5A,5A,5A,5A,5A,
 5A,5A,5A,4C,5A,4C,5A,5A,4C,5A,47,06FE
 2690 DATA 5A,4C,5A,5A,5A,5A,5A,5A,5A,
 5A,5A,47,5A,47,45,4C,47,45,45,45,06B9
 2700 DATA 47,4C,5A,5A,5A,5A,5A,5A,4C,45,
 45,45,45,45,45,45,45,45,45,45,0637
 2710 DATA 45,45,45,45,45,45,45,45,5A,5A,
 5A,5A,5A,5A,5A,5A,5A,5A,5A,06BA
 2720 DATA 5A,4B,4C,5A,5A,4C,4B,46,46,4C,
 5A,47,46,46,4C,47,47,5A,5A,5A,5A,0683
 2730 DATA 4B,4C,5A,4C,4C,4B,45,5A,5A,5A,
 47,45,5A,5A,5A,5A,5A,5A,5A,46,06C9
 2740 DATA 46,47,46,46,46,45,5A,4C,5A,47,
 45,5A,5A,5A,5A,5A,4C,5A,5A,5A,06A6
 2750 DATA 47,5A,5A,46,45,5A,5A,5A,47,45,
 5A,5A,5A,47,46,46,46,5A,5A,5A,47,069C
 2760 DATA 5A,5A,5A,45,5A,4C,4C,47,45,5A,
 5A,5A,47,46,5A,5A,5A,5A,47,47,06A9
 2770 DATA 47,47,45,5A,5A,5A,47,45,5A,5A,
 5A,47,46,5A,46,46,46,47,5A,5A,4C,067B
 2780 DATA 5A,45,5A,5A,5A,47,5A,5A,5A,5A,
 47,46,5A,4C,4C,4C,47,5A,5A,47,5A,06C3
 2790 DATA 46,48,48,48,48,48,48,48,48,48,
 46,46,48,48,48,48,48,48,46,46,05DE
 2800 DATA 49,49,49,49,49,49,49,49,49,46,
 46,49,49,49,49,49,49,49,46,5A,5A,0616
 2810 DATA 5A,5A,4B,5A,5A,5A,5A,5A,5A,
 4C,5A,5A,4C,4C,4C,4B,5A,5A,5A,5A,070C
 2820 DATA 5A,4B,5A,47,5A,5A,5A,5A,5A,4C,
 5A,4C,47,47,47,4B,5A,5A,5A,5A,5A,06DC

1670 DATA 00,00,00,01,05,00,3A,A5,BC,CD,
1E,BB,C8,C1,C9,2A,5A,90,06,00,4F,06D2
1680 DATA 09,C9,21,00,C0,06,0A,C5,06,14,
E5,DD,E5,C5,E5,21,08,9D,01,40,00,07FA
1690 DATA 1E,41,DD,7E,00,BB,28,04,09,1C,
18,F9,E5,DD,E1,E1,CD,E3,91,C1,DD,083A
1700 DATA E1,E1,23,23,23,23,DD,23,10,D6,
C1,11,50,00,19,10,CC,C9,3A,C3,8F,08A0
1710 DATA 3C,E6,07,32,C3,8F,FE,00,C0,3A,
C4,8F,06,00,4F,21,C5,8F,09,7E,FE,0947
1720 DATA FF,28,2D,FE,00,28,21,26,00,6F,
32,BD,8F,AF,32,BE,8F,E5,21,BA,8F,092B
1730 DATA CD,AA,BC,E1,29,7D,32,B4,8F,7C,
32,B5,8F,21,B1,8F,CD,AA,BC,DD,21,0BB3
1740 DATA C4,8F,DD,34,00,C9,AF,32,C4,8F,
18,BE,83,01,01,00,02,00,0F,0F,00,06DC
1750 DATA 83,01,01,C8,00,00,0F,0F,00,81,
02,02,00,00,00,0F,1E,00,82,02,02,02A3
1760 DATA 00,00,00,0F,1E,00,00,00,50,00,
50,59,5F,59,50,00,47,00,5F,00,00,02D4
1770 DATA 00,59,00,59,5F,6A,00,77,00,9F,
00,00,00,8E,00,77,8E,7F,00,6A,00,050D
1780 DATA 8E,00,77,00,6A,00,00,00,8E,00,
77,8E,7F,00,6A,00,77,00,00,00,00,0462
1790 DATA 00,00,00,00,00,00,00,00,00,00,
00,FF,FF,01,08,70,04,1C,01,28,00,02C0
1800 DATA 10,2C,01,24,70,20,2C,01,24,20,
14,28,01,14,20,14,20,01,24,20,24,0270
1810 DATA 38,01,44,80,44,4C,01,3C,20,3C,
40,01,3C,40,3C,4C,01,10,00,10,34,03B4
1820 DATA 01,14,70,14,20,01,34,50,34,3C,
01,14,40,14,1C,01,20,20,20,2C,01,02C1
1830 DATA 00,80,00,10,01,20,00,20,28,00,
00,00,CD,9C,90,CD,19,BD,C9,DD,E5,0720
1840 DATA E1,E5,DD,7E,00,FE,01,28,1A,FE,
02,28,10,FE,03,28,06,DD,21,C8,9D,092C
1850 DATA 18,10,DD,21,48,9D,18,0A,DD,21,
88,9D,18,04,DD,21,08,9D,06,00,16,062B
1860 DATA 00,23,7E,4F,23,7E,5F,CD,E0,91,
DD,E1,C9,CD,51,8F,DD,21,09,90,CD,0AC6
1870 DATA BC,90,DD,21,13,90,CD,BC,90,DD,
21,0E,90,CD,BC,90,DD,21,18,90,CD,0B2E
1880 DATA BC,90,C9,CD,4E,91,CD,63,90,DD,
7E,00,FE,01,28,0A,FE,02,28,1D,FE,0A50
1890 DATA 03,28,03,18,64,DD,34,00,DD,34,
00,06,00,DD,4E,01,16,00,DD,5E,02,057E
1900 DATA DD,21,48,9D,C3,E0,91,DD,34,00,
DD,34,00,06,00,DD,4E,01,16,00,DD,085E
1910 DATA 5E,02,DD,21,C8,9D,C3,E0,91,DD,
34,01,DD,7E,04,DD,BE,01,28,17,DD,0A20
1920 DATA 35,00,DD,35,00,06,00,DD,4E,01,
16,00,DD,5E,02,DD,21,08,9D,C3,E0,0712
1930 DATA 91,DD,35,00,06,00,DD,4E,01,16,
00,DD,5E,02,DD,21,88,9D,C3,E0,91,087F
1940 DATA DD,35,01,DD,7E,03,DD,BE,01,28,
06,DD,35,00,C3,23,91,DD,35,00,C3,0899
1950 DATA 0C,91,3A,00,8F,DD,BE,02,C0,3A,
FF,8E,47,DD,7E,01,C6,03,90,FE,07,098B

1960 DATA C8,E6,F8,FE,00,C0,3A,05,8F,FE,
00,C0,F6,FF,32,05,8F,3A,04,8F,3D,0AB5
1970 DATA 32,04,8F,C6,30,32,8E,91,C9,21,
8C,91,7E,FE,00,C8,CD,5A,8B,23,18,0974
1980 DATA F6,56,4F,54,52,45,20,46,4F,52,
54,55,4E,45,20,30,30,20,46,72,73,0694
1990 DATA 00,2D,4D,4F,44,45,20,44,45,4D,
4F,4E,53,54,52,41,54,49,4F,4E,2D,0586
2000 DATA 00,21,9A,91,7E,CD,5A,8B,23,7E,
CD,5A,8B,C9,21,A1,91,18,BA,62,68,09EA
2010 DATA 11,14,92,29,19,5E,23,56,62,6B,
09,C9,7C,C6,08,D0,11,50,C8,19,7C,0747
2020 DATA C9,CD,C8,91,06,10,C5,E5,DD,7E,
00,4E,A9,77,23,DD,23,DD,7E,00,4E,0A44
2030 DATA A9,77,23,DD,23,DD,7E,00,4E,A9,
77,23,DD,23,DD,7E,00,4E,A9,77,23,091B
2040 DATA DD,23,E1,CD,D6,91,67,C1,10,D2,
C9,00,C0,00,C8,00,D0,00,D8,00,E0,0AF8
2050 DATA 00,E8,00,F0,00,F8,50,C0,50,C8,
50,D0,50,D8,50,E0,50,E8,50,F0,50,0B38
2060 DATA F8,A0,C0,A0,C8,A0,D0,A0,D8,A0,
E0,A0,E8,A0,F0,A0,F8,F0,C0,F0,C8,1040
2070 DATA F0,D0,F0,D8,F0,E0,F0,E8,F0,F0,
F0,F8,40,C1,40,C9,40,D1,40,D9,40,0F6C
2080 DATA E1,40,E9,40,F1,40,F9,90,C1,90,
C9,90,D1,90,D9,90,E1,90,E9,90,F1,0E53
2090 DATA 90,F9,90,E1,E0,C9,E0,D1,E0,D9,
E0,E1,E0,E9,E0,F1,E0,F9,30,C2,30,1093
2100 DATA CA,30,D2,30,DA,30,E2,30,EA,30,
F2,30,FA,80,C2,80,CA,80,D2,80,DA,0CB6
2110 DATA 80,E2,80,EA,80,F2,80,FA,0C,D2,
D0,CA,D0,D2,D0,DA,D0,E2,D0,EA,D0,106C
2120 DATA F2,D0,FA,20,C3,20,CB,20,D3,20,
DB,20,E3,20,EB,20,F3,20,FB,70,C3,0BE7
2130 DATA 70,CB,70,D3,70,DB,70,C3,70,EB,
70,F3,70,FB,C0,C3,C0,CB,C0,D3,C0,0EA6
2140 DATA DB,C0,E3,C0,EB,C0,F3,C0,FB,10,
C4,10,C,10,D,10,DC,10,E4,10,EC,0D07
2150 DATA 10,F4,10,FC,60,C4,60,CC,60,D4,
60,DC,60,E4,60,EC,60,F4,60,FC,B0,0CC0
2160 DATA C4,B0,CC,B0,D4,B0,DC,B0,E4,B0,
EC,B0,F4,B0,C0,C5,00,CD,00,D5,0E37
2170 DATA 00,DD,00,E5,00,ED,00,F5,00,FD,
50,C5,50,CD,50,D5,50,DD,50,E5,50,0AAA
2180 DATA ED,50,F5,50,FD,A0,C5,A0,CD,A0,
D5,A0,DD,A0,E5,A0,ED,A0,F5,A0,FD,0F87
2190 DATA F0,C5,F0,CD,F0,D5,F0,DD,F0,E5,
F0,ED,F0,F5,F0,FD,C6,40,C6,40,CE,40,10DC
2200 DATA D6,40,DE,40,E6,40,EE,40,F6,40,
FE,90,C6,90,CE,90,D6,90,DE,90,E6,0DBA
2210 DATA 90,EE,90,F6,90,FE,90,C6,90,CE,
E0,D6,E0,DE,E0,E6,E0,EE,E0,F6,E0,11A4
2220 DATA FE,30,C7,30,CF,30,D7,30,DF,30,
E7,30,EF,30,F7,30,FF,80,C7,80,CF,0C2C
2230 DATA 80,D7,80,DF,80,E7,80,EF,80,F7,
80,FF,AF,32,C4,8F,21,40,9C,22,5A,0C2F
2240 DATA 90,AF,CD,0E,BC,3E,15,32,85,B2,
CD,C3,91,DD,21,40,9C,CD,17,8F,01,0A01

```

3410 DATA 00,00,00,CC,88,00,44,CC,CC,00,
44,CC,82,00,44,C9,C3,00,00,C3,82,07D7
3420 DATA 00,00,CC,00,00,50,E4,88,AA,50,
F0,FF,FF,55,F0,FF,55,FA,A0,00,0898
3430 DATA 50,CC,88,00,44,F0,E4,00,44,CC,
CC,00,FF,88,FF,00,FF,AA,FF,AA,55,08C5
3440 DATA AA,55,AA,00,00,CC,88,00,44,CC,
CC,00,00,C6,CC,00,41,C3,CC,00,00,083B
3450 DATA C3,82,00,00,44,88,00,AA,CC,F0,
55,FF,FA,F0,55,FF,F0,F5,00,00,F0,08DE
3460 DATA FF,00,00,CC,CC,00,00,F0,F0,00,
00,44,88,00,00,44,88,00,00,55,AA,070E
3470 DATA 00,00,FF,AA,00,44,CC,00,00,CC,
CC,88,00,41,CC,88,00,C3,C6,88,00,087F
3480 DATA 41,C3,00,00,00,CC,00,55,44,D8,
A0,FF,FF,F0,A0,FF,FA,F0,AA,00,50,0852
3490 DATA F5,AA,00,44,CC,A0,00,D8,F0,88,
00,CC,CC,88,00,FF,44,FF,55,FF,55,08AA
3500 DATA FF,55,AA,55,AA,30,30,30,30,04,
0C,0C,08,10,29,38,20,14,03,16,20,04BF
3510 DATA 04,0C,0C,20,10,29,38,20,50,03,
52,20,04,0C,0C,20,10,29,38,20,50,02AF
3520 DATA 03,52,20,04,0C,0C,20,10,29,38,
20,50,03,52,20,04,0C,0C,20,10,29,027C
3530 DATA 38,20,30,30,30,30,0F,5E,FC,A8,
5E,FC,FC,A8,FC,FC,FC,A8,00,00,00,09C3
3540 DATA 00,FC,A8,0F,5E,FC,A8,5E,FC,FC,
A8,FC,FC,00,00,00,0F,5E,FC,A8,0ABC
3550 DATA 5E,FC,FC,A8,FC,FC,FC,A8,00,00,
00,00,FC,A8,0F,5E,FC,A8,5E,FC,FC,0CAs
3560 DATA A8,FC,FC,00,00,00,00,CF,8A,CF,
CF,CF,CF,CF,00,00,00,00,00,00,08D3
3570 DATA 00,00,00,00,00,00,00,00,00,00,
00,00,00,00,00,00,00,00,00,00,0000
3580 DATA 00,00,00,00,00,00,00,00,00,00,
00,00,00,00,00,00,00,00,00,00,0000
3590 DATA 00,00,00,00,00,00,00,00,0F,5E,
FC,B9,5E,FC,FC,B9,FC,FC,FC,B9,33,0911
3600 DATA 33,33,33,33,33,33,33,33,33,33,
33,33,33,33,33,33,33,33,33,33,042F
3610 DATA 33,33,33,33,33,33,33,33,33,33,
33,33,33,33,33,33,33,33,36,3C,043B
3620 DATA 33,33,3C,3C,3C,3C,3C,3C,3C,3C,
3C,3C,3C,3C,3C,3C,3C,3C,3C,3C,04DA
3630 DATA 3C,3C,3C,3C,3C,3C,3C,3C,3C,3C,
3C,3C,3C,3C,3C,3C,3C,3C,3C,3C,04EC
3640 DATA 3C,3C,3C,3C,3C,3C,3C,3C,3C,3C,
3C,3C,3C,3C,3C,3C,3C,3C,3C,3C,04EC
3650 DATA 3C,3C,3C,3C,3C,3C,3C,3C,3C,3C,
59,28,63,29,31,39,38,37,20,70,61,052F
3660 DATA 72,20,53,74,65,70,68,61,6E,65,
20,56,61,6C,6C,6F,69,73,00,00,00,06C4
3670 DATA 00,00,00,00,00,01,00,00,00,00,
00,00,00,00,00,00,00,00,00,00,0001
3680 DATA 00,00,00,00,00,00,00,00,00,00,
00,04,28,04,28,04,28,04,28,04,28,00DC
3690 DATA 04,28,04,2C,2C,28,00,2C,2C,00,
00,04,28,00,00,04,28,00,00,04,28,018C
3700 DATA 00,00,04,28,00,00,04,28,00,00,
04,28,00,00,2C,2C,00,04,2C,2C,28,0160
3710 DATA 04,28,04,28,04,28,04,28,04,28,
04,28,00,00,00,00,00,00,00,00,00,0108
3720 DATA 00,00,00,00,00,00,00,00,15,2A,
00,00,7B,BF,00,15,B7,7F,2A,15,B7,03BA
3730 DATA 7F,2A,7B,3F,3F,BF,7B,3F,BF,
7B,3F,3F,BF,7B,3F,3F,BF,15,B7,7F,08D4
3740 DATA 2A,15,B7,7F,2A,00,7B,BF,00,00,
15,2A,00,00,00,00,00,00,00,00,00,0318
3750 DATA 00,00,00,00,00,00,00,00,00,00,
00,00,00,00,00,00,00,00,00,00,0000
3760 DATA 00,00,00,00,00,00,00,00,00,00,
00,00,00,00,00,00,00,00,00,00,0000
3770 INK 0,0:BORDER 0:INK 2,14:INK 3,9:I
NK 4,2:INK 5,18:INK 6,2:INK 7,26:INK 8,1
4:INK 9,16:INK 10,14:INK 11,15:INK 12,14
:INK 13,12:INK 14,24:INK 15,13:ENV 2,15,
-1,1:ENT 1,7,-30,1,7,30,1
3780 MODE 0:POKE 38330,0:POKE 38331,0:PO
KE 38332,0:FOR i=1 TO 30:a#=INKEY$:NEXT
3790 LOCATE 1,25:PRINT ".Pressez une tou
che.":CALL 38329
3800 MODE 1
3805 PRINT "PRESSEZ [1],[2] OU [3]:
"
3810 PRINT "[1].....D
EMONSTRATION"
3820 PRINT "[2].....JOUER
AU JOYSTICK"
3830 PRINT "[3].....JOUE
R AU CLAVIER"
3840 PRINT " TOUCHES
: [Q]=SAUTER"
3850 PRINT "
[O]=GAUCHE"
3860 PRINT "
[P]=DROITE"
3870 PRINT "
[
DEL]=ABANDON"
3880 a#=INKEY$:IF a#<>" "THEN SOUND 3,300
,15,15,1,1
3890 IF a#="1" THEN FOR i=0 TO 799:POKE
39400+i,PEEK(38600+i):NEXT i:FOR i=0 TO
79:POKE 36873+i,PEEK(38500+i):NEXT i:CAL
L 37796:GOTO 3780
3900 IF a#<>"2" AND a#<>"3" GOTO 3880
3910 IF a#="2" THEN POKE 36002,72:POKE 3
6003,75:POKE 36004,74
3920 IF a#="3" THEN POKE 36002,67:POKE 3
6003,27:POKE 36004,34
3930 CALL 35390
3940 IF PEEK(36953)=51 GOTO 3970
3950 LOCATE 3,22:PRINT "0":
3960 LOCATE 6,1:PRINT "GAME OVER":FOR i
=1 TO 3000:NEXT:GOTO 3780
3970 LOCATE 1,22:PRINT " VOUS AVEZ GAGN
E. ":FOR i=1 TO 4000:NEXT:GOTO 3780●

```