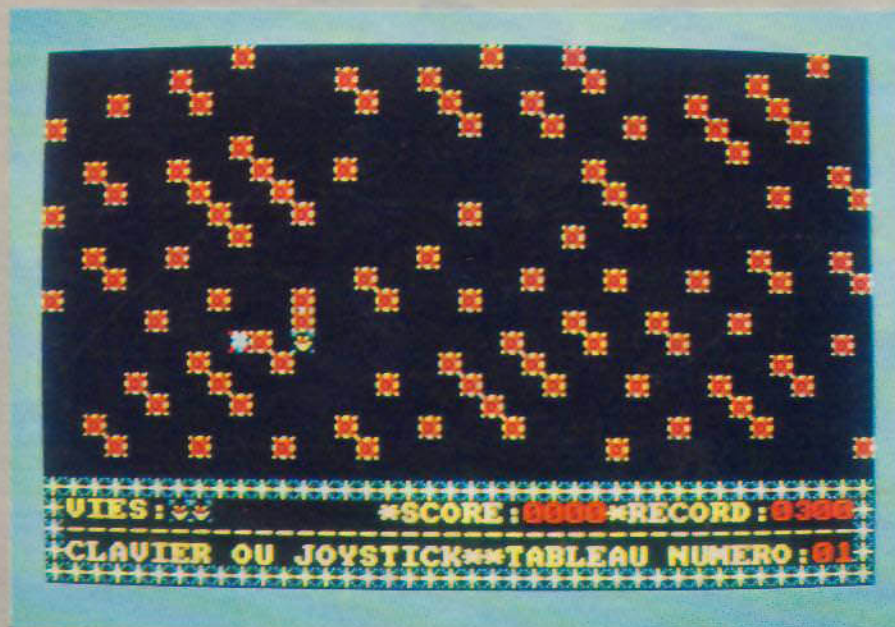


PROGRAMMES

PIEGES



Gilles QUETARD
Jeu

Pièges possède toutes les caractéristiques d'un bon jeu :
— les règles sont simples et incluses dans le programme ;
— l'action est rapide et prenante ;
— la réflexion a son mot à dire.

Le chargement s'effectue en plusieurs étapes :
— il faut taper PIEGES1, le sauver : SAVE "P1" ;
— ensuite même opération avec PIEGES2 (SAVE "P2") ;
— il reste encore à entrer le programme BASIC "PIEGES" et à mettre le tout sur disquette (ou cassette).

Un dernier effort : faire RUN "P1" puis SAVE "PIEGES1", B, &8000, &34D. Eteindre l'ordinateur et taper RUN "P2" suivi de SAVE "PIEGES2", B, &9000, &108F. Voilà, c'est terminé. Le lancement s'effectue avec RUN "PIEGES".

(Pour le 464, supprimer le s"Filln" des lignes 200 à 270).

LISTING 1

```

10 REM ***** >HB<
20 REM * * >WC<
30 REM * QUETARD GILLES * >PD<
40 REM * vous presente * >CE<
50 REM * * >ZF<
60 REM * PIEGES * >JG<
70 REM * * >BH<
80 REM * 11/86 * >EJ<
90 REM ***** >RK<
100 MEMORY &7FFF >BB<
110 REM DESSIN DE PRESENTATION >DC<
120 MODE 0 >FD<
130 INK 0,26:INK 1,0:INK 2,6:INK 3, >XE<
18:INK 4,11:INK 5,24:INK 6,23
140 MOVE 20,360:DRAW 160,390:DRAW 3 >AF<
00,360:DRAW 230,345:DRAW 160,360:DR
AW 90,345:DRAW 90,285:DRAW 125,277.
5:DRAW 125,249:DRAW 160,240:DRAW 19
5,249:DRAW 195,277.5:DRAW 230,285:D
RAW 230,345
150 MOVE 90,345:DRAW 20,360:DRAW 20 >UG<
,240:DRAW 160,210:DRAW 300,240:DRAW
300,360
160 MOVE 160,210:DRAW 160,240:MOVE >BH<
160,257.5:DRAW 160,285:MOVE 160,300
:DRAW 160,360
170 MOVE 125,249:DRAW 160,257.5:DRA >GJ<
W 195,249
180 MOVE 125,277.5:DRAW 160,285:DRA >UK<
W 195,277.5
190 MOVE 90,285:DRAW 160,300:DRAW 2 >CL<
30,285
200 MOVE 50,250:FILL 2 >GC<
210 MOVE 160,380:FILL 3 >TD<
220 MOVE 230,260:FILL 4 >PE<
230 MOVE 95,295:FILL 4:MOVE 165,305 >DF<
:FILL 2
240 MOVE 160,290:FILL 3 >WB<
250 MOVE 160,245:FILL 3 >XH<
260 MOVE 130,255:FILL 4 >XJ<
270 MOVE 165,260:FILL 2 >AK<
280 LOCATE 2,9:PRINT "G." >FL<
290 LOCATE 15,9:PRINT "ET" >CM<
300 LOCATE 8,9:PRINT "Q." >QD<
310 PEN 2:LOCATE 3,15:PRINT "AMSTRA >QE<
D CPC 6128"
320 PEN 3:LOCATE 6,19:PRINT "PRESEN >PF<
TENT"
330 PEN 4:LOCATE 2,25:PRINT "PRESSE >BG<
Z UNE TOUCHE";
340 CALL &BB06 >UH<
350 LOCATE 1,25:PRINT STRING$(19, " >RJ<

```

```

");
360 PEN 2:LOCATE 2,24:PRINT "Veull >BK<
ez patienter";
370 LOCATE 1,25:PRINT "Chargement e >EL<
n cours";
380 REM CHARGEMENT DES PROGRAMMES E >DM<
N LANGAGE MACHINE
390 LOAD "PIEGES1.BIN",32768 >RN<
400 LOAD "PIEGES2.BIN",36864 >KE<
410 REM LANCEMENT 1ER PROGRAMME >PF<
420 MODE 1:CALL &B000 >QG<
430 REM PRESENTATION ET REGLES DU J >LH<
EU
440 PEN 3:LOCATE 4,12:PRINT "JEU DE >GJ<
REFLEXE ET DE STRATEGIE,"
450 PEN 1:LOCATE 2,13:PRINT "consis >HK<
te a pieger d'horribles monstres"
460 LOCATE 5,14:PRINT "avant qu'ils >EL<
ne vous detruisent."
470 LOCATE 2,15:PRINT "Heureusement >UM<
ces monstres souffrent de"
480 LOCATE 4,16:PRINT "claustrophob >AN<
ie et meurent si aucun"
490 LOCATE 2,17:PRINT "deplacement >ZP<
ne leur est plus possible."
500 LOCATE 1,18:PRINT "A vous de le >HF<
s entourer d'obstacles avant";
510 LOCATE 2,19:PRINT "qu'ils ne vo >ZB<
us fassent votre affaire."
520 LOCATE 2,20:PRINT "Helas ces mo >VH<
nstres se reproduisent par"
530 LOCATE 4,21:PRINT "generation s >YJ<
pontanee et votre seul"
540 LOCATE 2,22:PRINT "espoir est d >GK<
e faire le meilleur score"
550 LOCATE 7,23:PRINT "possible gra >ML<
ce a vos 3 vies."
560 PEN 2:LOCATE 4,25:PRINT "POUR J >ZM<
OUER APPUYEZ SUR UNE TOUCHE."
570 CALL &BB06 >ZN<
580 REM CHOIX DU NIVEAU >TP<
590 CLS:LOCATE 4,10:PRINT "1- Nivea >QQ<
u amateur":LOCATE 4,13:PRINT "2- Ni
veau professionnel"
600 A$=INKEY$:IF A$="" THEN 600 >GG<
610 IF A$="1" THEN 650 >WH<
620 IF A$="2" THEN 670 >AJ<
630 GOTO 600 >VK<
640 REM NIVEAU AMATEUR >JL<
650 CALL 37883:IF PEEK(37675)=0 THE >VM<
N CALL 0
660 REM NIVEAU PROFESSIONNEL >ZN<
670 POKE 37675,1:POKE 38908,&40:POK >LP<
E 39024,&40:POKE 39141,&40:POKE 392
58,&40:POKE 38909,&96:POKE 39025,&9
6:POKE 39142,&96:POKE 39259,&96:POK
E 38250,&23:CALL 37883:CALL 0

```

LISTING 2

```

85 *** PIEGES 1 ***
90 A=&B000:F=&B34D:L=100:WHILE A<=F:FOR
A=A TO A+15:READ C#:K=VAL("&"+C#):S=S+K+
65536*(S+K)>32767):IF A<=F THEN POKE A,K
95 NEXT:READ D#:T=VAL("&"+D#):IF T<=S TH
EN PRINT CHR$(7);"Erreur ligne";L:END EL
SE L=L+5:WEND
100 DATA CD,FF,BB,3E,00,06,01,0E,01,CD,3
2,BC,3E,01,06,1A,04F5
105 DATA 0E,1A,CD,32,BC,3E,02,06,0C,0E,0
C,CD,32,BC,3E,03,0940
110 DATA 06,06,0E,06,CD,32,BC,DD,21,82,8
0,06,0A,C5,3A,80,0EAA
115 DATA 80,67,3A,81,80,6F,F5,CD,1A,BC,F
1,3C,32,81,80,DD,1710
120 DATA 46,00,DD,23,DD,5E,00,16,00,CB,2
3,CB,12,CB,23,CB,1D2B
125 DATA 12,CB,23,CB,12,CB,23,CB,12,E5,2
1,FE,81,19,EB,E1,253D
130 DATA E5,C5,06,08,1A,77,13,23,1A,77,1
3,D5,2B,11,00,08,2979
135 DATA 19,D1,10,F0,C1,E1,23,23,10,CB,C
1,DD,23,10,AE,C9,316B
140 DATA 02,00,25,12,11,11,11,11,0E,14,1
2,0E,14,12,11,11,3272
145 DATA 11,11,0E,14,12,11,11,11,11,0E,1
4,12,11,11,11,3384
150 DATA 0E,14,12,11,11,11,11,0E,25,02,0
5,05,05,06,0F,14,3469
155 DATA 08,0F,14,02,05,05,05,07,13,14,0
2,05,05,05,06,0F,34F9
160 DATA 14,02,05,05,05,07,13,14,02,05,0
5,05,06,0F,25,04,359B
165 DATA 0F,14,14,04,0F,14,04,0F,14,04,0
F,14,14,14,14,14,3697
170 DATA 04,0F,14,14,04,0F,14,04,0F,14,1
4,14,14,04,0F,3783
175 DATA 14,14,00,13,25,04,0F,14,14,04,0
F,14,04,0F,14,04,3870
180 DATA 0F,14,14,14,14,14,04,0F,14,14,0
0,13,14,04,0F,14,396C
185 DATA 14,14,14,14,04,0F,14,14,14,14,2
5,04,10,11,11,04,3A7E
190 DATA 0F,14,04,0F,14,04,10,11,0E,14,1
4,14,04,0F,14,14,3B72
195 DATA 14,14,14,04,10,11,0E,14,14,14,0
4,10,11,11,11,0E,3C72
200 DATA 25,0A,05,05,05,03,13,14,04,0F,1
4,0A,05,07,13,14,3D3E
205 DATA 14,14,04,0F,14,14,14,14,14,0A,0
5,07,13,14,14,14,3E42
210 DATA 09,05,05,05,06,0F,25,04,0F,14,1
▶

```

```

4,14,14,14,04,0F,3F1E
215 DATA 14,04,0F,14,14,14,14,04,0F,1
4,12,11,0E,14,04,4019
220 DATA 0F,14,14,14,14,14,14,14,0
4,0F,25,04,0F,14,413B
225 DATA 14,14,14,14,04,0F,14,04,0F,14,1
4,14,14,14,04,0F,423C
230 DATA 14,01,06,0F,14,04,0F,14,14,14,1
4,14,12,0E,14,14,4339
235 DATA 04,0F,25,04,0F,14,14,14,14,0
4,0F,14,04,10,11,4434
240 DATA 11,11,0E,14,04,10,11,11,04,0F,1
4,04,10,11,11,11,451C
245 DATA 0E,14,08,10,11,11,04,0F,25,00,1
3,14,14,14,14,14,4627
250 DATA 00,13,14,09,05,05,05,07,13,14,0
9,05,05,05,03,13,46C2
255 DATA 14,09,05,05,05,07,13,14,09,05,0
5,05,03,13,07,1E,47EF
260 DATA 87,1E,87,1E,87,1E,87,1E,87,1E,8
7,1E,F0,F0,F0,F0,4FB0
265 DATA 87,0F,87,0F,87,0F,87,0F,87,0F,8
7,0F,F0,F0,F0,F0,56D1
270 DATA 87,0F,87,0F,87,0F,87,0F,87,0F,8
7,0F,87,1E,87,1E,5B9F
275 DATA 0F,1E,0F,1E,0F,1E,0F,1E,0F,1E,0
F,1E,F0,F0,87,1E,5F32
280 DATA 87,1E,87,1E,87,1E,87,1E,87,1E,8
7,1E,87,1E,F0,F0,6595
285 DATA 0F,0F,0F,0F,0F,0F,0F,0F,0F,0F,0
F,0F,F0,F0,F0,F0,6A09
290 DATA 0F,1E,0F,1E,0F,1E,0F,1E,0F,1E,0
F,1E,87,1E,F0,F0,6D9C
295 DATA 0F,1E,0F,1E,0F,1E,0F,1E,0F,1E,0
F,1E,F0,F0,F0,F0,726A
300 DATA 87,1E,87,1E,87,1E,87,1E,87,1E,8
7,1E,87,1E,87,1E,7792
305 DATA 87,0F,87,0F,87,0F,87,0F,87,0F,8
7,0F,F0,F0,87,1E,7D9B
310 DATA 87,0F,87,0F,87,0F,87,0F,87,0F,8
7,0F,87,1E,87,1E,8269
315 DATA 0F,1E,0F,1E,0F,1E,0F,1E,0F,1E,0
F,1E,87,1E,F0,F0,85FC
320 DATA 0F,0F,0F,0F,0F,0F,0F,0F,0F,0F,0
F,0F,87,1E,87,1E,87FA
325 DATA 0F,0F,0F,0F,0F,0F,0F,0F,0F,0F,0
F,0F,F0,F0,00,00,8ABE
330 DATA 00,00,00,00,00,00,00,00,F0,00,FC,00,F
A,00,F6,00,FC,00,8F66
335 DATA FA,00,F6,00,FE,00,FC,00,FA,00,F
6,00,FC,00,FC,00,973B
340 DATA FA,00,F6,00,FE,00,FE,F0,FD,FD,F
B,FB,D7,D7,00,00,A1B2
345 DATA 00,00,00,00,00,00,00,F0,F0,FE,FE,F
D,FD,FB,FB,00,00,A97E
350 DATA 00,00,00,00,00,00,10,F0,31,FD,7
3,FB,D7,D7,FE,00,AFC6

```

```

355 DATA FC,00,FA,00,F6,00,FE,00,EC,00,C
8,00,80,00,00,00,85E4
360 DATA 00,00,00,00,00,00,00,00,00,00,0
0,00,00,00,00,00,85E4

```

LISTING 3

```

85 ##### PIEGES 2 #####
90 A=&9320:F=&A00F:L=100:WHILE A<=F:FOR
A=A TO A+15:READ C#:K=VAL("&"+C#):S=S+K+
65536*(S+K>32767):IF A<=F THEN POKE A,K
95 NEXT:READ D#:T=VAL("&"+D#):IF T<>S TH
EN PRINT CHR$(7);"Erreur ligne";L:END EL
SE L=L+5:MEND
100 DATA 03,00,00,00,00,00,03,00,01,63,01,0
1,00,00,00,00,00,0006C
105 DATA 00,00,00,00,00,00,00,00,00,00,0
0,00,00,00,00,00,0006C
110 DATA 00,00,00,00,28,41,35,CA,57,AE,3
3,CC,57,AE,37,CE,05E2
115 DATA 15,8A,19,89,90,90,07,0E,06,06,8
5,1A,85,1A,06,06,09AE
120 DATA 07,0E,90,90,CC,33,88,11,20,40,0
1,08,40,20,30,C0,0E34
125 DATA 10,80,88,11,98,22,54,44,32,88,F
0,E0,32,88,54,44,148B
130 DATA 98,22,00,00,00,00,00,00,00,00,0
0,00,00,00,00,00,1545
135 DATA 00,00,00,00,56,49,45,53,3A,20,2
0,20,20,20,20,20,1796
140 DATA 20,20,20,2A,53,43,4F,52,45,3A,2
0,20,20,20,2A,52,1AD2
145 DATA 45,43,4F,52,44,3A,20,20,20,20,4
3,4C,41,56,49,45,1EAD
150 DATA 52,20,4F,55,20,4A,4F,59,53,54,4
9,43,4B,2A,2A,54,22FB
155 DATA 41,42,4C,45,41,55,20,4E,55,4D,4
5,52,4F,3A,20,20,2715
160 DATA 56,6F,75,6C,65,7A,2D,76,6F,75,7
3,20,72,65,6A,6F,2D64
165 DATA 75,65,72,20,28,4F,2F,4E,29,20,3
F,CD,64,9F,3E,01,325B
170 DATA CD,0E,BC,06,0B,0E,0B,CD,38,BC,3
E,00,06,00,0E,00,362F
175 DATA CD,32,BC,3E,01,06,15,0E,15,CD,3

```

```

2,BC,3E,02,06,06,3A6E
180 DATA 0E,06,CD,32,BC,3E,03,06,0B,0E,0
B,CD,32,BC,3E,01,3EA2
185 DATA CD,B4,8B,26,00,16,28,2E,00,1E,1
3,CD,66,8B,3E,02,43CF
190 DATA CD,B4,8B,26,01,16,28,2E,15,1E,1
9,CD,66,8B,3E,01,4917
195 DATA CD,B4,8B,3E,00,CD,96,8B,21,40,C
6,06,29,C5,11,74,504F
200 DATA 93,E5,CD,4F,9A,E1,23,23,C1,10,F
2,21,DE,C6,06,02,5834
205 DATA C5,11,74,93,E5,CD,4F,9A,E1,23,2
3,C1,10,F2,21,2E,5F5E
210 DATA C7,06,02,C5,11,74,93,E5,CD,4F,9
A,E1,23,23,C1,10,6724
215 DATA F2,21,7E,C7,06,29,C5,11,74,93,E
5,CD,4F,9A,E1,23,6F27
220 DATA 23,C1,10,F2,3E,02,CD,B4,8B,3E,0
0,CD,96,8B,3E,01,7624
225 DATA CD,90,8B,26,01,2E,01,E5,CD,75,B
B,E1,DD,21,94,93,7E7A
230 DATA 06,26,CD,63,9A,26,01,2E,02,E5,C
D,75,8B,E1,3E,2D,84F5
235 DATA 06,26,C5,F5,CD,5D,8B,F1,C1,10,F
7,26,01,2E,03,E5,8CB6
240 DATA CD,75,8B,E1,DD,21,8A,93,06,26,C
D,63,9A,CD,E6,9B,9623
245 DATA CD,05,9D,11,20,03,21,00,90,3E,0
0,36,00,23,1B,8A,99E3
250 DATA 20,F9,8B,20,F6,CD,70,9A,06,64,D
D,21,30,93,C5,CD,A261
255 DATA 7B,9A,F5,CD,91,9A,6F,32,43,93,F
1,4F,32,42,93,CD,AAEE
260 DATA AB,9A,3E,00,BE,20,EB,3A,28,93,C
1,8B,38,05,36,01,B116
265 DATA 05,18,13,36,02,05,3A,42,93,DD,7
7,00,3A,43,93,DD,B5D3
270 DATA 77,01,DD,23,DD,23,3E,00,8B,38,C
3,DD,21,00,90,21,BBEB
275 DATA 00,C0,06,04,C5,06,CB,C5,DD,7E,0
0,FE,00,28,0A,FE,C296
280 DATA 01,E5,CC,BE,9A,C4,1B,9E,E1,C1,2
3,23,DD,23,10,E7,CAFC
285 DATA C1,10,E1,26,0C,2E,15,CD,CC,9A,0
6,05,C5,E5,11,84,D1A0
290 DATA 93,CD,4F,9A,E1,23,23,C1,10,F2,0
6,06,3A,20,93,00,DB4C
295 DATA 32,2E,93,3E,16,32,2F,93,CD,E6,9
A,3E,00,CD,1E,8B,DEB8
300 DATA 20,17,3E,4B,CD,1E,8B,20,10,3E,0
1,CD,1E,8B,20,36,E386
305 DATA 3E,4B,CD,1E,8B,20,2F,1B,DF,3A,2
E,93,06,0C,8B,38,E8F8
310 DATA D7,3A,2F,93,06,16,8B,28,10,1E,1
5,3A,2E,93,57,3E,ED9A
315 DATA F0,CD,EF,9A,CD,40,9B,1B,24,1E,1
6,3A,2E,93,57,3E,F488 ▶

```

PROGRAMMES

- 320 DATA F0, CD, EF, 9A, 18, B2, 3A, 2E, 93, 06, 1
0, BB, 28, AA, 3A, 2E, FB9B
- 325 DATA 93, 57, 3A, 2F, 93, 5F, 3E, F3, CD, EF, 9
A, 18, 9B, CD, E6, 9A, 0467
- 330 DATA 3E, 00, CD, 1E, BB, C2, F5, 97, 3E, 48, C
D, 1E, BB, C2, F5, 97, 0D13
- 335 DATA 3E, 02, CD, 1E, BB, C2, 69, 98, 3E, 49, C
D, 1E, BB, C2, 69, 98, 14AC
- 340 DATA 3E, 01, CD, 1E, BB, C2, DE, 98, 3E, 4B, C
D, 1E, BB, C2, DE, 98, 1D30
- 345 DATA 3E, 08, CD, 1E, BB, C2, 53, 99, 3E, 4A, C
D, 1E, BB, C2, 53, 99, 24A6
- 350 DATA CD, 70, 9D, DD, 4E, 00, 79, 32, 42, 93, D
D, 6E, 01, 7D, 32, 43, 2B69
- 355 DATA 93, 3A, 2E, 93, B9, 38, 0E, 28, 19, 3A, 2
F, 93, BD, 38, 1D, CA, 310F
- 360 DATA BB, 96, C3, D9, 96, 3A, 2F, 93, BD, DA, 1
8, 97, CA, 57, 97, C3, 3A4F
- 365 DATA 75, 97, 3A, 2F, 93, BD, DA, B4, 97, C3, D
2, 97, C5, E5, 0C, 2D, 4348
- 370 DATA CD, 97, 9D, FE, 00, CA, F0, 97, CD, D3, 9
D, E1, C1, CD, F8, 9D, 4ED9
- 375 DATA FE, 00, CA, FD, 95, C5, E5, 0C, CD, D3, 9
D, E1, C1, CD, F8, 9D, 5A2A
- 380 DATA FE, 00, CA, FD, 95, C5, E5, 2D, CD, D3, 9
D, E1, C1, CD, F8, 9D, 659C
- 385 DATA FE, 00, CA, FD, 95, CD, 7F, 9D, C3, FD, 9
5, C5, E5, 0C, CD, 97, 704E
- 390 DATA 9D, FE, 00, CA, F0, 97, CD, D3, 9D, E1, C
1, CD, F8, 9D, FE, 00, 7B79
- 395 DATA CA, FD, 95, CD, 7F, 9D, C3, FD, 95, C5, E
5, 0C, 2C, CD, 97, 9D, 85F6
- 400 DATA FE, 00, CA, F0, 97, CD, D3, 9D, E1, C1, C
D, F8, 9D, FE, 00, CA, 914E
- 405 DATA FD, 95, C5, E5, 2C, CD, D3, 9D, E1, C1, C
D, F8, 9D, FE, 00, CA, 9CBF
- 410 DATA FD, 95, C5, E5, 0C, CD, D3, 9D, E1, C1, C
D, F8, 9D, FE, 00, CA, AB10
- 415 DATA FD, 95, CD, 7F, 9D, C3, FD, 95, C5, E5, 0
D, 2D, CD, 97, 9D, FE, B2C3
- 420 DATA 00, CA, F0, 97, CD, D3, 9D, E1, C1, CD, F
8, 9D, FE, 00, CA, FD, BE1A
- 425 DATA 95, C5, E5, 2D, CD, D3, 9D, E1, C1, CD, F
8, 9D, FE, 00, CA, FD, C98C
- 430 DATA 95, C5, E5, 0D, CD, D3, 9D, E1, C1, CD, F
8, 9D, FE, 00, CA, FD, D4DE
- 435 DATA 95, CD, 7F, 9D, C3, FD, 95, C5, E5, 0D, C
D, 97, 9D, FE, 00, CA, DF31
- 440 DATA F0, 97, CD, D3, 9D, E1, C1, CD, F8, 9D, F
E, 00, CA, FD, 95, CD, EB20
- 445 DATA 7F, 9D, C3, FD, 95, C5, E5, 0D, 2C, CD, 9
7, 9D, FE, 00, CA, F0, F52D
- 450 DATA 97, CD, D3, 9D, E1, C1, CD, F8, 9D, FE, 0
0, CA, FD, 95, C5, E5, 0109
- 455 DATA 0D, CD, D3, 9D, E1, C1, CD, F8, 9D, FE, 0
0, CA, FD, 95, C5, E5, 0C5B
- 460 DATA 2C, CD, D3, 9D, E1, C1, CD, F8, 9D, FE, 0
0, CA, FD, 95, CD, 7F, 176E
- 465 DATA 9D, C3, FD, 95, C5, E5, 2D, CD, 97, 9D, F
E, 00, CA, F0, 97, CD, 2254
- 470 DATA D3, 9D, E1, C1, CD, F8, 9D, FE, 00, CA, F
D, 95, CD, 7F, 9D, C3, 2DCE
- 475 DATA FD, 95, C5, E5, 2C, CD, 97, 9D, FE, 00, C
A, F0, 97, CD, D3, 9D, 38C3
- 480 DATA E1, C1, CD, F8, 9D, FE, 00, CA, FD, 95, C
D, 7F, 9D, C3, FD, 95, 445F
- 485 DATA E1, C1, C3, CA, 99, 3A, 2F, 93, 06, 01, B
8, CA, FD, 95, 3A, 2E, 4CA6
- 490 DATA 93, 4F, 3A, 2F, 93, 3D, 6F, CD, AB, 9A, 7
E, 06, 01, BB, 28, 1E, 52C2
- 495 DATA D2, C7, 99, 3A, 2E, 93, 57, 3A, 2F, 93, 5
F, 3E, F0, CD, EF, 9A, 5B25
- 500 DATA CD, 54, 9B, 3A, 29, 93, FE, 00, CA, 03, 9
A, C3, FD, 95, 3A, 2E, 62F9
- 505 DATA 93, 4F, 3A, 2F, 93, 6F, 2D, 2D, AF, BD, C
A, FD, 95, E5, CD, AB, 68C2
- 510 DATA 9A, 7E, E1, 06, 01, BB, 28, EF, D2, FD, 9
5, E5, CD, AB, 9A, 36, 751F
- 515 DATA 01, E1, 61, CD, CC, 9A, CD, BE, 9A, 3A, 2
F, 93, 3D, 6F, 3A, 2E, 7CCA
- 520 DATA 93, 4F, CD, AB, 9A, 36, 00, 18, AA, 3A, 2
F, 93, 06, 14, BB, CA, 834B
- 525 DATA FD, 95, 3A, 2E, 93, 4F, 3A, 2F, 93, 3C, 6
F, CD, AB, 9A, 7E, 06, 8A61
- 530 DATA 01, BB, 28, 1E, D2, C7, 99, 3A, 2E, 93, 5
7, 3A, 2F, 93, 5F, 3E, 907D
- 535 DATA F1, CD, EF, 9A, CD, 54, 9B, 3A, 29, 93, F
E, 00, CA, 03, 9A, C3, 999E
- 540 DATA FD, 95, 3A, 2E, 93, 4F, 3A, 2F, 93, 6F, 2
C, 2C, 3E, 15, BD, CA, A017
- 545 DATA FD, 95, E5, CD, AB, 9A, 7E, E1, 06, 01, B
8, 28, EE, D2, FD, 95, AA35
- 550 DATA E5, CD, AB, 9A, 36, 01, E1, 61, CD, CC, 9
A, CD, BE, 9A, 3A, 2F, B363
- 555 DATA 93, 3C, 6F, 3A, 2E, 93, 4F, CD, AB, 9A, 3
6, 00, 18, A9, 3A, 2E, B959
- 560 DATA 93, 06, 28, BB, CA, FD, 95, 3A, 2E, 93, 4
F, 3A, 2F, 93, 6F, 0C, BFEF
- 565 DATA CD, AB, 9A, 7E, 06, 01, BB, 28, 1E, D2, C
7, 99, 3A, 2E, 93, 57, C705
- 570 DATA 3A, 2F, 93, 5F, 3E, F3, CD, EF, 9A, CD, 5
4, 9B, 3A, 29, 93, FE, CF97
- 575 DATA 00, CA, 03, 9A, C3, FD, 95, 3A, 2F, 93, 6
F, 3A, 2E, 93, 4F, 0C, D614
- 580 DATA 0C, 3E, 29, B9, CA, FD, 95, E5, CD, AB, 9
A, 7E, E1, 06, 01, BB, DEAE
- 585 DATA 28, EE, D2, FD, 95, E5, CD, AB, 9A, 36, 0
1, E1, 61, CD, CC, 9A, E8C8
- 590 DATA CD, BE, 9A, 3A, 2F, 93, 6F, 3A, 2E, 93, 3
C, 4F, CD, AB, 9A, 36, F023
- 595 DATA 00, 18, A9, 3A, 2E, 93, 06, 01, BB, CA, F
D, 95, 3A, 2E, 93, 4F, F644
- 600 DATA 3A, 2F, 93, 6F, 0D, CD, AB, 9A, 7E, 06, 0
1, BB, 28, 1E, D2, C7, FCE7
- 605 DATA 99, 3A, 2E, 93, 57, 3A, 2F, 93, 5F, 3E, F
2, CD, EF, 9A, CD, 54, 04D4
- 610 DATA 9B, 3A, 29, 93, FE, 00, CA, 03, 9A, C3, F
D, 95, 3A, 2F, 93, 6F, 0C8A
- 615 DATA 3A, 2E, 93, 4F, 0D, 0D, AF, B9, CA, FD, 9
5, E5, CD, AB, 9A, 7E, 1524
- 620 DATA E1, 06, 01, BB, 28, EF, D2, FD, 95, E5, C
D, AB, 9A, 36, 01, E1, 1E4B
- 625 DATA 61, CD, CC, 9A, CD, BE, 9A, 3A, 2F, 93, 6
F, 3A, 2E, 93, 3D, 4F, 25F6
- 630 DATA CD, AB, 9A, 36, 00, 18, AA, CD, D7, 9B, 3
A, 20, 93, FE, 01, 28, 2D50
- 635 DATA 0A, 3D, 32, 20, 93, CD, E6, 9B, C3, 73, 9
5, CD, BB, 9C, FE, 00, 35B7
- 640 DATA C0, 3E, 03, 32, 20, 93, AF, 32, 21, 93, 3
2, 22, 93, 32, 23, 93, 3B01
- 645 DATA 3E, 01, 32, 27, 93, 32, 29, 93, 32, 2A, 9
3, 3E, 63, 32, 28, 93, 3F97
- 650 DATA C3, FE, 93, 3A, 28, 93, FE, 5B, 28, 25, 3
D, 32, 28, 93, 47, 3E, 4635
- 655 DATA 64, 90, 32, 29, 93, 3A, 27, 93, 3C, 32, 2
7, 93, 3E, 01, 32, 2A, 4ACE
- 660 DATA 93, CD, 1F, 9C, CD, 62, A0, 3E, 23, 32, 6
A, 95, C3, ED, 94, 3A, 52C8
- 665 DATA 2B, 93, FE, 01, 28, E6, 3E, 01, 32, 29, 9
3, 32, 27, 93, 32, 2A, 5808
- 670 DATA 93, 32, 2B, 93, 3E, 23, 32, 6A, 95, 3E, 6
3, 32, 28, 93, C9, 06, 5D7A
- 675 DATA 08, 1A, 77, 13, D5, E5, 23, 1A, 77, 11, 0
0, 08, E1, 19, D1, 13, 62BB
- 680 DATA 10, EF, C9, C5, DD, 7E, 00, CD, 5D, BB, D
D, 23, C1, 10, F4, C9, 6BE6
- 685 DATA ED, 5F, 32, 2C, 93, ED, 5F, 32, 2D, 93, C
9, 3A, 2C, 93, 4F, 87, 72F9
- 690 DATA 87, 87, 81, 3C, 32, 2C, 93, FE, 28, 38, 0
4, D6, 28, 18, F8, 3C, 7961
- 695 DATA C9, 3A, 2D, 93, 4F, 87, 81, 87, 87, 81, 3
C, 32, 2D, 93, FE, 13, 8049
- 700 DATA 38, 04, D6, 14, 18, F8, 3C, C9, 26, 00, 2
D, 29, 29, 29, E5, D1, 8608
- 705 DATA 29, 29, 19, 06, 00, 0D, 09, 0C, 16, 90, 1
E, 00, 19, C9, 11, 54, 88A6
- 710 DATA 93, CD, 4F, 9A, C9, 11, 64, 93, CD, 4F, 9
A, C9, 25, 2D, E5, 26, 909C
- 715 DATA 00, 29, 29, 29, 29, 54, 5D, 29, 29, 19, D
1, 7A, 87, 16, 00, 5F, 94A3
- 720 DATA 19, 11, 00, C0, 19, C9, 21, 88, 13, 2B, A
F, BC, 20, FB, C9, F5, 9B9A
- 725 DATA EB, CD, F7, 9C, F1, 06, F0, F5, BB, 28, 1
5, F1, 06, F1, F5, BB, A64B
- 730 DATA 28, 1D, F1, 06, F2, F5, BB, 28, 22, F1, 0
6, F3, F5, BB, 28, 24, AES3
- 735 DATA 7B, 3D, 32, 2F, 93, 06, 00, 0E, 50, 37, 3
F, ED, 42, 18, 1C, 7B, B2B7
- 740 DATA 3C, 32, 2F, 93, 06, 00, 0E, 50, 09, 18, 1
0, 7A, 3D, 32, 2E, 93, B626
- 745 DATA 2B, 2B, 18, 07, 7A, 3C, 32, 2E, 93, 23, 2

PROGRAMMES

3, F1, CD, C5, 9A, C9, BC70
 750 DATA 21, 56, C6, 06, 05, C5, 11, 74, 93, E5, C
 D, 4F, 9A, E1, 23, 23, C357
 755 DATA C1, 10, F2, C9, 06, 01, DD, 21, 30, 93, D
 D, 4E, 00, DD, 6E, 01, CA22
 760 DATA C5, 0D, 2D, 06, 03, C5, 06, 03, AF, B9, 2
 8, 1A, AF, BD, 28, 16, CF4C
 765 DATA 3E, 29, B9, 28, 11, 3E, 15, BD, 28, 0C, C
 5, E5, CD, AB, 9A, 7E, D620
 770 DATA E1, C1, FE, 00, 28, 0E, 2C, 10, DF, C1, 0
 C, 2D, 2D, 2D, 10, D5, DC4A
 775 DATA 3E, 01, 18, 02, C1, AF, C1, FE, 00, 28, 2
 F, DD, 6E, 01, C5, 61, E29B
 780 DATA C5, CD, F7, 9C, 6B, 4A, CD, AB, 9A, 36, 0
 0, CD, 28, 9C, 3A, 29, EAEE
 785 DATA 93, 3D, 32, 29, 93, FE, 00, C1, 28, 06, C
 D, 95, 9C, CD, 10, A0, F1D4
 790 DATA C1, 05, 3A, 29, 93, BB, C8, 04, 18, 90, 3
 A, 29, 93, BB, C8, D8, F90A
 795 DATA 04, DD, 23, DD, 23, 18, B3, 3A, 2E, 93, 6
 7, 3A, 2F, 93, 6F, CD, FF43
 800 DATA F7, 9C, CD, F6, 9F, C9, 3A, 20, 93, 21, 9
 C, C6, 47, 11, 64, 93, 07C0
 805 DATA C5, E5, CD, 4F, 9A, E1, C1, 23, 23, 10, F
 2, 3E, 02, CD, B4, BB, 1086
 810 DATA 3A, 20, 93, 47, 3E, 06, B0, 67, 2E, 01, 3
 E, 09, 90, 47, E5, CD, 15E4
 815 DATA 75, BB, E1, 3E, 20, C5, F5, CD, 5D, BB, F
 1, C1, 10, F7, C9, 3E, 1FB2
 820 DATA 01, CD, B4, BB, CD, 6C, BB, C9, 3A, 27, 9
 3, 47, 3A, 23, 93, B0, 2757
 825 DATA 32, 23, 93, FE, 0A, 30, 3E, 3A, 21, 93, 4
 7, 3A, 24, 93, BB, 28, 2CBB
 830 DATA 1A, 38, 04, CD, 05, 9D, C9, 3A, 23, 93, 3
 2, 26, 93, 3A, 22, 93, 3213
 835 DATA 32, 25, 93, 3A, 21, 93, 32, 24, 93, 18, E
 8, 3A, 22, 93, 47, 3A, 3744
 840 DATA 25, 93, BB, 28, 04, 38, E0, 18, DA, 3A, 2
 3, 93, 47, 3A, 26, 93, 3D14
 845 DATA B8, 30, D0, 18, D2, 3A, 23, 93, D6, 0A, 3
 2, 23, 93, 3A, 22, 93, 435D
 850 DATA 3C, 32, 22, 93, FE, 0A, 38, AF, AF, 32, 2
 2, 93, 3A, 21, 93, 3C, 492F
 855 DATA 32, 21, 93, 18, A2, 3A, 29, 93, BB, D8, C
 5, 21, 30, 93, 05, 48, 4F4B
 860 DATA 78, 81, 06, 00, 4F, 09, E5, EB, E1, 23, 2
 3, C1, C5, 3A, 29, 93, 5615
 865 DATA C6, 01, 90, 87, 4F, 06, 00, ED, B0, C1, C
 9, CD, 1F, 9C, 26, 07, 5D24
 870 DATA 2E, 0A, CD, 75, BB, DD, 21, E0, 93, 06, 1
 B, CD, 63, 9A, CD, 03, 6485
 875 DATA BB, CD, 18, BB, F5, FE, 4F, 28, 14, F1, F
 5, FE, 6F, 28, 11, F1, 6DDB
 880 DATA F5, FE, 4E, 28, 0E, F1, FE, 6E, 20, E4, 3
 E, 01, C9, F1, AF, C9, 7724
 885 DATA F1, AF, C9, F1, 3E, 01, C9, E5, CD, CC, 9
 A, E5, 11, 84, 93, CD, 8178
 890 DATA 4F, 9A, E1, D1, C9, 3E, 02, CD, B4, BB, C
 D, 90, BB, 2E, 01, 26, B9C5
 895 DATA 17, E5, CD, 75, BB, E1, 3A, 21, 93, C6, 3
 0, CD, 5D, BB, 3A, 22, 91C4
 900 DATA 93, C6, 30, CD, 5D, BB, 3A, 23, 93, C6, 3
 0, CD, 5D, BB, 3E, 30, 996B
 905 DATA CD, 5D, BB, 2E, 01, 26, 23, E5, CD, 75, B
 B, E1, 3A, 24, 93, C6, A142
 910 DATA 30, CD, 5D, BB, 3A, 25, 93, C6, 30, CD, 5
 D, BB, 3A, 26, 93, C6, ABDD
 915 DATA 30, CD, 5D, BB, 3E, 30, CD, 5D, BB, 2E, 0
 3, 26, 25, E5, CD, 75, AFEB
 920 DATA BB, E1, 3E, 30, CD, 5D, BB, 3A, 27, 93, C
 6, 30, CD, 5D, BB, C9, B86F
 925 DATA 3A, 2A, 93, 3D, B7, DD, 21, 30, 93, 06, 0
 0, 4F, DD, 09, C9, 3A, BE29
 930 DATA 29, 93, 47, 3A, 2A, 93, BB, 30, 08, 3A, 2
 A, 93, 3C, 32, 2A, 93, C335
 935 DATA C9, 3E, 01, 32, 2A, 93, C9, 3A, 2E, 93, B
 9, 20, 33, 3A, 2F, 93, C8FB
 940 DATA BD, 20, 2D, DD, 71, 00, DD, 75, 01, 61, E
 5, C5, CD, CC, 9A, CD, D1AE
 945 DATA 1B, 9E, CD, F6, 9F, C1, E1, CD, AB, 9A, 3
 6, 02, 3A, 42, 93, 67, DA28
 950 DATA 3A, 43, 93, 6F, CD, F7, 9C, 4A, 6B, CD, A
 8, 9A, 36, 00, AF, C9, E279
 955 DATA 3E, 01, C9, C5, E5, CD, AB, 9A, 7E, FE, 0
 0, 20, 16, 36, 02, E1, EA05
 960 DATA C1, DD, 71, 00, DD, 75, 01, 61, CD, CC, 9
 A, CD, 1B, 9E, CD, E6, F334
 965 DATA 9F, AF, C9, 3E, 01, E1, C1, C9, C5, E5, F
 E, 00, 20, 18, 61, CD, FC03
 970 DATA F7, 9C, CD, E6, 9A, CD, E6, 9A, 4A, 6B, C
 D, AB, 9A, 36, 00, CD, 05F7
 975 DATA 7F, 9D, AF, E1, C1, C9, 3E, 01, E1, C1, C
 9, 11, 44, 93, CD, 4F, 0EDB
 980 DATA 9A, C9, 02, 02, 02, 07, 01, 00, C8, 01, 0
 F, FF, 0A, 02, 0A, 04, 123D
 985 DATA 01, 01, EC, 01, 04, 01, 00, 00, 00, 00, 0
 9, 00, 00, 02, 01, 00, 133D
 990 DATA 00, 00, 00, 09, 00, 00, 01, 01, 00, 00, 0
 0, 00, 09, 00, 00, 04, 1355
 995 DATA 01, 00, 02, 00, 00, 00, 18, 00, 02, 01, 0
 0, 01, 00, 00, 00, 18, 138C
 1000 DATA 00, 01, 01, 00, 02, 00, 00, 00, 18, 00,
 01, 00, 00, 7F, 00, 00, 1428
 1005 DATA 0F, 01, 00, 01, 00, 00, D5, 00, 00, 0F,
 01, 00, 02, 01, 01, 20, 1542
 1010 DATA 03, 00, 0F, 00, 00, 01, 00, 00, 00, 00,
 00, 0C, 00, 00, 02, 00, 1563
 1015 DATA 00, 00, 00, 00, 0A, 00, 00, 04, 00, 00,
 00, 00, 00, 0A, 00, 00, 157B
 1020 DATA 01, 00, 00, 00, 00, 00, 0C, 00, 00, 66,
 01, 18, 0C, 01, 18, 0C, 1638
 1025 DATA 01, 18, D5, 00, 18, D5, 00, 18, 0C, 01,
 30, 66, 01, 24, 66, 01, 195A
 1030 DATA 0C, 66, 01, 30, EF, 00, 0C, 0C, 01, 0C,
 1C, 01, 0C, 3F, 01, 0C, 1886
 1035 DATA 66, 01, 30, 66, 01, 18, 0C, 01, 18, 0C,
 01, 18, D5, 00, 18, D5, 1EAB
 1040 DATA 00, 18, 0C, 01, 30, 66, 01, 18, 0C, 01,
 18, 1C, 01, 18, 3F, 01, 2016
 1045 DATA 0C, 1C, 01, 0C, 0C, 01, 18, 7B, 01, 18,
 66, 01, 30, DE, 01, 3F, 22B9
 1050 DATA 01, BC, 03, 64, FA, 01, 3F, 01, 53, 03,
 46, DE, 01, 3F, 01, BC, 27BF
 1055 DATA 03, D2, AA, 01, 3F, 01, 53, 03, 46, 3F,
 01, 32, 3F, 01, 32, 1C, 2AEB
 1060 DATA 01, 64, 3F, 01, 64, EF, 00, 64, FD, 00,
 96, 3F, 01, 32, 3F, 01, 2FB8
 1065 DATA 32, 1C, 01, 64, 3F, 01, 64, D5, 00, 64,
 EF, 00, 96, 3F, 01, 32, 3413
 1070 DATA 3F, 01, 32, 9F, 00, 64, BE, 00, 64, EF,
 00, 64, FD, 00, 64, 1C, 397A
 1075 DATA 01, 64, B3, 00, 32, B3, 00, 32, BE, 00,
 64, EF, 00, 64, D5, 00, 3EF3
 1080 DATA 64, EF, 00, 96, CD, A7, BC, 3E, 01, 21,
 22, 9E, CD, BC, BC, 06, 4677
 1085 DATA 1D, 11, A9, 9E, DD, 21, 34, 9E, 3E, 0F,
 BB, 28, 4A, 1A, DD, 77, 4CA1
 1090 DATA 03, DD, 77, 15, 3D, DD, 77, 0C, 13, 1A,
 DD, 77, 04, DD, 77, 0D, 5290
 1095 DATA DD, 77, 16, 13, 1A, DD, 77, 07, DD, 77,
 10, DD, 77, 19, AF, DD, 59DF
 1100 DATA 77, 08, DD, 77, 11, DD, 77, 1A, 13, F5,
 C5, D5, E5, 21, 34, 9E, 61AB
 1105 DATA CD, AA, BC, 30, FB, 21, 3D, 9E, CD, AA,
 BC, 21, 46, 9E, CD, AA, 6AB4
 1110 DATA BC, E1, D1, C1, F1, 18, 1C, F5, C5, D5,
 E5, 21, 4F, 9E, CD, AA, 7501
 1115 DATA BC, 30, FB, 21, 58, 9E, CD, AA, BC, 21,
 61, 9E, CD, AA, BC, E1, 7E66
 1120 DATA D1, C1, F1, 10, 9F, C9, CD, A7, BC, 21,
 6A, 9E, CD, AA, BC, 21, 87FE
 1125 DATA 73, 9E, CD, AA, BC, C9, CD, A7, BC, 3E,
 01, 21, 29, 9E, CD, BC, 90EB
 1130 DATA BC, 3E, FF, 21, 2D, 9E, CD, BF, BC, 21,
 7C, 9E, CD, AA, BC, C9, 9A4F
 1135 DATA CD, A7, BC, 06, 04, 11, FD, 9E, DD, 21,
 85, 9E, 1A, DD, 77, 03, A1C7
 1140 DATA 13, 1A, DD, 77, 04, 13, 1A, DD, 77, 0C,
 13, 1A, DD, 77, 0D, 13, A67A
 1145 DATA 1A, DD, 77, 15, 13, 1A, DD, 77, 16, 13,
 1A, DD, 77, 07, DD, 77, AC70
 1150 DATA 10, DD, 77, 19, 13, F5, C5, D5, E5, 21,
 85, 9E, CD, AA, BC, 21, B50C
 1155 DATA BE, 9E, CD, AA, BC, 21, 97, 9E, CD, AA,
 BC, E1, D1, C1, F1, 10, BF68
 1160 DATA B7, C9, CD, A7, BC, 06, 19, 11, 19, 9F,
 DD, 21, A0, 9E, 1A, DD, C733
 1165 DATA 77, 03, 13, 1A, DD, 77, 04, 13, 1A, DD,
 77, 07, 13, F5, C5, D5, CD5C
 1170 DATA E5, 21, A0, 9E, CD, AA, BC, 30, FB, E1,
 D1, C1, F1, 10, DB, C9, D816