

LOADING INSTRUCTIONS

SPECTRUM

Type LOAD ""

Press the ENTER key.

Press the PLAY button on your recorder.

COMMODORE

Cassette

Hold down the SHIFT key and press the RUN/STOP key.

Press the PLAY button on your recorder.

Disc

Type LOAD "*" ,8,1

Press RETURN

AMSTRAD

Cassette

CPC 6128, 664 and CPC 464 with disc.

Hold down SHIFT and press the @ key.

Enter TAPE then press RETURN.

Now follow the following CPC 464 cassette loading instructions.

CPC 464 Cassette Loading

Hold down CTRL and press the small ENTER key.

Press the PLAY button on your recorder.

Disc

Enter RUN "DISC"

Press RETURN

ATARI

Cassette

Connect your tape recorder to your Atari computer.

Place the tape in your tape recorder and rewind to the beginning.

Switch OFF your computer.

Atari 800 hold down START and switch ON computer.

Atari 800 XL and 130 XE hold down START and OPTION switch ON computer.

NOTE: Full loading instructions can be found in your Atari Manual.

THE COMET GAME

For some time now, certain scientists have believed that the coma surrounding Halley's Comet is capable of supporting very basic bacterial life. This view is not widely accepted and it would be fair to say that main-stream scientific thought laughs at such theories. How could a massive lump of ice, travelling towards Earth at 200,000 Kilometers per hour, support life?

But what if it does?

What if the comet not only supports such life, but the bacterias cultured in the depths of space are toxic; lethal to all life on Earth?

After launch, you will need to negotiate your way to the comet, responding quickly and efficiently to the many problems which will occur on the way. Finally, having reached the comet, fly low and fast over its surface seeking out and destroying the deadly germ bags.

HOW TO PLAY

As the pilot is in suspended animation during the flight, you play the part of the ship's computer.

On the way to the comet you will have to look after the pilot's well-being and deal with the several emergencies that will crop up. These emergencies must be dealt with immediately and are

pinpointed by the relevant status indicator lighting up.

COMPUTER ARGUMENT

A random sequence of LED's will light up on the left side of the circuit. You must match the sequence on the right hand side within the time limit by moving the probe up and down the circuit and by setting/resetting the lines into the chip.

INTERPLANETARY SAFEGUARD

Move the x-hair and fire a plasma bolt to intercept the incoming missiles. Each time that you are hit, your ship gets darker and after several hits, your ship will explode.

ANTENNA ALIGNMENT

Move the antenna left and right to align it to the highest frequency before time runs out.

LIFE SUPPORT INFESTATION

Some deadly germ bags have got into an oxygen supply line. You must blast all the germ bags before your time runs out.

COFFEE GAME

The object is to keep the well-being level as high as possible by drinking coffee. Your well-being goes down when the

Life Support System drops below halfway.
Move the cursor to an icon and use fire to select/unselect it.

Tap : Fills the jug with water

Grinder : Fills the container with coffee

P : Does what you think it does

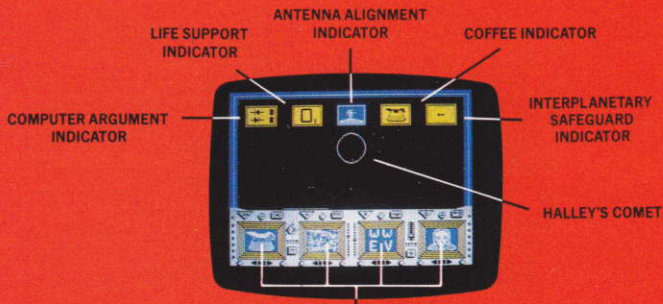
Perculator of coffee : Takes water and coffee from the jug and container to create 2 units

Syringe : Pumps the coffee from the perculator into the life support system

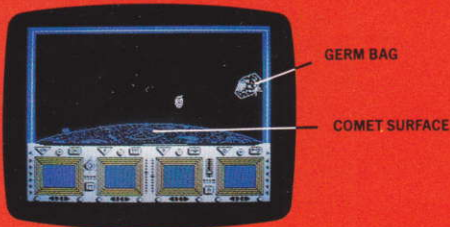
Selecting the **JUG, GRINDER** or the **WELLBEING** icons have no effect.

If you complete the flight to the comet successfully, your computer will place you in low orbit around the comet.

You must now shoot the germ bags as quickly as possible in order to save humanity from their lethal threat.



SEMI-AUTONOMOUS ICONOID DISPLAYS





Firebird is a Registered Trade Mark of British Telecommunications plc.

Guarantee

If this program is faulty and fails to load, please return it to the address below and it will be replaced free of charge and postage refunded. This offer does not affect you statutory consumer rights.

© BT 1986

Copyright Notice

Copyright subsists in all Firebird Software, documentation and artwork. All rights reserved. No part of this software may be copied, transmitted in any form or by any means. This software is sold on the condition that it shall not be hired out without the express permission of the publisher.