

# THE MONSTER'S CASTLE

**C. CAUCHOIS  
et F. DUPUIS**

Valable pour CPC  
664 - 6128

*Le monstre SKUNK a capturé la princesse VAPSY de SHADOW ISLAND et l'a enfermée dans son château. Le roi NAKYPSO a fait appel à vous pour la délivrer. Mais attention ce ne sera pas facile car il vous faudra détruire toutes les briques de chaque salle du château.*

Après le chargement, l'utilisateur pourra soit sélectionner le clavier, soit le joystick, soit la redéfinition des touches ou bien regarder le tableau des scores.

THE MONSTER'S CASTLE est composé de 4 fichiers :

- TMC.BAS (Loader BASIC)
- TMC.SCR (Graphique)
- TMC.PRG (Programme)
- RECORD.DAT (Tableau des scores)

Le fichier FM.BAS crée le fichier binaire TMC.SCR.

Le fichier TABLEAU.BAS crée le fichier RECORD.DAT.

Pour démarrer faire run "TMC".

THE MONSTER'S CASTLE a une petite particularité, ce programme possède un tableau des scores permanent. C'est-à-dire que lorsque vous avez battu un score du tableau des scores, l'ordinateur vous demande votre nom (la touche DEL ne fonctionnant pas), ensuite il l'enregistre sur la disquette en créant un nouveau fichier RECORD.DAT et en effaçant le fichier RECORD.BAK.

## ASTUCES :

- Pour obtenir des vies infinies, supprimer dans le fichier TMC.PRG la ligne 1340.

- Pour obtenir de l'énergie infinie, rajouter dans le fichier TMC.PRG la ligne 1235 pw=623.

- Pour voir les différents tableaux en jouant au clavier, changer dans le fichier TMC.PRG la ligne 650 en :

- 650 sc=400 pour le tableau 02
- 650 sc=820 pour le tableau 03
- 650 sc=1280 pour le tableau 04
- 650 sc=1640 pour le tableau 05
- 650 sc=2120 pour le tableau 06
- 650 sc=2840 pour le tableau 07
- 650 sc=3200 pour le tableau 08
- 650 sc=3760 pour le tableau 09
- 650 sc=4240 pour le tableau 10
- 650 sc=4600 pour le tableau 11
- 650 sc=4990 pour le tableau 12
- 650 sc=5430 pour le tableau 13
- 650 sc=5960 pour le tableau 14
- 650 sc=6440 pour le tableau 15

- Pour voir les différents tableaux en jouant au joystick, faire comme précédemment mais au lieu de modifier la ligne 650, ce sera la ligne 830.

PS : Pour lister le fichier TMC.PRG, faire LOAD "TMC.PRG" puis supprimer la ligne 140 car elle empêche le BREAK et le CTRL-SHIFT-ESC.

## LE JEU :

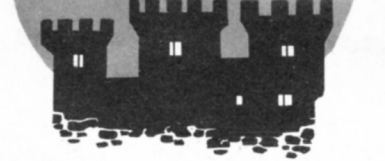
THE MONSTER'S CASTLE est un casse-brique. Au début de la partie, après avoir choisi soit le clavier ou soit le joystick, vous avez 4 vies et 100 % d'énergie. Avant de lancer votre balle, vous pouvez déplacer votre batte et lorsque vous vous serez placé, vous appuierez sur le bouton de tir et la balle partira dans la direction de votre dernier déplacement.

Les différentes briques sont les suivantes :

- les briques rouges et blanches qui se détruisent et qui valent 10 points
- les briques grises et blanches en forme de briques (!) qui sont indestructibles
- les briques grises et blanches qui bougent et qui sont indestructibles
- les briques grises et blanches formées de quatre triangles qui retirent 5 % au niveau d'énergie et qui sont indestructibles

Lorsque votre niveau d'énergie est à 0, inutile de vous dire que vous perdez une vie. Tout les trois tableaux vous gagnez une vie supplémentaire et tout les deux tableaux vous avez le plein d'énergie. Lorsque vous avez détruit toutes les briques du tableau, un passage se crée en haut de l'écran. Une fois passé dans ce trou, vous irez au tableau suivant. A partir du deuxième tableau, le trou en bas du tableau est rétréci par des barres de briques qui retirent 5 % au niveau d'énergie, cela pourra vous rendre service, mais attention à votre niveau d'énergie.





## TMC-BAS

```

10 CLS >MB
20 MODE 0 >BD
30 INK 0,0:INK 1,7:INK 2,16:INK 3,1 >TM
:INK 4,24:INK 5,26:INK 6,12:INK 7,1
3:INK 8,3:INK 9,10:INK 10,14: BORDER
0
40 LOAD"TMC.SCR" >LD
45 CLEAR INPUT >DH
50 READ a >CE
60 IF a=-1 THEN RESTORE 220:GOTO 50 >BE

70 SOUND 1,a,35,15 >MH
80 IF INKEY$=CHR$(32) THEN 110 >XA
90 IF INKEY(76)=0 THEN 110 >TN
100 GOTO 50 >RC
110 b=15 >UH
120 b=b-1 >BF
130 IF b=-1 THEN 180 >MR
140 READ a >JA
150 IF a=-1 THEN RESTORE 220:GOTO 1 >DP
40 >MU
160 SOUND 1,a,35,b >YH
170 GOTO 120 >YH
180 FOR c=1 TO 26 >CC
190 LOCATE 20,25:PRINT" " >UE
200 NEXT >DH
210 RUN"TMC.PRG" >LH
220 DATA 95,95,142,127,119,106,95,9 >GH
5,119,95,95,119,95,95,142,119,142,1
79,119,142,142,106,119,127,-1

```



## FM-BAS

```

10 ' >LA
20 ' PRESENTATION >LB
30 ' >LC
40 CLS:MODE 0 >MB
50 INK 0,0:INK 1,7:INK 2,16:INK 3,1 >TP
:INK 4,24:INK 5,26:INK 6,12:INK 7,1
3:INK 8,3:INK 9,10:INK 10,14: BORDER
0
60 FOR a=0 TO 639 STEP 3::PLOT a,0, >ZT
6: DRAW a,130:NEXT:a=0
70 x=CINT(RND*639) >NN

```

```

80 y=CINT(RND*399) >NU
90 IF y<132 THEN 80 >MG
100 PLOT x,y,5 >VE
110 a=a+1 >BA
120 IF a=100 THEN 140 >NC
130 GOTO 70 >RH
140 FOR a=169 TO 469 STEP 3:PLOT a, >YT
80,7: DRAW a,240:NEXT
150 FOR a=80 TO 290 STEP 2:PLOT 69, >XX
a,7: DRAW 169,a:NEXT
160 FOR a=80 TO 290 STEP 2:PLOT 469 >YJ
,a,7: DRAW 569,a:NEXT
170 PLOT 173,80,0: DRAW 173,240: PLOT >ZD
465,80,0: DRAW 465,240
180 a=90:b=450 >PD
190 DEG >RG
200 MOVE 319,160 >BC
210 PLOT 319+50*COS(a),160+50*SIN(a >EE
),8
220 DRAW 319+50*COS(b),160+50*SIN(b >CR
)
230 a=a+2:b=b-2 >XF
240 IF a=180 AND b=360 THEN 260 >WZ
250 GOTO 200 >YF
260 FOR a=160 TO 80 STEP -2 >TF
270 PLOT 269,a,8: DRAW 369,a:NEXT >AX
280 FOR a=240 TO 260 STEP 2:PLOT 18 >ZU
9,a,7: DRAW 209,a:NEXT
290 FOR a=240 TO 260 STEP 2:PLOT 22 >ZU
9,a,7: DRAW 249,a:NEXT
300 FOR a=240 TO 260 STEP 2:PLOT 26 >ZU
9,a,7: DRAW 289,a:NEXT
310 FOR a=240 TO 260 STEP 2:PLOT 30 >ZJ
9,a,7: DRAW 329,a:NEXT
320 FOR a=240 TO 260 STEP 2:PLOT 34 >ZU
9,a,7: DRAW 369,a:NEXT
330 FOR a=240 TO 260 STEP 2:PLOT 38 >ZU
9,a,7: DRAW 409,a:NEXT
340 FOR a=240 TO 260 STEP 2:PLOT 42 >ZU
9,a,7: DRAW 449,a:NEXT
350 FOR a=290 TO 310 STEP 2:PLOT 69 >XP
,a,7: DRAW 89,a:NEXT
360 FOR a=290 TO 310 STEP 2:PLOT 10 >ZL
9,a,7: DRAW 129,a:NEXT
370 FOR a=290 TO 310 STEP 2:PLOT 14 >ZW
9,a,7: DRAW 169,a:NEXT
380 FOR a=290 TO 310 STEP 2:PLOT 46 >ZH
9,a,7: DRAW 489,a:NEXT
390 FOR a=290 TO 310 STEP 2:PLOT 50 >ZY
9,a,7: DRAW 529,a:NEXT
400 FOR a=290 TO 310 STEP 2:PLOT 54 >ZY
9,a,7: DRAW 569,a:NEXT
410 a=90:b=450 >NK
420 MOVE 319,160 >BG
430 PLOT 319+50*COS(a),160+50*SIN(a >EA
),0
440 DRAW 319+50*COS(b),160+50*SIN(b >CW
)
450 a=a+25:b=b-25 >LR
460 IF a=165 AND b=375 THEN 480 >WT
470 GOTO 420 >ZD
480 a=155:b=385 >XJ
490 MOVE 319,160 >CD
500 PLOT 319+50*COS(a),160+50*SIN(a >EY
),0
510 DRAW 319+50*COS(b),160+50*SIN(b >CU
)
520 a=a+15:b=b-15 >LM
530 IF a=185 AND b=355 THEN 550 >WN
540 GOTO 490 >ZJ
550 FOR a=155 TO 80 STEP -15:PLOT 2 >AE
69,a,0: DRAW 369,a:NEXT
560 FOR a=240 TO 340: PLOT 263,a,7:D >RW
RAW 379,a:NEXT
570 PLOT 259,242,0: DRAW 10,0: DRAW >JZ
0,20: DRAW 20,0: DRAW 0,-20: DRAW
20,0: DRAW 0,20: DRAW 20,0: DRAW 0,
-20: DRAW 20,0: DRAW 0,20: DRAW 20,
0: DRAW 0,-20: DRAW 10,0
580 FOR a=340 TO 360 STEP 2:PLOT 26 >ZU
3,a,7: DRAW 283,a:NEXT
590 FOR a=340 TO 360 STEP 2:PLOT 30 >ZX
9,a,7: DRAW 329,a:NEXT
600 FOR a=340 TO 360 STEP 2:PLOT 35 >ZZ
9,a,7: DRAW 379,a:NEXT
610 PLOT 99,250,0: DRAW 99,210: PLOT >WQ
103,250: DRAW 103,210: PLOT 139,170:D
RAW 139,130: PLOT 143,170: DRAW 143,1
30
620 PLOT 499,250,0: DRAW 499,210: PLO >ZB
T 503,250: DRAW 503,210: PLOT 539,170
: DRAW 539,130: PLOT 543,170: DRAW 543
,130
630 a=90:b=450 >PD
640 MOVE 296,320: PLOT 296+5*COS(a), >AE
320+5*SIN(a),0: DRAW 296+5*COS(b),32
0+5*SIN(b):a=a+2:b=b-2
650 IF a=180 AND b=360 THEN 670 >WK
660 GOTO 640 >ZJ
670 FOR a=320 TO 290 STEP -2:PLOT 2 >AC
91,a,0: DRAW 301,a:NEXT
680 a=90:b=450 >PJ
690 MOVE 344,320: PLOT 344+5*COS(a), >AQ
320+5*SIN(a),0: DRAW 344+5*COS(b),32
0+5*SIN(b):a=a+2:b=b-2
700 IF a=180 AND b=360 THEN 720 >WB
710 GOTO 690 >ZK
720 FOR a=320 TO 290 STEP -2:PLOT 3 >AP
39,a,0: DRAW 349,a:NEXT
730 GOSUB 1920 >QD
740 trt1$=CHR$(169)+CHR$(171)+CHR$( >EL
173)+CHR$(32)+CHR$(175)+CHR$(177)+C
HR$(179)+CHR$(181)+CHR$(169)+CHR$(1
73)+CHR$(183)+CHR$(185)+CHR$(181)+C

```



HR\*(32)+CHR\*(186)+CHR\*(188)+CHR\*(18  
1)+CHR\*(169)+CHR\*(190)+CHR\*(173)  
750 trt2\*CHR\*(170)+CHR\*(172)+CHR\*( >BG  
174)+CHR\*(32)+CHR\*(176)+CHR\*(178)+C  
HR\*(180)+CHR\*(182)+CHR\*(170)+CHR\*(1  
74)+CHR\*(184)+CHR\*(32)+CHR\*(182)+CH  
R\*(32)+CHR\*(187)+CHR\*(189)+CHR\*(182  
)+CHR\*(170)+CHR\*(191)+CHR\*(174)  
760 PEN 10:PAPER 0:LOCATE 1,1:PRINT >JU  
trt1\$  
770 LOCATE 1,2:PRINT trt2\$ >VB  
780 PLOT 571,62,1:DRAW 575,62,1:DRAW >CM  
W 583,62,2:DRAW 587,62,1  
790 PLOT 571,60,1:DRAW 575,60,1:DRAW >CE  
W 583,60,2:DRAW 587,60,1  
800 PLOT 567,58,3:DRAW 575,58,3:DRAW >VD  
W 579,58,1:DRAW 591,58,2:DRAW 599,5  
8,1  
810 PLOT 567,56,3:DRAW 575,56,3:DRAW >VU  
W 579,56,1:DRAW 591,56,2:DRAW 599,5  
6,1  
820 PLOT 563,54,3:DRAW 567,54,3:DRAW >CU  
W 575,54,5:DRAW 627,54,3  
830 PLOT 563,52,3:DRAW 567,52,3:DRAW >CL  
W 575,52,5:DRAW 627,52,3  
840 PLOT 559,50,1:DRAW 563,50,1:DRAW >PN  
W 575,50,5:DRAW 587,50,3:DRAW 595,5  
0,4:DRAW 611,50,3  
850 PLOT 559,48,1:DRAW 563,48,1:DRAW >PK  
W 575,48,5:DRAW 587,48,3:DRAW 595,4  
8,4:DRAW 611,48,3  
860 PLOT 623,50,3:DRAW 631,50,3 >XU  
870 PLOT 623,48,3:DRAW 631,48,3 >YB  
880 PLOT 559,46,1:DRAW 563,46,1:DRAW >NP  
W 567,46,5:DRAW 571,46,3:DRAW 575,4  
6,5:DRAW 583,46,1:DRAW 587,46,2:DRAW  
W 595,46,4:DRAW 603,46,1:DRAW 635,4  
6,3  
890 PLOT 559,44,1:DRAW 563,44,1:DRAW >NU  
W 567,44,5:DRAW 571,44,3:DRAW 575,4  
4,5:DRAW 583,44,1:DRAW 587,44,2:DRAW  
W 595,44,4:DRAW 603,44,1:DRAW 635,4  
4,3  
900 PLOT 551,42,4:DRAW 559,42,4:DRAW >FE  
W 563,42,1:DRAW 567,42,5:DRAW 571,4  
2,3:DRAW 575,42,5:DRAW 583,42,1:DRAW  
W 587,42,2:DRAW 591,42,1:DRAW 595,4  
2,4:DRAW 603,42,1:PLOT 619,42,3:DRAW  
W 623,42,3:PLOT 631,42,3:DRAW 639,4  
2,3  
910 PLOT 551,40,4:DRAW 559,40,4:DRAW >EG  
W 563,40,1:DRAW 567,40,5:DRAW 571,4  
0,3:DRAW 575,40,5:DRAW 583,40,1:DRAW  
W 587,40,2:DRAW 591,40,1:DRAW 595,4  
0,4:DRAW 603,40,1:PLOT 619,40,3:DRAW  
W 623,40,3:PLOT 631,40,3:DRAW 639,4  
0,3  
920 PLOT 547,38,4:DRAW 551,38,4:DRAW >ZV  
W 559,38,3:DRAW 571,38,4:DRAW 575,3  
8,5:DRAW 587,38,1:DRAW 591,38,2:DRAW  
W 595,38,1:DRAW 599,38,2:DRAW 603,3  
8,1:PLOT 619,38,3:DRAW 623,38,3  
930 PLOT 547,36,4:DRAW 551,36,4:DRAW >ZV  
W 559,36,3:DRAW 571,36,4:DRAW 575,3  
6,5:DRAW 587,36,1:DRAW 591,36,2:DRAW  
W 595,36,1:DRAW 599,36,2:DRAW 603,3  
6,1:PLOT 619,36,3:DRAW 623,36,3  
940 PLOT 543,34,4:DRAW 583,34,4:DRAW >LC  
W 591,34,1:DRAW 599,34,2:DRAW 603,3  
4,1:PLOT 619,34,3:DRAW 627,34,3  
950 PLOT 543,32,4:DRAW 583,32,4:DRAW >LM  
W 591,32,1:DRAW 599,32,2:DRAW 603,3  
2,1:PLOT 619,32,3:DRAW 627,32,3  
960 PLOT 539,30,4:DRAW 587,30,4:DRAW >LH  
W 595,30,1:DRAW 599,30,2:DRAW 603,3  
0,1:PLOT 623,30,3:DRAW 627,30,3  
970 PLOT 539,28,4:DRAW 587,28,4:DRAW >LM  
W 595,28,1:DRAW 599,28,2:DRAW 603,2  
8,1:PLOT 623,28,3:DRAW 627,28,3  
980 PLOT 535,26,4:DRAW 571,26,4:DRAW >VU  
W 575,26,3:DRAW 587,26,4:DRAW 603,2  
6,1  
990 PLOT 535,24,4:DRAW 571,24,4:DRAW >VJ  
W 575,24,3:DRAW 587,24,4:DRAW 603,2  
4,1  
1000 PLOT 531,22,3:DRAW 547,22,3:DRAW >LY  
AW 559,22,4:DRAW 571,22,3:DRAW 575,  
22,4:DRAW 579,22,3:DRAW 587,22,4:DR  
AW 599,22,1  
1010 PLOT 531,20,3:DRAW 547,20,3:DRAW >LG  
AW 559,20,4:DRAW 571,20,3:DRAW 575,  
20,4:DRAW 579,20,3:DRAW 587,20,4:DR  
AW 599,20,1  
1020 PLOT 531,18,4:DRAW 547,18,4:DRAW >QX  
AW 559,18,3:DRAW 587,18,4:DRAW 595,  
18,1:DRAW 599,18,2  
1030 PLOT 531,16,4:DRAW 547,16,4:DRAW >QK  
AW 559,16,3:DRAW 587,16,4:DRAW 595,  
16,1:DRAW 599,16,2  
1040 PLOT 531,14,4:DRAW 583,14,4:DRAW >CA  
AW 587,14,1:DRAW 591,14,2  
1050 PLOT 531,12,4:DRAW 583,12,4:DRAW >CT  
AW 587,12,1:DRAW 591,12,2  
1060 PLOT 535,10,4:DRAW 579,10,4:DRAW >CW  
AW 583,10,1:DRAW 587,10,2  
1070 PLOT 535,8,4:DRAW 579,8,4:DRAW >YF  
583,8,1:DRAW 587,8,2  
1080 PLOT 539,6,4:DRAW 575,6,4:DRAW >YX  
579,6,1:DRAW 581,6,2  
1090 PLOT 539,4,4:DRAW 575,4,4:DRAW >YP  
579,4,1:DRAW 581,4,2  
1100 PLOT 547,2,4:DRAW 571,2,4:DRAW >JG  
577,2,1  
1110 PLOT 547,0,4:DRAW 571,0,4:DRAW >JB  
577,0,1  
1120 ' >XG  
1130 ' F >XH  
1140 ' >XJ  
1150 PLOT 0,0,1:DRAW 0,45:DRAW 30,4 >ZD  
5:PLOT 8,26:DRAW 20,26  
1160 PLOT 8,0,1:DRAW 8,22:DRAW 22,2 >MH  
2:PLOT 28,41:DRAW 8,41:DRAW 8,26  
1170 PLOT 4,0,2:DRAW 4,43:DRAW 28,4 >AD  
3:PLOT 4,24:DRAW 22,24  
1180 PLOT 0,0,1:DRAW 8,0:DRAW 30,41 >NY  
:DRAW 30,45:PLOT 22,22:DRAW 22,26  
1190 ' >YD  
1200 ' L >XF  
1210 ' >XG  
1220 PLOT 69,0,1:DRAW 39,0:DRAW 39, >DA  
45  
1230 PLOT 69,4:DRAW 47,4:DRAW 47,45 >BZ  
1240 PLOT 69,2,2:DRAW 43,2:DRAW 43, >DX  
45  
1250 PLOT 69,0,1:DRAW 69,4:PLOT 39, >PE  
45:DRAW 47,45  
1260 ' >YB  
1270 ' Y >YC  
1280 ' >YD  
1290 PLOT 71,45,1:DRAW 83,21:DRAW 8 >RH  
3,0:PLOT 91,0:DRAW 91,21:DRAW 102,4  
5  
1300 PLOT 79,45:DRAW 87,25:DRAW 94, >DB  
45  
1310 PLOT 87,0,2:DRAW 87,20:DRAW 75 >DL  
,45:PLOT 87,20:DRAW 98,45  
1320 PLOT 83,0,1:DRAW 91,0:PLOT 71, >TM  
45:DRAW 79,45:PLOT 94,45:DRAW 102,4  
5  
1330 ' >XK  
1340 ' I >YA  
1350 ' >YB  
1360 PLOT 111,0,1:DRAW 141,0:PLOT 1 >PC  
11,4:DRAW 122,4:DRAW 122,41:DRAW 11  
1,41:PLOT 141,4:DRAW 131,4:DRAW 130  
,41:DRAW 141,41:PLOT 111,45:DRAW 14  
1,45  
1370 PLOT 111,2,2:DRAW 141,2:PLOT 1 >XM  
26,2:DRAW 126,43:PLOT 111,43:DRAW 1  
41,43  
1380 PLOT 111,0,1:DRAW 111,4:PLOT 1 >FJ  
41,0:DRAW 141,4:PLOT 111,41:DRAW 11  
1,45:PLOT 141,41:DRAW 141,45  
1390 ' >YF  
1400 ' N >XH  
1410 ' >XJ  
1420 PLOT 149,0,1:DRAW 149,45:DRAW >WG  
159,45:DRAW 169,8:DRAW 169,45:PLOT  
157,0:DRAW 157,37:DRAW 171,0:DRAW 1  
79,0:DRAW 179,45



```
1430 PLOT 153,0,2:DRAW 153,43:DRAW >UJ 372,22:DRAW 388,43:PLOT 370,22:DRAW
175,2:DRAW 175,45 388,43:PLOT 370,22:DRAW 388,2:PLOT
1440 PLOT 149,0,1:DRAW 157,0:PLOT 1 >UN 372,23:DRAW 388,2:PLOT 370,21:DRAW
71,45:DRAW 179,45 388,2:PLOT 386,4:PLOT 386,41:PLOT
1450 ' >YC 380,37,2
1460 ' G >YD 1730 ' >YD
1470 ' >YE 1740 ' E >YE
1480 PLOT 186,0,1:DRAW 186,45:DRAW >PC 1750 ' >YF
216,45:PLOT 186,0:DRAW 216,0:DRAW 2 1760 PLOT 402,0,1:DRAW 432,0:DRAW 4 >QK
16,25:DRAW 204,25 32,4:DRAW 410,4:DRAW 410,20:DRAW 42
1490 PLOT 216,41:DRAW 194,41:DRAW 1 >WK 0,20:DRAW 420,24:DRAW 410,24:DRAW 4
94,4:DRAW 208,4:DRAW 208,21:DRAW 20 10,41:DRAW 432,41:DRAW 432,45:DRAW
4,21 402,45:DRAW 402,0
1500 PLOT 216,43,2:DRAW 190,43:DRAW >YZ 1770 PLOT 428,2,2:DRAW 406,2:DRAW 4 >ZX
190,2:DRAW 212,2:DRAW 212,23:DRAW 06,43:DRAW 428,43:PLOT 406,22:DRAW
204,23 416,22
1510 PLOT 216,41,1:DRAW 216,45:PLOT >WQ 1780 ' >YJ
204,21:DRAW 204,25 1790 ' Y >YK
1520 ' >YA 1800 ' >YB
1530 ' M >YB 1810 PLOT 441,45,1:DRAW 453,21:DRAW >ZH
1540 ' >YC 453,0:PLOT 461,0:DRAW 461,21:DRAW
1550 PLOT 249,0,1:DRAW 249,45:DRAW >QM 472,45
257,45:DRAW 265,24:DRAW 272,45:DRAW 1820 PLOT 449,45:DRAW 457,25:DRAW 4 >GR
280,45:DRAW 280,0 64,45
1560 PLOT 257,0:DRAW 257,41:DRAW 26 >FF 1830 PLOT 457,0,2:DRAW 457,20:DRAW >KP
5,18:DRAW 272,41:DRAW 272,0 445,45:PLOT 457,20:DRAW 468,45
1570 PLOT 253,0,2:DRAW 253,43:DRAW >HV 1840 PLOT 453,0,1:DRAW 461,0:PLOT 4 >ZF
265,22:DRAW 276,43:DRAW 276,0 41,45:DRAW 449,45:PLOT 464,45:DRAW
1580 ' >YG 472,45
1590 ' 0 >YH 1850 ' >YG
1600 ' >XK 1860 ' S >YH
1610 PLOT 288,0,1:DRAW 318,0:DRAW 3 >RT 1870 ' >YJ
18,45:DRAW 288,45:DRAW 288,0:PLOT 2 1880 PLOT 482,0,1:DRAW 512,0:DRAW 5 >RC
96,4:DRAW 310,4:DRAW 310,41:DRAW 29 12,24:DRAW 490,24:DRAW 490,41:DRAW
6,41:DRAW 296,4:PLOT 292,2,2:DRAW 3 512,41:DRAW 512,45:DRAW 482,45:DRAW
14,2:DRAW 314,43:DRAW 292,43:DRAW 2 482,20:DRAW 504,20:DRAW 504,4:DRAW
92,2 482,4:DRAW 482,0
1620 ' >YB 1890 PLOT 486,2,2:DRAW 508,2:DRAW 5 >ZH
1630 ' N >YC 08,22:DRAW 486,22:DRAW 486,43:DRAW
1640 ' >YD 508,43
1650 PLOT 324,0,1:DRAW 324,45:DRAW >VD 1900 SAVE"TMC.SCR",b,&C000,&4000 >ZQ
332,45:DRAW 346,8:DRAW 346,45:PLOT 1910 GOTO 1910 >MK
332,0:DRAW 332,37:DRAW 346,0:DRAW 3 1920 SYMBOL AFTER 169 >QA
54,0:DRAW 354,45 1930 SYMBOL 169,0,126,126,90,90,24, >FQ
1660 PLOT 328,2,2:DRAW 328,43:DRAW >UM 24,24
350,2:DRAW 350,43 1940 SYMBOL 170,24,24,24,24,24,60,6 >DX
1670 PLOT 324,0,1:DRAW 332,0:PLOT 3 >UG 0,0
46,45:DRAW 354,45 1950 SYMBOL 171,0,102,102,102,102,1 >KQ
1680 ' >YH 02,102,126
1690 ' K >YJ 1960 SYMBOL 172,126,102,102,102,102 >KT
1700 ' >YA ,102,102,0
1710 PLOT 362,0,1:DRAW 362,45:DRAW >RL 1970 SYMBOL 173,0,254,254,98,98,104 >YJ
370,45:DRAW 370,25:DRAW 384,45:DRAW ,104,120
392,45:DRAW 376,22:DRAW 392,0:DRAW 1980 SYMBOL 174,120,104,104,98,98,2 >JA
384,0:DRAW 370,19:DRAW 370,0:DRAW 54,254,0
362,0 1990 SYMBOL 175,0,198,198,238,238,2 >LP
1720 PLOT 366,2,2:DRAW 366,43:PLOT >DY 54,254,254
```

```
2000 SYMBOL 176,254,214,214,198,198 >LZ
,198,198,0
2010 SYMBOL 177,0,56,56,108,108,198 >JP
,198,198
2020 SYMBOL 178,198,198,198,108,108 >JR
,56,56,0
2030 SYMBOL 179,0,198,198,230,230,2 >LH
46,246,222
2040 SYMBOL 180,222,206,206,198,198 >LV
,198,198,0
2050 SYMBOL 181,0,60,60,102,102,96, >FC
96,60
2060 SYMBOL 182,60,6,6,102,102,60,6 >DM
0,0
2070 SYMBOL 183,0,252,252,102,102,1 >KY
02,102,124
2080 SYMBOL 184,124,108,108,102,102 >LG
,226,226,0
2090 SYMBOL 185,0,24,24,24,24,48,48 >CX
,0
2100 SYMBOL 186,0,60,60,102,102,192 >JW
,192,192
2110 SYMBOL 187,192,192,192,102,102 >JY
,60,60,0
2120 SYMBOL 188,0,24,24,60,60,102,1 >GY
02,102
2130 SYMBOL 189,102,126,126,102,102 >KX
,102,102,0
2140 SYMBOL 190,0,240,240,96,96,96, >FN
96,96
2150 SYMBOL 191,96,98,98,102,102,25 >HG
4,254,0
2160 RETURN >FC ◆
```

## TMC-PRG

```
10 ' ***** >LA
20 ' ** ** >LB
30 ' ** THE MONSTER'S CASTLE ** >LC
40 ' ** ** ** >LD
50 ' ** BY ** >LE
60 ' ** ** ** >LF
70 ' ** FREDERIC DUPUIS ** >LG
80 ' ** ** ** >LH
90 ' ** AND ** >LJ
100 ' ** ** ** >RB
110 ' ** CYRIL CAUCHOIS ** >RC
120 ' ** ** ** >RD
130 ' ***** >RE
140 KEY DEF 66,0,0,0,0:POKE &BDDEE,& >CB
C9
150 DIM sc(11),nm$(11),lctr$(6) >YY
160 If t$=CHR$(242):rgrt$=CHR$(243):f >GG
ir$=CHR$(32):ps$=CHR$(13)
170 CLS:MODE 1 >UG
```



```
180 SPEED KEY 10,1 >LW 560 ps=r$ >NE IF p=px-2 THEN p=p+2:x=x+2:GOTO 880
190 INK 0,0:INK 1,20:INK 2,2:INK 3, >MF 570 GOTO 170 >ZG ELSE 880
14: BORDER 0 >TD 580 ' >TD 900 IF INKEY(75)=0 THEN x=x+2:dx=1: >HK
200 GOSUB 6020 >PB 590 ' LE CLAVIER >TE dy=1:p=p+2:LOCATE x-2,y:PRINT" ":IF
210 trt1$=CHR$(169)+CHR$(171)+CHR$( >EC 600 ' >RG p=py+2 THEN p=p-2:x=x-2:GOTO 880 E
173)+CHR$(32)+CHR$(175)+CHR$(177)+C >WU LSE 880
HR$(179)+CHR$(181)+CHR$(169)+CHR$(1 >NX 910 IF INKEY(76)=0 THEN GOTO 960 >ZA
73)+CHR$(183)+CHR$(185)+CHR$(181)+C >UD 920 GOTO 880 >AD
HR$(32)+CHR$(186)+CHR$(188)+CHR$(18 >PK 930 ' >TC
1)+CHR$(169)+CHR$(190)+CHR$(173) >YG 940 ' LE JEU >TD
220 trt2$=CHR$(170)+CHR$(172)+CHR$( >BY 660 p=13:pp=24:dx=-1:dy=-1:x=17:y=2 >NX 950 ' >TE
174)+CHR$(32)+CHR$(176)+CHR$(178)+C >NX 3:pw=623 >NX 960 IF jsk=1 THEN 990 >NG
HR$(180)+CHR$(182)+CHR$(170)+CHR$(1 >AC 970 a$=INKEY$:p=p+2*(a$=lft$ AND p) >DP
74)+CHR$(184)+CHR$(32)+CHR$(182)+CH >GK 680 PEN 2:LOCATE 3,1:PRINT "SCORE:" >GK px)-2*(a$=rgt$ AND p<py)
R$(32)+CHR$(187)+CHR$(189)+CHR$(182 >WK 690 PEN 1:PAPER 2:LOCATE x1,y1:PRIN >WK 980 GOTO 1010 >FG
)+CHR$(170)+CHR$(191)+CHR$(174) >WK T CHR$(mv):LOCATE x3,y3:PRINT CHR$( >WK 990 IF INKEY(74)=0 AND p>px THEN p= >EH
230 PEN 2:PAPER 0:LOCATE 10,5:PRINT >JT mv2):PEN 2:PAPER 0 >WK p-2
trt1$ >WU 700 LOCATE p,pp:PEN 2:PRINT" " >FR 1000 IF INKEY(75)=0 AND p<py THEN p >FR
240 LOCATE 10,6:PRINT trt2$ >WU >DE p+2
250 LOCATE 12,10:PEN 1:PRINT "1.KEY >JD 700 LOCATE p,pp:PEN 2:PRINT" " >DE 1010 LOCATE p,pp:PEN 2:PRINT" " >XH
BOARD" >JD INT CHR$(146);:PEN 1:PAPER 2:PRINT >XH RINT CHR$(146);:PEN 1:PAPER 2:PRINT
260 LOCATE 12,12:PEN 1:PRINT "2.JOY >KH CHR$(147)+CHR$(148);:PEN 2:PAPER 0: >XH CHR$(147)+CHR$(148);:PEN 2:PAPER 0
STICK" >KH PRINT CHR$(151);:PRINT" ":LOCATE x >XH :PRINT CHR$(151);:PRINT" "
270 LOCATE 12,14:PEN 1:PRINT "3.RED >QL 710 r$=INKEY$:IF r$="" THEN 710 >XK 1020 IF INKEY$=ps$ THEN 1030 ELSE 1 >DL
EFINE KEYS" >QL 720 IF r$=lft$ THEN x=x-2:dx=-1:dy= >EM -1:p=p-2:LOCATE x+2,y:PRINT" ":IF p >EM
280 LOCATE 12,16:PEN 1:PRINT "4.SEE >TW =px-2 THEN p=p+2:x=x+2:GOTO 700 ELS >EM E 700
HIGH SCORES" >TW 730 IF r$=rgt$ THEN x=x+2:dx=1:dy=1 >BC :p=p+2:LOCATE x-2,y:PRINT" ":IF p=p >BC
290 LOCATE 2,24:PEN 3:PRINT "PROGRA >VM y+2 THEN p=p-2:x=x-2:GOTO 700 ELSE >BC E 700
MMING AND GRAPHICS BY FRED & BOB" >VM 740 IF r$=fir$ THEN GOTO 960 >VC 1050 c=TEST((x+dx)*16-8,408-(y+dy)*16):1 >RT
300 LOCATE 7,25:PRINT "MUSIC ADAPTE >XR 750 GOTO 710 >ZG F c<>0 THEN SOUND 1,200,1:dx=-dx:IF >RT
D BY FRED & BOB" >XR 760 ' >TD c=2 THEN SOUND 1,100,1:pw=pw-5 ELS >RT E IF c=3 THEN SOUND 1,50,1:LOCATE x >RT
310 CLEAR INPUT >LP 770 ' LE JOYSTICK >TE ,y-dy:PRINT" ":sc=sc+10:j=j-1:GOTO >RT
320 r$=INKEY$:IF r$="" THEN 320 >XD 780 ' >TF 1040 ELSE 1040 >TE
330 IF r$="1" THEN GOTO 610 >TX 790 DEFINT a-z:SPEED KEY 1,1 >WD 1060 c=TEST((x+dx)*16-8,408-(y+dy)* >NQ
340 IF r$="2" THEN GOTO 790 >TJ 800 RANDOMIZE TIME >NX 16):IF c<>0 THEN SOUND 1,200,1:dy=- >NQ
350 IF r$="3" THEN GOTO 440 >TC 810 CLS >UD dy:IF c=2 THEN SOUND 1,100,1:pw=pw- >NQ
360 IF r$="4" THEN sc=0:GOTO 2240 >ZT 820 GOSUB 6020 >PK 5 ELSE IF c=3 THEN SOUND 1,50,1:LOC >NQ
370 IF r$=fir$ THEN 610 >QY 830 sc=0 >YG ATE x+dx,y-dy:PRINT" ":sc=sc+10:j=j >NQ
380 IF INKEY(76)=0 THEN 790 >UZ 840 p=13:pp=24:dx=-1:dy=-1:x=17:y=2 >NX -1:GOTO 1040 ELSE 1040 >NQ
390 IF INKEY(64)=0 THEN 610 >UM 850 lf=3:lvl=0:jsk=1:GOSUB 2050 >AD 1070 IF jsk=1 THEN 1100 >QN
400 IF INKEY(65)=0 THEN 790 >UP 860 PEN 2:LOCATE 3,1:PRINT "SCORE:" >GK 1080 a$=INKEY$:p=p+2*(a$=lft$ AND p >EK
410 IF INKEY(57)=0 THEN 440 >UH 870 PEN 1:PAPER 2:LOCATE x1,y1:PRIN >WK >px)-2*(a$=rgt$ AND p<py) >EK
420 IF INKEY(56)=0 THEN sc=0:GOTO 2 >EQ 880 LOCATE p,pp:PEN 2:PRINT" " >DP 1100 IF INKEY(74)=0 AND p>px THEN p >FV
240 >EQ 890 LOCATE p,pp:PEN 2:PRINT" " >DP =p-2 >FV
430 GOTO 320 >YJ 890 LOCATE p,pp:PEN 2:PRINT" " >DP 1110 IF INKEY(75)=0 AND p<py THEN p >FU
440 SPEED KEY 100,100 >NZ 900 IF INKEY(74)=0 THEN x=x-2:dx=-1 >LV =p+2 >FU
450 CLS:LOCATE 12,12:PRINT"LEFT" >BE 910 INT CHR$(146);:PEN 1:PAPER 2:PRINT >XK 1120 LOCATE p,pp:PEN 2:PRINT" " >XK
460 r$=INKEY$:IF r$="" THEN 460 >XP PRINT CHR$(147)+CHR$(148);:PEN 2:PAPER 0: >XK RINT CHR$(146);:PEN 1:PAPER 2:PRINT
470 lft$=r$ >XC 920 CLS >YB PRINT CHR$(151);:PRINT" ":LOCATE x >XK CHR$(147)+CHR$(148);:PEN 2:PAPER 0
480 LOCATE 12,12:PRINT"RIGHT" >YU 930 sc=0 >YE ,y:PRINT CHR$(145) >XK :PRINT CHR$(151);:PRINT" " >XK
490 r$=INKEY$:IF r$="" THEN 490 >XW 840 p=13:pp=24:dx=-1:dy=-1:x=17:y=2 >NX 1130 IF INKEY$=ps$ THEN 1140 ELSE 1 >DT
500 rgt$=r$ >XD 850 lf=3:lvl=0:jsk=1:GOSUB 2050 >AD 1140 ELSE 1 >DT
510 LOCATE 12,12:PRINT"FIRE " >YB 860 PEN 2:LOCATE 3,1:PRINT "SCORE:" >GK 1140 ELSE 1 >DT
520 r$=INKEY$:IF r$="" THEN 520 >XH 870 PEN 1:PAPER 2:LOCATE x1,y1:PRIN >WK 1140 ELSE 1 >DT
530 fir$=r$ >WE 880 LOCATE p,pp:PEN 2:PRINT" " >DP 1140 ELSE 1 >DT
540 LOCATE 12,12:PRINT"PAUSED" >ZN 890 LOCATE p,pp:PEN 2:PRINT" " >DP 1140 ELSE 1 >DT
550 r$=INKEY$:IF r$="" THEN 550 >XP 900 IF INKEY(74)=0 THEN x=x-2:dx=-1 >LV 1140 ELSE 1 >DT
910 INT CHR$(146);:PEN 1:PAPER 2:PRINT >XK 1140 ELSE 1 >DT
920 CLS >YB PRINT CHR$(147)+CHR$(148);:PEN 2:PAPER 0: >XK 1140 ELSE 1 >DT
930 sc=0 >YE ,y:PRINT CHR$(145) >XK :PRINT CHR$(151);:PRINT" " >XK 1140 ELSE 1 >DT
940 ' LE JEU >TD 840 p=13:pp=24:dx=-1:dy=-1:x=17:y=2 >NX 1140 ELSE 1 >DT
950 ' >TE 850 lf=3:lvl=0:jsk=1:GOSUB 2050 >AD 1140 ELSE 1 >DT
960 IF jsk=1 THEN 990 >NG 860 PEN 2:LOCATE 3,1:PRINT "SCORE:" >GK 1140 ELSE 1 >DT
970 a$=INKEY$:p=p+2*(a$=lft$ AND p) >DP 870 PEN 1:PAPER 2:LOCATE x1,y1:PRIN >WK 1140 ELSE 1 >DT
980 GOTO 1010 >FG 880 LOCATE p,pp:PEN 2:PRINT" " >DP 880 LOCATE p,pp:PEN 2:PRINT" " >DP 1140 ELSE 1 >DT
990 IF INKEY(74)=0 AND p>px THEN p= >EH 890 LOCATE p,pp:PEN 2:PRINT" " >DP 890 LOCATE p,pp:PEN 2:PRINT" " >DP 1140 ELSE 1 >DT
1000 IF INKEY(75)=0 AND p<py THEN p >FR 900 IF INKEY(75)=0 THEN x=x+2:dx=1: >HK 900 IF INKEY(75)=0 THEN x=x+2:dx=1: >HK
1010 LOCATE p,pp:PEN 2:PRINT" " >XH 910 IF INKEY(76)=0 THEN GOTO 960 >ZA 910 IF INKEY(76)=0 THEN GOTO 960 >ZA
1020 IF INKEY$=ps$ THEN 1030 ELSE 1 >DL 920 GOTO 880 >AD 920 GOTO 880 >AD
1030 LOCATE x,y:PRINT CHR$(145):IF >HX 930 ' >TC 930 ' >TC
1040 c=TEST((x+dx)*16-8,408-(y+dy)*16):1 >XZ 940 ' LE JEU >TD 940 ' LE JEU >TD
1040 c=TEST((x+dx)*16-8,408-(y+dy)*16):1 >RT 950 ' >TE 950 ' >TE
1050 c=TEST((x+dx)*16-8,408-(y+dy)*16):1 >RT 960 IF jsk=1 THEN 990 >NG 960 IF jsk=1 THEN 990 >NG
1060 c=TEST((x+dx)*16-8,408-(y+dy)*16):1 >NQ 970 a$=INKEY$:p=p+2*(a$=lft$ AND p) >DP 970 a$=INKEY$:p=p+2*(a$=lft$ AND p) >DP
1070 IF jsk=1 THEN 1100 >QN 980 GOTO 1010 >FG 980 GOTO 1010 >FG
1080 a$=INKEY$:p=p+2*(a$=lft$ AND p) >EK 990 IF INKEY(74)=0 AND p>px THEN p >EH 990 IF INKEY(74)=0 AND p>px THEN p >EH
1090 GOTO 1120 >MB 1000 IF INKEY(75)=0 AND p<py THEN p >FR 1000 IF INKEY(75)=0 AND p<py THEN p >FR
1100 IF INKEY(74)=0 AND p>px THEN p >FV 1010 LOCATE p,pp:PEN 2:PRINT" " >XH 1010 LOCATE p,pp:PEN 2:PRINT" " >XH
1110 IF INKEY(75)=0 AND p<py THEN p >FU 1020 IF INKEY$=ps$ THEN 1030 ELSE 1 >DL 1020 IF INKEY$=ps$ THEN 1030 ELSE 1 >DL
1120 LOCATE p,pp:PEN 2:PRINT" " >XK 1030 LOCATE x,y:PRINT CHR$(145):IF >HX 1030 LOCATE x,y:PRINT CHR$(145):IF >HX
1130 IF INKEY$=ps$ THEN 1140 ELSE 1 >DT 1040 c=TEST((x+dx)*16-8,408-(y+dy)*16):1 >XZ 1040 c=TEST((x+dx)*16-8,408-(y+dy)*16):1 >XZ
1140 ELSE 1 >DT 1050 c=TEST((x+dx)*16-8,408-(y+dy)*16):1 >RT 1050 c=TEST((x+dx)*16-8,408-(y+dy)*16):1 >RT
1140 ELSE 1 >DT 1060 c=TEST((x+dx)*16-8,408-(y+dy)*16):1 >NQ 1060 c=TEST((x+dx)*16-8,408-(y+dy)*16):1 >NQ
1140 ELSE 1 >DT 1070 IF jsk=1 THEN 1100 >QN 1070 IF jsk=1 THEN 1100 >QN
1140 ELSE 1 >DT 1080 a$=INKEY$:p=p+2*(a$=lft$ AND p) >EK 1080 a$=INKEY$:p=p+2*(a$=lft$ AND p) >EK
1140 ELSE 1 >DT 1090 GOTO 1120 >MB 1090 GOTO 1120 >MB
1140 ELSE 1 >DT 1100 IF INKEY(74)=0 AND p>px THEN p >FV 1100 IF INKEY(74)=0 AND p>px THEN p >FV
1140 ELSE 1 >DT 1110 IF INKEY(75)=0 AND p<py THEN p >FU 1110 IF INKEY(75)=0 AND p<py THEN p >FU
1140 ELSE 1 >DT 1120 LOCATE p,pp:PEN 2:PRINT" " >XK 1120 LOCATE p,pp:PEN 2:PRINT" " >XK
1140 ELSE 1 >DT 1130 IF INKEY$=ps$ THEN 1140 ELSE 1 >DT 1130 IF INKEY$=ps$ THEN 1140 ELSE 1 >DT
1140 ELSE 1 >DT 1140 ELSE 1 >DT 1140 ELSE 1 >DT
```



```
150
1140 LOCATE x,y:PRINT CHR$(145):IF >HD
INKEY$="" THEN 1140 ELSE 1150
1150 LOCATE x,y:PRINT " " >TG
1160 IF j=0 THEN GOTO 1960 >TQ
1170 x1=x1+x2:IF x1=xy1 THEN x1=xy1 >RQ
-2*x2:x2=-x2
1180 IF x1=xy2 THEN x1=xy2-2*x2:x2= >GG
-x2
1190 LOCATE x1-x2,y1:PRINT " ":LOCA >RQ
TE x1,y1:PEN 1:PAPER 2:PRINT CHR$(#
v):PEN 2:PAPER 0
1200 x3=x3+x4:IF x3=xy3 THEN x3=xy3 >RF
-2*x4:x4=-x4
1210 IF x3=xy4 THEN x3=xy4-2*x4:x4= >GQ
-x4
1220 LOCATE x3-x4,y3:PRINT " ":LOCA >TH
TE x3,y3:PEN 1:PAPER 2:PRINT CHR$(#
v2):PEN 2:PAPER 0
1230 x=x+dx:y=y+dy >NF
1240 PLOT 623,326,0:DRAW pw,326 >YA
1250 IF pw=523 THEN 1310 >QJ
1260 IF y>24 THEN 1310 >PG
1270 IF y<3 THEN 2050 >NP
1280 LOCATE x,y:PRINT CHR$(145) >ZZ
1290 PEN 2:LOCATE 3,1:PRINT "SCORE: >HP
";sc
1300 GOTO 960 >FE
1310 ' >XH
1320 ' PERDU >XJ
1330 ' >XK
1340 If=If-1 >DA
1350 IF If=-1 THEN 1370 >PN
1360 GOTO 1380 >MK
1370 LOCATE 33,1:PRINT"LIFE: 0":GOT >JB
0 1390
1380 LOCATE 33,1:PRINT"LIFE: ";If >BB
1390 LOCATE p+1,pp:PEN 2:PRINT " "; >ZE
:PRINT CHR$(146);:PEN 1:PAPER 2:PRI
NT CHR$(147)+CHR$(148);:PEN 2:PAPER
0:PRINT CHR$(151);:PRINT " "
1400 IF If=-1 THEN GOTO 2130 >UZ
1410 PLOT 523,326,2:DRAW 623,326:pw >XB
=623:x=p+4:y=pp-1
1420 IF jsk=0 THEN 680 >PF
1430 GOTO 860 >FH
1440 ' >YB
1450 ' TABLEAU PERMANENT >YC
1460 ' >YD
1470 MODE 1:INK 0,0:INK 1,13:INK 2, >MZ
26:INK 3,6:BORDER 0:PEN 2:PAPER 0
1480 IF nf=1 THEN 1550 >PY
1490 nf=1 >EE
1500 OPENIN "RECORD.DAT" >UT
1510 FOR k=1 TO 10 >LD
1520 INPUT #9,sc(k),nm$(k) >UZ
1530 NEXT k >VG
1540 CLOSEIN >MA
1550 LOCATE 17,1:PRINT "HISCORE: ";s >JP
c(10)
1560 LOCATE 33,1:PRINT "LIFE: ";If >BM
1570 FOR k=2 TO 31 >LP
1580 PAPER 1:PEN 2:LOCATE k,2:PRINT >NB
CHR$(149)
1590 NEXT >LG
1600 FOR k=2 TO 23 >LJ
1610 LOCATE 2,k:PRINT CHR$(149) >ZU
1620 NEXT >LA
1630 FOR k=2 TO 23 >LM
1640 LOCATE 31,k:PRINT CHR$(149) >AB
1650 NEXT >LD
1660 LOCATE 13,2:PEN 2:PAPER 1:PRIN >MQ
T CHR$(211);"CLOSED";CHR$(209)
1670 PAPER 0:PEN 2:LOCATE 34,4:PRIN >MA
T"POWER"
1680 trt3#=CHR$(169)+CHR$(171)+CHR$ >CP
(173):trt4#=CHR$(170)+CHR$(172)+CHR
$(174)
1690 trt5#=CHR$(175)+CHR$(177)+CHR$ >NH
(179)+CHR$(181)+CHR$(169)+CHR$(173)
+CHR$(183)+CHR$(185)+CHR$(181)
1700 trt6#=CHR$(176)+CHR$(178)+CHR$ >LL
(180)+CHR$(182)+CHR$(170)+CHR$(174)
+CHR$(184)+CHR$(32)+CHR$(182)
1710 trt7#=CHR$(186)+CHR$(188)+CHR$ >TA
(181)+CHR$(169)+CHR$(190)+CHR$(173)
1720 trt8#=CHR$(187)+CHR$(189)+CHR$ >TZ
(182)+CHR$(170)+CHR$(191)+CHR$(174)
1730 LOCATE 35,7:PRINT trt3#:LOCATE >XW
35,8:PRINT trt4#
1740 LOCATE 32,10:PRINT trt5#:LOCAT >ZF
E 32,11:PRINT trt6#
1750 LOCATE 33,13:PRINT trt7#:LOCAT >ZV
E 33,14:PRINT trt8#
1760 PLOT 518,328,3:DRAW 622,328:PL >DE
OT 514,326:DRAW 518,326:PLOT 518,32
4:DRAW 622,324:PLOT 622,326:DRAW 62
6,326:PLOT 523,326,2:DRAW 623,326
1770 LOCATE 33,21:PRINT CHR$(164);" >KT
1990":LOCATE 33,22:PRINT"FLYING":LO
CATE 33,23:PRINT"MONKEYS"
1780 IF sc=0 THEN 2710 >PB
1790 IF sc=400 THEN 2780 >QG
1800 IF sc=820 THEN 2910 >QZ
1810 IF sc=1280 THEN 3060 >RR
1820 IF sc=1640 THEN 3290 >RY
1830 IF sc=2120 THEN 3520 >RN
1840 IF sc=2840 THEN 3680 >RG
1850 IF sc=3200 THEN 3790 >RA
1860 IF sc=3760 THEN 3970 >RN
1870 IF sc=4240 THEN 4190 >RC
1880 IF sc=4600 THEN 4420 >RZ
1890 IF sc=4990 THEN 4610 >RP
1900 IF sc=5430 THEN 4910 >RY
1910 IF sc=5960 THEN 5250 >RF
1920 IF sc=6440 THEN 5460 >RD
1930 ' >YF
1940 ' OUVERTURE >YG
1950 ' >YH
1960 so=225:j=-1 >LC
1970 FOR k=20 TO 13 STEP -1 >TN
1980 LOCATE k,2:PAPER 0:PRINT" ":SO >PN
UND 1,so,1
1990 so=so-25 >QA
2000 NEXT >KD
2010 GOTO 960 >FD
2020 ' >XG
2030 ' LEVEL >XH
2040 ' >XJ
2050 CLS:INK 0,0:INK 1,13:INK 2,26: >JJ
INK 3,6:BORDER 0:PEN 2:PAPER 0
2060 IF sc=7380 THEN 5790 >RK
2070 lvl=lvl+1:LOCATE 16,12:PRINT"L >QL
EVEL";lvl
2080 FOR tm=1 TO 2500:NEXT >UD
2090 GOSUB 1470 >XK
2100 IF jsk=0 THEN GOTO 680 >UR
2110 IF jsk=1 THEN GOTO 860 >UU
2120 ' >XH
2130 ' GAME OVER >XJ
2140 ' >XK
2150 SPEED KEY 10,5:PEN 2:LOCATE 14 >UJ
,11:PRINT" "
2160 LOCATE 14,12:PRINT" GAME " >ZL
2170 LOCATE 14,13:PRINT" OVER " >ZA
2180 LOCATE 14,14:PRINT" " >XQ
2190 CLEAR INPUT >LQ
2200 IF INKEY$=fir# THEN 2240 >WR
2210 IF INKEY(76)=0 THEN 2240 >WD
2220 GOTO 2200 >LH
2230 ' >XK
2240 ' TABLEAU DES SCORES >YA
2250 ' >YB
2260 IF nf=1 THEN 2330 >PR
2270 nf=1 >EB
2280 OPENIN "RECORD.DAT" >UZ
2290 FOR k=1 TO 10 >LK
2300 INPUT #9,sc(k),nm$(k) >UW
2310 NEXT k >VD
2320 CLOSEIN >LH
2330 IF sc=<sc(1) THEN 2570 >UE
2340 INK 0,0:INK 1,20:INK 2,2:INK 3 >LP
,14:BORDER 0:CLS:PEN 3:LOCATE 10,12
:PRINT"ENTER YOUR NAME : ";
2350 SPEED KEY 10,5 >HM
2360 FOR n=1 TO 6 >CK
2370 CLEAR INPUT >LQ
2380 r$=INKEY$:IF r$="" THEN 2380 >ZZ
2390 letr$(n)=r$ >LZ
```



2400 PRINT letr\$(n);	>PJ	PAPER 1:PRINT STRING\$(3,149);CHR\$(1	NG\$(2,152);STRING\$(2,149)
2410 NEXT n	>VH	52)	2970 PEN 2:PAPER 1:LOCATE 2,24:PRIN >VP
2420 nm\$=letr\$(1)+letr\$(2)+letr\$(3)	>JA	2800 FOR k=6 TO 16:LOCATE 13,k:PRIN >KJ	T CHR\$(149):LOCATE 31,24:PRINT CHR\$(
+letr\$(4)+letr\$(5)+letr\$(6)		T CHR\$(149):NEXT:FOR k=6 TO 16:LOCA	(149):PEN 1:PAPER 0:LOCATE 3,23:PRIN
2430 FOR s=10 TO 1 STEP -1	>RN	TE 20,k:PRINT CHR\$(149):NEXT	T CHR\$(143);CHR\$(192):LOCATE 29,23
2440 IF sc(sc(s) THEN 2560	>TH	2810 PEN 3:PAPER 2:FOR k=8 TO 11:LO >BC	:PRINT CHR\$(193);CHR\$(143)
2450 FOR v=2 TO s	>GH	CATE 6,k:PRINT STRING\$(4,150):NEXT:	2980 PEN 2:PAPER 1:LOCATE 2,25:PRIN >UX
2460 sc(v-1)=sc(v):nm\$(v-1)=nm\$(v)	>CN	FOR k=8 TO 11:LOCATE 24,k:PRINT STR	T CHR\$(149):LOCATE 6,25:PRINT STRIN
2470 NEXT v	>XB	ING\$(4,150):NEXT	G\$(6,152):LOCATE 22,25:PRINT STRING
2480 sc(s)=sc:nm\$(s)=nm\$	>TZ	2820 FOR k=8 TO 9:LOCATE 16,k:PRINT >DB	\$(6,152):LOCATE 31,25:PRINT CHR\$(14
2490 OPENOUT "RECORD.BAS"	>VX	STRING\$(2,150):NEXT:FOR k=12 TO 13	9)
2500 FOR k=1 TO 10	>LD	:LOCATE 16,k:PRINT STRING\$(2,150):N	2990 lf=lf+1:PEN 2:PAPER 0:LOCATE 3 >AK
2510 WRITE #9,sc(k),nm\$(k)	>UU	EXT	3,1:PRINT "LIFE:";lf
2520 NEXT k	>VG	2830 PEN 2:PAPER 1:LOCATE 2,25:PRIN >UQ	3000 pw=623:lf=lf+1:pp=24:px=3:py=2 >AD
2530 CLOSEOUT	>ZA	T CHR\$(149):LOCATE 6,25:PRINT STRIN	3:j=46:x1=3:xy1=16:xy2=2:x2=1:y1=13
2540 ÷ERA,"RECORD.BAK"	>TC	G\$(6,152):LOCATE 22,25:PRINT STRING	:mv=150:x3=30:xy3=31:xy4=17:x4=-1:y
2550 GOTO 2570	>ND	\$(6,152):LOCATE 31,25:PRINT CHR\$(14	3=13:mv2=150:x=p+4:y=23
2560 NEXT s	>WJ	9)	3010 PEN 2:PAPER 0
2570 INK 0,0:INK 1,20:INK 2,2:INK 3	>RE	2840 PEN 1:PAPER 0:LOCATE 3,23:PRIN >FJ	3020 RETURN
,14: BORDER 0:CLS:PEN 2:LOCATE 13,8:		T CHR\$(143);CHR\$(192):LOCATE 29,23:	>EJ
PRINT "SCORE NAME":PEN 3:PRINT		PRINT CHR\$(193);CHR\$(143)	3030 '
2580 FOR t=10 TO 1 STEP -1	>RW	2850 pp=24:px=3:py=23:j=42:x1=14:xy >XK	3040 ' TABLEAU 4
2590 PRINT TAB(13)sc(t);TAB(20)nm\$(	>FN	1=20:xy2=13:x2=1:y1=16:mv=150:x3=30	>YA
t)		:xy3=31:xy4=2:x4=-1:y3=21:mv2=150:x	3060 PEN 2:PAPER 1:LOCATE 3,5:PRINT >MD
2600 NEXT t	>WE	=p+4:y=23	STRING\$(3,149):LOCATE 28,5:PRINT S
2610 PLOT 176,304,1:DRAW 176,80:DRA	>PZ	2860 PEN 2:PAPER 0	TRING\$(3,149):LOCATE 3,18:PRINT STR
W 416,80:DRAW 416,304:DRAW 176,304		2870 RETURN	ING\$(3,149)
2620 CLEAR INPUT	>LN	2880 '	NG\$(3,149)
2630 IF INKEY\$=fir\$ THEN 2670	>WG	2890 ' TABLEAU 3	3070 FOR k=11 TO 12:PEN 3:PAPER 2:L >JP
2640 IF INKEY(76)=0 THEN 2670	>WU	2900 '	OCATE 15,k:PRINT CHR\$(150):PEN 2:P
2650 IF INKEY\$=CHR\$(32) THEN 2670	>ZE	2910 FOR k=6 TO 8:LOCATE 6,k:PEN 3:	APER 1:PRINT STRING\$(2,149):PEN 3:
2660 GOTO 2630	>NC	PAPER 2:PRINT STRING\$(3,150):NEXT:F	PAPER 2:PRINT CHR\$(150):NEXT:LOCATE
2670 CLS:MODE 1:SPEED KEY 10,1:GOTO	>FM	OR k=6 TO 8:LOCATE 25,k:PEN 3:PAPER	16,10:PRINT STRING\$(2,150):LOCATE
230		2:PRINT STRING\$(3,150):NEXT	16,13:PRINT STRING\$(2,150)
2680 '	>YJ	2920 FOR k=6 TO 7:PEN 3:PAPER 2:LOC >YH	3080 PEN 1:PAPER 0:LOCATE 3,23:PRIN >FF
2690 ' TABLEAU 1	>YK	ATE 15,k:PRINT CHR\$(150):PEN 2:PA	T CHR\$(143);CHR\$(192):LOCATE 29,23:
2700 '	>YB	PER 1:PRINT STRING\$(2,149):PEN 3:PA	PRINT CHR\$(193);CHR\$(143)
2710 FOR k=8 TO 11:LOCATE 12,k:PEN	>RN	PER 2:PRINT CHR\$(150):NEXT:LOCATE 1	3090 k=10:k1=11
3:PAPER 2:PRINT STRING\$(10,150):NEX		6,5:PRINT STRING\$(2,150):LOCATE 16,	>XD
T:PEN 2:PAPER 1:LOCATE 12,5:PRINT S		8:PRINT STRING\$(2,150)	>LG
TRING\$(10,149):LOCATE 12,14:PRINT S		2930 PEN 2:PAPER 1:LOCATE 16,13:PRI >WQ	3100 PEN 3:PAPER 2
TRING\$(4,149);STRING\$(2,152);STRING		NT STRING\$(2,152)	>LC
\$(4,149)		2940 FOR k=17 TO 18:PEN 3:PAPER 2:L >BL	3110 LOCATE k,k1:PRINT CHR\$(150):LO >LC
2720 px=1:py=25:j=40:x1=3:xy1=12:xy	>NH	OCATE 5,k:PRINT CHR\$(150):PEN 2:PA	CATE k+7,k1+7:PRINT CHR\$(150)
2=2:x2=1:y1=11:mv=150:x3=30:xy3=31:		PER 1:PRINT STRING\$(2,149):PEN 3:P	3120 k=k+1:k1=k1-1
xy4=21:x4=-1:y3=11:mv2=150		APER 2:PRINT CHR\$(150):NEXT:LOCATE	>MF
2730 PEN 2:PAPER 0	>MD	6,16:PRINT STRING\$(2,150):LOCATE 6,	3130 IF k=17 THEN 3150
2740 RETURN	>FG	19:PRINT STRING\$(2,150)	>ND
2750 '	>YG	2950 FOR k=17 TO 18:PEN 3:PAPER 2:L >JA	3140 GOTO 3110
2760 ' TABLEAU 2	>YH	OCATE 25,k:PRINT CHR\$(150):PEN 2:P	>MA
2770 '	>YJ	APER 1:PRINT STRING\$(2,149):PEN 3:	3150 k=17:k1=5
2780 LOCATE 2,24:PEN 2:PAPER 1:PRIN	>AN	PAPER 2:PRINT CHR\$(150):NEXT:LOCATE	>QH
T CHR\$(149):LOCATE 31,24:PRINT CHR\$(		26,16:PRINT STRING\$(2,150):LOCATE	>ME
149)		26,19:PRINT STRING\$(2,150)	3170 LOCATE k,k1:PRINT CHR\$(150):LO >LL
2790 PEN 2:PAPER 1:LOCATE 12,5:PRIN	>VV	2960 PEN 3:PAPER 2:LOCATE 15,18:PRI >XB	CATE k-7,k1+7:PRINT CHR\$(150)
T CHR\$(152);STRING\$(3,149):PEN 3:P		NT STRING\$(4,150):PEN 2:PAPER 1:LOC	3180 k=k+1:k1=k1+1
APER 2:PRINT STRING\$(2,150):PEN 2:		ATE 14,19:PRINT STRING\$(2,149);STRI	>MK



```
3230 pp=24:px=3:py=23:j=36:x1=3:xy1 >VQ 3530 FOR k=7 TO 18:LOCATE 9,k:PRINT >UM 1=3:xy1=31:xy2=2:x2=1:y1=15:mv=150:
=10:xy2=2:x2=1:y1=12:mv=150:x3=30:x CHR$(150):NEXT x3=30:xy3=31:xy4=2:x4=-1:y3=9:mv2=1
y3=31:xy4=23:x4=-1:y3=12:mv2=150:x= 3540 FOR k=7 TO 18:LOCATE 12,k:PRIN >VE 50:x=p+4:y=23
p+4:y=23 T CHR$(150):NEXT 3740 PEN 2:PAPER 0 >MF
3240 PEN 2:PAPER 0 >MA 3550 FOR k=7 TO 18:LOCATE 21,k:PRIN >VF 3750 RETURN >FJ
3250 RETURN >FD T CHR$(150):NEXT 3760 ' >YJ
3260 ' >YD 3560 FOR k=7 TO 18:LOCATE 24,k:PRIN >VK 3770 ' TABLEAU 8 >YK
3270 ' TABLEAU 5 >YE T CHR$(150):NEXT 3780 ' >ZA
3280 ' >YF 3570 FOR k=7 TO 18:LOCATE 27,k:PRIN >VP 3790 PEN 3:PAPER 2:k=3:l=8 >UX
3290 PEN 2:PAPER 1:LOCATE 11,6:PRIN >PP T CHR$(150):NEXT 3800 k=k+2:l=l+1:LOCATE k,l:PRINT S >ZB
T STRING$(3,149):LOCATE 20,6:PRINT TRING$(2,150):IF k=13 THEN 3810 ELS
STRING$(3,149):LOCATE 3,16:PRINT ST E 3800
RING$(4,149):LOCATE 27,16:PRINT STR 3810 k=17:l=14 >RA
ING$(4,149) 3590 LOCATE 6,19:PRINT STRING$(7,14 >XQ 3820 k=k+2:l=l-1:LOCATE k,l:PRINT S >ZQ
) 9):LOCATE 21,19:PRINT STRING$(7,149 TRING$(2,150):IF k=27 THEN 3830 ELS
) E 3820
3600 PEN 1:PAPER 0:LOCATE 3,23:PRIN >EC 3830 PEN 2:PAPER 1:LOCATE 16,18:PRI >WM
T CHR$(143)+CHR$(192):LOCATE 29,23: NT STRING$(2,152)
PRINT CHR$(193)+CHR$(143) 3840 PEN 3:PAPER 2:LOCATE 9,7:PRINT >VE
3610 PEN 2:PAPER 1:LOCATE 2,25:PRIN >DW STRING$(16,150)
T CHR$(149):LOCATE 6,25:PRINT STRIN 3850 LOCATE 11,8:PRINT STRING$(12,1 >FQ
G$(6,152):LOCATE 22,25:PRINT STRING 50)
$(6,152):LOCATE 31,25:PRINT CHR$(14 3860 LOCATE 13,9:PRINT STRING$(8,15 >FG
9):LOCATE 2,24:PRINT CHR$(149):LOCA 0)
TE 31,24:PRINT CHR$(149) 3870 PEN 2:PAPER 1:LOCATE 15,10:PRI >WZ
3620 lf=l+1:pp=24:px=3:py=23:j=72: >MU NT STRING$(4,149)
x1=20:xy1=21:xy2=12:x2=-1:y1=6:mv=1 3880 LOCATE 15,14:PRINT STRING$(4,1 >FD
50:x3=13:xy3=21:xy4=12:x4=1:y3=19:m v2=150:x=p+4:y=23 49)
3630 PEN 2:PAPER 0 >MD 3890 PEN 1:PAPER 0:LOCATE 3,23:PRIN >FF
3640 RETURN >FG T CHR$(143)+CHR$(192):LOCATE 29,23:
3650 ' >YG PRINT CHR$(193)+CHR$(143)
3660 ' TABLEAU 7 >YH 3900 PEN 2:PAPER 1:LOCATE 2,25:PRIN >DY
3670 ' >YJ T CHR$(149):LOCATE 6,25:PRINT STRIN
3680 PEN 2:PAPER 1:LOCATE 3,6:PRINT >HJ G$(6,152):LOCATE 22,25:PRINT STRING
STRING$(12,149);:PEN 3:PAPER 2:PRI NT STRING$(4,150);:PEN 2:PAPER 1:PR INT STRING$(12,149)
3690 PEN 3:PAPER 2:LOCATE 3,12:PRIN >YL T STRING$(11,150);:PEN 2:PAPER 1:PR INT STRING$(2,149);STRING$(2,152);S TRING$(2,149);:PEN 3:PAPER 2:PRINT STRING$(11,150)
3700 PEN 2:PAPER 1:LOCATE 3,18:PRIN >JB T STRING$(11,149);:PEN 3:PAPER 2:PR INT STRING$(6,150);:PEN 2:PAPER 1:P RINT STRING$(11,149)
3710 PEN 1:PAPER 0:LOCATE 3,23:PRIN >EE T CHR$(143)+CHR$(192):LOCATE 29,23:
PRINT CHR$(193)+CHR$(143) 3720 PEN 2:PAPER 1:LOCATE 2,25:PRIN >DY T CHR$(149):LOCATE 6,25:PRINT STRIN
G$(6,152):LOCATE 22,25:PRINT STRIN G$(6,152):LOCATE 31,25:PRINT CHR$(14 9):LOCATE 2,24:PRINT CHR$(149):LOCA TE 31,24:PRINT CHR$(149)
3730 pv=623:pp=24:px=3:py=23:j=36:x >EH 4000 LOCATE 11,5:PRINT STRING$(3,15 >EP
0)
4010 LOCATE 9,7:PRINT STRING$(7,150 >EN
```





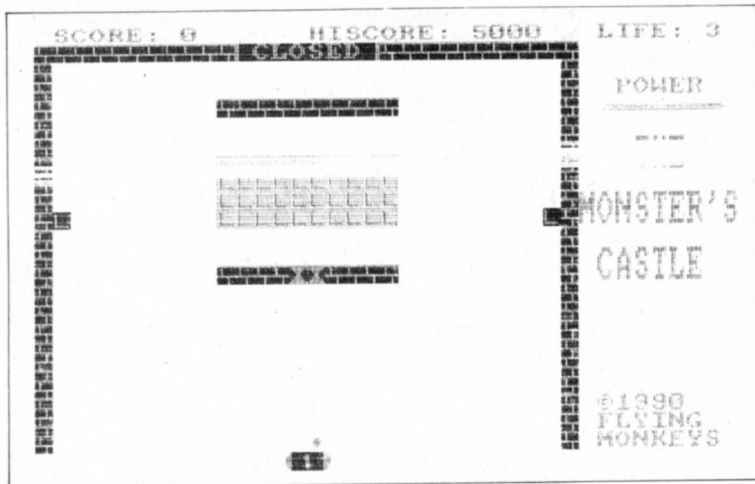
```
)
4020 LOCATE 8,9:PRINT STRING$(9,150 >ET
)
4030 LOCATE 9,11:PRINT STRING$(7,15 >EB
0)
4040 LOCATE 11,13:PRINT STRING$(3,1 >FB
50)
4050 PEN 2:PAPER 1:LOCATE 12,17:PRI >PR
NT CHR$(152)
4060 LOCATE 12,20:PRINT CHR$(152) >AC
4070 FOR k=18 TO 19:LOCATE 12,k:PRI >WL
NT CHR$(149):NEXT
4080 LOCATE 20,16:PRINT STRING$(3,1 >FT
49)
4090 FOR k=17 TO 19:LOCATE 19,k:PRI >CU
NT STRING$(5,149):NEXT
4100 LOCATE 20,20:PRINT STRING$(3,1 >FE
49)
4110 PEN 1:PAPER 0:LOCATE 3,23:PRIN >EZ
T CHR$(143)+CHR$(192):LOCATE 29,23:
PRINT CHR$(193)+CHR$(143)
4120 PEN 2:PAPER 1:LOCATE 2,25:PRIN >DT
T CHR$(149):LOCATE 6,25:PRINT STRIN
G$(6,152):LOCATE 22,25:PRINT STRING
$(6,152):LOCATE 31,25:PRINT CHR$(14
9):LOCATE 2,24:PRINT CHR$(149):LOCA
TE 31,24:PRINT CHR$(149)
4130 pw=623:lf=lf+1:pp=24:px=3:py=2 >EA
3:j=48:x=13:xy1=19:xy2=12:x2=1:y1=
18:mv=150:x3=30:xy3=31:xy4=23:x4= 1
:y3=18:mv2=150:xp=4:y=23
4140 PEN 2:PAPER 0 >MA
4150 RETURN >FD
4160 ' >YD
4170 ' TABLEAU 10 >YE
4180 ' >YF
4190 PEN 3:PAPER 2:k=2:l=8 >YQ
4200 k=k+1:l=l-1:LOCATE k,l:PRINT C >BF
HR$(150):LOCATE k+23,l+8:PRINT CHR$(
150)
4210 IF k=7 THEN 4220 ELSE 4200 >WP
4220 k=2:l=10 >HE
4230 k=k+1:l=l+1:LOCATE k,l:PRINT C >BJ
HR$(150):LOCATE k+23,l-8:PRINT CHR$(
150)
4240 IF k=7 THEN 4250 ELSE 4230 >WZ
4250 k=12:l=8 >YJ
4260 k=k+1:l=l-1:LOCATE k,l:PRINT C >AL
HR$(150):LOCATE k+5,l+6:PRINT CHR$(
150)
4270 IF k=15 THEN 4280 ELSE 4260 >XG
4280 k=12:l=10 >YQ
4290 k=k+1:l=l+1:LOCATE k,l:PRINT C >AP
HR$(150):LOCATE k+5,l-6:PRINT CHR$(
150)
4300 IF k=15 THEN 4310 ELSE 4290 >XX
4310 LOCATE 3,16:PRINT STRING$(2,15 >XG
0):LOCATE 29,16:PRINT STRING$(2,150
):LOCATE 16,5:PRINT STRING$(2,150)
4320 PEN 2:PAPER 1:LOCATE 16,13:PRI >WK
NT STRING$(2,152)
4330 LOCATE 5,16:PRINT STRING$(3,14 >WF
9):LOCATE 26,16:PRINT STRING$(3,149
)
4340 PEN 1:PAPER 0:LOCATE 3,23:PRIN >EE
T CHR$(143)+CHR$(192):LOCATE 29,23:
PRINT CHR$(193)+CHR$(143)
4350 PEN 2:PAPER 1:LOCATE 2,25:PRIN >DY
T CHR$(149):LOCATE 6,25:PRINT STRIN
G$(6,152):LOCATE 22,25:PRINT STRING
$(6,152):LOCATE 31,25:PRINT CHR$(14
9):LOCATE 2,24:PRINT CHR$(149):LOCA
TE 31,24:PRINT CHR$(149)
4360 pp=24:px=3:py=23:j=36:x1=3:xy1 >RM
=31:xy2=2:x2=1:y1=9:mv=150:x3=30:xy
3=31:xy4=2:x4=-1:y3=19:mv2=150:xp+
4:y=23
4370 PEN 2:PAPER 0 >MF
4380 RETURN >FJ
4390 ' >YJ
4400 ' TABLEAU 11 >YA
4410 ' >YB
4420 PEN 2:PAPER 1:LOCATE 6,9:PRINT >UE
STRING$(6,149)
4430 LOCATE 7,18:PRINT STRING$(5,14 >DN
9):LOCATE 13,15:PRINT STRING$(4,149
):LOCATE 14,13:PRINT STRING$(2,149)
:LOCATE 14,12:PRINT CHR$(149)
4440 LOCATE 24,8:PRINT CHR$(152) >ZL
4450 LOCATE 8,8:PRINT STRING$(5,149 >ED
)
4460 FOR k=9 TO 11:LOCATE 13,k:PRIN >CJ
T STRING$(13,149):NEXT
4470 FOR k=9 TO 18:LOCATE 12,k:PRIN >VU
T CHR$(149):NEXT
4480 FOR k=12 TO 15:LOCATE 17,k:PRI >WL
NT CHR$(149):NEXT
4490 PEN 3:PAPER 2:FOR k=10 TO 17:L >UL
QCATE 8,k:PRINT STRING$(4,150):NEXT
4500 LOCATE 7,5:PRINT STRING$(2,150 >EH
)
4510 LOCATE 8,6:PRINT STRING$(2,150 >EL
)
4520 LOCATE 9,7:PRINT STRING$(3,150 >EQ
)
4530 PEN 1:PAPER 0:LOCATE 3,23:PRIN >EF
T CHR$(143)+CHR$(192):LOCATE 29,23:
PRINT CHR$(193)+CHR$(143)
4540 PEN 2:PAPER 1:LOCATE 2,25:PRIN >DZ
T CHR$(149):LOCATE 6,25:PRINT STRIN
G$(6,152):LOCATE 22,25:PRINT STRING
$(6,152):LOCATE 31,25:PRINT CHR$(14
9):LOCATE 2,24:PRINT CHR$(149):LOCA
TE 31,24:PRINT CHR$(149)
4550 pw=623:pp=24:px=3:py=23:j=39:x >FQ
1=3:xy1=7:xy2=2:x2=1:y1=18:mv=150:x
3=13:xy3=31:xy4=12:x4=1:y3=18:mv2=1
50:xp+4:y=23
4560 PEN 2:PAPER 0 >MG
4570 RETURN >FK
4580 ' >YK
4590 ' TABLEAU 12 >ZA
4600 ' >YC
4610 PEN 3:PAPER 2:k=2:l=10 >VC
4620 k=k+1:l=l-1:LOCATE k,l:PRINT C >LZ
HR$(150)
4630 LOCATE k+3,l+9:PRINT CHR$(150) >CV
4640 LOCATE k+6,l:PRINT CHR$(150) >BB
4650 LOCATE k+9,l+9:PRINT CHR$(150) >CD
4660 LOCATE k+15,l:PRINT CHR$(150) >BR
4670 LOCATE k+18,l+9:PRINT CHR$(150 >DM
)
4680 LOCATE k+21,l:PRINT CHR$(150) >BQ
4690 LOCATE k+24,l+9:PRINT CHR$(150 >DL
)
4700 IF k=6 THEN 4710 ELSE 4620 >WD
4710 k=2:l=14 >JC
4720 k=k+1:l=l+1:LOCATE k,l:PRINT C >LY
HR$(150)
4730 LOCATE k+3,l-9:PRINT CHR$(150) >CY
4740 LOCATE k+6,l:PRINT CHR$(150) >BC
4750 LOCATE k+9,l-9:PRINT CHR$(150) >CG
4760 LOCATE k+15,l:PRINT CHR$(150) >BT
4770 LOCATE k+18,l-9:PRINT CHR$(150 >DQ
)
4780 LOCATE k+21,l:PRINT CHR$(150) >BR
4790 LOCATE k+24,l-9:PRINT CHR$(150 >DP
)
4800 IF k=6 THEN 4810 ELSE 4720 >WG
4810 PEN 2:PAPER 1:LOCATE 15,9:PRIN >RQ
T STRING$(4,149):LOCATE 15,15:PRINT
STRING$(4,149)
4820 LOCATE 16,12:PRINT STRING$(2,1 >FV
49)
4830 PEN 1:PAPER 0:LOCATE 3,23:PRIN >FA
T CHR$(143)+CHR$(192):LOCATE 29,23:
PRINT CHR$(193)+CHR$(143)
4840 PEN 2:PAPER 1:LOCATE 2,25:PRIN >DC
T CHR$(149):LOCATE 6,25:PRINT STRIN
G$(6,152):LOCATE 22,25:PRINT STRING
$(6,152):LOCATE 31,25:PRINT CHR$(14
9):LOCATE 2,24:PRINT CHR$(149):LOCA
```



```

TE 31,24:PRINT CHR$(149)
4850 lf=lf+1:pp=24:px=3:py=23:j=44:>LZ
x1=3:xy1=17:xy2=1:x2=2:y1=12:mv=150
x3=30:xy3=32:xy4=16:x4=-2:y3=12:mv
2=150:x=p+4:y=23
4860 PEN 2:PAPER 0 >MK
4870 RETURN >GC
4880 ' >ZC
4890 ' TABLEAU 13 >ZD
4900 ' >YF
4910 PEN 3:PAPER 2:LOCATE 5,5:PRINT >UU
STRING$(3,150)
4920 LOCATE 10,5:PRINT STRING$(3,15 >EA
0)
4930 LOCATE 10,7:PRINT STRING$(3,15 >ED
0)
4940 LOCATE 10,8:PRINT STRING$(2,15 >EE
0)
4950 LOCATE 20,5:PRINT STRING$(3,15 >EE
0)
4960 LOCATE 20,9:PRINT STRING$(3,15 >FB
0)
4970 LOCATE 25,5:PRINT STRING$(3,15 >FD
0)
4980 LOCATE 12,6:PRINT CHR$(150) >ZN
4990 LOCATE 12,9:PRINT CHR$(150) >ZT
5000 LOCATE 3,12:PRINT STRING$(3,15 >EP
0)
5010 LOCATE 28,15:PRINT STRING$(3,1 >FK
50)
5020 FOR k=6 TO 9:LOCATE 10,k:PRINT >DC
CHR$(150):LOCATE 6,k:PRINT CHR$(15
0):NEXT
5030 FOR k=5 TO 9:LOCATE 15,k:PRINT >ZR
CHR$(150):LOCATE 17,k:PRINT CHR$(1
50):LOCATE 26,k:PRINT CHR$(150):NEXT
T
5040 FOR k=6 TO 7:LOCATE 20,k:PRINT >UA
CHR$(150):NEXT
5050 FOR k=7 TO 8:LOCATE 22,k:PRINT >UF
CHR$(150):NEXT
5060 k=14:l=16 >QJ
5070 k=k+1:l=l-1:LOCATE k,l:PRINT C >LZ
HR$(150)
5080 IF k=18 THEN 5090 ELSE 5070 >XK
5090 PEN 2:PAPER 1:LOCATE 6,12:PRIN >WX
T STRING$(12,149)
5100 LOCATE 16,15:PRINT STRING$(12, >GB
149)
5110 LOCATE 6,5:PRINT CHR$(149) >YG
5120 LOCATE 10,7:PRINT CHR$(149) >ZG
5130 LOCATE 16,9:PRINT CHR$(149) >ZR
5140 LOCATE 21,7:PRINT CHR$(149) >ZL
5150 LOCATE 26,5:PRINT CHR$(149) >ZQ
5160 LOCATE 16,19:PRINT STRING$(2,1 >FU
52)
5170 PEN 1:PAPER 0:LOCATE 3,23:PRIN >EG

```



```

T CHR$(143)+CHR$(192):LOCATE 29,23:
PRINT CHR$(193)+CHR$(143)
5180 PEN 2:PAPER 1:LOCATE 2,25:PRIN >DA
T CHR$(149):LOCATE 6,25:PRINT STRIN
G$(6,152):LOCATE 22,25:PRINT STRING
$(6,152):LOCATE 31,25:PRINT CHR$(14
9):LOCATE 2,24:PRINT CHR$(149):LOCA
TE 31,24:PRINT CHR$(149)
5190 pw=623:pp=24:px=3:py=23:j=53:x >JF
l=3:xy1=17:xy2=1:x2=2:y1=19:mv=150:
x3=30:xy3=32:xy4=16:x4=-2:y3=19:mv2
=150:x=p+4:y=23
5200 PEN 2:PAPER 0 >LG
5210 RETURN >FB
5220 ' >YB
5230 ' TABLEAU 14 >YC
5240 ' >YD
5250 PEN 3:PAPER 2:LOCATE 3,11:PRIN >VL
T STRING$(5,150)
5260 LOCATE 26,11:PRINT STRING$(5,1 >FN
50)
5270 LOCATE 3,8:PRINT STRING$(2,150 >EM
)
5280 LOCATE 14,8:PRINT STRING$(6,15 >FC
0)
5290 LOCATE 29,8:PRINT STRING$(2,15 >FF
0)
5300 LOCATE 3,5:PRINT STRING$(28,15 >ED
0)
5310 PEN 2:PAPER 1:LOCATE 3,14:PRIN >WN
T STRING$(10,149)
5320 LOCATE 16,14:PRINT STRING$(2,1 >FT
49)
5330 LOCATE 21,14:PRINT STRING$(10, >GZ
149)
5340 LOCATE 8,11:PRINT STRING$(18,1 >FB
49)
5350 LOCATE 5,8:PRINT STRING$(9,149 >EE

```

```

)
5360 LOCATE 20,8:PRINT STRING$(9,14 >FK
9)
5370 LOCATE 16,17:PRINT STRING$(2,1 >FV
52)
5380 PEN 1:PAPER 0:LOCATE 3,23:PRIN >FB
T CHR$(143)+CHR$(192):LOCATE 29,23:
PRINT CHR$(193)+CHR$(143)
5390 PEN 2:PAPER 1:LOCATE 2,25:PRIN >DD
T CHR$(149):LOCATE 6,25:PRINT STRIN
G$(6,152):LOCATE 22,25:PRINT STRING
$(6,152):LOCATE 31,25:PRINT CHR$(14
9):LOCATE 2,24:PRINT CHR$(149):LOCA
TE 31,24:PRINT CHR$(149)
5400 pp=24:px=3:py=23:j=48:x1=3:xy1 >VT
=17:xy2=1:x2=2:y1=17:mv=150:x3=30:x
y3=32:xy4=16:x4=-2:y3=17:mv2=150:x=
p+4:y=23
5410 PEN 2:PAPER 0 >MB
5420 RETURN >FE
5430 ' >YE
5440 ' TABLEAU 15 >YF
5450 ' >YG
5460 PEN 3:PAPER 2:LOCATE 9,7:PRINT >UD
STRING$(5,150)
5470 LOCATE 20,7:PRINT STRING$(5,15 >EG
0)
5480 LOCATE 8,8:PRINT STRING$(7,150 >EB
)
5490 LOCATE 19,8:PRINT STRING$(7,15 >FM
0)
5500 LOCATE 8,9:PRINT STRING$(8,150 >EM
)
5510 LOCATE 18,9:PRINT STRING$(8,15 >FF
0)
5520 LOCATE 8,10:PRINT STRING$(2,15 >EZ
0)
5530 LOCATE 14,10:PRINT STRING$(2,1 >FF

```



```

50)
5540 LOCATE 18,10:PRINT STRING$(2,1) >FL
50)
5550 LOCATE 24,10:PRINT STRING$(2,1) >FJ
50)
5560 LOCATE 9,11:PRINT STRING$(7,15) >FC
0)
5570 LOCATE 18,11:PRINT STRING$(7,1) >FW
50)
5580 LOCATE 10,12:PRINT STRING$(5,1) >FM
50)
5590 LOCATE 19,12:PRINT STRING$(5,1) >FY
50)
5600 LOCATE 12,18:PRINT STRING$(10,1) >GV
150)
5610 LOCATE 11,19:PRINT STRING$(12,1) >GY
150)
5620 PEN 2:PAPER 1:FOR k=10 TO 11:L >VY
OCATE 16,k:PRINT STRING$(2,149):NEX
T
5630 LOCATE 15,12:PRINT STRING$(4,1) >FW
49)
5640 FOR k=13 TO 14:LOCATE 14,k:PRI >CG
NT STRING$(6,149):NEXT
5650 LOCATE 16,14:PRINT STRING$(2,1) >FT
52)
5660 LOCATE 12,17:PRINT STRING$(10,1) >GJ
149)
5670 LOCATE 11,18:PRINT CHR$(149) >AZ
5680 LOCATE 22,18:PRINT CHR$(149) >AC
5690 LOCATE 10,19:PRINT CHR$(152) >AV
5700 LOCATE 23,19:PRINT CHR$(152) >AQ
5710 PEN 1:PAPER 0:LOCATE 3,23:PRIN >EG
T CHR$(143)+CHR$(192):LOCATE 29,23:
PRINT CHR$(193)+CHR$(143)
5720 PEN 2:PAPER 1:LOCATE 2,25:PRIN >DA
T CHR$(149):LOCATE 6,25:PRINT STRIN
G$(6,152):LOCATE 22,25:PRINT STRING
$(6,152):LOCATE 31,25:PRINT CHR$(14
9):LOCATE 2,24:PRINT CHR$(149):LOCA
TE 31,24:PRINT CHR$(149)
5730 pw=623:lf=lf+1:pp=24:px=3:py=2 >AE
3:j=94:x1=10:xy1=14:xy2=9:x2=1:y1=1
0:mv=144:x3=20:xy3=24:xy4=19:x4=1:y
3=10:mv2=144:x=p+4:y=23
5740 PEN 2:PAPER 0 >MH
5750 RETURN >GA
5760 ' >ZA
5770 ' CONGRATULATION >ZB
5780 ' >ZC
5790 CLS:MODE 1 >CA
5800 INK 0,0:INK 1,20:INK 2,2:INK 3 >MF
,14:BORDER 0
5810 LOCATE 5,5:PRINT"YOU'VE DESTRO >BA
YED THE MONSTER "
5820 LOCATE 5,7:PRINT"WITH COURAGE. >AB
YOU'VE DELIVED "
5830 LOCATE 5,9:PRINT"THE PRINCESS >AE
OF THE KINGDOM. "
5840 LOCATE 10,12:PRINT"FELICITATIO >GX
N"
5850 PLOT 32,355:DRAW 32,179:DRAW 5 >LH
43,179:DRAW 543,355:DRAW 32,355
5860 READ so,dr >DG
5870 IF so=-1 THEN 5920 >QP
5880 SOUND 1,so,dr,15 >QT
5890 GOTO 5860 >PJ
5900 DATA 190,96,1,1,239,96,1,1,213 >YA
,96,1,1,319,96,1,1,1,1,1,1,1,319,
96,1,1,213,96,1,1,190,96,1,1,239,96
,1,1
5910 DATA -1,-1 >PG
5920 CLEAR INPUT >LV
5930 IF INKEY$="" THEN 5930 >UQ
5940 IF INKEY$=fir$ THEN 5980 >WX
5950 IF INKEY(76)=0 THEN 5980 >WJ
5960 IF INKEY$=CHR$(32) THEN 5980 >ZV
5970 GOTO 5930 >PF
5980 GOTO 2260 >NK
5990 ' >ZF
6000 ' LES GRAPHISMES >XJ
6010 ' >XK
6020 SYMBOL AFTER 144 >PX
6030 SYMBOL 145,0,0,24,60,60,24,0,0 >AY
6040 SYMBOL 146,0,1,3,3,3,3,1,0 >XL
6050 SYMBOL 147,127,126,124,126,126 >NT
,126,126,127
6060 SYMBOL 148,254,126,126,126,126 >NZ
,126,126,254
6070 SYMBOL 149,255,32,32,32,255,4, >DM
4,4
6080 SYMBOL 150,255,191,191,191,191 >NK'
,191,129,255
6090 SYMBOL 151,0,128,192,192,192,1 >JT
92,128,0
6100 SYMBOL 152,255,126,60,24,24,60 >JF
,126,255
6110 SYMBOL 169,0,126,126,90,90,24, >FK
24,24
6120 SYMBOL 170,24,24,24,24,24,60,6 >DR
0,0
6130 SYMBOL 171,0,102,102,102,102,1 >KK
02,102,126
6140 SYMBOL 172,126,102,102,102,102 >KM
,102,102,0
6150 SYMBOL 173,0,254,254,98,98,104 >JT
,104,120
6160 SYMBOL 174,120,104,104,98,98,2 >JV
54,254,0
6170 SYMBOL 175,0,198,198,238,238,2 >LJ
54,254,254
6180 SYMBOL 176,254,214,214,198,198 >LN
,198,198,0
6190 SYMBOL 177,0,56,56,108,108,198 >JD
,198,198
6200 SYMBOL 178,198,198,198,108,108 >JW
,56,56,0
6210 SYMBOL 179,0,198,198,230,230,2 >LM
46,246,222
6220 SYMBOL 180,222,206,206,198,198 >LZ
,198,198,0
6230 SYMBOL 181,0,60,60,102,102,96, >FG
96,60
6240 SYMBOL 182,60,6,6,102,102,60,6 >DR
0,0
6250 SYMBOL 183,0,252,252,102,102,1 >KC
02,102,124
6260 SYMBOL 184,124,108,108,102,102 >LL
,226,226,0
6270 SYMBOL 185,0,24,24,24,24,48,48 >CB
,0
6280 SYMBOL 186,0,60,60,102,102,192 >JK
,192,192
6290 SYMBOL 187,192,192,192,102,102 >JM
,60,60,0
6300 SYMBOL 188,0,24,24,60,60,102,1 >GC
02,102
6310 SYMBOL 189,102,126,126,102,102 >KB
,102,102,0
6320 SYMBOL 190,0,240,240,96,96,96, >FT
96,96
6330 SYMBOL 191,96,98,98,102,102,25 >HL
4,254,0
6340 SYMBOL 192,224,248,252,254,254 >NN
,255,255,255
6350 SYMBOL 193,7,31,63,127,127,255 >JE
,255,255
6360 RETURN >FJ◆

```

## TABLEAU-BAS

```

10 CLS:MODE 1 >LK
20 DIM sc(11),nm$(11) >NM
30 sc(1)=500:nm$(1)="DAVE" >UL
40 sc(2)=1000:nm$(2)="STEEVE" >XP
50 sc(3)=1500:nm$(3)="CHRIS" >WK
60 sc(4)=2000:nm$(4)="MIKE" >VX
70 sc(5)=2500:nm$(5)="IAN" >UA
80 sc(6)=3000:nm$(6)="NICK" >VD
90 sc(7)=3500:nm$(7)="CYRIL" >WL
100 sc(8)=4000:nm$(8)="BOB" >UX
110 sc(9)=4500:nm$(9)="PETER" >XE
120 sc(10)=5000:nm$(10)="FRED" >XT
130 OPENOUT "RECORD.DAT" >UV
140 FOR k=1 TO 10 >BK
150 WRITE #9,sc(k),nm$(k) >TX
160 NEXT >EC
170 CLOSEOUT >RJ
180 CALL 0 >GH◆

```