

METEO

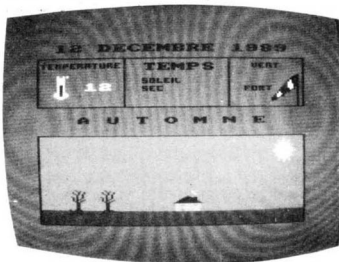
Valable pour
 CPC 464
 CPC 664
 CPC 6128

Martial STAUB

Quel temps faisait-il le 31 mars 1922 ? Vous ne le savez pas ? Si vous aviez eu un Amstrad et le programme Météo à cette époque, vous pourriez immédiatement le savoir.

En effet Météo peut être utilisé comme base de données concernant les phénomènes atmosphériques. Vous obtiendrez ainsi les moyennes par année ou la représentation graphique d'un jour particulier...

Tapez le premier listing et sauvez-le sous le nom de METEO. Puis faites de même avec le deuxième programme qui sera intitulé METEO1.



METEO

```
10 '*****>LA
20 ' METEOROLOGIE >LB
30 '----->LC
40 ' (c) STAUB MARTIAL >LD
50 ' SEPTEMBRE 1988 >LE
60 '*****>LF
70 '----->LG
80 'INITIALISATION >LH
90 '----->LJ
100 GOSUB 360 >GK
110 INK 0,15:INK 1,15:INK 2,15:INK >UV
3,15:INK 4,15:INK 5,15:INK 6,15:INK
7,15:INK 8,15:INK 9,6,2:INK 10,0:1 >
```

```

▷ NK 11,15:INK 12,15:BORDER 15:MODE 0
:PAPER 11:PEN 10:CLS
120 LOCATE 3,6:PRINT"...UN INSTANT. >HB
..
130 SPEED INK 40,40 >HD
140 PEN 9:LOCATE 6,1:PRINT" M E T E >LT
0":PEN 10:LOCATE 2,3:PRINT"(c) STAU
B MARTIAL"
150 ORIGIN 28,290:DRAW 582,0,0:DRAW >MT
582,-276:DRAW 0,-276:DRAW 0,0:ORIG
IN 32,288:FILL 6
160 GOSUB 320:GOSUB 280:x=-60:FOR s >MG
-1 TO 3:x=x+180:GOSUB 220:NEXT
170 INK 0,0:INK 1,26:INK 2,1:INK 3, >WL
24:INK 4,18:INK 5,9:INK 6,11:INK 7,
3:INK 8,23:INK 9,2:INK 11,15:INK 12
,20:SPEED INK 20,20:INK 13,2,15:LOC
ATE 2,6:PEN 13:PRINT"MODE D'EMPLOI
0/N"
180 a#=INKEY$:IF a#="" THEN 180 >XA
190 IF UPPER$(a#)="" THEN 1080 >XP
200 IF UPPER$(a#)="" THEN LOCATE 1 >RG
,5:PRINT STRING$(19,128):GOTO 1060
210 GOTO 180 >YJ
220 ORIGIN x,272:DRAW 4,0,2:DRAW >GL
,-2:DRAW 4,-2:DRAW 12,-2:DRAW 10,
2:DRAW 4,0:DRAW 12,6:DRAW 10,4:
DRAW 10,2:DRAW 6,-4:DRAW 10,-10
230 DRAW 8,-4:DRAW 6,-4:DRAW 4,- >HA
6:DRAW 2,-10:DRAW -4,-4:DRAW -6,-
-2:DRAW -4,0:DRAW -4,-4:DRAW -6,-
-2:DRAW -4,0:DRAW -6,-4:DRAW 4,-
2:DRAW -2,2:DRAW -6,0
240 DRAW -6,2:DRAW -4,2:DRAW -4, >DF
0:DRAW -4,4:DRAW -2,6:DRAW -6,-2
:DRAW -6,-2:DRAW -4,-2:DRAW -6,-
-2:DRAW -6,0:DRAW -6,2:DRAW -4,2:
DRAW -4,4:DRAW -4,6:DRAW -4,6
250 DRAW 2,6:DRAW 2,4:DRAW 2,4:D >KV
RAW 2,2
260 ORIGIN x+10,240:FILL 2 >UY
270 RETURN >ZE
280 DEG:ORIGIN 564,254:FOR I=1 TO 3 >HM
60 STEP 6:PLOT 22*SIN(I),22*COS(I),
3:NEXT:RAD
290 ORIGIN 566,252:FILL 3 >TP
300 DEG:FOR I=1 TO 360 STEP 30:ORIG >GX
IN 564,254:DRAW 28*SIN(I),28*COS(I)
:NEXT:RAD
310 RETURN >YK
320 ORIGIN 32,46:DRAW 574,0,5:DRAW >HR
574,-30:DRAW 0,-30:DRAW 0,0:ORIGIN
36,44:FILL 5
330 PEN 4,1:LOCATE 4,20:PRINT CHR$( >JN
240):LOCATE 4,21:PRINT CHR$(241):PE
N 0,1:LOCATE 4,22:PRINT CHR$(242):P

```

```

EN 4,1:LOCATE 6,20:PRINT CHR$(240):
LOCATE 6,21:PRINT CHR$(241):PEN 0,1
:LOCATE 6,22:PRINT CHR$(242)
340 PEN 7,1:LOCATE 11,21:PRINT d18: >LD
PEN 12,1:LOCATE 11,22:PRINT d28
350 PEN 0,0:RETURN >MT
360 SYMBOL AFTER 160 >PZ
370 SYMBOL 160,0,0,0,238,138,234,42 >ER
,238
380 SYMBOL 161,0,0,0,142,136,140,13 >FX
6,238
390 SYMBOL 162,0,0,0,160,160,160,16 >FV
0,184
400 SYMBOL 163,0,0,0,234,170,170,17 >FR
0,174
410 SYMBOL 164,0,0,0,238,168,238,17 >FL
0,174
420 SYMBOL 165,0,0,0,238,136,206,13 >FZ
0,238
430 SYMBOL 166,0,0,0,238,138,138,13 >FR
8,238
440 SYMBOL 167,0,0,0,170,170,170,17 >FZ
0,228
450 SYMBOL 168,0,0,0,238,138,204,13 >FK
8,234
460 SYMBOL 169,0,0,0,224,64,64,64,6 >CH
4
470 SYMBOL 170,0,0,0,232,168,232,13 >FY
6,142
480 SYMBOL 171,0,0,0,186,162,178,16 >FV
2,187
490 SYMBOL 172,0,0,0,168,168,144,16 >FC
8,168
500 SYMBOL 173,0,0,0,238,168,172,16 >FQ
8,174
510 SYMBOL 174,0,0,0,187,162,187,17 >FT
0,187
520 SYMBOL 175,0,0,0,170,42,41,42,1 >CK
86
530 SYMBOL 176,0,0,0,128,128,0,128, >DB
128
540 SYMBOL 177,0,0,0,238,170,172,17 >FF
0,234
550 SYMBOL 178,0,0,0,238,136,236,40 >EZ
,238
560 SYMBOL 179,0,0,0,224,128,128,12 >FL
8,224
570 SYMBOL 180,0,0,0,170,170,234,17 >FZ
0,174
580 SYMBOL 181,0,0,0,171,234,170,17 >FZ
0,171
590 SYMBOL 182,0,0,0,56,160,176,160 >DL
,56

```

```

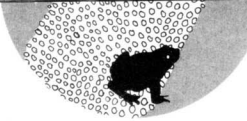
600 SYMBOL 183,0,0,0,238,138,142,13 >FE
8,234
610 SYMBOL 184,0,0,0,138,142,138,13 >FF
8,234
620 SYMBOL 185,0,0,0,224,128,192,12 >FF
8,224
630 SYMBOL 186,0,0,0,238,138,202,13 >FF
8,142
640 SYMBOL 187,0,0,0,238,164,196,16 >FY
4,164
650 SYMBOL 188,0,0,0,171,170,170,17 >EV
0,75
660 SYMBOL 189,0,0,0,163,162,163,16 >FU
2,187
670 SYMBOL 190,0,0,0,187,41,41,41,1 >CV
68
680 SYMBOL 191,0,0,0,128,0,0,0,0 >YT
690 SYMBOL 192,0,0,0,238,72,76,72,7 >CW
8
700 SYMBOL 193,0,0,0,174,234,174,16 >FT
8,168
710 SYMBOL 194,0,0,0,238,164,228,16 >FP
4,164
720 SYMBOL 195,0,0,0,174,170,172,17 >FE
0,234
730 SYMBOL 196,0,0,0,174,168,172,16 >ER
8,78
740 SYMBOL 197,0,0,0,238,164,164,16 >FV
4,164
750 SYMBOL 198,0,0,0,160,160,64,160 >EP
,160
760 SYMBOL 199,0,0,0,234,138,202,13 >FR
8,238
770 SYMBOL 200,0,0,0,238,136,200,13 >FX
6,238
780 SYMBOL 201,0,0,0,142,138,142,13 >FY
8,234
790 SYMBOL 202,0,0,0,187,170,178,17 >FL
0,171
800 SYMBOL 203,0,0,0,174,40,44,40,1 >CC
74
810 SYMBOL 204,0,0,0,87,85,85,85,39 >BH
820 SYMBOL 205,0,0,0,81,81,81,81,93 >BQ
830 SYMBOL 206,0,64,128,182,0,128,0 >EX
,182
840 SYMBOL 207,0,0,0,238,170,204,17 >FY
0,234
850 SYMBOL 208,0,0,0,234,170,170,17 >FC
0,238
860 SYMBOL 209,0,0,0,162,162,162,16 >FL
2,187
870 SYMBOL 210,0,0,0,59,42,59,42,17 >BH
0
880 SYMBOL 211,0,0,0,176,168,40,168 >EE

```

,176
 890 SYMBOL 212,0,0,0,224,128,224,32 >EH
 ,224
 900 SYMBOL 240,0,24,60,126,255,255, >HW
 255,255
 910 SYMBOL 241,255,255,255,255,255, >KT
 126,60,60
 920 SYMBOL 242,24,24,24,24,24,24 >DC
 ,60
 930 SYMBOL 243,1,3,7,15,31,63,127,2 >CZ
 55
 940 SYMBOL 244,128,216,248,248,248, >HZ
 252,254,255
 950 SYMBOL 245,127,115,115,127,127, >MV
 115,115,115
 960 SYMBOL 246,254,230,230,254,254, >MJ
 254,254,254
 970 SYMBOL 247,0,0,32,20,73,73,42,1 >CE
 8
 980 SYMBOL 248,18,146,82,84,89,82,5 >FE
 2,24
 990 SYMBOL 249,37,37,60,60,60,60,60 >DB
 ,60
 1000 SYMBOL 250,60,126,255,255,255, >KW
 126,60,24
 1010 SYMBOL 251,60,60,60,60,60,60,6 >EB
 0,60
 1020 SYMBOL 213,0,0,0,206,168,172,1 >GJ
 68,206
 1030 SYMBOL 214,0,0,0,168,232,171,1 >GR
 68,168
 1040 d1#CHR*(243)+CHR*(244):d2#CH >VP
 R*(245)+CHR*(246)
 1050 RETURN >EK
 1060 PEN 1:LOCATE 1,6:PRINT CHR*(18 >BK
);TAB(6)"CHARGEMENT"
 1070 RUN "METEO1" >LL
 1080 ----- >YB
 1090 "MODE D'EMPLOI" >YC
 1100 ----- >XE
 1110 BORDER 13:MODE 2:INK 0,13:INK >ZZ
 1,0:PAPER 0:PEN 1:CLS
 1120 LOCATE 32,2:PRINT CHR*(24); " M >DE
 ODE D'EMPLOI ";CHR*(24)
 1130 PRINT:PRINT:PRINT" Ce Program >RB
 e sert a enregistrer la Meteo jour
 apres jour, pour une annee"
 1140 PRINT" entiere par fichier... >KJ
 1150 PRINT:PRINT" Le Menu principal >PQ
 comprend 7 Options
 1160 PRINT:PRINT";CHR*(24);" OPTI >DZ
 ON 1 ";CHR*(24);" ...SAISIE DES DON
 NEES"
 1170 PRINT:PRINT" Vous d >XF
 uez entrer successivement"
 1180 PRINT" . la date de >VN

l'enregistrement (JJJMAAAA)"
 1190 PRINT" . la tempera >QK
 ture maxi de la journee"
 1200 PRINT" . l'etat du >AT
 ciel - 5 possibilites au choix"
 1210 PRINT:PRINT" [1]-SOLEIL >XD
 = ciel bleu, beau temps => 1 jour d
 e soleil"
 1220 PRINT" [2]-ECLAIRCIES = >XU
 avec ou sans pluie ou neige, peu de
 soleil"
 1230 PRINT" [3]-COUVERT = ave >TL
 c ou sans pluie ou neige, pas de so
 leil"
 1240 PRINT" [4]-DEMI-VOILE = >FG
 peu de nuages, beaucoup de soleil"
 1250 PRINT" [5]-BROUILLARD EP >UF
 AIS = mauvaise visibilite, pas de s
 oleil"
 1260 PRINT CHR*(7);:LOCATE 25,25:PR >PR
 INT CHR*(24);" Une touche pour tour
 ner la page ";CHR*(24):CALL &BBO6:C
 LS
 1270 PRINT:PRINT" . l'et >MJ
 at du temps - 5 possibilites au cho
 ix"
 1280 PRINT:PRINT" [1]-PLUVIE >WM
 UX = pluie continue ou par intermit
 tances"
 1290 PRINT" [2]-NEIGE = temp >UR
 s neigeux"
 1300 PRINT" [3]-ORAGEUX = or >XA
 age et pluie
 1310 PRINT" [4]-SEC = temps >KV
 sec"
 1320 PRINT" [5]-HUMIDE = tem >UY
 ps humide"
 1330 PRINT:PRINT" . l'et >KZ
 at du vent - 3 possibilites au choi
 x"
 1340 PRINT:PRINT" [1]-CALME >XV
 = pas de vent"
 1350 PRINT" [2]-FORT = vent >WV
 assez fort"
 1360 PRINT" [3]-VIOLENT = ve >WF
 nt tres fort, tempete"
 1370 PRINT:PRINT";CHR*(24);" OPTI >LV
 ON 2 ";CHR*(24);" ...VISUALISATION
 DU TEMPS"
 1380 PRINT:PRINT" Apres >HG
 avoir choisi le jour a visualiser
 ; la Meteo vous est":PRINT"
 indiquee sous forme de graphiq

ue. En outre divers renseignements"
 :PRINT" vous sont commu
 niques (saison-temperature etc)"
 1390 PRINT CHR*(7);:LOCATE 25,25:PR >PW
 INT CHR*(24);" Une touche pour tou
 ner la page ";CHR*(24):CALL &BBO6:C
 LS
 1400 PRINT:PRINT";CHR*(24);" OPTI >AG
 ON 3 ";CHR*(24);" ...DOMINANTES ET
 MOYENNES PAR MOIS"
 1410 PRINT:PRINT" Vous >MG
 renseigne, sous forme de tableau, s
 ur la temperature moyenne":PRINT"
 pour chaque mois ainsi q
 ue sur le temps moyen durant ce"
 1420 PRINT" aese mois. >VB
 Vous indique egalement le nombre de
 jours de soleil,":PRINT"
 de pluie et de neige"
 1430 PRINT:PRINT";CHR*(24);" OPTI >KB
 ON 5 ";CHR*(24);" ...CHARGEMENT DES
 DONNEES"
 1440 PRINT:PRINT" Entre >AC
 z l'annee concernee (AAAA) pour le
 chargement des donnees"
 1450 PRINT:PRINT";CHR*(24);" OPTI >LF
 ON 6 ";CHR*(24);" ...SAUVEGARDE DES
 DONNEES"
 1460 PRINT:PRINT" Entre >AK
 z l'annee concernee (AAAA) pour la
 sauvegarde des donnees"
 1470 PRINT:PRINT";CHR*(24);" OPTI >EH
 ON 7 ";CHR*(24);" ...LISTER LES DON
 NEES"
 1480 PRINT:PRINT" Comme >UP
 son nom l'indique, liste toutes le
 s donnees a partir:"
 1490 PRINT" du mois cho >PA
 isi, jusqu'au dernier enregistremen
 t"
 1500 PRINT:PRINT";CHR*(24);" OPTI >HP
 ON 0 ";CHR*(24);" ...QUITTER LE PRO
 GRAMME"
 1510 PRINT CHR*(7);:LOCATE 25,25:PR >PP
 INT CHR*(24);" Une touche pour tour
 ner la page ";CHR*(24):CALL &BBO6:C
 LS
 1520 LOCATE 24,2:PRINT CHR*(24);" R >FJ
 ENSEIGNEMENTS COMPLEMENTAIRES";CHR
 *(24)
 1530 PRINT:PRINT:PRINT" Lors de l'e >FE
 nregistrement des donnees et, apres
 avoir indique la temperature":PRIN
 T" de la journee ; 13 possibilites
 vous sont donnees pour saisir le te
 mps de"



1540 PRINT" la journee." >XQ
 1550 PRINT:PRINT" L'ordinateur se c >MA
 charge de detecter les erreurs event
 uelles pendant la saisie":PRINT" (e
 remple : NEIGE avec une temperature
 de 15 dgrs).
 1560 LOCATE 29,25:PRINT CHR*(24);" >XJ
 UME TOUCHE POUR DENARRER ";CHR*(24)
 1570 PRINT CHR*(7);CALL A8B06:CLS >GD
 LOCATE 26,11:PRINT"C H A R G E M E
 N T M E T E O":GOTO 1070



METE O 1

10 *--METEO1-- >LA
 20 ON ERROR GOTO 4110 >PH
 30 DIM dat*(368),tj(368),ec*(368),d >PP
 (368),so*(15)
 40 i#=#*#.# # dgrs":nn=0 >RR
 50 INK 0,26:INK 1,11:INK 2,12:INK 3 >DJ
 ,11
 60 d1#=#CHR*(243)+CHR*(244):d2#=#CHR* >TU
 (245)+CHR*(246)
 70 so*(1)=CHR*(160)+CHR*(161)+CHR*(>FC
 162)
 80 so*(2)=CHR*(200)+CHR*(201)+CHR*(>CT
 202)+CHR*(203)+CHR*(212)
 90 so*(3)=CHR*(166)+CHR*(167)+CHR*(>RL
 168)+CHR*(169)
 100 so*(4)=CHR*(213)+CHR*(214)+CHR*(>DL
 (204)+CHR*(205)+CHR*(206)
 110 so*(5)=CHR*(207)+CHR*(208)+CHR*(>DR
 (209)+CHR*(210)+CHR*(211)
 120 so*(6)=CHR*(170)+CHR*(167)+CHR*(>TL
 (171)+CHR*(172)
 130 so*(7)=CHR*(173)+CHR*(174)+CHR*(>TY
 (175)+CHR*(176)
 140 so*(8)=CHR*(177)+CHR*(164)+CHR*(>TP
 (199)+CHR*(198)
 150 so*(9)=CHR*(178)+CHR*(179) >XC
 160 so*(10)=CHR*(180)+CHR*(181)+CHR >XH
 *(182)
 170 so*(11)=CHR*(183)+CHR*(184)+CHR >HV
 *(185)
 180 so*(12)=CHR*(186)+CHR*(187) >YZ
 190 so*(13)=CHR*(188)+CHR*(189)+CHR >UG
 (190)+CHR(191)
 200 so*(14)=CHR*(192)+CHR*(193)+CHR >UG
 (168)+CHR(194)+CHR*(195)+CHR*(185
)
 210 so*(15)=CHR*(196)+CHR*(197) >YY

220 ' >RE
 230 'MENU >RF
 240 ' >RG
 250 SPEED INK 10,10 >MA
 260 MODE 2:INK 0,0:INK 1,13:BORDER >YQ
 13:PAPER 1:PEN 0:CLS
 270 WINDOW#1,15,66,1,3:PAPER#1,0:PE >DQ
 #1,1:CLS#1:LOCATE#1,7,2:PRINT#1,"#
 * * M E T E O R O L O G I E *
 * *
 280 ORIGIN 24,304:DRAW 592,0,0:DRAW >VN
 592,-112:DRAW 424,-112:DRAW 424,-1
 40:DRAW 160,-140:DRAW 160,-112:DRAW
 0,-112:DRAW 0,0
 290 LOCATE 6,8:PRINT CHR*(24);".1." >PL
 ;CHR*(24);"SAISIE DES DONN
 EES":LOCATE 6,10:PRINT CHR*(24);".2
 .";CHR*(24);"VISUALISER JO
 URNEE":LOCATE 6,12:PRINT CHR*(24);"
 .3.";CHR*(24);"MOYENNE P
 AR MOIS"
 300 LOCATE 26,14:PRINT CHR*(24);".0 >ZJ
 .";CHR*(24);"QUI
 TTER"
 310 LOCATE 46,8:PRINT CHR*(24);".5. >XD
 ;CHR*(24);"CHARGER FICH
 IER":LOCATE 46,10:PRINT CHR*(24);".
 6.";CHR*(24);"SAUVER DO
 NNEES":LOCATE 46,12:PRINT CHR*(24);"
 .7.";CHR*(24);"
 .LISTER"
 320 IF f*(*) THEN LOCATE 30,5:PRIN >UF
 T"ANNEE ";UPPER*(f*);" EN MEMOIRE"
 330 IF n THEN LOCATE 9,22:PRINT" >XX
 ...N' OUBLIEZ PAS DE SAUVEGARDER VOS
 NOUVEAUX ENREGISTREMENTS..."
 340 a#=#KEY\$:IF a#="" THEN 340 >XW
 350 IF a#="1" THEN 430
 360 IF a#="2" THEN 1340 >PM
 370 IF a#="3" THEN 1740 >PU
 380 IF a#="7" THEN 2230 >PU
 390 IF a#="5" THEN 2440 >PW
 400 IF a#="6" THEN 2550 >PL
 410 IF a#="0" THEN 4180 >PQ
 420 GOTO 340 >YK
 430 ' >RH
 440 'SAISIE >RJ
 450 ' >RK
 460 BORDER 13:CLS >MZ
 470 ORIGIN 196,386:DRAW 232,0,0:DRA >YG
 W 232,-22:DRAW 0,-22:DRAW 0,0:LOCAT
 E 26,2:PRINT CHR*(24);" ENREGISTRE
 MENT DES DONNEES ";CHR*(24)
 480 IF n=0 THEN 490 ELSE ddat#=#MID* >FF

(dat*(n),1,2)*."#MID*(dat*(n),3,2
 +".#MID*(dat*(n),5,4):LOCATE 2,4:P
 RINT"Dernier Enregistrement le ";dd
 490 n=n+1 >EH
 500 LOCATE 2,6:PRINT"Entrez la Date >ZY
 (JJMMAAAA) : ";CHR*(18):INPUT dda
 t#:IF ddat#="" THEN n=n-1:GOTO 220
 510 zq=0:FOR v1=1 TO LEN(ddat#):FOR >LV
 v2=0 TO 9
 520 IF VAL(MID*(ddat#,v1,1))=v2 THE >MN
 N zq=zq+1
 530 NEXT:NEXT:IF zq=8 THEN 540 ELSE >FP
 500
 540 IF LEN(ddat#)<8 OR VAL(MID*(dd >RR
 at#,1,2))>31 OR VAL(MID*(ddat#,3,2
))>12 OR VAL(MID*(ddat#,1,2))<0 OR
 VAL(MID*(ddat#,3,2))<0 OR LEN(ddat
 #)>8 THEN GOSUB 1270:GOTO 500
 550 GOSUB 1310 >PG
 560 IF oui=1 THEN oui=0:BORDER 6,13 >LB
 :PRINT CHR*(7);LOCATE 32,6:PRINT"
 .JOURNEE DEJA ENREGISTREE..":FOR t=
 1 TO 1500:NEXT:BORDER 13:GOTO 500
 570 dat*(n)=ddat#:RESTORE 3400:FOR >WQ
 s=1 TO 12:READ da,da#:IF VAL(MID*(d
 at*(n),3,2))=da THEN dat#=#MID*(dat
 (n),1,2)+"da#"+#MID*(dat*(n),
 5,4)
 580 NEXT >EJ
 590 LOCATE 32,6:PRINT CHR*(18);dat1 >DT
 \$
 600 LOCATE 2,8:PRINT"Temperature de >KD
 la Journee : ";CHR*(18);INPUT t
 j(n)
 610 IF tj(n)>99 OR tj(n)<-99 THEN 6 >CJ
 00
 620 LOCATE 32,8:PRINT CHR*(18);USIN >MU
 G t*(tj(n)
 630 LOCATE 2,10:PRINT"Etat du ciel >TQ
 : {1}.SOLEIL {2}
 .ECLAIRCIES {3}.COUVERT":LOCATE
 32,11:PRINT"[4].DENI-VOILE {5
 }.BROUILLARD EPAIS"
 640 LOCATE 32,12:PRINT"Votre choix >ZU
 : ";CHR*(18);INPUT cho:IF cho(1 OR
 cho>5 THEN PRINT CHR*(7);GOTO 640
 650 RESTORE 3370:FOR s=1 TO 5:READ >CH
 dal#,da#:IF cho=VAL(dal#) THEN s=5:
 ecl#=#da#
 660 NEXT >EH
 670 IF ecl#=#VOILE" THEN ecl#=#DENI >XC
 -VOILE"
 680 LOCATE 32,10:PRINT CHR*(20);ecl >DT
 \$
 690 ec*(n)=dal#:dal#:#da:=0:da#=# >BL

```

700 IF ec$(n)="5" THEN ec$(n)=ec$(n)PT
)+0*:GOTO 820
710 LOCATE 2,12:PRINT"Etat du Temps >VV
      : (11).PLUVIEUX
(21).NEIGEUX (31).ORAGEUX:LOCATE
36,13:PRINT* (41).SEC
(51).HUMIDE"
720 LOCATE 32,14:PRINT"Votre choix >ZU
: *;CHR$(18);:INPUT cho:IF cho<1 OR
cho>5 THEN PRINT CHR$(7);:GOTO 720
730 IF ec$(n)="1" OR ec$(n)="4" A >FU
ND cho=1 THEN BORDER 6,13:PRINT CHR
$(7);:LOCATE 20,22:PRINT"...CIEL BL
EU OU VOILE AVEC PLUIE IMPOSSIBLE..
.*:FOR t=1 TO 2800:NEXT:BORDER 13:L
OCATE 20,22:PRINT CHR$(18):GOTO 72
0
740 IF ec$(n)="1" OR ec$(n)="4" A >FV
ND cho=2 THEN BORDER 6,13:PRINT CHR
$(7);:LOCATE 20,22:PRINT"...CIEL BL
EU OU VOILE AVEC NEIGE IMPOSSIBLE..
.*:FOR t=1 TO 2800:NEXT:BORDER 13:L
OCATE 20,22:PRINT CHR$(18):GOTO 72
0
750 IF ec$(n)="1" OR ec$(n)="4" A >AJ
ND cho=3 THEN BORDER 6,13:PRINT CHR
$(7);:LOCATE 20,22:PRINT"...CIEL BL
EU OU VOILE ET DRAGE IMPOSSIBLE..
.*:FOR t=1 TO 2500:NEXT:BORDER 13:LOC
ATE 20,22:PRINT CHR$(18):GOTO 720
760 IF tj(n)>5 AND cho=2 THEN BORDE >CB
R 6,13:PRINT CHR$(7);:LOCATE 20,22:
PRINT"...NEIGEUX AVEC";tj(n);"DEGRE
S IMPOSSIBLE...":FOR t=1 TO 2500:NE
XT:BORDER 13:LOCATE 20,22:PRINT CHR
$(18):GOTO 720
770 IF tj(n)<5 AND (cho=1 OR cho=3 >HC
) THEN BORDER 6,13:PRINT CHR$(7);:L
OCATE 20,22:PRINT"...PLUVIEUX A *;t
j(n);" DEGRES IMPOSSIBLE...":FOR t=
1 TO 2500:NEXT:BORDER 13:LOCATE 20,
22:PRINT CHR$(18):GOTO 720
780 RESTORE 3390:FOR s=1 TO 5:READ >CN
da1$,da$:IF cho=VAL(da1$) THEN s=5:
ec1$=da$
790 NEXT >FB
800 LOCATE 32,12:PRINT CHR$(20);ec1 >DN
$
810 ec$(n)=ec$(n)+da1$:da1$="">KC
**cho=0
820 LOCATE 2,14:PRINT"Etat du Vent >EG
      : (11).CALME (2)
      .FORT (31).VIOLENT"
830 LOCATE 32,15:PRINT"Votre choix >ZI
: *;CHR$(18);:INPUT cho:IF cho<1 OR
cho>3 THEN PRINT CHR$(7);:GOTO 830

```

```

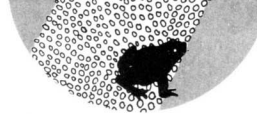
840 RESTORE 3390:FOR s=1 TO 3:READ >CG
da1$,da$:IF cho=VAL(da1$) THEN s=3:
ec1$=da$
850 NEXT >EJ
860 LOCATE 32,14:PRINT CHR$(20);ec1 >DX
$
870 ec$(n)=ec$(n)+da1$:da1$="">KJ
**cho=0
880 GOSUB 990 >KD
890 IF tj(n)<5 AND MID$(ec$(n),2,1) >VY
<>"* THEN LOCATE 2,16:PRINT"Sol en
neige (0/W) *":GOSUB 950
900 LOCATE 22,24:PRINT"Confirmez-vo >MX
us les donnees (0/W)"
910 a$=INKEY$:IF a$="" THEN 910 >XC
920 IF UPPER$(a$)="0" THEN GOTO 220 >BZ
930 IF UPPER$(a$)="*" THEN dat$(n)= >CU
**tj(n)=0:ec$(n)=**d(n)=0:n=m-1:G
OTO 220
940 GOTO 910 >ZK
950 a$=INKEY$:IF a$="" THEN 950 >XL
960 IF UPPER$(a$)="0" THEN d(n)=27: >BD
LOCATE 32,16:PRINT"SOL ENNEIGE*:RET
URN
970 IF UPPER$(a$)="*" THEN LOCATE 3 >WV
2,16:PRINT"SOL NON ENNEIGE*:RETURN
980 GOTO 950 >AH
990 ' >TJ
1000 IF ec$(n)="141" OR ec$(n)="151 >LF
" THEN d(n)=1
1010 IF ec$(n)="142" OR ec$(n)="143 >YT
" OR ec$(n)="152" OR ec$(n)="153" T
HEN d(n)=2
1020 IF ec$(n)="241" THEN d(n)=3 >XP
1030 IF ec$(n)="251" THEN d(n)=4 >XT
1040 IF ec$(n)="211" THEN d(n)=5 >XQ
1050 IF ec$(n)="221" THEN d(n)=6 >XU
1060 IF ec$(n)="231" THEN d(n)=7 >XI
1070 IF ec$(n)="242" OR ec$(n)="243 >MR
" THEN d(n)=8
1080 IF ec$(n)="252" OR ec$(n)="253 >MW
" THEN d(n)=9
1090 IF ec$(n)="212" OR ec$(n)="213 >MB
" THEN d(n)=10
1100 IF ec$(n)="222" OR ec$(n)="223 >ME
" THEN d(n)=11
1110 IF ec$(n)="232" OR ec$(n)="233 >MA
" THEN d(n)=12
1120 IF ec$(n)="341" THEN d(n)=13 >YX
1130 IF ec$(n)="351" THEN d(n)=14 >YA
1140 IF ec$(n)="311" THEN d(n)=15 >YY
1150 IF ec$(n)="321" THEN d(n)=16 >YB
1160 IF ec$(n)="331" THEN d(n)=17 >YE

```

```

1170 IF ec$(n)="342" OR ec$(n)="343 >NT
" THEN d(n)=18
1180 IF ec$(n)="352" OR ec$(n)="353 >NX
" THEN d(n)=19
1190 IF ec$(n)="312" OR ec$(n)="313 >NF
" THEN d(n)=20
1200 IF ec$(n)="322" OR ec$(n)="323 >NA
" THEN d(n)=21
1210 IF ec$(n)="332" OR ec$(n)="333 >NE
" THEN d(n)=22
1220 IF LEFT$(ec$(n),2)=""44" THEN d >FZ
(n)=23
1230 IF LEFT$(ec$(n),2)=""45" THEN d >FC
(n)=24
1240 IF LEFT$(ec$(n),2)=""43" THEN d >FC
(n)=25
1250 IF LEFT$(ec$(n),1)=""5" THEN d >FG
(n)=26
1260 RETURN >FC
1270 BORDER 6,13:PRINT CHR$(7);:LOC >LB
ATE 32,6:PRINT* ...ERREUR...*:F
OR t=1 TO 1500:NEXT:BORDER 13
1280 RETURN >FE
1290 BORDER 6,0:PRINT CHR$(7);:LOCA >FC
TE 21,5:PRINT* ...ERREUR...*:FOR
t=1 TO 1500:NEXT:BORDER 0
1300 RETURN >EH
1310 FOR s=0 TO n-1:IF ddat$=dat$( >ZH
s3) THEN oui=1:s=n-1
1320 NEXT >KH
1330 RETURN >FA
1340 ' >YA
1350 'CONSULTATION >YB
1360 ' >YC
1370 INK 0,0:INK 1,26:INK 2,15:INK >AF
3,15:INK 4,0:INK 5,15:INK 6,15:INK
7,15:INK 8,15:INK 9,15:INK 10,15:IN
K 11,15:INK 12,15:INK 13,15:INK 14,
15:INK 15,15
1380 MODE 1:BORDER 0:PAPER 0:OPEN 1: >FZ
CLS
1390 IF n=0 THEN LOCATE 5,11:PRINT >HY
"...AUCUNE DONNEE EN MEMOIRE...":FOR
t=1 TO 1500:NEXT:GOTO 220
1400 sui=0 >PH
1410 LOCATE 8,1:PRINT"QUEL TEMPS FA >TY
ISAIT-IL ?"
1420 LOCATE 2,5:PRINT"Date (JJMMAAA >KG
A) *";CHR$(18);:INPUT con$
1430 IF con$="" THEN 220 >QL
1440 IF LEN(con$)<8 OR VAL(MID$(con >EU
$,1,2))>31 OR VAL(MID$(con$,3,2))>1
2 OR VAL(MID$(con$,1,2))<0 OR VAL(C
MID$(con$,3,2))<0 OR LEN(con$)>8 T
HEN GOSUB 1290:GOTO 1420
1450 zq=0:FOR v1=1 TO LEN(con$):FOR >LF

```



```

v2=0 TO 9
1460 IF VAL(MID$(CON$,V1,1))=V2 THEN >MB
N ZQ=ZQ+1
1470 NEXT:TEXT:IF ZQ=8 THEN 1480 EL >JF
SE 1420
1480 LOCATE 12,12:PRINT"...UN INSTA >KB
NT..."
1490 FOR S=1 TO N >GB
1500 IF DAT$(S)=CON$ THEN NI=S:SN=: >AH
SUI=1:INK 0,15:INK 1,15:MODE 0:BORD
ER 15:PAPER 11:PEN 4:CLS:LOCATE 4,2
5:PRINT"...UN INSTANT...":ORIGIN 30,2
08:DRAW 580,0,0:DRAW 580,-194:DRAW
0,-194:DRAW 0,0:GOTO 1510 ELSE 1530
1510 ORIGIN 164,14:PLOT 0,0,4:PLOT >DP
R 4,0:PLOT 12,0:PLOT 4,0:PLOT 8,
0:PLOT 4,0:PLOT 16,0:PLOT 4,0:PL
OTR 46,0:PLOT 4,0:PLOT 4,0:PLOT 4,
0:PLOT 4,0:PLOT 4,0:PLOT 8,0:P
LOTR 4,0:PLOT 16,0:PLOT 4,0:PLOT
16,0:PLOT 4,0:PLOT 4,0:PLOT 4,0
1520 PLOT 16,0:PLOT 4,0:PLOT 4,0 >AT
:PLOT 4,0:PLOT 4,0:PLOT 4,0:PLOT
R 16,0:PLOT 4,0:PLOT 4,0:PLOT 4,
0:PLOT 12,0:PLOT 4,0:PLOT 16,0:P
LOTR 4,0:PLOT 12,0:PLOT 4,0:PLOT
4,0:PLOT 4,0:PLOT 4,0:PLOT 4,0
1530 NEXT:IF SUI=0 THEN LOCATE 1,5: >MC
PRINT CHR$(19);CHR$(18);" !!
! AUCUNE DONNEE !!!:GOTO 1660
1540 WINDOW#2,2,19,13,24:PAPER#2,2: >KT
PEN#2,1
1550 GRAPHICS PAPER 11:RESTORE 3400 >UC
:FOR S=1 TO 12:READ DA,DA$:IF VAL(M
ID$(DAT$(N1),3,2))=DA THEN GOSUB 17
20:S=12:TAG:ORIGIN 320-13,394:PLOT
0,0,2:PRINT LEFT$(DAT$(N1),2)*" +d
a$*" +RIGHT$(DAT$(N1),4):TAGOFF:1
3=0
1560 NEXT >LD
1570 DA=0:DA$="":RESTORE 3370:FOR S >UM
=1 TO 5:READ DA,DA$:IF VAL(LEFT$(EC
$(N1),1))=DA THEN CIEL#=$0$(S):S=5
1580 NEXT:IF LEFT$(EC$(N1),1)=$" T >FU
HEN TEM#=$0$(10):GOTO 1610
1590 DA=0:DA$="":RESTORE 3380:FOR S >XA
=1 TO 5:READ DA,DA$:IF VAL(MID$(EC
$(N1),2,1))=DA THEN TEM#=$0$(S+5):S=
5
1600 NEXT >KJ
1610 DA=0:DA$="":RESTORE 3390:FOR S >QB
=1 TO 3:READ DA,DA$:IF VAL(MID$(EC
$(N1),3,1))=DA THEN VEN#=$0$(S+10)
1620 NEXT >LA
1630 GOSUB 1670 >IG
1640 IF SAI#="ETE" OR SAI#="PRINTEN" >WZ

```

```

PS" THEN GOTO 3410
1650 IF SAI#="AUTOMNE" OR SAI#="HIV >WJ
ER" THEN GOTO 3520
1660 FOR T=1 TO 1500:NEXT:GOTO 1340 >BD
1670 IF (MID$(DAT$(N1),3,2))=$" AN >WA
D VAL(MID$(DAT$(N1),1,2))=20) OR M
ID$(DAT$(N1),3,2)=$"01" OR MID$(DAT$
(N1),3,2)=$"02" OR (MID$(DAT$(N1),3,
2)=$"03" AND VAL(MID$(DAT$(N1),1,2)
<20) THEN SAI#="HIVER":C7=1:15=192:
GOTO 1710
1680 IF (MID$(DAT$(N1),3,2)=$"03" AN >JX
D VAL(MID$(DAT$(N1),1,2))=20) OR M
ID$(DAT$(N1),3,2)=$"04" OR MID$(DAT$
(N1),3,2)=$"05" OR (MID$(DAT$(N1),3,
2)=$"06" AND VAL(MID$(DAT$(N1),1,2)
<21) THEN SAI#="PRINTEMPS":C7=5:15=
128:GOTO 1710
1690 IF (MID$(DAT$(N1),3,2)=$"06" AN >PJ
D VAL(MID$(DAT$(N1),1,2))=21) OR M
ID$(DAT$(N1),3,2)=$"07" OR MID$(DAT$
(N1),3,2)=$"08" OR (MID$(DAT$(N1),3,
2)=$"09" AND VAL(MID$(DAT$(N1),1,2)
<22) THEN SAI#="ETE":C7=5:15=224:GO
TO 1710
1700 SAI#="AUTOMNE":C7=7:15=160 >AK
1710 RETURN >FC
1720 13=LEN(DA$)*32:IF 13=96 THEN 1 >HC
3=160 ELSE IF 13=288 THEN 13=272 EL
SE IF 13=256 THEN 13=256 ELSE IF 13
=128 THEN 13=192 ELSE IF 13=224 THE
N 13=240 ELSE 13=208
1730 RETURN >FE
1740 ' >YF
1750 'NOYENNE >YF
1760 ' >YG
1770 DIM TDA(12,5),TDA1(12,5),TDA2( >EH
12,3),TJ(12),NTJ(12),SSO(12),PL(1
2),NG(12)
1780 BORDER 15:MODE 2:INK 0,0:INK 1 >JE
,15:CLS
1790 LOCATE 21-(LEN($)/2),1:PRINT >R
CHR$(24);" MOTENNE ET DOMINANTE PAR
MOIS-ANNEE ";F$;" ";CHR$(24)
1800 LOCATE 30,11:PRINT"UN INSTANT >YJ
JE CALCULE"
1810 FOR S=1 TO N:S1=VAL(MID$(DAT$( >KB
S1,3,2))
1820 TDA(S1,VAL(LEFT$(EC$(S1),1)))=0 >PF
:TDA1(S1,VAL(MID$(EC$(S),2,1)))=0:T
DA2(S1,VAL(MID$(EC$(S),3,1)))=0:TJ
(S1)=0:NTJ(S1)=0:SSO(S1)=0:PL(S1)=0
:NG(S1)=0
1830 NEXT >LD

```

```

1840 FOR S=1 TO N >GA
1850 S1=VAL(MID$(DAT$(S),3,2)) >YJ
1860 TDA(S1,VAL(LEFT$(EC$(S),1)))=T >LX
DA(S1,VAL(LEFT$(EC$(S),1)))=1
1870 TDA1(S1,VAL(MID$(EC$(S),2,1))) >QM
=TDA1(S1,VAL(MID$(EC$(S),2,1)))=1
1880 TDA2(S1,VAL(MID$(EC$(S),3,1))) >QT
=TDA2(S1,VAL(MID$(EC$(S),3,1)))=1
1890 TJ(S1)=TJ(S1)+TJ(S):NTJ(S1)= >PU
NTJ(S1)+1
1900 IF MID$(EC$(S),1,1)=$"1" OR MID >YT
$(EC$(S),1,1)=$"4" THEN SSO(S1)=SSO
(S1)+1
1910 IF MID$(EC$(S),2,1)=$"1" OR MID >TZ
$(EC$(S),2,1)=$"3" THEN PL(S1)=PL
(S1)+1
1920 IF MID$(EC$(S),2,1)=$"2" THEN N >QP
G(S1)=NG(S1)+1
1930 NEXT >LE
1940 FOR S=1 TO 12 >LU
1950 FOR S=1 TO 5:IF TDA(S1,0)TDA >LB
(S1,S) THEN TDA(S1,0)=TDA(S1,S)
1960 NEXT >LH
1970 FOR S=1 TO 5:IF TDA1(S1,0)TDA >QW
1(S1,S) THEN TDA1(S1,0)=TDA1(S1,S)
1980 NEXT >LK
1990 FOR S=1 TO 3:IF TDA2(S1,0)TDA >QA
2(S1,S) THEN TDA2(S1,0)=TDA2(S1,S)
2000 NEXT >KD
2010 NEXT >KE
2020 LOCATE 1,3:PRINT CHR$(20):GOSU >HG
B 4040
2030 RESTORE 3400:FOR S=1 TO 12:RE >KM
AD DA,DA$
2040 IF TDA(S1,0)=0 OR TDA1(S1,0)=0 >HP
OR TDA2(S1,0)=0 THEN GOTO 2170
2050 LOCATE 3,S1+6:PRINT DA$>LOCATE >WQ
15,S1+6:PRINT USING"###.##";ROUND(
TJ(DA)/NTJ(DA),1)
2060 RESTORE 3370:FOR S=1 TO 5:READ >MQ
DA10,DA10#
2070 IF TDA(S1,0)=TDA(S1,S) THEN LO >AB
CATE 23,S1+6:PRINT STRING$(13,128):
LOCATE 23,S1+6:PRINT MID$(DA10#,1,1
0)
2080 NEXT
2090 DA10=0:DA10#="":RESTORE 3380:F >FG
OR S=1 TO 5:READ DA10,DA10#
2100 IF TDA1(S1,0)=TDA1(S1,S) THEN >JF
LOCATE 39,S1+6:PRINT STRING$(8,128)
:LOCATE 39,S1+6:PRINT DA10#
2110 NEXT >KF
2120 DA10=0:DA10#="":RESTORE 3390:F >PZ
OR S=1 TO 3:READ DA10,DA10#
2130 IF TDA2(S1,0)=TDA2(S1,S) THEN >HE
LOCATE 50,S1+6:PRINT STRING$(8,128)

```

```

:LOCATE 50,s1+6:PRINT da10#
2140 NEXT >KJ
2150 LOCATE 62,s1+6:PRINT USING### >CT
;ss(s1):LOCATE 69,s1+6:PRINT USING
###;pl(s1):LOCATE 76,s1+6:PRINT US
ING###;ng(s1);
2180 RESTORE 3400:FOR s2=1 TO s1:RE >TH
AD da,da#;NEXT
2170 NEXT >LB
2180 tsso=0:tpl=0:tng=0:FOR s=1 TO >CG
12:tsso=tsso+ss(s):tpl=tpl+pl(s):t
ng=tng+ng(s);NEXT
2190 ttj=0:FOR s=1 TO n:ttj=ttj+tj(>B
s):NEXT:ttj=ttj/n:LOCATE 15,20:PRIN
T USING###.##;ROUND(ttj,1):ttj=0
2200 LOCATE 23,20:PRINT"XXXXXXXXXX" >XP
"X" LOCATE 38,20:PRINT"XXXXXXXXXX"
LOCATE 50,20:PRINT"XXXXXXXXX":LOCATE
61,20:PRINT USING###;tsso:LOCATE
68,20:PRINT USING###;tpl:LOCATE 7
5,20:PRINT USING###;tng
2210 ERASE tda,tda1,tda2,ttj,ntj,ss >NR
0,pl,ng
2220 PRINT CHR$(7);:LOCATE 31,24:PR >FK
INT"UNE TOUCHE S.V.P.":CALL &BBOG:G
OTO 220
2230 ' >XK
2240 'LISTER >YA
2250 ' >YB
2260 CLS:LOCATE 33,2:PRINT CHR$(24) >FT
;" L I S T E R ";CHR$(24)
2270 LOCATE 3,5:PRINT"A partir de q >EB
uel Mois ";CHR$(18);:INPUT am:IF a
m=0 OR am>12 THEN 2270
2280 LOCATE 1,3:PRINT CHR$(20):GOSU >JF
B 2410
2290 h=7:FOR s=1 TO n:IF VAL(MID$(d >DX
at$(s),3,2))<am THEN 2390
2300 h=h+1:IF h=22 THEN PRINT CHR$( >QX
7);:LOCATE 15,25:PRINT"Une touche p
our tourner la page [R]etour Men
u":h=8:CALL &BBOG:IF INKEY(50)O=1
THEN 220 ELSE LOCATE 1,4:PRINT CHR$
(20):GOSUB 2410
2310 LOCATE 3,h:PRINT USING###;s >CY
2320 LOCATE 8,h:PRINT MID$(dat$(s), >MD
1,2)*"."+MID$(dat$(s),3,2)*"."+MID$(
dat$(s),5,4):LOCATE 21,h:PRINT USI
NG###.### dgrs;tj(s)
2330 RESTORE 3370:FOR s1=1 TO 5:REA >MP
D da1#,da#:IF MID$(ec$(s),1,1)=da1#
THEN s1=4:LOCATE 35,h:PRINT da#
2340 NEXT >LA
2350 RESTORE 3360:FOR s1=1 TO 5:REA >MV
D da1#,da#:IF MID$(ec$(s),2,1)=da1#
THEN s1=5:LOCATE 54,h:PRINT da#
2360 NEXT >LC
2370 RESTORE 3390:FOR s1=1 TO 3:REA >NB
D da1#,da#:IF MID$(ec$(s),3,1)=da1#
THEN s1=3:LOCATE 68,h:PRINT da#
2380 NEXT >LE
2390 NEXT >HF
2400 PRINT CHR$(7);:LOCATE 31,25:PR >LX
INT"Une touche S.V.P.":CALL &BBOG:G
OTO 220
2410 LOCATE 3,6:PRINT"Mo DATE >EV
TEMPERATURE CIEL
TEMPS VENT"
2420 ORIGIN 4,328:DRAW 634,0:DRAW 6 >FX
34,-272:DRAW 0,-272:DRAW 0,0:ORIGIN
4,296:DRAW 634,0:ORIGIN 48,328:DR
AW 0,-272:PLOTTR 100,0:DRAW 0,272:P
LOTTR 112,0:DRAW 0,-272:PLOTTR 152,0
:DRAW 0,272:PLOTTR 112,0:DRAW 0,-2
72
2430 RETURN >FC
2440 ' >YC
2450 'CHARGEMENT >YD
2460 ' >YE
2470 CLS:ORIGIN 210,386:DRAW 202,0, >ZJ
0:DRAW 202,-22:DRAW 0,-22:DRAW 0,0:
LOCATE 28,2:PRINT CHR$(24);" CHARGE
MENT DES DONNEES ";CHR$(24)
2480 LOCATE 2,6:PRINT"Entrez l'Anne >YX
e (AAAA) ";CHR$(18);:INPUT f#;IF L
EN(f#)>4 THEN 2590
2490 CLS:LOCATE 19,11:PRINT" C H A >PJ
R G E M E N T E N C O U R S "
2500 OPENIN f#+".MET" >PU
2510 INPUT#9,n:FOR s=1 TO n >VV
2520 INPUT#9,dat$(s),tj(s),ec$(s),d >MC
(s):NEXT
2530 CLOSEIN >MA
2540 nn=n:GOTO 220 >MZ
2550 ' >YE
2560 'SAUVEGARDE >YF
2570 ' >YG
2580 CLS:ORIGIN 210,386:DRAW 202,0, >ZW
0:DRAW 202,-22:DRAW 0,-22:DRAW 0,0:
LOCATE 28,2:PRINT CHR$(24);" SAUVEG
ARDE DES DONNEES ";CHR$(24)
2590 LOCATE 2,6:PRINT"Entrez l'Anne >YZ
e (AAAA) ";CHR$(18);:INPUT f#;IF L
EN(f#)>4 THEN 2590
2600 CLS:LOCATE 19,11:PRINT" S A U >RM
V E G A R D E E N C O U R S "
2610 IF f#="" THEN 220 ELSE OPENOUT >KH
f#+".MET"
2620 WRITE#9,n:FOR s=1 TO n >VT
2630 WRITE#9,dat$(s),tj(s),ec$(s),d >MZ
(s):NEXT
2640 CLOSEOUT >ZC
2650 nn=n:GOTO 220 >NB
2660 ' >YG
2670 'DESSINS >YH
2680 ' >YJ
2690 'MUAGE >YK
2700 ORIGIN x,192:DRAW 4,0,c6:DRAW >LT
4,-2:DRAW 4,-2:DRAW 12,-2:DRAW
10,2:DRAW 4,0:DRAW 12,6:DRAW 10,
4:DRAW 10,2:DRAW 6,-4:DRAW 10,-1
0
2710 DRAW 8,-4:DRAW 6,-4:DRAW 4, >KC
-6:DRAW 2,-10:DRAW -4,-4:DRAW -6
-2:DRAW -4,0:DRAW -4,-4:DRAW -6
-2:DRAW -4,0:DRAW -6,-4:DRAW -4
-2:DRAW -2,2:DRAW -6,0
2720 DRAW -6,2:DRAW -4,2:DRAW -4 >FR
0:DRAW -4,4:DRAW -2,6:DRAW -6,-
2:DRAW -6,-2:DRAW -4,-2:DRAW -6,
-2:DRAW -6,2:DRAW -6,-2:DRAW -4,2
:DRAW -4,4:DRAW -4,6:DRAW -4,6
2730 DRAW 2,6:DRAW 2,4:DRAW 2,4: >LL
DRAW 2,2
2740 ORIGIN x+10,160:FILL c6 >MY
2750 IF cv1=1 AND s=1 THEN cv1=0:GO >JJ
SUB 3200
2760 RETURN >FJ
2770 'SOLEIL >YJ
2780 DEG:ORIGIN 564,174:FOR i=1 TO >JP
360 STEP 6:PLOT 20+SIN(i),20+COS(i)
,3:NEXT:RAD
2790 ORIGIN 566,172:FILL 3 >UR
2800 DEG:FOR i=1 TO 360 STEP 30:ORI >HY
GIN 564,174:DRAW 26+SIN(i),26+COS(i)
):NEXT:RAD
2810 RETURN >FE
2820 'PLUIE >YE
2830 cc=13:xi=0:yi=0:FOR i=1 TO 9:x >AG
1=x+14:FOR i=1156 TO 72 STEP -14:c
c=cc+1:IF cc=16 THEN cc=14
2840 yi=(RND#-18)+i:ORIGIN +x+i,11+ >JL
yi:DRAW -8,-6,cc:NEXT:NEXT
2850 RETURN >FJ
2860 'HORIZON >YJ
2870 ORIGIN 32,46:DRAW 574,0,c4:DRAW >MA
W 574,-30:DRAW 0,-30:DRAW 0,0:ORIGI
N 36,44:FILL c4
2880 RETURN >GB
2890 'ARBRE(ETE-PRINTTEMPS) >ZB
2900 PEN#2,cl:LOCATE#2,3,9:PRINT#2, >YC
CHR$(240):LOCATE#2,3,9:PRINT#2,CHR$
(241):PEN#2,0:LOCATE#2,3,10:PRINT#2
,CHR$(242):PEN#2,cl:LOCATE#2,5,8:PR

```

```

INT#2,CHR*(240):LOCATE#2,5,9:PRINT#
2,CHR*(241):PEN#2,0:LOCATE#2,5,10:P
RINT#2,CHR*(242)
2910 PEN#2,c2:LOCATE#2,10,9:PRINT#2 >DA
,r1d#PEN#2,12:LOCATE#2,10,10:PRINT#
2,d2#
2920 PEN#2,1:RETURN >PL
2930 'FUMEE >YG
2940 IF d(n1)=6 OR d(n1)=11 OR d(n1) >MZ
)=16 OR d(n1)=21 THEN c5=0 ELSE c5=
1
2950 ORIGIN 370,82:DRAW -10,6,c5:RE >HK
TURN
2960 'NEIGE >YK
2970 cc=13:x1=0:y1=0:FOR i=1 TO 8: >BG
i=x1+14:FOR j1=156 TO 58 STEP -14:c
c=cc+1:IF cc=16 THEN cc=14
2980 y1=(RND*12)+1:ORIGIN x-16+x1 >BG
((RND*6)+1),11+y1:PLOT 0,0,cc:NEXT:
NEXT
2990 RETURN >GD
3000 'ORAGE >XF
3010 x1=24:FOR i=1 TO 2:x1=x1+32:OR >EE
IGIN x+1,178:DRAWR -22,-24,1:DRAWR
30,16:DRAWR -18,-24:NEXT
3020 x=450:GOSUB 2820 >PJ
3030 RETURN >EK
3040 'ARBRE(HIVER-AUTOMNE) >XK
3050 PEN#2,c1:LOCATE#2,3,8:PRINT#2 >YE
CHR*(247):LOCATE#2,3,9:PRINT#2,CHR*
(248):PEN#2,0:LOCATE#2,3,10:PRINT#2
,CHR*(242):PEN#2,c1:LOCATE#2,5,8:PR
INT#2,CHR*(247):LOCATE#2,5,9:PRINT#
2,CHR*(248):PEN#2,0:LOCATE#2,5,10:P
RINT#2,CHR*(242)
3060 RETURN >FC
3070 'THERMO >YC
3080 ORIGIN 76,294:DRAWR 0,h1,9:PLO >XN
TR 6,0:DRAWR 0,-h1
3090 RETURN >FF
3100 'VENT >XG
3110 ORIGIN 596,272:DRAWR 0,64,0:DR >JB
AWR -96,-8:PLOTR 0,-4:DRAWR 96,-8:P
LOTR -20,2:DRAWR 0,16:PLOTR -20,-2:
DRAWR 0,-12:PLOTR -20,2:DRAWR 0,8:P
LOTR -20,-2:DRAWR 0,-4:PLOTR -20,2
3120 ORIGIN 592,328:FILL 9:ORIGIN 5 >KJ
72,328:FILL 1:ORIGIN 552,328:FILL 9
:ORIGIN 532,328:FILL 1:ORIGIN 512,3
28:FILL 9
3130 RETURN >FA
3140 ORIGIN 596,272:DRAWR 0,64,0:DR >HJ
AWR -16,-8:DRAWR -40,-40:DRAWR 0,-6
:DRAWR 40,22:DRAWR 16,10:PLOTR -10,
-5:DRAWR -4,18:PLOTR -12,-8:DRAWR 4
,-18:PLOTR -12,-8:DRAWR -4,10:PLOTR

```

```

-12,-8:DRAWR 2,-10
3150 ORIGIN 592,314:FILL 9:ORIGIN 5 >KT
78,312:FILL 1:ORIGIN 566,300:FILL 9
:ORIGIN 554,296:FILL 1:ORIGIN 544,2
86:FILL 9
3160 RETURN >FD
3170 ORIGIN 596,272:DRAWR 0,64,0:DR >AK
AWR -20,-8:DRAWR -8,-50:DRAWR 10,0:
DRAWR 10,36:DRAWR 10,0:PLOTR -10,0:
DRAWR -8,18:PLOTR -6,-16:DRAWR 12,-
12:PLOTR -6,-10:DRAWR -8,8:PLOTR -6
,-12:DRAWR 10,-4
3180 ORIGIN 594,318:FILL 9:ORIGIN 5 >KH
84,312:FILL 1:ORIGIN 582,308:FILL 9
:ORIGIN 582,292:FILL 1:ORIGIN 578,2
84:FILL 9
3190 RETURN >FG
3200 'COUVERT >XH
3210 ORIGIN 32,206:DRAW 574,0,0:DR >LH
W 574,-38:DRAW 0,-38:DRAW 0,0:ORIGI
N 36,204:FILL 0
3220 RETURN >FA
3230 'FLEURS >YA
3240 x1=0:y1=0:FOR s=1 TO 34:x1=(RN >MX
D*30)+1:y1=(RND*22)+1:ORIGIN 96+x1,1
68+y1:PLOTR 0,0,10:NEXT:FOR s=1 TO
34:x1=(RND*30)+1:y1=(RND*22)+1:ORIG
IN 160+x1,68+y1:PLOTR 0,0,10:NEXT
3250 RETURN >FD
3260 'FEUILLES >YD
3270 x1=0:y1=0:FOR s=1 TO 14:x1=(RN >RT
D*36)+1:y1=(RND*10)+1:ORIGIN 92+x1,1
38+y1:PLOTR 0,0,9:x1=(RND*36)+1:y1=
(RND*10)+1:ORIGIN 156+x1,38+y1:PLO
TR 0,0,9:NEXT
3280 RETURN >FG
3290 'VOILE >YG
3300 ORIGIN x,192:DRAW 4,0,c8:DRAWR >MB
4,-2:DRAWR 4,-2:DRAWR 12,-2:DRAWR
10,2:DRAWR 4,0:DRAWR 12,6:DRAWR 10,
4:DRAWR 10,2:DRAWR 6,-4:DRAWR 10,-1
0:DRAWR 8,-4:DRAWR 6,-4:DRAWR -4,0:
DRAWR -4,-4
3310 DRAWR -90,0:DRAWR -6,4:DRAWR - >CU
4,4:DRAWR 4,4:DRAWR 6,4
3320 ORIGIN x+6,186:FILL 13:RETURN >CW
3330 'BROUILLARD >YB
3340 y=208:FOR s=1 TO 18:y=y+((RND >PK
14)+1)*x-22:FOR s1=1 TO 8:x=x+(58+
(RND*20)+1):ORIGIN x,y:DRAW 50,2,13
:NEXT:NEXT
3350 RETURN >FE
3360 'DATAS >YE

```

```

3370 DATA 1,SOLEIL,2,ECLAIRCIES,3,C >KU
OUVERT,4,'DEMI-VOILE',5,'BROUILLARD
EPAIS'
3380 DATA 1,PLUVIEUX,2,NEIGEUX,3,OR >EV
AGEUX,4,SEC,5,HUMIDE
3390 DATA 1,CALME,2,FORT,3,VIOLENT >DH
3400 DATA 1,JANVIER,2,FEBVIER,3,MAR >PH
5,4,AVRIL,5,MAI,6,JUIN,7,JUILLET,8,
AOUT,9,SEPTEMBRE,10,OCTOBRE,11,NOVE
MBRE,12,DECEMBRE
3410 'COULEURS >YA
3420 IF d(n1)=27 THEN pr=27:n10=n:n >FV
=n1:GOSUB 990:n=n10:n10=0
3430 IF (d(n1)>0 AND d(n1)<6) OR (d >JF
(n1)>6 AND d(n1)<11) OR d(n1)=12 TH
EN c1=5:c2=7:c4=5
3440 IF d(n1)<5 OR d(n1)=8 OR d(n1) >VD
=9 THEN c6=2 ELSE c6=0
3450 IF (d(n1)>12 AND d(n1)<16) OR >NB
(d(n1)>16 AND d(n1)<21) OR d(n1)=22
THEN c1=5:c2=7:c4=5
3460 IF (d(n1)<13 OR d(n1)=23 OR d >NZ
n1)=24 OR d(n1)=25) THEN c3=6:c1=5:
c2=7:c4=5 ELSE c3=2:c1=5:c2=7:c4=5
3470 IF d(n1)=6 OR d(n1)=11 OR d(n1) >NA
)=16 OR d(n1)=21 THEN c1=1:c2=1:c4=
1
3480 IF d(n1)=23 OR d(n1)=24 OR d(n >QE
1)=25 THEN c8=13
3490 IF d(n1)=26 THEN c3=2 >YA
3500 IF pr=27 THEN c1=1:c2=1:c4=1 >ZV
3510 GOTO 3630 >MJ
3520 'COULEUR >YC
3530 IF d(n1)=27 THEN pr=27:n10=n:n >FX
=n1:GOSUB 990:n=n10:n10=0
3540 IF (d(n1)>0 AND d(n1)<6) OR (d >JK
(n1)>6 AND d(n1)<11) OR d(n1)=12 TH
EN c1=7:c2=7:c4=5
3550 IF d(n1)<5 OR d(n1)=8 OR d(n1) >WF
=9 THEN c6=2 ELSE c6=0
3560 IF (d(n1)>12 AND d(n1)<16) OR >NF
(d(n1)>16 AND d(n1)<21) OR d(n1)=22
THEN c1=7:c2=7:c4=5
3570 IF (d(n1)<13 OR d(n1)=23 OR d >NF
n1)=24 OR d(n1)=25) THEN c3=6:c1=7:
c2=7:c4=5 ELSE c3=2:c1=7:c2=7:c4=5
3580 IF d(n1)=6 OR d(n1)=11 OR d(n1) >XC
)=16 OR d(n1)=21 THEN c1=1:c2=1:c4=
1
3590 IF d(n1)=23 OR d(n1)=24 OR d(n >QG
1)=25 THEN c8=13
3600 IF d(n1)=26 THEN c3=2 >TT
3610 IF pr=27 THEN c1=1:c2=1:c4=1 >ZX
3620 GOTO 3630 >NA
3630 'VISUALISATION >YE
3640 SPEED INK 5,5 >LY

```


3650 WINDOW#3,2,19,3,8:PAPER#3,13:P >ZA
EN#3,1:CLS#3:ORIGIN 30,368:DRAW 580
,0,0:DRAW 580,-98:DRAW 0,-98:DRAW 0
,0

3660 PAPER#2,c3:CLS#2:PEN#3,0:GRAPH >HQ
ICS PAPER 13:TAG#3:ORIGIN 36,364:PL
OT 0,0,0:PRINT#3,so#(14):ORIGIN 49
6,364:PLOT 0,0,0:PRINT#3,so#(15):;T
AGOFF#3

3670 LOCATE#3,15,4:PRINT#3,ven#3:PEN >FX
#3,1:LOCATE#3,2,3:PRINT#3,CHR#(249)
:LOCATE#3,2,4:PRINT#3,CHR#(251):LOC
ATE#3,2,5:PRINT#3,CHR#(250)

3680 ORIGIN 218,272:DRAW 0,96:PLOT >YL
R 230,0:DRAW 0,-96

3690 GRAPHICS PAPER 13:PEN#3,0:TAG# >AW
3:ORIGIN 256,358:PLOT 0,0,0:PRINT#3
,*TEMPS*;TAGOFF#3:LOCATE#3,8,3:PRI
NT#3,cie#3:LOCATE#3,8,4:PRINT#3,tem
#

3700 IF tj(n1)<0 THEN h=5:PEN#3,9 >JJ
ELSE IF (tj(n1))>0 AND tj(n1)<15) TH
EN h=4:PEN#3,1 ELSE h=3:PEN#3,5
3710 LOCATE#3,3,h:PRINT#3,USING### >RU
* ;tj(n1):h=0

3720 IF tj(n1)<4 THEN h1=8 ELSE IF >WM
(tj(n1))-3 AND tj(n1)<0) THEN h1=
10 ELSE IF (tj(n1))>24 THEN h1=34 EL
SE h1=10+INT(tj(n1))

3730 GOSUB 3080 >XG

3740 GRAPHICS PAPER 11:TAG:FOR s=1 >QA
TO LEN(sai#):ORIGIN (s#64+15)-(LEN(
sai#)*32/2),248:PLOT 0,0,c7:PRINT M
ID#(sai#,s,1)+*";NEXT:TAGOFF:GRAP
HICS PEN 0,0

3750 GOSUB 2860:IF sai#="ETE" OR sa >XF
i#="PRINTTEMPS" THEN GOSUB 2890 ELSE
GOSUB 3040:GOSUB 2910

3760 IF sai#="PRINTTEMPS" THEN GOSUB >HA
3230

3770 IF c#1 THEN 3780 ELSE IF sai# >DN
="AUTOMNE" THEN GOSUB 3260

3780 IF RIGHT\$(ec#(n1),1)="#1" THEN >RX
GOSUB 3170 ELSE IF RIGHT\$(ec#(n1),1
)=#2" THEN GOSUB 3140 ELSE GOSUB 31
00

3790 IF tj(n1)<17 THEN GOSUB 2930 >ZK
3800 IF d(n1)=26 THEN GOSUB 3330:GD >HW
TO 3970

3810 IF d(n1)=1 OR d(n1)=2 THEN GOS >GM
UB 2770

3820 IF d(n1)=3 OR d(n1)=4 THEN GOS >MP
UB 2770:x=-80:FOR s=1 TO 4:x=x+140:
GOSUB 2690:NEXT

3830 IF d(n1)=5 THEN GOSUB 2770:x=- >YF
80:FOR s=1 TO 4:x=x+140:GOSUB 2690:

NEXT:x=450:GOSUB 2820

3840 IF d(n1)=6 THEN GOSUB 2770:x=- >YR
80:FOR s=1 TO 4:x=x+140:GOSUB 2690:
NEXT:x=480:GOSUB 2960

3850 IF d(n1)=7 THEN GOSUB 2770:x=- >NR
80:FOR s=1 TO 4:x=x+140:GOSUB 2690:
NEXT:GOSUB 3000

3860 IF d(n1)=8 OR d(n1)=9 THEN GOS >ME
UB 2770:x=-80:FOR s=1 TO 4:x=x+140:
GOSUB 2690:NEXT

3870 IF d(n1)=10 THEN GOSUB 2770:x= >ZQ
-80:FOR s=1 TO 4:x=x+140:GOSUB 2690
:NEXT:x=450:GOSUB 2820

3880 IF d(n1)=11 THEN GOSUB 2770:x= >ZB
-80:FOR s=1 TO 4:x=x+140:GOSUB 2690
:NEXT:x=480:GOSUB 2960

3890 IF d(n1)=12 THEN GOSUB 2770:x= >PV
-80:FOR s=1 TO 4:x=x+140:GOSUB 2690
:NEXT:GOSUB 3000

3900 IF d(n1)=13 OR d(n1)=14 OR d(n >ZA
1)=18 OR d(n1)=19 THEN cv1=1:x=-60:
FOR s=1 TO 5:x=x+110:GOSUB 2690:NEXT
T:x=0

3910 IF d(n1)=15 OR d(n1)=20 THEN c >GP
v1=1:x=-60:FOR s=1 TO 5:x=x+110:GOS
UB 2690:x=x-10:GOSUB 2820:x=x+10:NE
XT:x=0

3920 IF d(n1)=16 THEN cv1=1:x=-60:F >PW
OR s=1 TO 5:x=x+110:GOSUB 2690:GOSU
B 2960:NEXT:x=0

3930 IF d(n1)=17 THEN cv1=1:x=-60:F >HP
OR s=1 TO 5:x=x+110:GOSUB 2690:NEXT
:GOSUB 3000

3940 IF d(n1)=21 THEN cv1=1:x=-60:F >PU
OR s=1 TO 5:x=x+110:GOSUB 2690:GOSU
B 2960:NEXT:x=0

3950 IF d(n1)=22 THEN cv1=1:x=-60:F >PA
OR s=1 TO 5:x=x+110:GOSUB 2690:NEXT
:GOSUB 3000:x=0

3960 IF d(n1)=23 OR d(n1)=24 OR d(n >AL
1)=25 THEN GOSUB 2770:x=0:FOR s=1 T
O 3:x=x+160:GOSUB 3300:NEXT:IF LEFT
\$(ec#(n1),2)="#A3" THEN GOSUB 3000

3970 PEN 1,1:LOCATE 1,25:PRINT CHR# >GM
(18):PEN 1,0:INK 0,0:INK 1,26:INK 2
,1:INK 3,24:INK 4,0:INK 5,9:INK 6,1
1:INK 7,3:INK 8,23:INK 9,6:INK 10,1
6:INK 11,15:INK 12,20:INK 13,13:ORI
GIN 32,16:DRAW 572,0,0

3980 IF c#2 THEN cc1=1 ELSE cc1=11 >AG
3990 IF MID\$(ec#(n1),2,1)="#1" OR HI >QG
D\$(ec#(n1),2,1)="#3" THEN cc3=0 ELSE
IF MID\$(ec#(n1),2,1)="#2" THEN cc3=

26

4000 INK 14,cc1,cc3:INK 15,cc3,cc1 >AK
4010 IF MID\$(ec#(n1),1,1)<#5" THEN >LH
GOSUB 2910

4020 IF pr=27 THEN d(n1)=27:pr=0 >ZC
4030 CALL @BB06:SPED INK 10,10:GOT >FT
0 220

4040 TABLEAU >YA
4050 GRAPHICS PAPER 1:ORIGIN 25,344 >ZP
:TAG:PLOT 0,0,0:PRINT"M 0 I S";:PLO
TR 24,8:PRINT"TEMPER.";:PLOTR -56,-
16:PRINT"MOYENNE";:PLOTR 32,8:PRINT
"ETAT CIEL";

4060 PLOTR 32,0:PRINT"ETAT TEMPS"; >LN
PLOTR 28,0:PRINT"VENT";:PLOTR 44,8:
PRINT"OMBRE DE JOURS";:PLOTR -136,
-16:PRINT"SOLEIL PLUIE NEIGE";:TA
G OFF

4070 ORIGIN 8,360:DRAW 626,0:DRAW 6 >VW
26,-288:DRAW 0,-288:DRAW 0,0:ORIGIN
8,312:DRAW 626,0:ORIGIN 8,104:DRAW
626,0:ORIGIN 8,72:DRAW 626,0

4080 ORIGIN 96,72:DRAW 0,288:ORIGIN >UH
168,72:DRAW 0,288:ORIGIN 288,72:DR
AW 0,288:ORIGIN 384,72:DRAW 0,288:0
RIGIN 456,72:DRAW 0,288:ORIGIN 520,
72:DRAW 0,264:ORIGIN 576,72:DRAW 0,
276

4090 LOCATE 3,20:PRINT"ANNEE" >YR
4100 RETURN >EJ

4110 >XJ

4120 'TRAITEMENT ERREURS >XK
4130 >YA

4140 IF ERL=2500 THEN CLS:LOCATE 28 >WD
,11:PRINT"...FICHER IMEXISTANT..."
:FOR t=1 TO 1500:NEXT:RESUME 2470

4150 IF ERR=11 THEN RESUME NEXT >ZZ
4160 IF (ERR=13 AND ERL=520) OR (ER >QJ
R=13 AND ERL=1460) THEN RESUME NEXT

4170 CLS:PRINT"Erreur No #;ERR; LI >YR
GNE #;ERL:END
4180 ----- >YF

4190 CLS:IF mn<n THEN LOCATE 10,11: >GM
PRINT"...ATTENTION VOUS AVEZ EFFECT
UE DE NOUVEAU ENREGISTREMENTS...".L
OCATE 25,13:PRINT"VOULEZ-VOUS LES S
AUVEGARDER O/M":GOTO 4200 ELSE 4220
4200 a#="INKEY\$:IF a#="" THEN 4200 >YF
4210 IF UPPER\$(a#)="#0" THEN 220 ELS >FX
E 4250

4220 CLS:LOCATE 25,11:PRINT"CONFIRM >CL
ATTION QUITTER O/M"

4230 a#="INKEY\$:IF a#="" THEN 4230 >ZD
4240 IF UPPER\$(a#)="#0" THEN 4250 EL >FY
SE 220

4250 CALL 0 >NG△