

BAM

Je pense qu'avec les listings que nous avons publiés les mois passés, en ce qui concerne les utilitaires, vous êtes pleins aux as. Donc changeons de registre et passons à nos premières amours. Le programme du mois (un jeu) nous est proposé par Dominique Roux-Serret, auteur du fabuleux jeu ATC. Cette fois, vous avez entre les mains un petit bijou en trois dimensions qui vous donnera du fil à retordre.

Vous incarnez le rôle d'une petite grenouille qui s'ennuyait à force de se balader dans les pièces d'un très grand château. C'est pour cette raison qu'elle décida d'attraper les mouches. Un petit coup de fil à l'INSEE, on avait recensé 75 mouches. Pour la suite de l'histoire... les règles sont incluses dans le jeu.

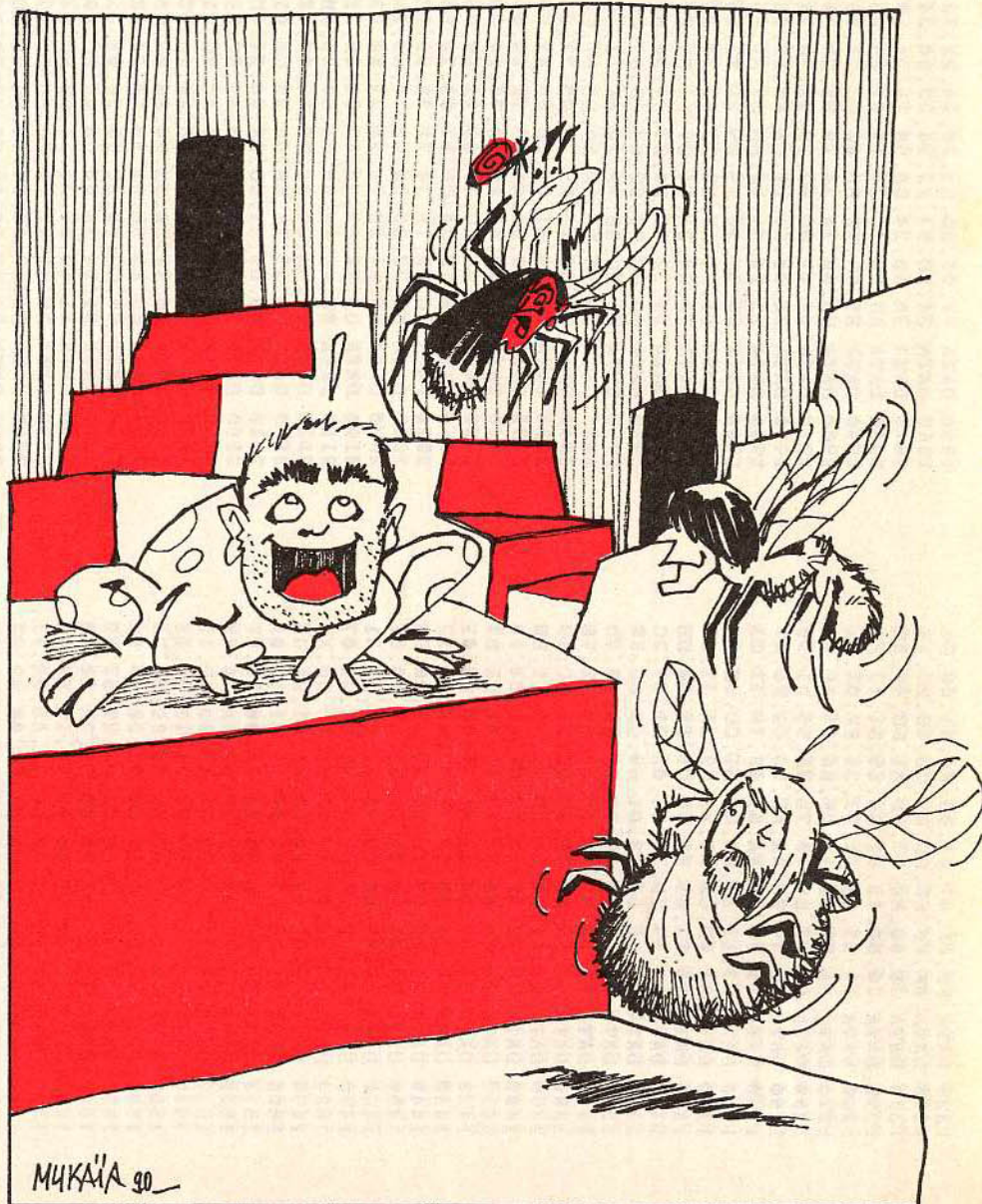
Quatre programmes vous seront proposés, dont deux tout de suite. Encodrez le premier et sauvez-le sous le nom de votre choix, c'est le lanceur et il aura sa place au début de votre cassette.

Sur une deuxième casquette, encodez le programme de DATA et nommez-le POPO1. Lancez-le histoire de véri-

fier vos erreurs, mais ne laissez pas ce dernier générer son programme binaire (cela n'est valable que pour les possesseurs de 464 sans lecteur disque). Pour le reste, attendez quelques jours

(30 exactement) pour voir à quoi ressemble un jeu écrit avec amour.

En attendant, j'attends tous vos jeux et n'oubliez pas qu'ils seront rémunérés. Que demande le peuple ?



```
10 ENV 1,5,1,5:ENT -1,1,-40,1:ENT -2,7,-
10,4,1,120,1:ENV 2,15,1,3:ENV 3,15,-1,20
:ENT -3,10,3,1,1,-30,1:ENT 4,1,0,31,1,12
7,31:ENV 4,15,-1,2,1,1,1
20 MODE 0:BORDER 13:FOR t=0 TO 15:READ a
:INK t,a:NEXT:DATA 13,0,6,2,1,24,20,26,9
,12,15,16,18,7,11,3
30 MEMORY &3FFF:LOAD "bam3.bin",&4000:LO
AD "bam1.bin":CALL &8003
40 POKE 9300,72:POKE 9302,73:POKE 9304,7
4:POKE 9306,75:POKE 9308,76:POKE 9301,55
50 REM ***** MENU *****
60 PEN 1:MODE 1:LOCATE 9,1:PRINT"Batraci
en Anti-Mouches"
70 LOCATE 14,4:PRINT CHR$(143);CHR$(143)
;" ";CHR$(143);" ";CHR$(143);CHR$(143)
;" ";CHR$(143);CHR$(143)
80 LOCATE 14,5:PRINT CHR$(143);" ";CHR$(
143);" ";CHR$(143);" ";CHR$(143);" ";CHR
$(143);" ";CHR$(143);" ";CHR$(143)
90 LOCATE 14,6:PRINT CHR$(143);CHR$(143)
;CHR$(143);" ";CHR$(143);CHR$(143);CHR$(
```

```
143);" ";CHR$(143);" ";CHR$(143)
100 LOCATE 14,7:PRINT CHR$(143);" ";CHR
(143);" ";CHR$(143);" ";CHR$(143);" "CHR
$(143);" ";CHR$(143)
110 LOCATE 14,8:PRINT CHR$(143);CHR$(143
);" ";CHR$(143);" ";CHR$(143);" "CHR$(1
43);" ";CHR$(143)
120 LOCATE 12,13:PRINT "1 / JOUER."
130 LOCATE 12,15:PRINT "2 / DIRECTIO
N."
140 LOCATE 12,17:PRINT "3 / REGLE."
150 LOCATE 4,24:PRINT "<<ROUX-SERRET Dom
inique (1989) >>"
160 a$=INKEYS
170 IF a$="1" THEN GOTO 210
180 IF a$="2" THEN GOTO 260
190 IF a$="3" THEN GOTO 420 ELSE GOTO 16
0
200 REM ***** JOUER *****
210 MODE 0:PEN 7:MEMORY 9999:LOAD "bam2.
bin":CALL &8000
220 p=PEEK (9318):IF p<>0 GOTO 230 ELSE
```

```
LOCATE 10,12:PRINT CHR$(22);CHR$(1);"GAG
NE":FOR T=1 TO 4000:NEXT:GOTO 60
230 LOCATE 8,12:PRINT CHR$(22);CHR$(1);"
GAME OVER":FOR T=1 TO 4000:NEXT
240 GOTO 60
250 REM ***** DIRECTION *****
260 CLS:LOCATE 9,4:PRINT "<< D I R E C T
I O N >>"
270 LOCATE 16,10:PRINT "HAUT":GOSUB 400
280 POKE 9300,A
290 LOCATE 16,13:PRINT "BAS":GOSUB 400
300 POKE 9302,A
310 LOCATE 16,16:PRINT "GAUCHE":GOSUB 40
0
320 POKE 9304,A
330 LOCATE 16,19:PRINT "DROITE":GOSUB 40
0
340 POKE 9306,A
350 LOCATE 16,22:PRINT "FIRE":GOSUB 400
360 POKE 9308,A
370 CLS:LOCATE 15,12:PRINT"CHANGER VUE":
```

```

GOSUB 400
380 POKE 9301,A
390 GOTO 50
400 FOR A=0 TO 79:IF INKEY(A)=0 THEN WHI
LE INKEY(A)<>-1:WEND:WHILE INKEYS<>"":WE
ND:RETURN ELSE NEXT:GOTO 400
410 REM ***** REGLE *****
420 CLS:LOCATE 13,2:PRINT "<< R E G L E
>>"
430 LOCATE 3,5:PRINT " Le but du jeu es
t d'aller gober 75
Le jeu est compo
se de 3 niveaux."
440 LOCATE 3,10:PRINT "<< PYRAMIDES >>"
Elles tuent si on y
saute dessus.
450 LOCATE 1,14:PRINT "<< TROUS >> Ils
tuent si on y saute.
460 LOCATE 3,16:PRINT "<< BLOCS POUSSABL
ES >> Ils vont dans la
direction ou on
les pousse.
(FIRE+Direction)
470 LOCATE 3,21:PRINT "<< TELEPORTEUR >>
Permettent de monter
ou descendre.
480 LOCATE 8,25:PRINT "<< APPUYEZ UNE TO
UCHE >>":CALL &BB18:GOTO 60

```

```

100 'COPYRIGHT AMSTRAD 100 %
110 MODE 1:ADR= 32768:FOR I%=0 TO 606
120 FOR J%=1 TO 8:READ A$
130 A%=VAL("&"+A$)
140 B%=(B%+I%+A%*J%) AND 255
150 POKE ADR+I%*8+J%-1,A%:NEXT J%
160 READ B$:IF B%=VAL("&"+B$) THEN 180
170 PRINT "ERREUR EN ";1000+I%*10:STOP
180 LOCATE 10,10:PRINT "LIGNE ";+1000
+I%*10" OK...
190 NEXT I%:SAVE"BAM1.BIN",B,ADR, 4848
200
1000 DATA C3,0F,80,21,00,40,11,70,5C
1010 DATA 0D,01,B8,16,ED,B0,C9,3E,23
1020 DATA 03,32,65,24,3E,4B,32,66,DF
1030 DATA 24,3E,07,32,74,24,3E,05,6A
1040 DATA 32,75,24,3E,02,32,5E,24,F2
1050 DATA 3E,01,32,81,24,3E,04,32,C8
1060 DATA 6F,24,3E,00,32,78,24,32,BF
1070 DATA 77,24,32,5F,24,32,60,24,68
1080 DATA 32,93,24,21,00,00,22,8D,46
1090 DATA 24,22,8F,24,3E,5A,32,67,1B
1100 DATA 24,21,3B,27,22,69,24,21,42
1110 DATA 10,27,22,6B,24,3E,09,32,01
1120 DATA 76,24,21,A2,1F,22,91,24,88
1130 DATA 11,06,00,21,F2,FF,ED,53,58
1140 DATA 8D,24,22,8F,24,11,01,00,60
1150 DATA 21,2A,00,ED,53,7A,24,22,88
1160 DATA 7C,24,C3,1E,81,82,01,01,2D
1170 DATA B8,0B,00,0A,FF,FF,84,00,3C
1180 DATA 02,C8,00,00,0F,D1,00,81,97
1190 DATA 02,00,00,00,1E,00,FF,FF,B8
1200 DATA 81,04,04,64,00,00,0F,FE,D6
1210 DATA FF,81,03,01,90,01,00,0F,DA

```

```

1220 DATA FF,FF,87,03,03,F4,01,00,F6
1230 DATA 0F,FF,FF,DD,E5,CD,1D,BC,1E
1240 DATA 3E,80,AC,67,DD,E1,DD,46,8E
1250 DATA 00,DD,4E,01,DD,E5,D1,13,FC
1260 DATA 13,E5,C5,3A,93,24,FE,01,91
1270 DATA CA,06,81,1A,4F,E6,55,FE,5C
1280 DATA 00,C2,E9,80,7E,E6,55,B1,30
1290 DATA 4F,79,E6,AA,FE,00,C2,F6,A7
1300 DATA 80,7E,E6,AA,B1,4F,79,77,C3
1310 DATA 23,13,10,D7,C1,E1,CD,0D,9E
1320 DATA 81,0D,C2,D1,80,C9,1A,77,67
1330 DATA 23,13,C3,FA,80,D5,11,00,DE
1340 DATA 08,19,CB,74,28,02,D1,C9,2C
1350 DATA 11,50,C0,19,D1,C9,CD,B2,8F
1360 DATA 83,11,04,00,DD,21,7A,10,4D
1370 DATA CD,7F,81,11,14,00,DD,21,7E
1380 DATA CE,10,CD,7F,81,DD,21,BC,79
1390 DATA 10,11,00,00,CD,7F,81,11,ED
1400 DATA 06,00,21,50,00,DD,21,C4,0B
1410 DATA 0E,CD,BB,80,11,08,00,21,B9
1420 DATA 80,00,DD,21,A8,1B,CD,BB,01
1430 DATA 80,11,00,00,21,C7,00,DD,32
1440 DATA 21,B6,0F,CD,BB,80,11,00,9E
1450 DATA 00,21,08,00,DD,21,18,10,9F
1460 DATA CD,BB,80,CD,9A,81,CD,B3,41
1470 DATA 81,CD,CC,81,C3,91,82,21,07
1480 DATA BF,00,06,17,C5,E5,D5,DD,A6
1490 DATA E5,CD,BB,80,DD,E1,D1,E1,34
1500 DATA C1,D5,11,F8,FF,19,D1,10,0A
1510 DATA EB,C9,3A,74,24,11,08,00,FA
1520 DATA 21,68,00,CD,1D,82,3A,75,8F
1530 DATA 24,11,0C,00,21,68,00,CD,1E
1540 DATA 1D,82,C9,3A,76,24,11,08,0F
1550 DATA 00,21,20,00,CD,1D,82,3A,76
1560 DATA 77,24,11,0C,00,21,20,00,FE
1570 DATA CD,1D,82,C9,06,06,21,B8,60
1580 DATA 00,11,04,00,DD,21,7A,10,4B
1590 DATA C5,E5,CD,BB,80,E1,11,F8,02
1600 DATA FF,19,C1,10,EC,3A,65,24,71
1610 DATA FE,00,C8,FE,01,CA,0F,82,E1
1620 DATA FE,02,CA,02,82,DD,21,A2,E8
1630 DATA 1F,11,06,00,21,98,00,CD,D0
1640 DATA BB,80,DD,21,A2,1F,11,06,31
1650 DATA 00,21,A8,00,CD,BB,80,11,DE
1660 DATA 06,00,21,B8,00,DD,21,A2,5C
1670 DATA 1F,CD,BB,80,C9,FE,00,CA,8F
1680 DATA 51,82,FE,01,CA,58,82,FE,82
1690 DATA 02,CA,5F,82,FE,03,CA,66,23
1700 DATA 82,FE,04,CA,6D,82,FE,05,4C
1710 DATA CA,74,82,FE,06,CA,7B,82,FB
1720 DATA FE,07,CA,82,82,FE,08,CA,B3
1730 DATA 89,82,DD,21,A2,0E,C3,8D,DE
1740 DATA 82,DD,21,70,0D,C3,8D,82,4B
1750 DATA DD,21,92,0D,C3,8D,82,DD,3F
1760 DATA 21,B4,0D,C3,8D,82,DD,21,3B
1770 DATA D6,0D,C3,8D,82,DD,21,F8,6F
1780 DATA 0D,C3,8D,82,DD,21,1A,0E,5E
1790 DATA C3,8D,82,DD,21,3C,0E,C3,34
1800 DATA 8D,82,DD,21,5E,0E,C3,8D,47
1810 DATA 82,DD,21,80,0E,CD,BB,80,9F
1820 DATA C9,CD,B2,83,21,00,C2,11,21
1830 DATA 00,40,01,FF,3F,ED,B0,3E,C1
1840 DATA 01,32,94,24,11,50,00,21,4F

```

```

1850 DATA 78,00,ED,53,70,24,22,72,08
1860 DATA 24,ED,53,82,24,22,84,24,F3
1870 DATA 2A,6B,24,ED,5B,7A,24,19,32
1880 DATA ED,5B,7C,24,19,01,05,05,67
1890 DATA E5,C5,7E,FE,00,CC,17,83,91
1900 DATA ED,5B,7A,24,19,E5,2A,70,83
1910 DATA 24,11,0C,00,19,22,70,24,3E
1920 DATA 2A,72,24,11,F8,FF,19,22,6D
1930 DATA 72,24,E1,10,DD,C1,E1,ED,58
1940 DATA 5B,7C,24,19,E5,2A,82,24,8E
1950 DATA 11,F4,FF,19,22,82,24,22,A2
1960 DATA 70,24,2A,84,24,11,F8,FF,C2
1970 DATA 19,22,72,24,22,84,24,E1,D3
1980 DATA 0D,C2,C8,82,C3,3D,83,C5,CE
1990 DATA E5,ED,5B,70,24,2A,72,24,64
2000 DATA CD,1D,BC,3E,80,AC,67,01,18
2010 DATA 18,0C,C5,E5,3E,00,77,23,E2
2020 DATA 10,FA,E1,C1,CD,0D,81,0D,FB
2030 DATA 20,F0,E1,C1,C9,11,88,00,E5
2040 DATA 21,78,00,ED,53,70,24,22,35
2050 DATA 72,24,CD,17,83,21,60,00,EF
2060 DATA 22,72,24,CD,17,83,21,58,11
2070 DATA 16,22,7E,24,21,9E,83,3E,AB
2080 DATA 0B,32,80,24,C3,73,83,21,A8
2090 DATA A6,14,22,7E,24,21,A8,83,66
2100 DATA C3,84,83,3A,80,24,3D,32,A5
2110 DATA 80,24,FE,05,CA,67,83,FE,D4
2120 DATA 00,CA,D0,83,7E,16,00,5F,56
2130 DATA D5,23,7E,5F,D5,23,C1,D1,B9
2140 DATA E5,C5,E1,DD,2A,7E,24,CD,F9
2150 DATA BB,80,E1,C3,73,83,5C,B8,90
2160 DATA 68,B0,74,A8,80,A0,8C,98,C8
2170 DATA 50,B8,44,B0,38,A8,2C,A0,F8
2180 DATA 20,98,3A,81,24,FE,01,CA,A9
2190 DATA C5,83,3E,01,32,81,24,3E,D6
2200 DATA C0,CD,08,BC,C9,3E,02,32,F7
2210 DATA 81,24,3E,40,CD,08,BC,C9,DF
2220 DATA 11,50,00,21,78,00,ED,53,4F
2230 DATA 70,24,22,72,24,ED,53,82,A4
2240 DATA 24,22,84,24,2A,6B,24,ED,C0
2250 DATA 5B,7A,24,19,ED,5B,7C,24,0E
2260 DATA 19,01,05,05,E5,C5,7E,FE,B5
2270 DATA 00,C4,4F,84,7E,FE,07,CC,2D
2280 DATA 62,84,7E,FE,06,CC,75,84,42
2290 DATA ED,5B,7A,24,19,E5,2A,70,6C
2300 DATA 24,11,0C,00,19,22,70,24,5F
2310 DATA 2A,72,24,11,F8,FF,19,22,C6
2320 DATA 72,24,E1,10,D1,C1,E1,ED,AD
2330 DATA 5B,7C,24,19,E5,2A,82,24,1B
2340 DATA 11,F4,FF,19,22,82,24,22,67
2350 DATA 70,24,2A,84,24,11,F8,FF,BF
2360 DATA 19,22,72,24,22,84,24,E1,08
2370 DATA 0D,C2,F4,83,C3,88,84,E5,8C
2380 DATA C5,ED,5B,70,24,2A,72,24,3A
2390 DATA DD,21,E0,10,CD,BB,80,C1,7C
2400 DATA E1,C9,E5,C5,ED,5B,70,24,05
2410 DATA 2A,72,24,DD,21,E0,1E,CD,7A
2420 DATA BB,80,C1,E1,C9,E5,C5,ED,82
2430 DATA 5B,70,24,2A,72,24,DD,21,6E
2440 DATA 1E,1E,CD,BB,80,C1,E1,C9,10
2450 DATA 21,04,1D,22,7E,24,2A,6B,6C
2460 DATA 24,22,82,24,2A,7A,24,22,34
2470 DATA 84,24,21,00,85,3E,0B,32,E5

```

```

2480 DATA 80,24,C3,BD,84,21,EA,1B,22
2490 DATA 22,7E,24,2A,6B,24,22,82,E9
2500 DATA 24,2A,7C,24,22,84,24,21,DB
2510 DATA 0A,85,C3,CE,84,3A,80,24,B8
2520 DATA 3D,32,80,24,FE,05,CA,A5,EB
2530 DATA 84,FE,00,CA,14,85,E5,2A,70
2540 DATA 82,24,ED,5B,84,24,19,22,68
2550 DATA 82,24,E1,7E,16,00,5F,D5,54
2560 DATA 23,7E,5F,D5,23,C1,D1,E5,D8
2570 DATA 2A,82,24,7E,E1,FE,0A,C2,01
2580 DATA BD,84,E5,C5,E1,DD,2A,7E,22
2590 DATA 24,CD,BB,80,E1,C3,BD,84,4B
2600 DATA 5A,96,66,8E,72,86,7E,7E,FB
2610 DATA 8A,76,50,96,44,8E,38,86,21
2620 DATA 2C,7E,20,76,3A,78,24,32,0F
2630 DATA 86,24,11,50,00,21,88,00,E6
2640 DATA ED,53,70,24,22,72,24,ED,33
2650 DATA 53,82,24,22,84,24,3E,00,C4
2660 DATA 32,86,24,32,8B,24,2A,6B,73
2670 DATA 24,ED,5B,7A,24,19,ED,5B,3F
2680 DATA 7C,24,19,01,06,06,E5,C5,3F
2690 DATA CD,A3,85,ED,5B,7A,24,19,44
2700 DATA E5,2A,70,24,11,0C,00,19,12
2710 DATA 22,70,24,2A,72,24,11,F8,C9
2720 DATA FF,19,22,72,24,E1,10,E0,F2
2730 DATA C1,E1,ED,5B,7C,24,19,E5,2B
2740 DATA 2A,82,24,11,F4,FF,19,22,F6
2750 DATA 82,24,22,70,24,2A,84,24,CA
2760 DATA 11,F8,FF,19,22,72,24,22,0E
2770 DATA 84,24,E1,0D,3E,01,B9,CA,D4
2780 DATA 9B,85,3E,00,B9,C2,46,85,FE
2790 DATA C3,06,89,3E,01,32,8B,24,16
2800 DATA C3,46,85,E5,ED,5B,70,24,1B
2810 DATA 2A,72,24,ED,53,87,24,22,C6
2820 DATA 89,24,E1,7E,FE,02,CC,82,88
2830 DATA 86,7E,FE,03,CC,9E,86,7E,12
2840 DATA FE,04,CC,A2,86,7E,FE,05,70
2850 DATA CC,A6,86,7E,FE,08,CC,B0,14
2860 DATA 86,7E,FE,09,CC,C3,86,FE,AC
2870 DATA 0C,CC,CD,86,7E,FE,0D,CC,CC
2880 DATA EB,86,7E,FE,10,CC,40,87,25
2890 DATA 7E,FE,12,CC,72,87,7E,FE,B3
2900 DATA 13,CC,8F,87,7E,FE,16,CC,7B
2910 DATA D8,87,FE,0E,CC,00,87,7E,28
2920 DATA FE,0F,CC,2B,87,7E,FE,11,65
2930 DATA CC,56,87,7E,FE,14,CC,A4,94
2940 DATA 87,7E,FE,15,CC,C8,87,7E,C2
2950 DATA FE,17,CC,EA,87,7E,FE,18,5B
2960 DATA CC,F4,87,7E,FE,19,CC,FE,CC
2970 DATA 87,7E,FE,1A,CC,08,88,7E,AD
2980 DATA FE,1B,CC,0F,88,7E,FE,0A,8F
2990 DATA CC,16,88,ED,5B,69,24,7D,C2
3000 DATA BB,CA,45,86,C9,7C,BA,CC,ED
3010 DATA 7D,88,C9,E5,2A,89,24,11,3D
3020 DATA 10,00,19,22,89,24,E1,C9,64
3030 DATA E5,C5,2A,89,24,11,F8,FF,A7
3040 DATA 19,ED,5B,87,24,DD,21,78,B0
3050 DATA 13,CD,BB,80,C1,E1,C9,E5,A8
3060 DATA C5,2A,89,24,ED,5B,87,24,F0
3070 DATA DD,21,F6,11,CD,BB,80,C1,98
3080 DATA E1,C9,E5,C5,2A,87,24,11,CE
3090 DATA 08,00,19,E5,2A,89,24,11,C9
3100 DATA F1,FF,19,D1,DD,21,A8,1B,5E

```

```

3110 DATA CD,BB,80,C1,E1,C9,CD,58,33
3120 DATA 86,C9,CD,6F,86,C9,CD,6F,75
3130 DATA 86,CD,4B,86,CD,82,86,C9,35
3140 DATA E5,C5,ED,5B,87,24,2A,89,70
3150 DATA 24,DD,21,0A,18,CD,BB,80,F4
3160 DATA C1,E1,C9,CD,B0,86,CD,4B,4D
3170 DATA 86,CD,82,86,C9,3A,86,24,E6
3180 DATA FE,00,C2,DA,86,CD,6F,86,07
3190 DATA 18,04,FE,01,18,07,CD,4B,92
3200 DATA 86,CD,6F,86,C9,3E,01,32,EF
3210 DATA 80,24,C9,3E,00,32,80,24,BE
3220 DATA CD,CD,86,3A,80,24,FE,01,E1
3230 DATA C8,CD,4B,86,CD,82,86,C9,33
3240 DATA 3A,86,24,FE,00,C2,0D,87,FC
3250 DATA CD,6F,86,18,05,FE,01,C2,C5
3260 DATA 1A,87,CD,4B,86,CD,6F,86,35
3270 DATA 18,04,FE,02,28,07,CD,4B,54
3280 DATA 86,CD,6F,86,C9,3E,01,32,F1
3290 DATA 80,24,C9,3E,00,32,80,24,00
3300 DATA CD,00,87,3A,80,24,FE,01,CC
3310 DATA C8,CD,4B,86,CD,82,86,C9,5E
3320 DATA 3A,86,24,FE,00,20,05,CD,93
3330 DATA 6F,86,18,03,FE,01,C0,CD,4E
3340 DATA 4B,86,CD,58,86,C9,3E,00,C2
3350 DATA 32,80,24,CD,CD,86,3A,80,A7
3360 DATA 24,FE,00,28,06,3A,86,24,0B
3370 DATA FE,02,C0,CD,4B,86,CD,58,DF
3380 DATA 86,C9,3A,86,24,FE,00,20,95
3390 DATA 05,CD,B0,86,18,04,FE,01,9E
3400 DATA 20,07,CD,4B,86,CD,6F,86,84
3410 DATA C9,3E,01,32,80,24,C9,3E,E3
3420 DATA 00,32,80,24,CD,72,87,3A,15
3430 DATA 80,24,FE,01,C8,CD,4B,86,66
3440 DATA CD,82,86,C9,3E,00,32,80,21
3450 DATA 24,CD,72,87,3A,80,24,FE,07
3460 DATA 00,CA,BB,87,3A,86,24,FE,CA
3470 DATA 02,18,07,CD,4B,86,CD,6F,AB
3480 DATA 86,C9,3E,02,32,80,24,C9,83
3490 DATA CD,A4,87,3A,80,24,FE,02,37
3500 DATA C8,CD,4B,86,CD,82,86,C9,61
3510 DATA 3A,86,24,FE,00,C2,E3,87,DC
3520 DATA CD,B0,86,CD,4B,86,CD,58,A5
3530 DATA 86,C9,CD,72,87,CD,4B,86,82
3540 DATA CD,58,86,C9,CD,4B,86,CD,7A
3550 DATA 4B,86,CD,6F,86,C9,CD,F4,7B
3560 DATA 87,CD,4B,86,CD,82,86,C9,94
3570 DATA CD,82,86,CD,F4,87,C9,CD,08
3580 DATA 82,86,CD,FE,07,C9,E5,C5,C9
3590 DATA 3A,8B,24,FE,00,CA,3A,88,27
3600 DATA 2A,70,24,11,0C,00,19,E5,14
3610 DATA 2A,72,24,11,0E,00,19,D1,77
3620 DATA DD,21,8E,1A,CD,BB,80,C1,C3
3630 DATA E1,C9,2A,72,24,11,0E,00,30
3640 DATA 19,ED,5B,70,24,DD,21,74,9D
3650 DATA 19,CD,BB,80,C1,E1,C9,ED,BB
3660 DATA 53,93,24,22,69,23,CD,1D,DA
3670 DATA BC,3E,80,AC,67,11,00,A0,03
3680 DATA 3E,06,12,13,3E,10,12,13,DB
3690 DATA 01,10,06,C5,E5,7E,12,23,8D
3700 DATA 13,10,FA,E1,C1,CD,0D,81,98
3710 DATA 0D,C2,6B,88,C9,E5,C5,2A,00
3720 DATA 69,24,7E,C3,D2,88,2A,87,5F
3730 DATA 24,ED,5B,8D,24,19,E5,2A,07

```

```

3740 DATA 89,24,ED,5B,8F,24,19,D1,75
3750 DATA 3A,94,24,FE,01,CA,C1,88,1B
3760 DATA 3E,00,32,94,24,DD,21,00,A8
3770 DATA A0,E5,D5,ED,5B,93,24,2A,72
3780 DATA 69,23,3E,01,32,93,24,CD,5F
3790 DATA BB,80,3E,00,32,93,24,D1,7C
3800 DATA E1,E5,D5,CD,4F,88,D1,E1,14
3810 DATA DD,2A,91,24,CD,BB,80,C1,3B
3820 DATA E1,C9,2A,72,24,ED,5B,70,03
3830 DATA 24,ED,53,87,24,22,89,24,4D
3840 DATA 3A,78,24,FE,00,CA,86,88,61
3850 DATA CD,4B,86,FE,01,CA,86,88,E1
3860 DATA CD,4B,86,FE,02,CA,86,88,6E
3870 DATA CD,4B,86,FE,03,CA,86,88,08
3880 DATA CD,4B,86,C3,86,88,CD,B2,02
3890 DATA 83,21,00,C0,11,00,40,01,EC
3900 DATA FF,3F,3A,81,24,FE,01,CA,2A
3910 DATA 1B,89,EB,ED,B0,3A,5F,24,69
3920 DATA FE,00,CA,0D,8C,3A,5E,24,E3
3930 DATA FE,01,CA,DC,89,FE,02,CA,D8
3940 DATA 81,8A,FE,03,CA,23,8B,3A,04
3950 DATA 5F,24,FE,01,CA,47,89,FE,2C
3960 DATA 02,CA,6C,89,C3,B5,89,21,3E
3970 DATA 85,80,CD,AA,BC,11,0A,00,72
3980 DATA 21,08,00,ED,53,8D,24,22,A0
3990 DATA 8F,24,11,24,21,ED,53,91,92
4000 DATA 24,3A,5F,24,3E,02,32,5F,CF
4010 DATA 24,C3,14,85,11,06,00,21,B2
4020 DATA F2,FF,ED,53,8D,24,22,8F,24
4030 DATA 24,3A,78,24,3C,32,78,24,EC
4040 DATA 3E,03,32,5F,24,2A,6D,24,8D
4050 DATA 22,69,24,3A,79,24,47,3A,53
4060 DATA 78,24,B8,28,09,21,86,21,10
4070 DATA 22,91,24,C3,14,85,21,C2,DD
4080 DATA 20,22,91,24,3E,00,32,5F,B0
4090 DATA 24,CD,85,8B,3A,80,24,FE,9F
4100 DATA 01,C8,C3,14,85,3A,78,24,D6
4110 DATA 3D,32,78,24,11,06,00,21,A8
4120 DATA F2,FF,ED,53,8D,24,22,8F,6A
4130 DATA 24,3A,78,24,47,3A,79,24,F0
4140 DATA B8,28,CB,21,86,21,22,91,87
4150 DATA 24,C3,14,85,3A,5F,24,FE,A1
4160 DATA 01,CA,EC,89,FE,02,CA,11,0E
4170 DATA 8A,C3,5A,8A,21,85,80,CD,E7
4180 DATA AA,BB,11,02,00,21,08,00,32
4190 DATA ED,53,8D,24,22,8F,24,11,7C
4200 DATA 3E,22,ED,53,91,24,3A,5F,4C
4210 DATA 24,3E,02,32,5F,24,C3,14,6A
4220 DATA 85,11,06,00,21,F2,FF,ED,E5
4230 DATA 53,8D,24,22,8F,24,3A,78,57
4240 DATA 24,3C,32,78,24,3E,03,32,56
4250 DATA 5F,24,2A,6D,24,32,69,24,D6
4260 DATA 3A,79,24,47,3A,78,24,B8,68
4270 DATA 28,09,21,A0,22,22,91,24,4A
4280 DATA C3,14,85,21,E8,21,22,91,4C
4290 DATA 24,3E,00,32,5F,24,CD,C5,72
4300 DATA 8B,3A,80,24,FE,01,C8,C3,5D
4310 DATA 14,85,3A,78,24,3D,32,78,A1
4320 DATA 24,11,06,00,21,F2,FF,ED,0B
4330 DATA 53,8D,24,22,8F,24,3A,78,CD
4340 DATA 24,47,3A,79,24,B8,28,CB,F5
4350 DATA 21,A0,22,22,91,24,C3,14,5E
4360 DATA 85,3A,5F,24,FE,01,CA,91,8E

```

4370 DATA 8A, FE, 02, CA, B3, 8A, C3, FC, BA
 4380 DATA 8A, 21, 85, 80, CD, AA, BC, 11, 4E
 4390 DATA 0E, 00, 21, 00, 00, ED, 53, 8D, 92
 4400 DATA 24, 22, 8F, 24, 11, 04, 20, ED, 8C
 4410 DATA 53, 91, 24, 3E, 02, 32, 5F, 24, FC
 4420 DATA C3, 14, 85, 11, 06, 00, 21, F2, FF
 4430 DATA FF, ED, 53, 8D, 24, 22, 8F, 24, 46
 4440 DATA 3A, 78, 24, 3C, 32, 78, 24, 3E, 42
 4450 DATA 03, 32, 5F, 24, 2A, 6D, 24, 22, 8A
 4460 DATA 69, 24, 3A, 79, 24, 47, 3A, 78, 51
 4470 DATA 24, B8, 28, 09, 21, 60, 20, 22, 2E
 4480 DATA 91, 24, C3, 14, 85, 21, A2, 1F, 45
 4490 DATA 22, 91, 24, 3E, 00, 32, 5F, 24, BA
 4500 DATA CD, C5, 8B, 3A, 80, 24, FE, 01, DC
 4510 DATA C8, C3, 14, 85, 3A, 78, 24, 3D, 48
 4520 DATA 32, 78, 24, 11, 06, 00, 21, F2, AF
 4530 DATA FF, ED, 53, 8D, 24, 22, 8F, 24, 46
 4540 DATA 3A, 78, 24, 47, 3A, 79, 24, B8, BC
 4550 DATA 28, CB, 21, 60, 20, 22, 91, 24, F8
 4560 DATA C3, 14, 85, 3A, 5F, 24, FE, 01, 27
 4570 DATA CA, 33, 8B, FE, 02, CA, 55, 8B, 89
 4580 DATA C3, 9E, 8B, 21, 85, 80, CD, AA, 61
 4590 DATA BC, 11, 00, 00, 21, 00, 00, ED, 84
 4600 DATA 53, 8D, 24, 22, 8F, 24, 11, 64, 5F
 4610 DATA 23, ED, 53, 91, 24, 3E, 02, 32, A7
 4620 DATA 5F, 24, C3, 14, 85, 11, 06, 00, 60
 4630 DATA 21, F2, FF, ED, 53, 8D, 24, 22, 67
 4640 DATA 8F, 24, 3A, 78, 24, 3C, 32, 78, 66
 4650 DATA 24, 3E, 03, 32, 5F, 24, 2A, 6D, 80
 4660 DATA 24, 22, 69, 24, 3A, 79, 24, 47, 4F
 4670 DATA 3A, 78, 24, B8, 28, 09, 21, C6, 52
 4680 DATA 23, 22, 91, 24, C3, 14, 85, 21, 6E
 4690 DATA 02, 23, 22, 91, 24, 3E, 00, 32, A0
 4700 DATA 5F, 24, CD, C5, 8B, 3A, 80, 24, 05
 4710 DATA FE, 01, C8, C3, 14, 85, 3A, 78, D9
 4720 DATA 24, 3D, 32, 78, 24, 11, 06, 00, D1
 4730 DATA 21, F2, FF, ED, 53, 8D, 24, 22, 28
 4740 DATA 8F, 24, 3A, 78, 24, 47, 3A, 79, F9
 4750 DATA 24, B8, 28, CB, 21, C6, 23, 22, 37
 4760 DATA 91, 24, C3, 14, 85, 3E, 00, 32, 06
 4770 DATA 80, 24, 3A, 67, 24, 3D, 32, 67, 98
 4780 DATA 24, 3A, 77, 24, 3D, 32, 77, 24, B3
 4790 DATA FE, FF, C2, E9, 8B, 3E, 09, 32, 6B
 4800 DATA 77, 24, 3A, 76, 24, 3D, 32, 76, C0
 4810 DATA 24, 11, 08, 00, 21, 20, 00, 3A, 3B
 4820 DATA 76, 24, CD, 1D, 82, 11, 0C, 00, 08
 4830 DATA 21, 20, 00, 3A, 77, 24, CD, 1D, F7
 4840 DATA 82, 3A, 67, 24, FE, 00, C0, 3E, D8
 4850 DATA 01, 32, 80, 24, C9, 3E, 00, 32, 46
 4860 DATA 80, 24, 2A, 69, 24, 7E, FE, 03, F2
 4870 DATA CA, D2, 8D, FE, 00, CA, D2, 8D, F9
 4880 DATA FE, 10, CA, D2, 8D, FE, 11, CA, 59
 4890 DATA D2, 8D, FE, 17, CA, D2, 8D, FE, 6C
 4900 DATA 07, CA, 6E, 8C, FE, 06, CA, 88, 91
 4910 DATA 8C, FE, 02, CA, A2, 8C, FE, 05, 0B
 4920 DATA CA, AE, 8C, FE, 09, CA, BA, 8C, 6C
 4930 DATA FE, 0D, CA, C6, 8C, FE, 0F, CA, AB
 4940 DATA D2, 8C, FE, 13, CA, DE, 8C, FE, 15
 4950 DATA 15, CA, EA, 8C, FE, 19, CA, FD, FE
 4960 DATA 8C, FE, 1A, CA, F6, 8C, FE, 1B, 3C
 4970 DATA CA, 02, 8D, C3, EE, 8D, 21, B2, 90

4980 DATA 80, CD, AA, BC, 2A, 6B, 24, 11, E0
 4990 DATA F8, 01, 19, 22, 6B, 24, 2A, 69, 82
 5000 DATA 24, 19, 22, 69, 24, C3, 9F, 82, 11
 5010 DATA 21, B2, 80, CD, AA, BC, 2A, 6B, 0A
 5020 DATA 24, 11, 08, FE, 19, 22, 6B, 24, 46
 5030 DATA 2A, 69, 24, 19, 22, 69, 24, C3, DE
 5040 DATA 9F, 82, CD, 57, 8D, 3E, 01, 2A, 70
 5050 DATA 69, 24, 77, C3, 3E, 8D, CD, 57, 11
 5060 DATA 8D, 3E, 04, 2A, 69, 24, 77, C3, BC
 5070 DATA 3E, 8D, CD, 57, 8D, 3E, 08, 2A, 4C
 5080 DATA 69, 24, 77, C3, 3E, 8D, CD, 57, 05
 5090 DATA 8D, 3E, 0C, 2A, 69, 24, 77, C3, E0
 5100 DATA 3E, 8D, CD, 57, 8D, 3E, 0E, 2A, B2
 5110 DATA 69, 24, 77, C3, 3E, 8D, CD, 57, 83
 5120 DATA 8D, 3E, 12, 2A, 69, 24, 77, C3, 88
 5130 DATA 3E, 8D, CD, 57, 8D, 3E, 14, 2A, 9C
 5140 DATA 69, 24, 77, C3, 3E, 8D, 3E, 02, F4
 5150 DATA 32, 80, 24, 18, 05, 3E, 01, 32, 0E
 5160 DATA 80, 24, 3A, 78, 24, FE, 00, CA, 5C
 5170 DATA 23, 8D, 3A, 80, 24, FE, 02, CA, 55
 5180 DATA EE, 8D, FE, 01, CA, 47, 8D, CD, 4A
 5190 DATA 57, 8D, 3E, 1A, 2A, 69, 24, 77, F1
 5200 DATA C3, 3E, 8D, 3A, 80, 24, FE, 01, 31
 5210 DATA CA, EE, 8D, FE, 02, CA, 47, 8D, BD
 5220 DATA CD, 57, 8D, 3E, 19, 2A, 69, 24, 7F
 5230 DATA 77, 3E, 00, 32, 80, 24, 3A, 57, 18
 5240 DATA 24, FE, 01, C8, C3, 9F, 82, CD, 1A
 5250 DATA 57, 8D, 3E, 18, 2A, 69, 24, 77, E9
 5260 DATA 3E, 00, 32, 80, 24, 18, E7, 21, AA
 5270 DATA 8E, 80, CD, AA, BC, 3E, 00, 32, 4F
 5280 DATA 57, 24, 3A, 66, 24, 3D, 32, 66, 44
 5290 DATA 24, 3A, 75, 24, 3D, 32, 75, 24, E3
 5300 DATA FE, FF, C2, 81, 8D, 3E, 09, 32, 9D
 5310 DATA 75, 24, 3A, 74, 24, 3D, 32, 74, 70
 5320 DATA 24, 11, 08, 00, 21, 68, 00, 3A, 33
 5330 DATA 74, 24, CD, 1D, 82, 11, 0C, 00, 96
 5340 DATA 21, 68, 00, 3A, 75, 24, CD, 1D, A3
 5350 DATA 82, 3A, 67, 24, 06, 0A, 80, 32, 60
 5360 DATA 67, 24, FE, 63, DA, B9, 8D, 3E, 98
 5370 DATA 64, 32, 67, 24, 3E, 09, 32, 76, 47
 5380 DATA 24, 3E, 0A, 32, 77, 24, C3, C0, FD
 5390 DATA 8D, 3A, 76, 24, 3C, 32, 76, 24, 5A
 5400 DATA CD, C5, 8B, 3A, 66, 24, FE, 00, C2
 5410 DATA C0, 3E, 01, 32, 57, 24, CD, B2, 47
 5420 DATA 83, C9, 21, A9, 80, CD, AA, BC, 07
 5430 DATA 3A, 65, 24, 3D, 32, 65, 24, CD, FF
 5440 DATA CC, 81, CD, B2, 83, 3A, 65, 24, AA
 5450 DATA FE, 00, C8, C3, 23, 80, 3A, 55, E1
 5460 DATA 24, CD, 1E, BB, C2, 26, 8E, 3A, 35
 5470 DATA 54, 24, CD, 1E, BB, C2, A9, 8E, EA
 5480 DATA 3A, 56, 24, CD, 1E, BB, C2, EA, 06
 5490 DATA 8E, 3A, 58, 24, CD, 1E, BB, C2, 8A
 5500 DATA 67, 8F, 3A, 5A, 24, CD, 1E, BB, 61
 5510 DATA C2, 24, 8F, 3E, 45, CD, 1E, BB, F9
 5520 DATA C2, D2, 8D, C3, 0D, 8C, 3A, 6F, C9
 5530 DATA 24, 3C, 32, 6F, 24, FE, 02, CA, E5
 5540 DATA 5B, 8E, FE, 03, CA, 75, 8E, FE, 14
 5550 DATA 04, CA, 8F, 8E, 3E, 01, 32, 6F, DB
 5560 DATA 24, 11, D6, FF, 21, 01, 00, ED, F2
 5570 DATA 53, 7A, 24, 22, 7C, 24, 2A, 6B, 37
 5580 DATA 24, 11, FC, 00, 19, 22, 6B, 24, 17

5590 DATA C3, 9F, 82, 11, FF, FF, 21, D6, C6
 5600 DATA FF, ED, 53, 7A, 24, 22, 7C, 24, E4
 5610 DATA 2A, 6B, 24, 11, 06, 00, 19, 22, D9
 5620 DATA 6B, 24, C3, 9F, 82, 11, 2A, 00, D7
 5630 DATA 21, FF, FF, ED, 53, 7A, 24, 22, A6
 5640 DATA 7C, 24, 2A, 6B, 24, 11, 04, FF, 42
 5650 DATA 19, 22, 6B, 24, C3, 9F, 82, 11, 97
 5660 DATA 01, 00, 21, 2A, 00, ED, 53, 7A, D6
 5670 DATA 24, 22, 7C, 24, 2A, 6B, 24, 11, B2
 5680 DATA FA, FF, 19, 22, 6B, 24, C3, 9F, 59
 5690 DATA 82, 2A, 7A, 24, 7D, ED, 44, 6F, 28
 5700 DATA 7C, 2F, 67, 22, 87, 24, 2A, 69, 58
 5710 DATA 24, ED, 5B, 87, 24, 19, 22, 6D, DB
 5720 DATA 24, 3E, 00, 32, 80, 24, 3A, 5C, D1
 5730 DATA 24, CD, 1E, BB, C2, A1, 8F, CD, 7E
 5740 DATA BB, 91, 3A, 80, 24, FE, 01, CA, D8
 5750 DATA EE, 8D, FE, 02, CA, 9F, 82, 3E, E4
 5760 DATA 01, 32, 5F, 24, 32, 5E, 24, C3, 18
 5770 DATA 1D, 89, 2A, 69, 24, ED, 5B, 7A, E0
 5780 DATA 24, ED, 53, 87, 24, 19, 22, 6D, 83
 5790 DATA 24, 3E, 00, 32, 80, 24, 3A, 5C, B1
 5800 DATA 24, CD, 1E, BB, C2, A1, 8F, CD, 96
 5810 DATA BB, 91, 3A, 80, 24, FE, 01, CA, 28
 5820 DATA EE, 8D, FE, 02, CA, 9F, 82, 3E, 6C
 5830 DATA 01, 32, 5F, 24, 3E, 02, 32, 5E, 26
 5840 DATA 24, C3, 1D, 89, 2A, 7C, 24, 7D, 09
 5850 DATA ED, 44, 6F, 7C, 2F, 67, 22, 87, 5E
 5860 DATA 24, 2A, 69, 24, ED, 5B, 87, 24, 65
 5870 DATA 19, 22, 6D, 24, 3E, 00, 32, 80, 65
 5880 DATA 24, 3A, 5C, 24, CD, 1E, BB, C2, C3
 5890 DATA A1, 8F, CD, BB, 91, 3A, 80, 24, EE
 5900 DATA FE, 01, CA, EE, 8D, FE, 02, CA, 67
 5910 DATA 9F, 82, 3E, 01, 32, 5F, 24, 3E, 40
 5920 DATA 04, 32, 5E, 24, C3, 1D, 89, 2A, 3E
 5930 DATA 69, 24, ED, 5B, 7C, 24, ED, 53, E1
 5940 DATA 87, 24, 19, 22, 6D, 24, 3E, 00, 9E
 5950 DATA 32, 80, 24, 3A, 5C, 24, CD, 1E, CB
 5960 DATA BB, C2, A1, 8F, CD, BB, 91, 3A, D3
 5970 DATA 80, 24, FE, 01, CA, EE, 8D, FE, 72
 5980 DATA 02, CA, 9F, 82, 3E, 01, 32, 5F, 0F
 5990 DATA 24, 3E, 03, 32, 5E, 24, C3, 1D, 03
 6000 DATA 89, 3A, 78, 24, FE, 00, C2, EE, 4C
 6010 DATA 8D, 2A, 6D, 24, 7E, FE, 08, CA, 9E
 6020 DATA D8, 8F, FE, 09, CA, D8, 8F, FE, 3D
 6030 DATA 12, CA, D8, 8F, FE, 13, CA, D8, 0D
 6040 DATA 8F, FE, 14, CA, D8, 8F, FE, 15, E8
 6050 DATA CA, D8, 8F, FE, 16, CA, D8, 8F, 59
 6060 DATA FE, 17, CA, D8, 8F, C3, EE, 8D, 5A
 6070 DATA 3E, 00, 32, 80, 24, ED, 5B, 87, FD
 6080 DATA 24, 2A, 6D, 24, 19, 22, 87, 24, 46
 6090 DATA 7E, FE, 18, CA, F8, 8F, FE, 19, 04
 6100 DATA CA, F8, 8F, FE, 02, D2, EE, 8D, 33
 6110 DATA 21, 97, 80, CD, AA, BC, 2A, 6D, 76
 6120 DATA 24, 7E, FE, 08, CA, 28, 90, FE, 72
 6130 DATA 09, CA, 6A, 90, FE, 12, CA, 72, 0D
 6140 DATA 90, FE, 13, CA, D6, 90, FE, 14, 2A
 6150 DATA CA, EC, 90, FE, 15, CA, 5F, 91, D2
 6160 DATA FE, 16, CA, 67, 91, C3, 91, 91, FC
 6170 DATA 2A, 87, 24, 7E, FE, 18, CA, EE, 3C
 6180 DATA 8D, FE, 19, CA, EE, 8D, 2A, 6D, EA
 6190 DATA 24, 3E, 01, 77, 2A, 87, 24, 7E, 89

6200 DATA FE, 00, CA, 53, 90, 3A, 80, 24, 3D
 6210 DATA FE, 01, CA, 60, 90, 3E, 08, 77, 97
 6220 DATA C3, 9F, 82, 3A, 80, 24, FE, 01, A8
 6230 DATA CA, 65, 90, 3E, 01, C3, 4F, 90, 7C
 6240 DATA 3E, 09, C3, 4F, 90, 3E, 02, C3, 1B
 6250 DATA 4F, 90, 3E, 01, 32, 80, 24, C3, BE
 6260 DATA 28, 90, 2A, 87, 24, 7E, FE, 18, 6A
 6270 DATA C2, 87, 90, 3E, 14, 77, 2A, 6D, 16
 6280 DATA 24, 3E, 01, 77, C3, 9F, 82, FE, 1C
 6290 DATA 19, C2, 98, 90, 3E, 15, 77, 2A, 8E
 6300 DATA 6D, 24, 3E, 01, 77, C3, 9F, 82, DF
 6310 DATA FE, 00, C2, B7, 90, 2A, 6D, 24, 7E
 6320 DATA 3E, 01, 77, 2A, 87, 24, 3A, 80, 7C
 6330 DATA 24, FE, 01, 28, 05, 3E, 04, C3, A8
 6340 DATA 4F, 90, 3E, 05, C3, 4F, 90, FE, 1E
 6350 DATA 01, C2, EE, 8D, 2A, 6D, 24, 3E, A5
 6360 DATA 01, 77, 2A, 87, 24, 3A, 80, 24, 9E
 6370 DATA FE, 01, 28, 05, 3E, 12, C3, 4F, 61
 6380 DATA 90, 3E, 13, C3, 4F, 90, 2A, 87, CB
 6390 DATA 24, 7E, FE, 18, CA, EE, 8D, FE, 6E
 6400 DATA 19, CA, EE, 8D, 3E, 01, 32, 80, 93
 6410 DATA 24, C3, 98, 90, 2A, 87, 24, 7E, 15
 6420 DATA FE, 00, CA, 3E, 91, FE, 01, C2, 39
 6430 DATA 15, 91, 2A, 6D, 24, 3E, 01, 77, 81
 6440 DATA 2A, 87, 24, 3A, 80, 24, FE, 01, 5F
 6450 DATA CA, 10, 91, 3E, 14, C3, 4F, 90, 9B
 6460 DATA 3E, 15, C3, 4F, 90, FE, 18, C2, 14
 6470 DATA EE, 8D, 3A, 80, 24, FE, 01, CA, E1
 6480 DATA 30, 91, 2A, 6D, 24, 3E, 18, 77, 0D

6490 DATA 2A, 87, 24, 3E, 14, C3, 4F, 90, 70
 6500 DATA 2A, 6D, 24, 3E, 19, 77, 2A, 87, AD
 6510 DATA 24, 3E, 14, C3, 4F, 90, 2A, 87, 16
 6520 DATA 24, 3A, 80, 24, FE, 01, CA, 54, 20
 6530 DATA 91, 3E, 0C, 77, 2A, 6D, 24, 3E, C1
 6540 DATA 01, C3, 4F, 90, 3E, 0D, 77, 2A, DA
 6550 DATA 6D, 24, 3E, 01, C3, 4F, 90, 3E, 2E
 6560 DATA 01, 32, 80, 24, C3, EC, 90, 2A, 9A
 6570 DATA 87, 24, 7E, FE, 00, C2, 7E, 91, C9
 6580 DATA 2A, 6D, 24, 3E, 01, 77, 2A, 87, CE
 6590 DATA 24, 3E, 03, C3, 4F, 90, FE, 01, E0
 6600 DATA C2, EE, 8D, 2A, 6D, 24, 3E, 01, 00
 6610 DATA 77, 2A, 87, 24, 3E, 16, C3, 4F, FF
 6620 DATA 90, 2A, 87, 24, 7E, FE, 00, C2, 12
 6630 DATA A8, 91, 2A, 6D, 24, 3E, 01, 77, 8D
 6640 DATA 2A, 87, 24, 3E, 10, C3, 4F, 90, 54
 6650 DATA FE, 01, C2, EE, 8D, 2A, 6D, 24, D2
 6660 DATA 3E, 01, 77, 2A, 87, 24, 3E, 17, B4
 6670 DATA C3, 4F, 90, 2A, 6D, 24, 3A, 78, 74
 6680 DATA 24, FE, 00, CA, 31, 92, FE, 01, D7
 6690 DATA CA, FE, 91, 7E, FE, 0E, CA, C2, F0
 6700 DATA 92, FE, 0F, CA, C2, 92, FE, 11, 53
 6710 DATA CA, C2, 92, FE, 14, CA, C2, 92, 25
 6720 DATA FE, 15, CA, C2, 92, FE, 17, CA, 52
 6730 DATA C2, 92, FE, 18, CA, C2, 92, FE, E9
 6740 DATA 19, CA, C2, 92, FE, 1A, CA, C2, 39
 6750 DATA 92, FE, 1B, CA, C2, 92, 7E, FE, D0
 6760 DATA 0C, CA, C8, 92, FE, 0D, CA, C8, 1A
 6770 DATA 92, FE, 10, CA, C8, 92, FE, 12, DE

6780 DATA CA, C8, 92, FE, 13, CA, C8, 92, 19
 6790 DATA FE, 16, CA, C8, 92, FE, 18, CA, 9F
 6800 DATA DA, 92, FE, 19, CA, DA, 92, FE, 17
 6810 DATA 1A, CA, DA, 92, FE, 1B, CA, DA, B1
 6820 DATA 92, 7E, FE, 03, CA, CE, 92, FE, 29
 6830 DATA 04, CA, CE, 92, FE, 05, CA, CE, B5
 6840 DATA 92, FE, 08, CA, CE, 92, FE, 09, 6F
 6850 DATA CA, CE, 92, FE, 01, CA, D4, 92, E8
 6860 DATA FE, 06, CA, D4, 92, FE, 07, CA, 3F
 6870 DATA D4, 92, FE, 00, CA, D4, 92, FE, 61
 6880 DATA 02, CA, D4, 92, FE, 18, CA, D4, C7
 6890 DATA 92, FE, 19, CA, D4, 92, FE, 1A, 82
 6900 DATA CA, D4, 92, FE, 1B, CA, D4, 92, B1
 6910 DATA FE, 0A, C2, DA, 92, 3A, 78, 24, 87
 6920 DATA FE, 00, C2, DA, 92, 2A, 69, 24, 88
 6930 DATA ED, 5B, 87, 24, 19, 19, 7E, FE, 4D
 6940 DATA 18, 28, 10, FE, 19, 28, 0C, FE, 1E
 6950 DATA 1A, 28, 08, FE, 1B, 28, 04, FE, B3
 6960 DATA 01, 20, 37, 22, 69, 24, D5, C5, A1
 6970 DATA 21, A0, 80, CD, AA, BC, C1, D1, E7
 6980 DATA 2A, 6B, 24, 19, 19, 19, 19, F1
 6990 DATA 19, 22, 6B, 24, 3E, 02, 32, 80, 77
 7000 DATA 24, C9, 3E, 03, 32, 79, 24, C9, C7
 7010 DATA 3E, 02, 32, 79, 24, C9, 3E, 01, 6F
 7020 DATA 32, 79, 24, C9, 3E, 00, 32, 79, 4F
 7030 DATA 24, C9, 3E, 01, 32, 80, 24, C9, D9
 7040 DATA 00, 00, 00, 00, 00, 00, 00, 00, B9
 7050 DATA 00, 00, 00, 00, 00, 00, 00, 00, A1
 7060 DATA 00, 00, 00, 00, 00, 00, 00, 00, 91

